

NARWHAL — CHERUBINI



Builder: CHERUBINI

Year Built: 1986

Model: Cruising Sailboat

Price: \$275,000 USD

Location: United States

LOA: 56' (17.07m)

Beam: 13

Max Draft: 5' 2" (1.57m)

Cruise Speed: 7 Knots Kts. (8 MPH)

Our experienced yacht broker, Andrey Shestakov, will help you choose and buy a yacht that best suits your needs **NARWHAL — CHERUBINI** from our catalogue. Presently, at Shestakov Yacht Sales Inc., we have a wide variety of yachts available on our sale's list. We also work in close contact with all the big yacht manufacturers from all over the world.

If you would like to buy a yacht **NARWHAL — CHERUBINI** or would like help answering any questions concerning purchasing, selling or chartering a yacht, please call **+1(954)274-4435**

TABLE OF CONTENTS

TABLE OF CONTENTS	2
SPECIFICATIONS	5
Basic Information	5
Dimensions	5
Speed, Capacities and Weight	5
Accommodations	5
Hull and Deck Information	5
Engine Information	6
PHOTOS	7
Looking Forward into Salon	7
Salon Table	7
Starboard Salon Looking Forward	7
Pilot Berth	7
Starboard Salon Looking Aft	7
Salon Looking Aft	7
Salon Storage Cubby	8
Galley and Pantry	8
Galley Counter Tiles	8
Galley Looking Aft	8
Aft Cabin Berth	9
Aft Cabin Looking Forward	9
Nav Station Outboard	9
Companionway	9
Engine Box	10
Aft Head	10
Aft Head and Stall Shower	10
Forward Head and Cabin	10
Forward Cabin Storage	11

Forward Cabin	11
Bowsprit Looking Aft, Sailing	11
Port Fwd Qtr	11
Bowsprit	12
Stbd Deck, Fwd	12
Cabin House Deck Looking Aft	12
Varnished Cabin Sides	12
Cabin Top, Looking Forward	12
Cabin Top, Looking Aft	12
Port Deck Aft	13
Cockpit Dodger and Bimini	13
Cockpit to Starboard	13
Cockpit, Aft to Helm	13
Helm, Fwd	13
Custom Scrollwork, Aft Stbd Qtr	13
Mainmast Looking Up	14
Aft Port Qtr	14
Starboard Utility, Looking Forward	14
Foredeck at Sunset	14
Tool Storage copy	15
Starboard Utility, Looking Aft	15
Recent Professionally-Installed Electrical Panel Wiring	15
Yanmar Diesel, Front View	15
Yanmar Diesel ,Side View	16
CONTACTS	17
Contact details	17
Telephones	17
Office hours	17
Address	17

SPECIFICATIONS

Basic Information

Category: Cruising Sailboat

Model Year: 1987

Year Built: 1986

Refit Type: New engine, refrigeration, AC and electrical systems

Country: United States

Dimensions

LOA: 56' (17.07mm)

LWL: 44' (13.41mm)

LOD: 48' 9" (14.86mm)

Beam: 13

Max Draft: 5' 2" (1.57mm)

Speed, Capacities and Weight

Cruise Speed: 7 Knots Kts. (8 MPH)

Water Capacity: 160 Gallons

Holding Tank: 80 Gal Gallons

Fuel Capacity: 167 Gal Gallons

Accommodations

Total Cabins: 2

Total Berths: 3

Sleeps: 6

Total Heads: 2

Hull and Deck Information

Hull Material: Fiberglass

Deck Material: Nonskid painted

Hull Color: Aristo Blue

Hull Designer: John E. Cherubini

Engine Information

Engines: 1

Manufacturer: Yanmar

Engine Type: Inboard

Fuel Type: Diesel

PHOTOS

Looking Forward into Salon



Salon Table



Pilot Berth



Starboard Salon Looking Forward



Starboard Salon Looking Aft



Salon Looking Aft



Salon Storage Cubby



Galley and Pantry



Galley Looking Aft



Galley Counter Tiles



Aft Cabin Looking Forward



Aft Cabin Berth



Companionway



Nav Station Outboard



Engine Box



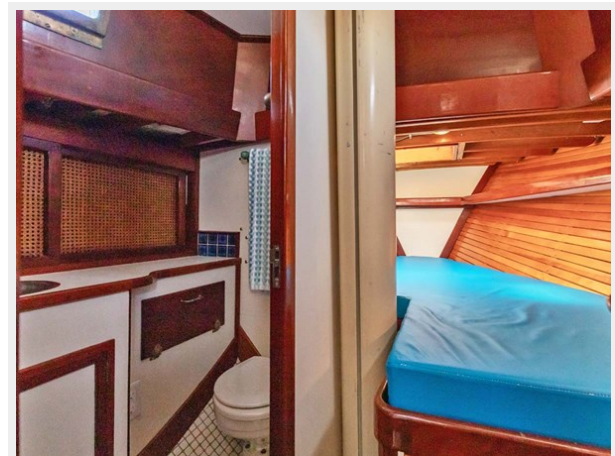
Aft Head



Aft Head and Stall Shower



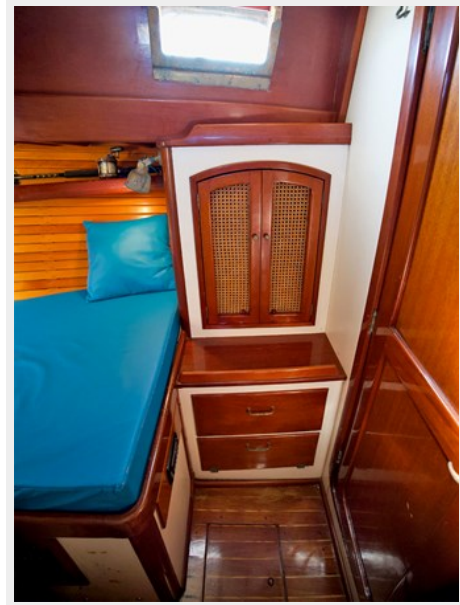
Forward Head and Cabin



Forward Cabin



Forward Cabin Storage



Port Fwd Qtr



Bowsprit Looking Aft, Sailing



Bowsprit



Stbd Deck, Fwd



Cabin House Deck Looking Aft



Varnished Cabin Sides



Cabin Top, Looking Forward



Cabin Top, Looking Aft



Port Deck Aft



Cockpit Dodger and Bimini



Cockpit to Starboard



Cockpit, Aft to Helm



Helm, Fwd



Custom Scrollwork, Aft Stbd Qtr



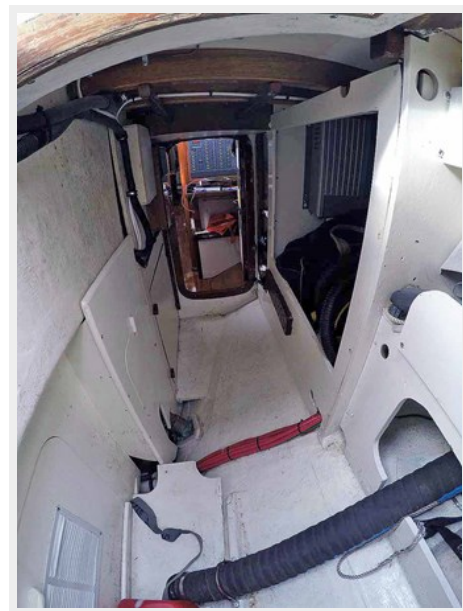
Aft Port Qtr



Mainmast Looking Up



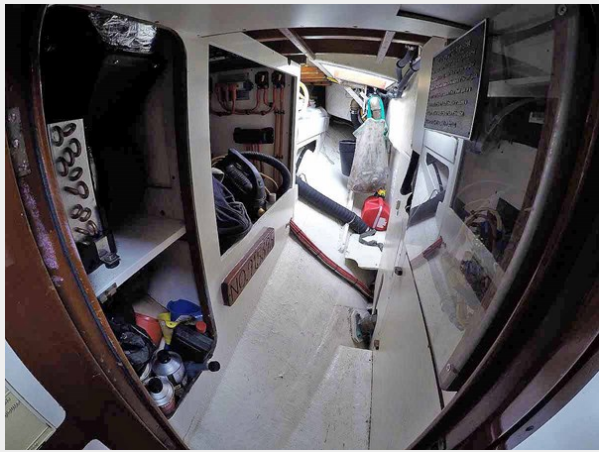
Starboard Utility, Looking Forward



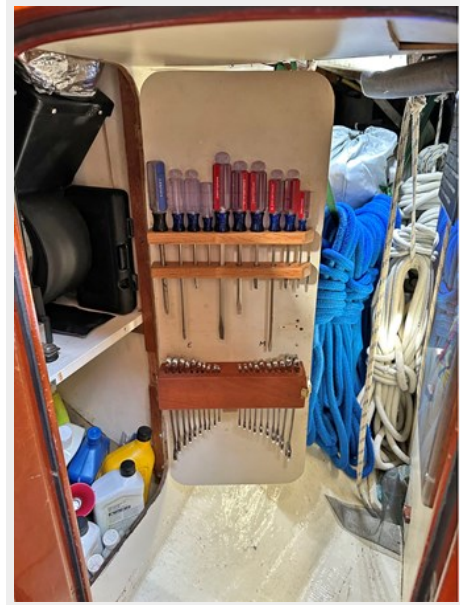
Foredeck at Sunset



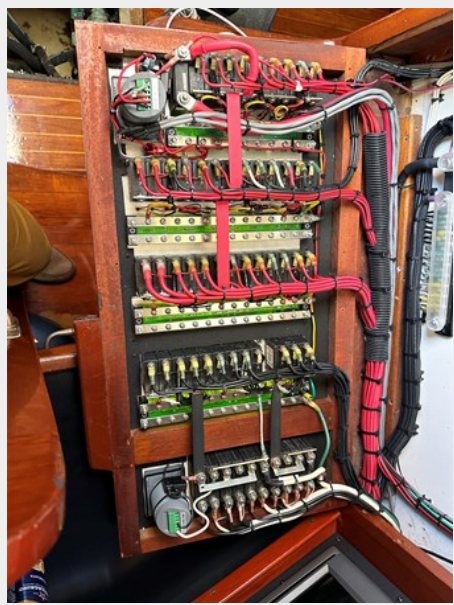
Starboard Utility, Looking Aft



Tool Storage copy



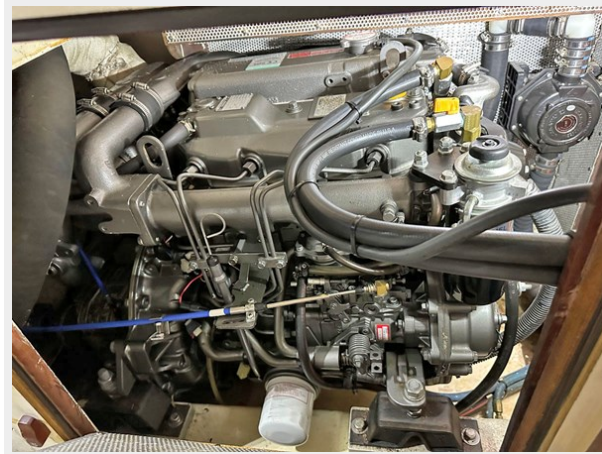
Recent Professionally-Installed Electrical Panel Wiring



Yanmar Diesel, Front View



Yanmar Diesel ,Side View



CONTACTS

Andrey Shestakov, leading yacht broker of the sales department of Shestakov Yacht Sales Inc. Shestakov Yacht Sales Inc., the official representative of the Miami/Fort Lauderdale FL headquarters.

Contact details

Email: andrey@shestakovyachtsales.com

Web: shestakovyachtsales.com/en/

Telephones

USA: +1(954)274-4435

Office hours

Monday – Saturday: **9:00 - 21:00** EDT

Sunday: **closed**

Address



Harbour Towne Marina, 850 NE 3rd St,
STE 213, Dania, FL 33004