

## SQUANDO — SHANNON



**Builder:** SHANNON

**Year Built:** 1999

**Model:** Cruising Sailboat

**Price:** PRICE ON APPLICATION

**LOA:** 43' (13.11mm)

**Beam:** 13

**Min Draft:** 4' 9" (1.45mm)

**Max Draft:** 8' 7" (2.62mm)

Our experienced yacht broker, Andrey Shestakov, will help you choose and buy a yacht that best suits your needs **SQUANDO — SHANNON** from our catalogue. Presently, at Shestakov Yacht Sales Inc., we have a wide variety of yachts available on our sale's list. We also work in close contact with all the big yacht manufacturers from all over the world.

If you would like to buy a yacht **SQUANDO — SHANNON** or would like help answering any questions concerning purchasing, selling or chartering a yacht, please call **+1(954)274-4435**

# TABLE OF CONTENTS

---

TABLE OF CONTENTS	2
SPECIFICATIONS	5
Overview	5
Basic Information	5
Dimensions	5
Speed, Capacities and Weight	5
Accommodations	6
Hull and Deck Information	6
Engine Information	6
PHOTOS	7
Interior from Companionway	7
On Mooring	7
Saloon, Looking Fwd	7
Port Settee	7
Stbd. Settee	8
Saloon Table Extended	8
Looking Aft	8
Galley, Aft	8
Galley	9
Galley	9
Refrigeration and Stove	9
Owner's Cabin, Fwd.	9
Owner's Cabin, Port Side	10
Owner's V-berth with Filler	10
Storage, Fwd. Cabin	10
Owner's Storage, Joinery Detail	10
Fwd. Head	11
Passageway to Aft Cabin	11

Aft Cabin Double	11
Storage, Aft Cabin	11
Aft Head	12
Builder's Plaque	12
Nav Station	12
Raymarine AXIOM at Nav Station	12
Voltage Panel	13
Nav Instruments	13
Autopilot Control	13
VHF	13
Galley Controls	14
Stereo	14
AC Distribution Panel	14
DC Distribution Panel	14
Windlass	15
Foredeck	15
Deck, Fwd.	15
Deck, Looking Aft	15
Self-tacking Staysail/Traveler	16
Dorade	16
Dodger	16
Dodger	16
Stainless Hatches	17
Deck Detail	17
Rod Rigging	17
Cockpit, Fwd	17
New Sailing Instruments	18
Cockpit Sailing Instruments	18
Cockpit	18

---

Cockpit, Aft to Helm	18
Cockpit Table	19
Nav Pod	19
Electric Winch	19
Winch	19
VHF Remote	19
Centerboard Control	19
EPIRB	20
Safety Gear	20
Autopilot Remote	20
Engine	20
Fuel Manifold	21
Engine Hours	21
Genset	21
Generator Hours	21
Alternator	22
Inverter-Charger	22
Prop	22
Rudder	22
On Mooring	23
CONTACTS	24
Contact details	24
Telephones	24
Office hours	24
Address	24

---

# SPECIFICATIONS

---

## Overview

---

The Shannon 43 is a perfect couples' cruising yacht of hand-built pedigree. She features a large saloon and galley, great accommodation for guests, a versatile sail plan, protected cockpit and centerboard shoal-draft accessibility.

SQUANDO features a two-cabin, two-head layout with abundant storage. She is beautifully finished below in a raised-panel cherry interior with teak sole boards. The joinery work, finish and hardware detail are first class.

Well cared for by her owner, SQUANDO has benefited from many recent upgrades including Axiom series Raymarine electronics, "Black" Awlgrip topsides, Westerbeke generator, recent sail inventory and interior upholstery.

## Basic Information

---

**Category:** Cruising Sailboat

**Sub Category:** Cruising Ketch

**Model Year:** 1999

**Year Built:** 1999

## Dimensions

---

**LOA:** 43' (13.11mm)

**LWL:** 30' (9.14mm)

**Beam:** 13

**Min Draft:** 4' 9" (1.45mm)

**Max Draft:** 8' 7" (2.62mm)

## Speed, Capacities and Weight

---

**Water Capacity:** 150 Gallons

**Holding Tank:** 60 Gal Gallons

**Fuel Capacity:** 100 Gal Gallons

---

## Accommodations

---

**Total Cabins:** 2

---

## Hull and Deck Information

---

**Hull Material:** Fiberglass

**Deck Material:** Nonskid painted

**Hull Configuration:** Centerboard

**Hull Color:** Black

**Hull Designer:** Walter Schultz

**Exterior Designer:** Walter Schultz

---

## Engine Information

---

**Engines:** 1

**Manufacturer:** westerbeke

**Engine Type:** Inboard

**Fuel Type:** Diesel

# PHOTOS

**On Mooring**



**Interior from Companionway**



**Saloon, Looking Fwd**



**Port Settee**

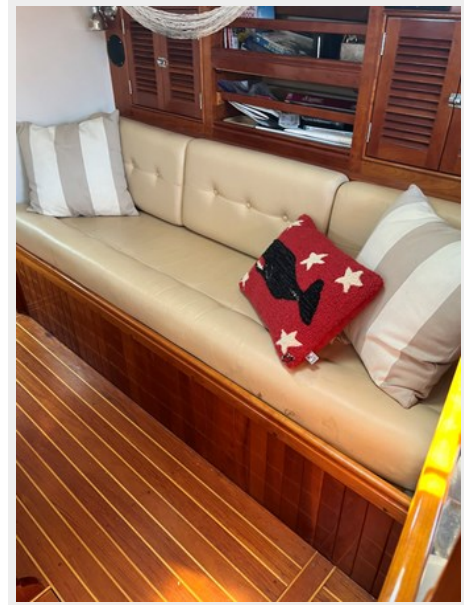




**Saloon Table Extended**



**Stbd. Settee**



**Looking Aft**



**Galley, Aft**





**Galley**



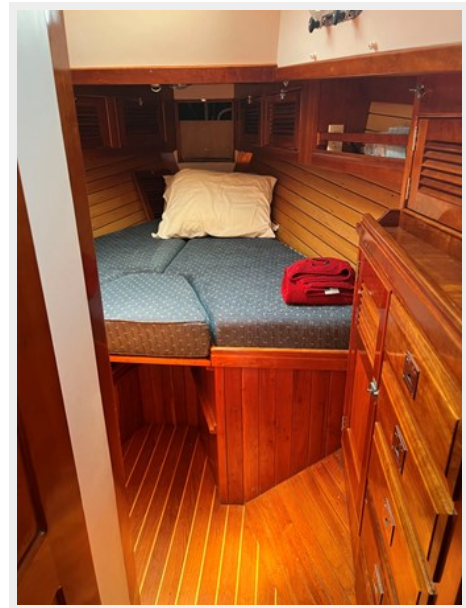
**Galley**



**Refrigeration and Stove**



**Owner's Cabin, Fwd.**



**Owner's V-berth with Filler**



**Owner's Cabin, Port Side**



**Owner's Storage, Joinery Detail**

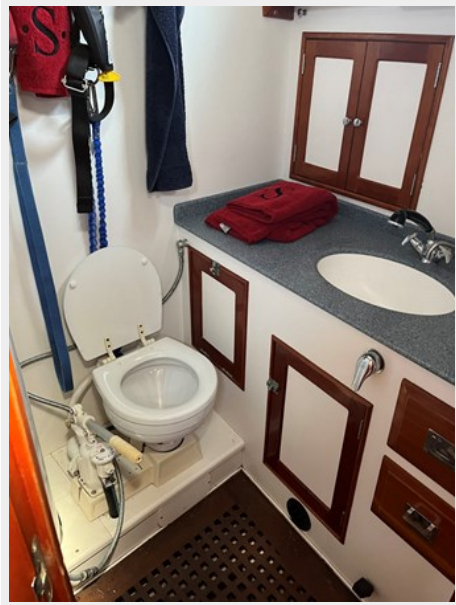


**Storage, Fwd. Cabin**





**Fwd. Head**



**Passageway to Aft Cabin**



**Aft Cabin Double**



**Storage, Aft Cabin**



**Aft Head**



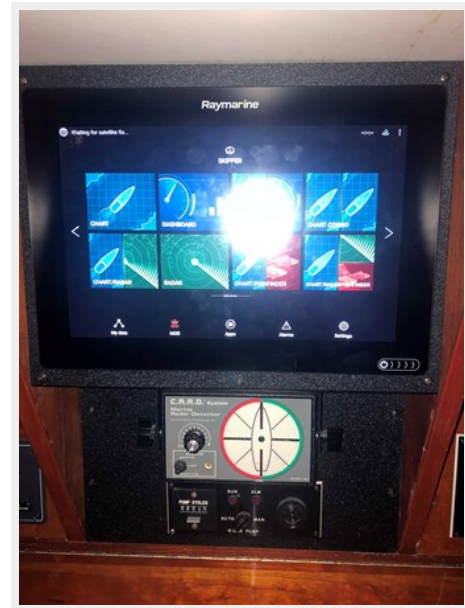
**Builder's Plaque**



**Nav Station**



**Raymarine AXIOM at Nav Station**





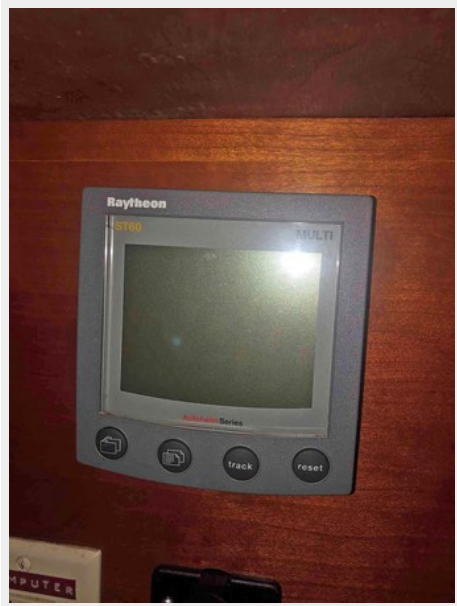
**Voltage Panel**



**Nav Instruments**



**Autopilot Control**



**VHF**



### Galley Controls



### Stereo



### AC Distribution Panel



### DC Distribution Panel





**Windlass**



**Foredeck**



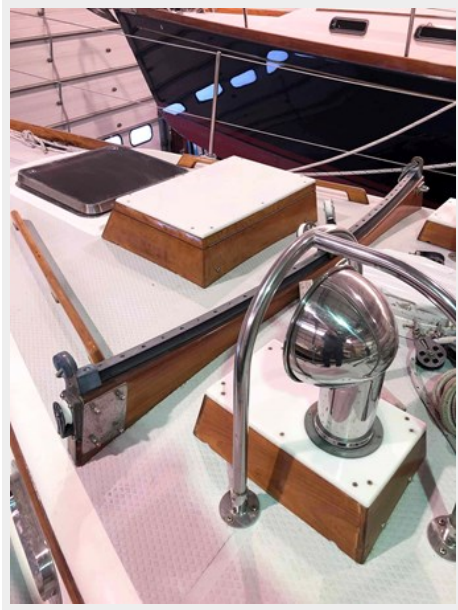
**Deck, Fwd.**



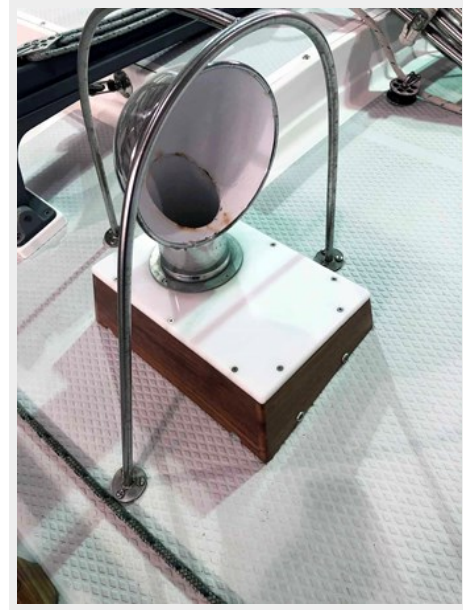
**Deck, Looking Aft**



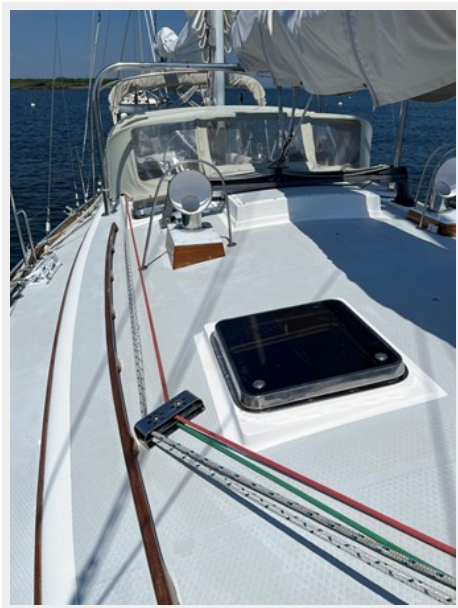
**Self-tacking Staysail/Traveler**



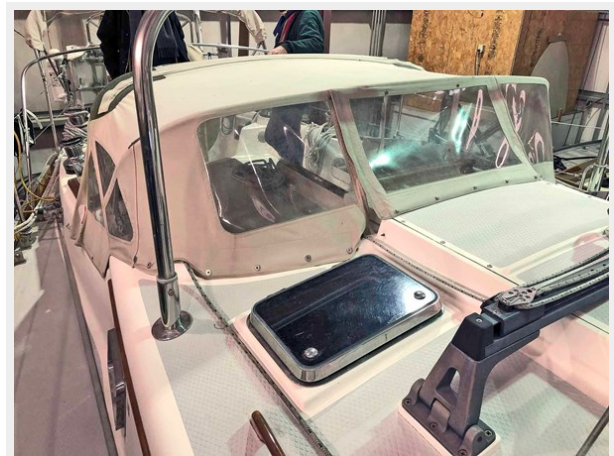
**Dorade**



**Dodger**



**Dodger**

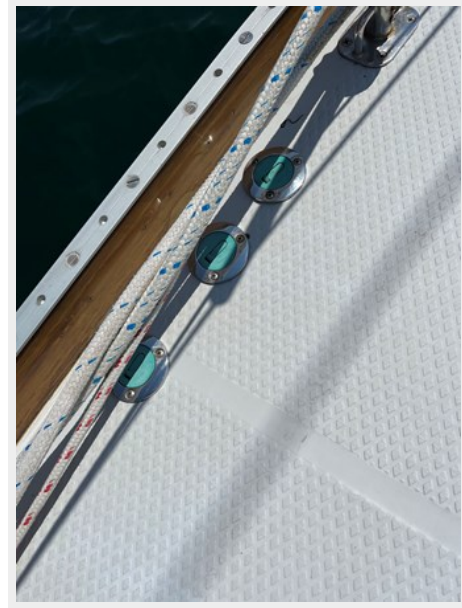




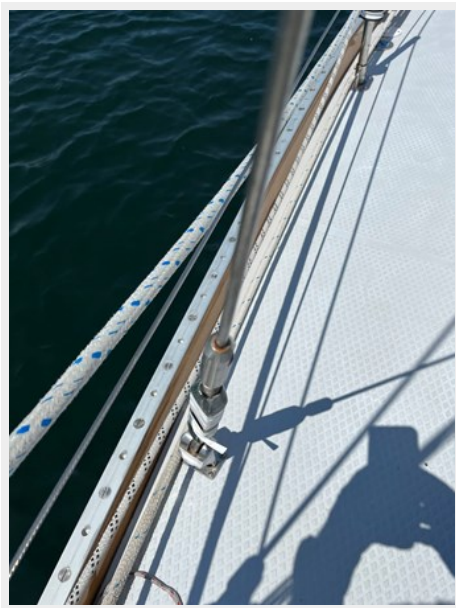
**Stainless Hatches**



**Deck Detail**



**Rod Rigging**



**Cockpit, Fwd**



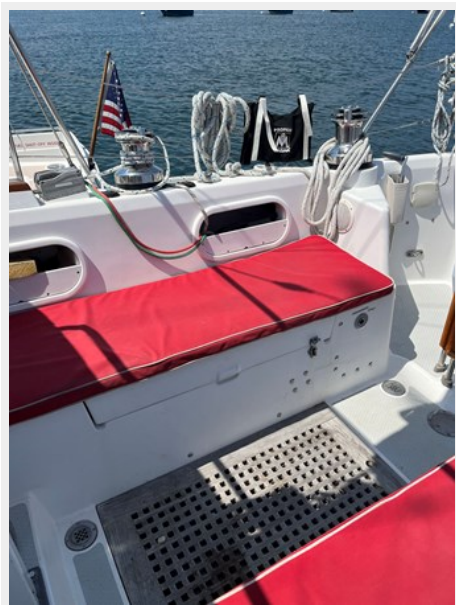
### New Sailing Instruments



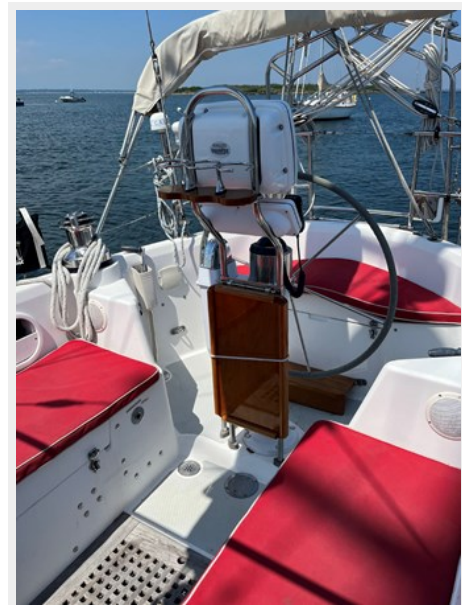
### Cockpit Sailing Instruments



### Cockpit



### Cockpit, Aft to Helm





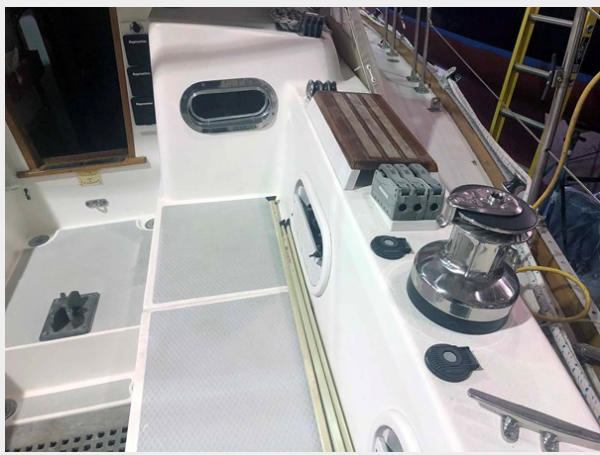
**Cockpit Table**



**Nav Pod**



**Electric Winch**



**Winch**



**Centerboard Control**



**VHF Remote**



**Safety Gear**



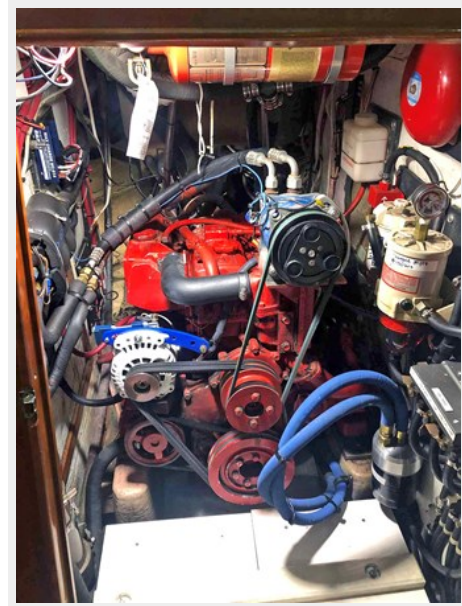
**EPIRB**



**Autopilot Remote**



**Engine**





**Engine Hours**



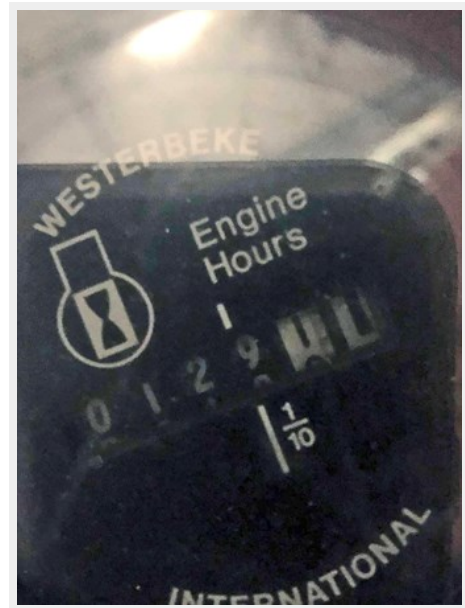
**Fuel Manifold**



**Genset**



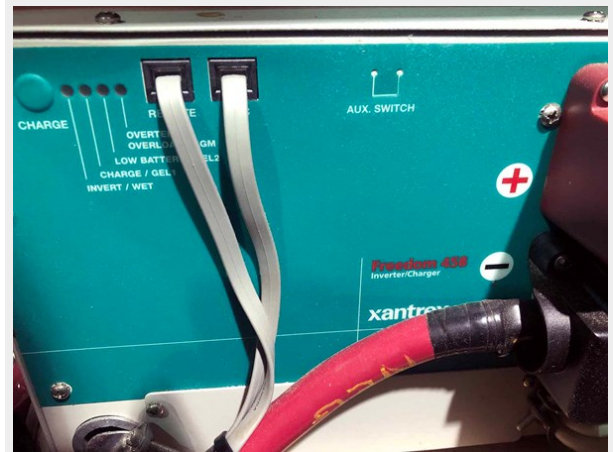
**Generator Hours**



**Alternator**



**Inverter-Charger**



**Prop**



**Rudder**



## On Mooring



# CONTACTS

---

Andrey Shestakov, leading yacht broker of the sales department of Shestakov Yacht Sales Inc. Shestakov Yacht Sales Inc., the official representative of the Miami/Fort Lauderdale FL headquarters.

## Contact details

---

Email: [andrey@shestakovyachtsales.com](mailto:andrey@shestakovyachtsales.com)

Web: [shestakovyachtsales.com/en/](http://shestakovyachtsales.com/en/)

## Telephones

---

USA: +1(954)274-4435

## Office hours

---

Monday – Saturday: **9:00 - 21:00** EDT

Sunday: **closed**

## Address

---



Harbour Towne Marina, 850 NE 3rd St,  
STE 213, Dania, FL 33004