

OHANA — LAZZARA



Builder: LAZZARA

Year Built: 1997

Model: Motor Yacht

Price: PRICE ON APPLICATION

Location: United States

LOA: 76' 11" (23.44mm)

Beam: 19.08

Min Draft: 4' 6" (1.37mm)

Max Draft: 4' 7" (1.4mm)

Cruise Speed: 19 Knots Kts. (22 MPH)

Max Speed: 22 Knots Kts. (25 MPH)

Our experienced yacht broker, Andrey Shestakov, will help you choose and buy a yacht that best suits your needs **OHANA — LAZZARA** from **our catalogue**. Presently, at **Shestakov Yacht Sales Inc.**, we have a wide variety of yachts available on **our sale's list**. We also work in close contact with all the big **yacht manufacturers** from all over the world.

If you would like to buy a yacht **OHANA — LAZZARA** or would like help answering any questions concerning purchasing, selling or chartering a yacht, please call **+1(954)274-4435**

TABLE OF CONTENTS

TABLE OF CONTENTS	2
SPECIFICATIONS	6
Basic Information	6
Dimensions	6
Speed, Capacities and Weight	6
Accommodations	6
Hull and Deck Information	6
Engine Information	7
PHOTOS	8
Salon Looking Forward	8
Salon to Port	8
Salon to Starboard	8
Salon Bar Unit	8
Salon Wet Bar	8
Salon Dining	8
Dining Table	9
Salon Aft to Starboard	9
Salon Aft to Port	9
Day Head	9
Galley Area	9
Galley to Port	9
Galley Looking Aft	10
Galley	10
Dinette	10
Entrance to Crew	10
Skylounge Steps in Galley	10
Salon Steps to Accommodations	10
Lower Foyer	11

Lower Foyer Art Niche	11
Master to Starboard	11
Master to Starboard	11
Master Hanging Locker	11
Master Hanging Locker	11
Master Head	12
Master Shower	12
Starboard Cabin Head	12
Starboard Guest Cabin	12
Port Cabin Looking Forward	12
Port Cabin Head	12
Port Cabin	13
Crew Area	13
Crew Area	13
Crew Area	13
Crew Area	13
Crew Head	13
Crew	14
Crew Head	14
Capt Cabin	14
Capt Cabin	14
Capt Head	14
Helm	14
Helm	15
Portside Helm	15
New Garmin	15
Helm Centerline	15
Isis Monitor	15
Starboard Side Desk	15

Skylounge Looking Forward	16
Portside Convertible Settee	16
Skylounge	16
Skylounge	16
Boat Deck Grill	16
Boat Deck Seating	16
View from Boat Deck	17
Coach Roof Equipment	17
Swim Platform	17
Bow	17
Windlass Detail	17
Side Deck to Galley	17
Aft Deck	18
Aft Deck to Starboard	18
Aft Deck to Port	18
Aft Deck Bar	18
Engine Room Looking Forward	18
Starboard Engine	18
Port Engine	19
Port Generator	19
Starboard Generator	19
Alternate Profile	19
Alternate Profile	19
Alternate Profile	19
Alternate Profile	20
Alternate Profile	20
Alternate Profile	20
Alternate Profile	20
Alternate Profile	20
Alternate Profile	20

Alternate Profile	20
Alternate Profile	21
Alternate Profile	21
CONTACTS	22
Contact details	22
Telephones	22
Office hours	22
Address	22

SPECIFICATIONS

Basic Information

Category: Motor Yacht

Model Year: 1998

Year Built: 1997

Country: United States

Dimensions

LOA: 76' 11" (23.44mm)

Beam: 19.08

Min Draft: 4' 6" (1.37mm)

Max Draft: 4' 7" (1.4mm)

Speed, Capacities and Weight

Cruise Speed: 19 Knots Kts. (22 MPH) **Max Speed:** 22 Knots Kts. (25 MPH)

Gross Tonnage: 50 Pounds

Water Capacity: 350 Gallons

Holding Tank: 100 Gal Gallons

Fuel Capacity: 1750 Gal Gallons

Accommodations

Total Cabins: 3

Sleeps: 6

Total Heads: 4

Crew Cabin: 4

Crew Berths: 3

Crew Heads: 2

Hull and Deck Information

Hull Material: Fiberglass

Deck Material: Teak

Hull Configuration: Modified V-Hull

Hull Designer: Lazzara Yachts

Exterior Designer: Lazzara Yachts

Interior Designer: Lazzara Yachts

Engine Information

Engines: 2

Manufacturer: MTU

Engine Type: Inboard

Fuel Type: Diesel

PHOTOS

Salon Looking Forward



Salon to Port



Salon to Starboard



Salon Bar Unit



Salon Wet Bar



Salon Dining



Dining Table



Salon Aft to Starboard



Salon Aft to Port



Day Head



Galley Area



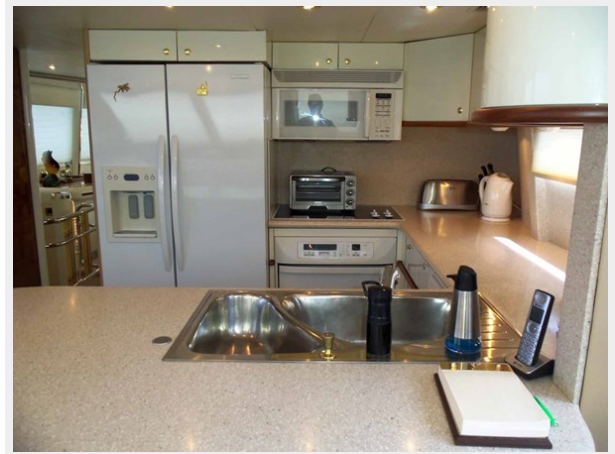
Galley to Port



Galley Looking Aft



Galley



Dinette



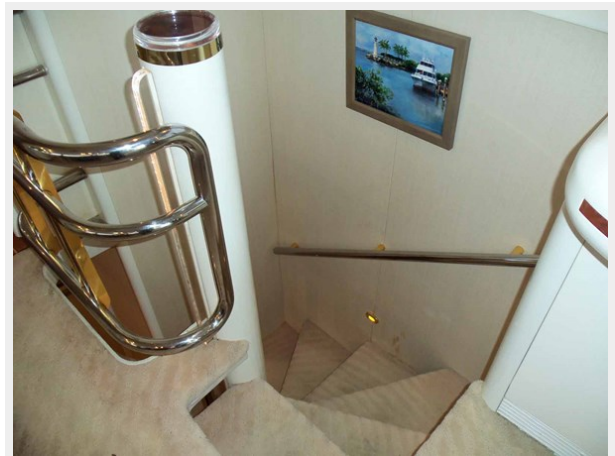
Entrance to Crew



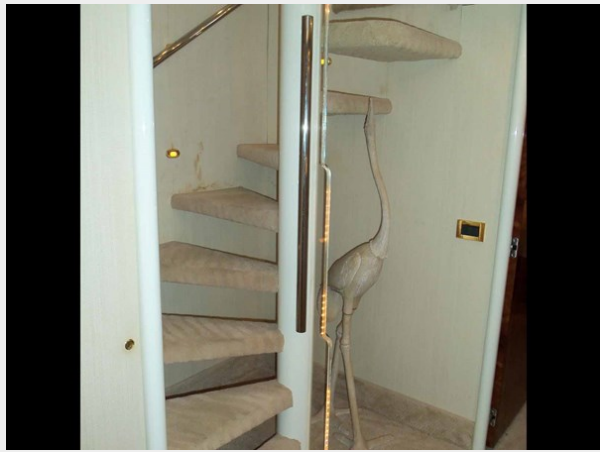
Skylounge Steps in Galley



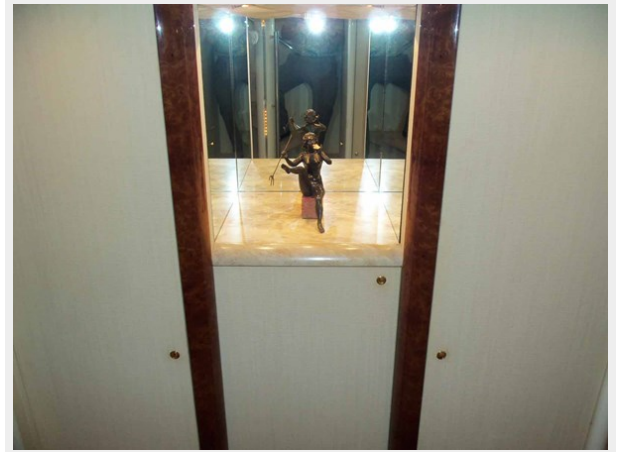
Salon Steps to Accommodations



Lower Foyer



Lower Foyer Art Niche



Master to Starboard



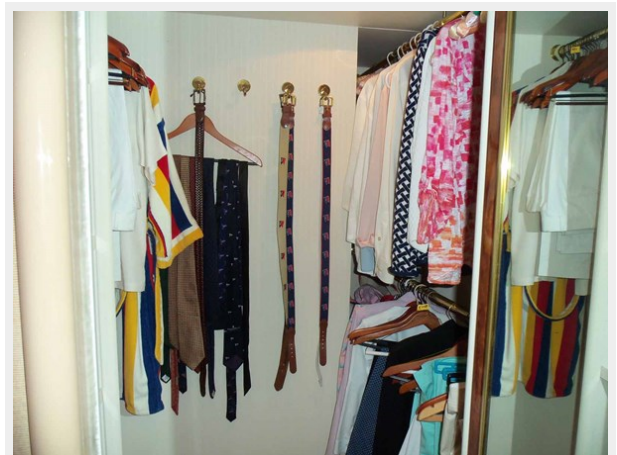
Master to Starboard



Master Hanging Locker



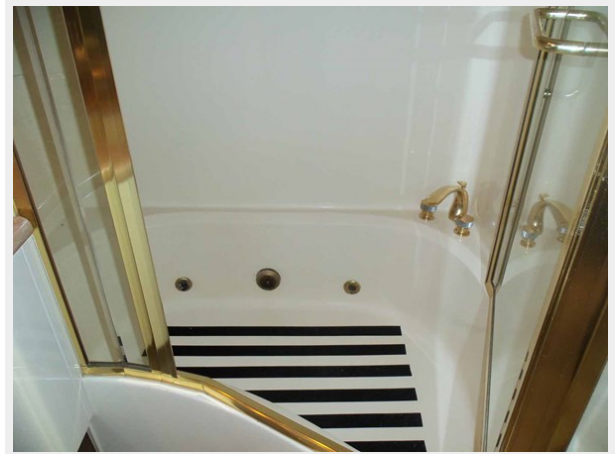
Master Hanging Locker



Master Head



Master Shower



Starboard Cabin Head



Starboard Guest Cabin



Port Cabin Looking Forward



Port Cabin Head



Port Cabin



Crew Area



Crew Area



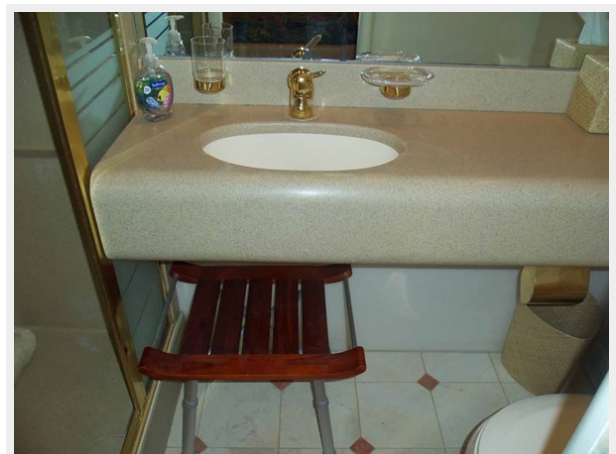
Crew Area



Crew Area



Crew Head



Crew



Crew Head



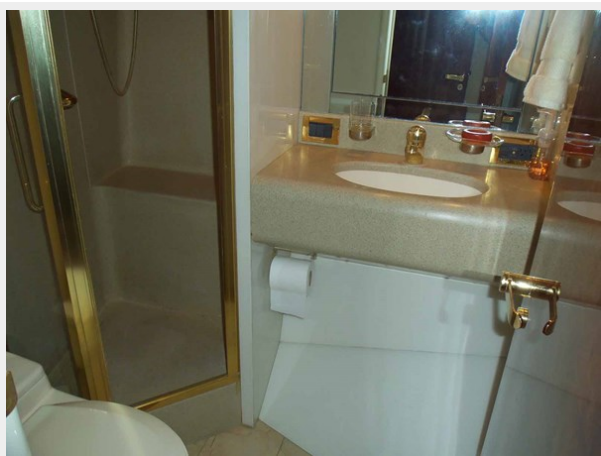
Capt Cabin



Capt Cabin



Capt Head



Helm



Helm



Portside Helm



New Garmin



Helm Centerline



Isis Monitor



Starboard Side Desk



Skylounge Looking Forward



Portside Convertible Settee



Skylounge



Skylounge



Boat Deck Grill



Boat Deck Seating



View from Boat Deck



Coach Roof Equipment



Swim Platform



Bow



Windlass Detail



Side Deck to Galley



Aft Deck



Aft Deck to Starboard



Aft Deck to Port



Aft Deck Bar



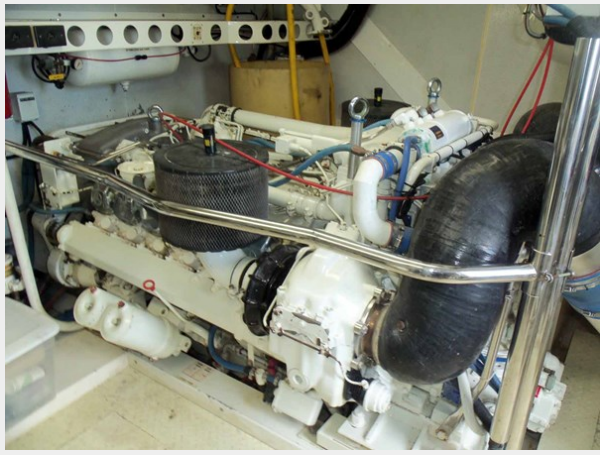
Engine Room Looking Forward



Starboard Engine



Port Engine



Port Generator



Starboard Generator



Alternate Profile



Alternate Profile



Alternate Profile



Alternate Profile



Alternate Profile



Alternate Profile



Alternate Profile



Alternate Profile



Alternate Profile



Alternate Profile



Alternate Profile



CONTACTS

Andrey Shestakov, leading yacht broker of the sales department of Shestakov Yacht Sales Inc. Shestakov Yacht Sales Inc., the official representative of the Miami/Fort Lauderdale FL headquarters.

Contact details

Email: **andrey@shestakovyachtsales.com**

Web: shestakovyachtsales.com/en/

Telephones

USA: **+1(954)274-4435**

Office hours

Monday – Saturday: **9:00 - 21:00** EDT

Sunday: **closed**

Address



Harbour Towne Marina, 850 NE 3rd St, STE 213, Dania, FL 33004