

ALEGRIA — BENETTI



Builder: BENETTI

Year Built: 2010

Model: Motor Yacht

Price: PRICE ON APPLICATION

LOA: 143' 1" (43.6mm)

Beam: 30.38

Min Draft: 8' 8" (2.63mm)

Max Draft: 9' 1" (2.76mm)

Cruise Speed: 12 Knots Kts. (14 MPH)

Max Speed: 15 Knots Kts. (17 MPH)

Our experienced yacht broker, Andrey Shestakov, will help you choose and buy a yacht that best suits your needs **ALEGRIA — BENETTI** from our catalogue. Presently, at **Shestakov Yacht Sales Inc.**, we have a wide variety of yachts available on our sale's list. We also work in close contact with all the big yacht manufacturers from all over the world.

If you would like to buy a yacht **ALEGRIA — BENETTI** or would like help answering any questions concerning purchasing, selling or chartering a yacht, please call **+1(954)274-4435**

TABLE OF CONTENTS

TABLE OF CONTENTS	2
SPECIFICATIONS	4
Overview	4
Basic Information	4
Dimensions	4
Speed, Capacities and Weight	5
Accommodations	5
Hull and Deck Information	5
Engine Information	5
PHOTOS	6
Owner Stateroom 11_14_20_0097 (1)	6
11_15_20_0740 (1)	6
11_14_20_0083 (1)	6
Main Salon 11_14_20_0009 (2)	6
Main Salon Bar 11_14_20_0016 (1)	6
VIP Port VIP Port11_14_20_0207	6
11_14_20_0259 (1)	7
VIP Starboard 11_14_20_0238 (2)	7
VIP Bath11_14_20_0255 (1)	7
Twin Starboard 11_14_20_0165 (2)	7
Sundeck Fwd Lounge 11_15_20_0490 (1)	7
Sundeck Dining Table 11_15_20_0368	7
Main Dining Bridge Deck 11_14_20_0307 (1)	8
Main Dining Bridge Deck 11_15_20_0868 (1)	8
Sun Deck Jetted Pool 11_15_20_0619	8
Aft Main Deck Dining 11_15_20_1048 (1)	8
Sky Lounge Game Table 11_15_20_V_0064-2	8
Sky Lounge Bar 11_15_20_V_0074-3	8

2016 Boston Whaler Tender 11_15_20_0764	9
Bridge 11_15_20_V_0078-2	9
Port side-aft profile 11_15_20_0058	9
CONTACTS	10
Contact details	10
Telephones	10
Office hours	10
Address	10

SPECIFICATIONS

Overview

Exquisite Benetti 145 Vision with gorgeous traditional interior. ALEGRIA will be the next Benetti Vision to sell. Big volume 43 meter full displacement motor yacht. Zero Speed Stabilizers. All systems have been continually serviced and maintained. Expansive Sundeck. Spacious Owner Suite with 180 degree view forward on the main deck. Separate His & Her Owner bathrooms with heated floors. Owner Office. Private Owner outdoor lounge area with table and separate private sunbed. Three Bars; 1 Main Deck, 1 Sky Lounge, 1 Sun Deck. Main Dining on Sky Deck Aft with glass doors that open 270 degrees. Outdoor dining on the Sun Deck and Main Deck Aft. Four Guest Staterooms for up to 10 guests and all guest bathrooms have heated floors. Garage to keep all the water toys. Wave Runners, Scuba Gear, Bicycles, Clear Acrylic Kayak. (Boston Whaler 28 Outrage T/T available but not included in the asking price.) Numerous interior and exterior areas for relaxing, entertaining and dining. Huge Jacuzzi Spa Tub for 8 - 10 people on the Sun Deck. Crew accommodations for 11 - 12. Only two owners have owned ALEGRIA and she deserves your consideration if you want a well appointed trans-Atlantic large volume pedigree motor yacht.

Basic Information

Category: Motor Yacht

Sub Category: Mega Yacht

Model Year: 2010

Year Built: 2010

Dimensions

LOA: 143' 1" (43.6mm)

Beam: 30.38

Min Draft: 8' 8" (2.63mm)

Max Draft: 9' 1" (2.76mm)

Speed, Capacities and Weight

Cruise Speed: 12 Knots Kts. (14 MPH)	Cruise Speed Range: 3000
Max Speed: 15 Knots Kts. (17 MPH)	Max Speed Range: 2500 Kts.
Gross Tonnage: 456 Pounds	Water Capacity: 9400 Gallons
Holding Tank: 779.31 Gal Gallons	Fuel Capacity: 15414.44 Gal Gallons

Accommodations

Total Cabins: 5	Total Berths: 9
Sleeps: 12	Total Heads: 7
Crew Cabin: 9	Crew Berths: 8
Crew Heads: 5	

Hull and Deck Information

Hull Material: GRP	Deck Material: Teak over Fiberglass
Hull Configuration: Full Displacement	Hull Color: White
Hull Designer: Benetti	Exterior Designer: Stefano Righini
Interior Designer: Francois Zuretti	

Engine Information

Engines: 2	Manufacturer: Caterpillar
Engine Type: Inboard	Fuel Type: Diesel

PHOTOS

Owner Stateroom 11_14_20_0097 (1)



11_15_20_0740 (1)



11_14_20_0083 (1)



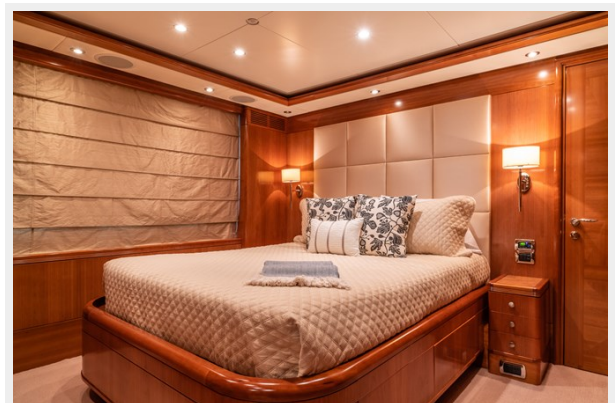
Main Salon 11_14_20_0009 (2)



Main Salon Bar 11_14_20_0016 (1)



VIP Port VIP Port11_14_20_0207



11_14_20_0259 (1)



VIP Starboard 11_14_20_0238 (2)



VIP Bath 11_14_20_0255 (1)



Twin Starboard 11_14_20_0165 (2)



Sundeck Fwd Lounge 11_15_20_0490 (1)



Sundeck Dining Table 11_15_20_0368



**Main Dining Bridge Deck
11_14_20_0307 (1)**



**Main Dining Bridge Deck
11_15_20_0868 (1)**



Sun Deck Jetted Pool 11_15_20_0619

**Aft Main Deck Dining 11_15_20_1048
(1)**



**Sky Lounge Game Table
11_15_20_V_0064-2**



Sky Lounge Bar 11_15_20_V_0074-3



Bridge 11_15_20_V_0078-2



**2016 Boston Whaler Tender
11_15_20_0764**



Port side-aft profile 11_15_20_0058



CONTACTS

Andrey Shestakov, leading yacht broker of the sales department of Shestakov Yacht Sales Inc. Shestakov Yacht Sales Inc., the official representative of the Miami/Fort Lauderdale FL headquarters.

Contact details

Email: **andrey@shestakovyachtsales.com**

Web: shestakovyachtsales.com/en/

Telephones

USA: **+1(954)274-4435**

Office hours

Monday – Saturday: **9:00 - 21:00** EDT

Sunday: **closed**

Address



Harbour Towne Marina, 850 NE 3rd St, STE 213, Dania, FL 33004