

SHORT SEASON — SILVERTON



Builder: SILVERTON

Year Built: 1987

Model: cruiser

Price: PRICE ON APPLICATION

Location: United States

LOA: 40' (12.19mm)

Beam: 14

Max Draft: 3' 8" (1.12mm)

Cruise Speed: 17.38 Knots Kts. (20 MPH)

Max Speed: 22.59 Knots Kts. (26 MPH)

Our experienced yacht broker, Andrey Shestakov, will help you choose and buy a yacht that best suits your needs **Short Season — SILVERTON** from our catalogue. Presently, at Shestakov Yacht Sales Inc., we have a wide variety of yachts available on our sale's list. We also work in close contact with all the big yacht manufacturers from all over the world.

If you would like to buy a yacht **Short Season — SILVERTON** or would like help answering any questions concerning purchasing, selling or chartering a yacht, please call **+1(954)274-4435**

TABLE OF CONTENTS

TABLE OF CONTENTS	2
SPECIFICATIONS	4
Overview	4
Basic Information	4
Dimensions	4
Speed, Capacities and Weight	4
Accommodations	4
Hull and Deck Information	5
Engine Information	5
PHOTOS	6
IMG_0226	6
IMG_0230	6
IMG_4857	6
IMG_4859	6
Main Salon	6
Main Salon	6
Main Salon	7
Main Salon	7
Main Salon	7
Galley Down Starboard	7
Galley down	7
Galley Down Port Side	7
Front Cabin	8
Aft Cabin	8
CONTACTS	9
Contact details	9
Telephones	9
Office hours	9

Address

9

SPECIFICATIONS

Overview

Double Hard tops give plenty of shade, interior is very roomy, and galley has new fridge.

Basic Information

Category: cruiser

Sub Category: Double Cabin

Model Year: 1987

Year Built: 1987

Country: United States

Dimensions

LOA: 40' (12.19mm)

Beam: 14

Max Draft: 3' 8" (1.12mm)

Speed, Capacities and Weight

Cruise Speed: 17.38 Knots Kts. (20 MPH)

Max Speed: 22.59 Knots Kts. (26 MPH)

Water Capacity: 100 Gallons

Holding Tank: 35 Gal Gallons

Fuel Capacity: 300 Gal Gallons

Accommodations

Total Cabins: 2

Total Berths: 2

Sleeps: 6

Total Heads: 2

Hull and Deck Information

Hull Material: Fiberglass

Hull Configuration: Full
Displacement/Planing Hull

Hull Color: White

Engine Information

Engines: 2

Manufacturer: Crusader

Engine Type: Inboard

Fuel Type: Gas/Petrol

PHOTOS

IMG_0226



IMG_0230



IMG_4857



IMG_4859



Main Salon



Main Salon



Main Salon



Main Salon



Main Salon



Galley Down Starboard



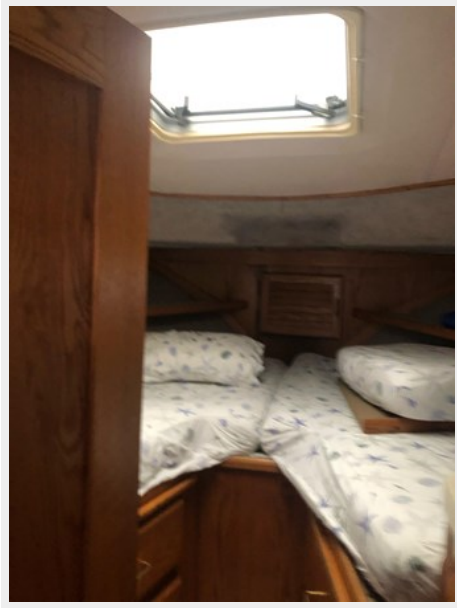
Galley down



Galley Down Port Side



Front Cabin



Aft Cabin



CONTACTS

Andrey Shestakov, leading yacht broker of the sales department of Shestakov Yacht Sales Inc. Shestakov Yacht Sales Inc., the official representative of the Miami/Fort Lauderdale FL headquarters.

Contact details

Email: andrey@shestakovyachtsales.com

Web: shestakovyachtsales.com/en/

Telephones

USA: +1(954)274-4435

Office hours

Monday – Saturday: **9:00 - 21:00** EDT

Sunday: **closed**

Address



Harbour Towne Marina, 850 NE 3rd St,
STE 213, Dania, FL 33004