

SUNSEEKER 115 SPORT — SUNSEEKER



Builder: SUNSEEKER

Year Built: 2011

Model: Motor Yacht

Price: PRICE ON APPLICATION

LOA: 113' 3" (34.5mm)

Beam: 24.24

Max Draft: 8' 2" (2.48mm)

Cruise Speed: 20 Knots Kts. (23 MPH)

Max Speed: 25 Knots Kts. (29 MPH)

Our experienced yacht broker, Andrey Shestakov, will help you choose and buy a yacht that best suits your needs **Sunseeker 115 Sport — SUNSEEKER** from **our catalogue**. Presently, at **Shestakov Yacht Sales Inc.**, we have a wide variety of yachts available on **our sale's list**. We also work in close contact with all the big **yacht manufacturers** from all over the world.

If you would like to buy a yacht **Sunseeker 115 Sport — SUNSEEKER** or would like help answering any questions concerning purchasing, selling or chartering a yacht, please call **+1(954)274-4435**

TABLE OF CONTENTS

TABLE OF CONTENTS	2
SPECIFICATIONS	4
Basic Information	4
Dimensions	4
Speed, Capacities and Weight	4
Accommodations	4
Hull and Deck Information	4
Engine Information	5
PHOTOS	6
Main Saloon	6
Port Side Sofa	6
Stbd Sofa	6
Dining	6
Dining	6
Master Suit	7
Master Ensuite	7
Master Head	7
Master Ensuite	7
Master Shower	7
Main Deck Day Head	8
Main Deck Day Head	8
Foyer to Saloon	8
Wheelhouse down to MD Foyer	8
Wheelhouse	9
Wheelhouse to Flybridge	9
Flybridge	9
Flybridge	9
Flybridge Bar	9

Flybridge Jacuzzi	9
IMG_2066	10
IMG_2072	10
Main Deck Aft	11
Main Deck Aft Bar	11
Aft Swim Platform	11
Tender Garage	11
Stairs down to lower deck	12
Guest Suite	12
VIP Suite Stbd	12
VIP Suite Port	12
Guest Ensuite	12
Galley	12
IMG_2029	13
Pantry	13
Main Engine Stbd	13
Main Engine Port	13
ECR with Air Con	14
CONTACTS	15
Contact details	15
Telephones	15
Office hours	15
Address	15

SPECIFICATIONS

Basic Information

Category: Motor Yacht

Sub Category: Flybridge

Model Year: 2011

Year Built: 2011

Dimensions

LOA: 113' 3" (34.5mm)

Beam: 24.24

Max Draft: 8' 2" (2.48mm)

Speed, Capacities and Weight

Cruise Speed: 20 Knots Kts. (23 MPH) **Cruise Speed Range:** 1200

Max Speed: 25 Knots Kts. (29 MPH) **Gross Tonnage:** 236 Pounds

Water Capacity: 3900 Gallons **Holding Tank:** 330.22 Gal Gallons

Fuel Capacity: 3698.41 Gal Gallons

Accommodations

Total Cabins: 5

Total Heads: 6

Hull and Deck Information

Hull Material: GRP

Engine Information

Engines: 2

Manufacturer: MTU

Engine Type: Inboard

Fuel Type: Diesel

PHOTOS

Main Saloon



Port Side Sofa



Stbd Sofa

Dining



Dining



Master Suit



Master Ensuite



Master Head



Master Ensuite



Master Shower



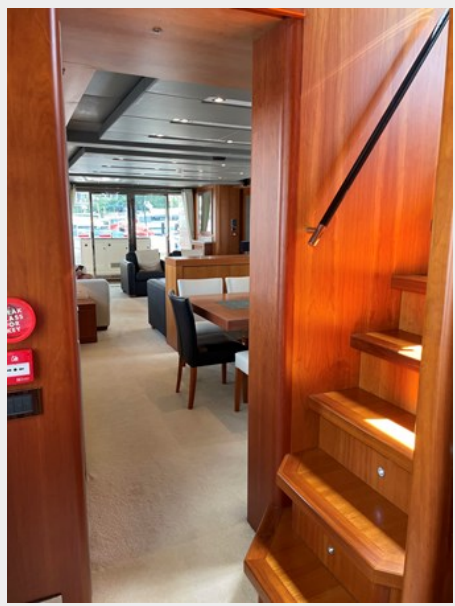
Main Deck Day Head



Main Deck Day Head



Foyer to Saloon



Wheelhouse down to MD Foyer



Wheelhouse



Wheelhouse to Flybridge



Flybridge



Flybridge



Flybridge Bar



Flybridge Jacuzzi



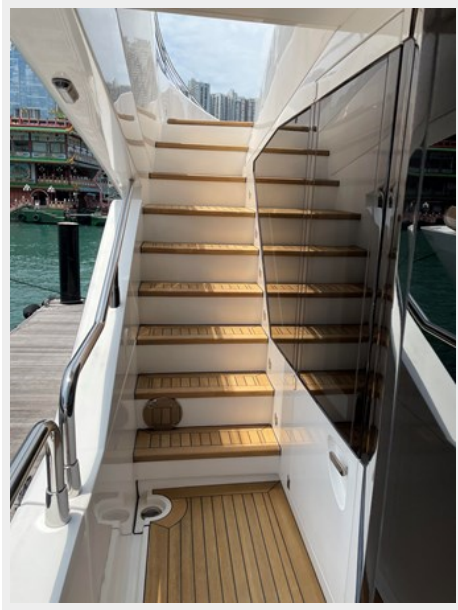


IMG_2066

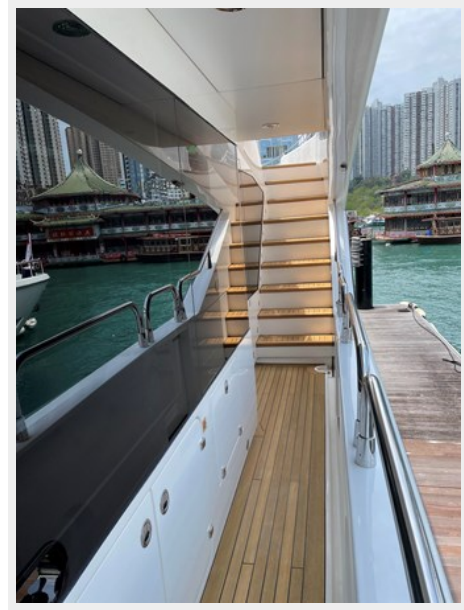


IMG_2072





Main Deck Aft



Main Deck Aft Bar



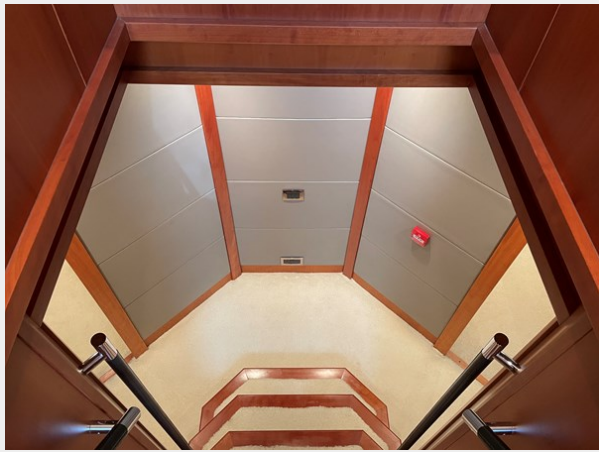
Aft Swim Platform



Tender Garage



Stairs down to lower deck



Guest Suite



VIP Suite Stbd



VIP Suite Port



Guest Ensuite



Galley





IMG_2029



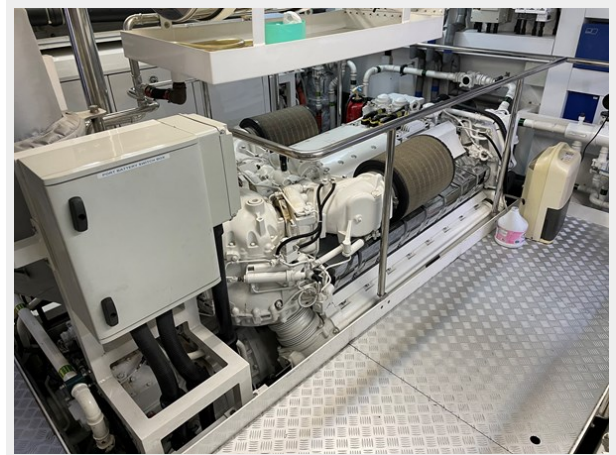
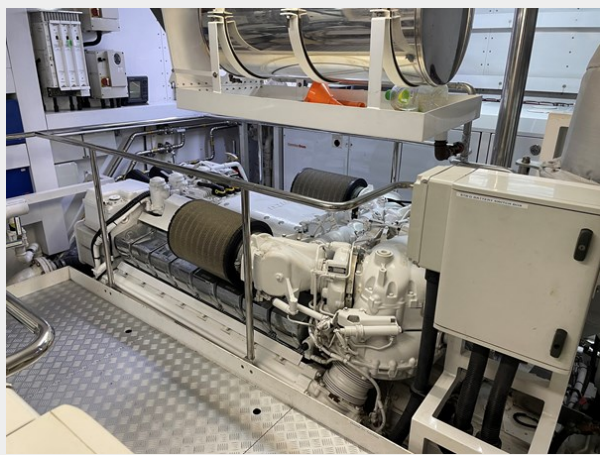
Pantry

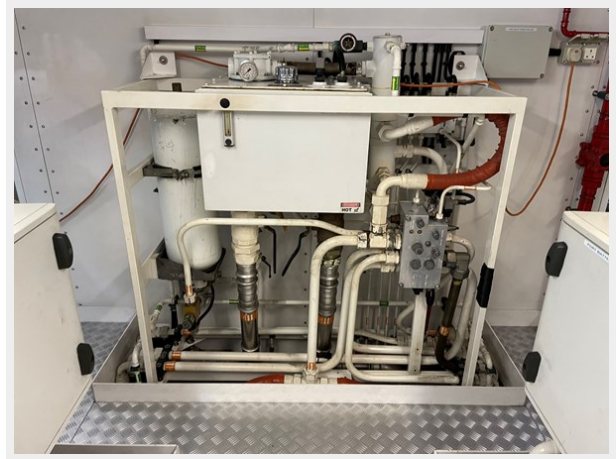


Main Engine Stbd

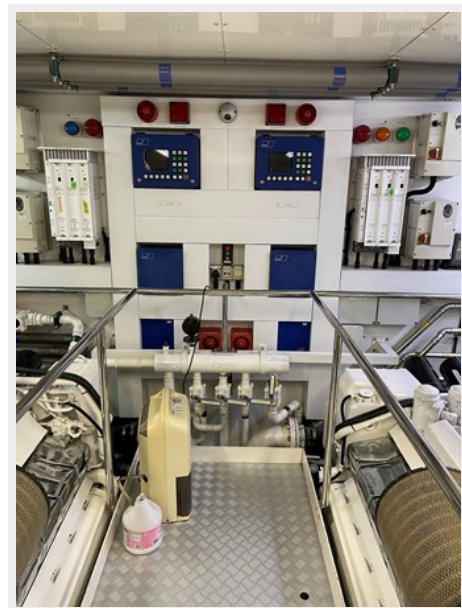


Main Engine Port





ECR with Air Con



CONTACTS

Andrey Shestakov, leading yacht broker of the sales department of Shestakov Yacht Sales Inc. Shestakov Yacht Sales Inc., the official representative of the Miami/Fort Lauderdale FL headquarters.

Contact details

Email: **andrey@shestakovyachtsales.com**

Web: shestakovyachtsales.com/en/

Telephones

USA: **+1(954)274-4435**

Office hours

Monday – Saturday: **9:00 - 21:00** EDT

Sunday: **closed**

Address



Harbour Towne Marina, 850 NE 3rd St, STE 213, Dania, FL 33004