

WILLOW — MOONEN



Builder: MOONEN

Year Built: 2006

Model: Motor Yacht

Price: PRICE ON APPLICATION

Location: New Zealand

LOA: 89' 3" (27.2mm)

Beam: 22.01

Min Draft: 5' 11" (1.8mm)

Max Draft: 5' 11" (1.8mm)

Cruise Speed: 11 Knots Kts. (13 MPH)

Max Speed: 13 Knots Kts. (15 MPH)

Our experienced yacht broker, Andrey Shestakov, will help you choose and buy a yacht that best suits your needs **Willow — MOONEN** from our catalogue. Presently, at Shestakov Yacht Sales Inc., we have a wide variety of yachts available on our sale's list. We also work in close contact with all the big yacht manufacturers from all over the world.

If you would like to buy a yacht **Willow — MOONEN** or would like help answering any questions concerning purchasing, selling or chartering a yacht, please call **+1(954)274-4435**

TABLE OF CONTENTS

TABLE OF CONTENTS	2
SPECIFICATIONS	4
Overview	4
Basic Information	4
Dimensions	4
Speed, Capacities and Weight	4
Accommodations	5
Hull and Deck Information	5
Engine Information	5
PHOTOS	6
Dining	6
Saloon	6
Saloon port side	6
Saloon	6
Master cabin	6
Master cabin	6
Master head	7
VIP cabin	7
Triple berth cabin	7
Twin & double	7
Wheelhouse	7
Galley	7
Flybridge	8
Aft deck	8
Flybridge aft	8
Stern extension	8
CONTACTS	9
Contact details	9

Telephones	9
Office hours	9
Address	9

SPECIFICATIONS

Overview

Willow comfortably sleeps up to 8/10 guests in 4 spacious en suite staterooms, including a master suite, a double VIP stateroom and a twin stateroom with an extra bunk bed to port plus a double stateroom with a bunk bed to starboard.

Large refit in 2017 followed up by superstructure paint job and minor refit in 2019 after arrival in New Zealand.

Basic Information

Category: Motor Yacht

Sub Category: Displacement

Model Year: 2006

Year Built: 2006

Country: New Zealand

Dimensions

LOA: 89' 3" (27.2mm)

Beam: 22.01

Min Draft: 5' 11" (1.8mm)

Max Draft: 5' 11" (1.8mm)

Speed, Capacities and Weight

Cruise Speed: 11 Knots Kts. (13 MPH)

Cruise Speed Range: 2600

Max Speed: 13 Knots Kts. (15 MPH)

Gross Tonnage: 116 Pounds

Water Capacity: 3100 Gallons

Holding Tank: 105.67 Gal Gallons

Fuel Capacity: 4755.1 Gal Gallons

Fuel Consumption: 17.17 Gal Gallons

Accommodations

Total Cabins: 4

Sleeps: 10

Total Heads: 5

Crew Cabin: 3

Crew Berths: 3

Crew Heads: 1

Hull and Deck Information

Hull Material: Steel

Deck Material: Teak

Hull Configuration: Full Displacement

Hull Color: Majestic Blue

Hull Designer: Rene van der Velden

Exterior Designer: Rene van der Velden

Interior Designer: Laura Pomponi

Engine Information

Engines: 2

Manufacturer: Caterpillar

Engine Type: Inboard

Fuel Type: Diesel

PHOTOS

Dining



Saloon



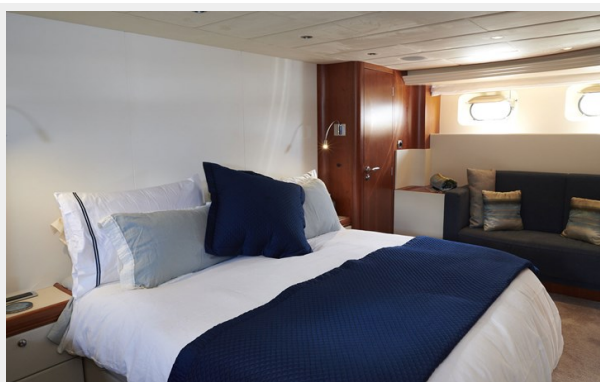
Saloon port side



Saloon



Master cabin



Master cabin



Master head



VIP cabin



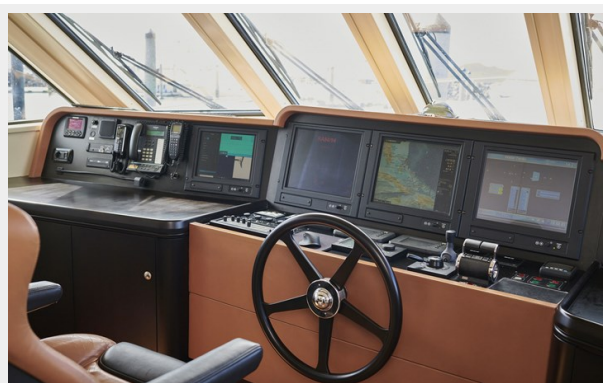
Triple berth cabin



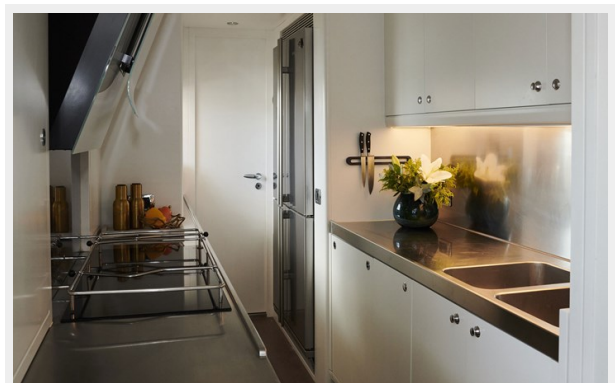
Twin & double



Wheelhouse



Galley



Flybridge



Aft deck



Flybridge aft



Stern extension



CONTACTS

Andrey Shestakov, leading yacht broker of the sales department of Shestakov Yacht Sales Inc. Shestakov Yacht Sales Inc., the official representative of the Miami/Fort Lauderdale FL headquarters.

Contact details

Email: andrey@shestakovyachtsales.com

Web: shestakovyachtsales.com/en/

Telephones

USA: +1(954)274-4435

Office hours

Monday – Saturday: **9:00 - 21:00** EDT

Sunday: **closed**

Address



Harbour Towne Marina, 850 NE 3rd St,
STE 213, Dania, FL 33004