

MR MOUSE — AVANGARD YACHTS



Builder: AVANGARD YACHTS

Year Built: 2012

Model: Motor Yacht

Price: PRICE ON APPLICATION

Location: Greece

LOA: 138' (42.06mm)

Beam: 25.25

Min Draft: 8' (2.44mm)

Max Draft: 8' (2.44mm)

Cruise Speed: 12 Knots Kts. (14 MPH)

Max Speed: 14 Knots Kts. (16 MPH)

Our experienced yacht broker, Andrey Shestakov, will help you choose and buy a yacht that best suits your needs **MR MOUSE — AVANGARD YACHTS** from **our catalogue**. Presently, at **Shestakov Yacht Sales Inc.**, we have a wide variety of yachts available on **our sale's list**. We also work in close contact with all the big **yacht manufacturers** from all over the world.

If you would like to buy a yacht **MR MOUSE — AVANGARD YACHTS** or would like help answering any questions concerning purchasing, selling or chartering a yacht, please call **+1(954)274-4435**

TABLE OF CONTENTS

TABLE OF CONTENTS	2
SPECIFICATIONS	3
Overview	3
Basic Information	3
Dimensions	3
Speed, Capacities and Weight	3
Accommodations	4
Hull and Deck Information	4
Engine Information	4
PHOTOS	5
CONTACTS	11
Contact details	11
Telephones	11
Office hours	11
Address	11

SPECIFICATIONS

Overview

"Mr. Mouse" is a 42-meter tri-deck luxury expedition yacht, built to the highest standards offering unmatched stability and long-range cruising capabilities. She accommodates 10 guests in five staterooms plus crew. Her steel hull and steel superstructure are powered by twin MTU 12V2000 M70 engines which have an impressive 3500nm range at 11 knots. **The owner took official delivery April 2018; "Mr. Mouse" is in mint condition. Motivated seller.**

Basic Information

Category: Motor Yacht

Sub Category: Expedition/Explorer

Model Year: 2012

Year Built: 2012

Country: Greece

Dimensions

LOA: 138' (42.06mm)

Beam: 25.25

Min Draft: 8' (2.44mm)

Max Draft: 8' (2.44mm)

Speed, Capacities and Weight

Cruise Speed: 12 Knots Kts. (14 MPH) **Max Speed:** 14 Knots Kts. (16 MPH)

Gross Tonnage: 297 Pounds

Accommodations

Total Cabins: 5

Sleeps: 10

Total Heads: 7

Hull and Deck Information

Hull Material: Steel

Engine Information

Engines: 2

Manufacturer: MTU

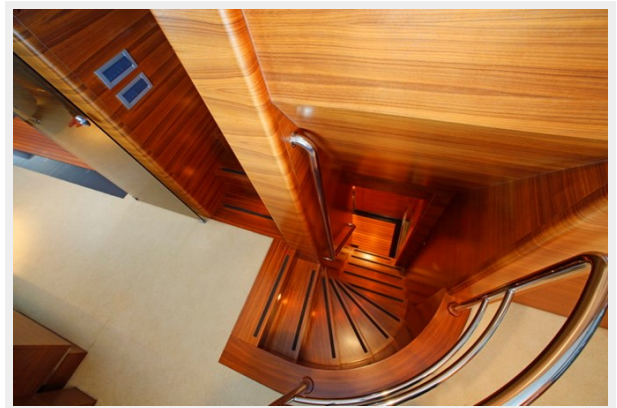
Engine Type: Inboard

Fuel Type: Diesel

PHOTOS

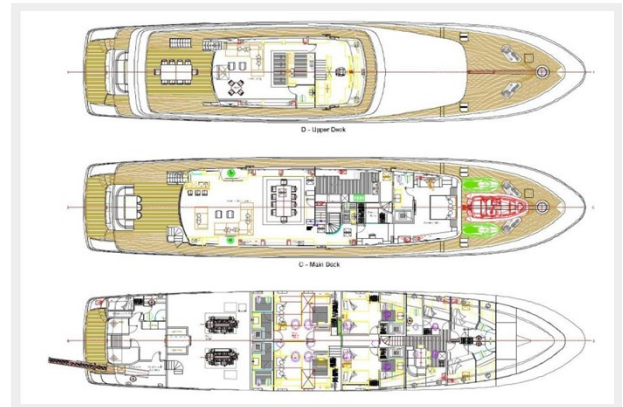
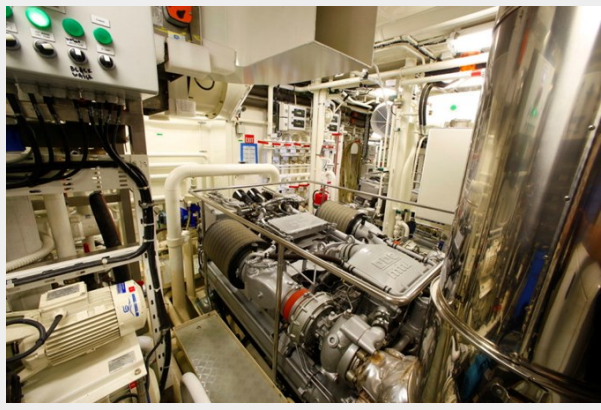












CONTACTS

Andrey Shestakov, leading yacht broker of the sales department of Shestakov Yacht Sales Inc. Shestakov Yacht Sales Inc., the official representative of the Miami/Fort Lauderdale FL headquarters.

Contact details

Email: **andrey@shestakovyachtsales.com**

Web: shestakovyachtsales.com/en/

Telephones

USA: **+1(954)274-4435**

Office hours

Monday – Saturday: **9:00 - 21:00** EDT

Sunday: **closed**

Address



Harbour Towne Marina, 850 NE 3rd St, STE 213, Dania, FL 33004