

GRAND BABY 2 — HATTERAS



Builder: [HATTERAS](#)

Year Built: 1995

Model: Motor Yacht

Price: PRICE ON APPLICATION

Location: United States

LOA: 48' (14.63mm)

Beam: 16

Max Draft: 5' 6" (1.68mm)

Cruise Speed: 12 Knots Kts. (14 MPH)

Max Speed: 20 Knots Kts. (23 MPH)

Our experienced yacht broker, Andrey Shestakov, will help you choose and buy a yacht that best suits your needs **Grand Baby 2 — HATTERAS** from **our catalogue**. Presently, at **Shestakov Yacht Sales Inc.**, we have a wide variety of yachts available on **our sale's list**. We also work in close contact with all the big **yacht manufacturers** from all over the world.

If you would like to buy a yacht **Grand Baby 2 — HATTERAS** or would like help answering any questions concerning purchasing, selling or chartering a yacht, please call **+1(954)274-4435**

TABLE OF CONTENTS

TABLE OF CONTENTS	2
SPECIFICATIONS	4
Overview	4
Basic Information	4
Dimensions	4
Speed, Capacities and Weight	4
Accommodations	4
Hull and Deck Information	5
Engine Information	5
PHOTOS	6
2	6
3	6
4	6
5	6
6	6
7	6
8	7
9	7
10	7
11	7
12	7
13	7
14	8
15	8
16	8
17	8
18	8
19	8

20	9
21	9
22	9
23	9
24	9
25	9
26	10
27	10
28	10
29	10
30	10
31	10
32	11
33	11
34	11
35	11
36	11
37	11
38	12
39	12
40	12
41	12
CONTACTS	13
Contact details	13
Telephones	13
Office hours	13
Address	13

SPECIFICATIONS

Overview

Well maintained motor yacht looking for its next owner!

This is a well equipped and well maintained vessel both cosmetically and mechanically. The exterior has a nice shiny appearance. She is equipped with good electronics including: Garmin chart plotter/depth finder, flat screen TVs, and Sony stereo. The hull has a dark blue vinyl wrap which shows nicely, while protecting the original painted finish. The interior is very clean, well maintained, and organized.

Basic Information

Category: Motor Yacht

Sub Category: Aft Cabin

Model Year: 1995

Year Built: 1995

Country: United States

Dimensions

LOA: 48' (14.63mm)

Beam: 16

Max Draft: 5' 6" (1.68mm)

Speed, Capacities and Weight

Cruise Speed: 12 Knots Kts. (14 MPH) **Max Speed:** 20 Knots Kts. (23 MPH)

Fuel Capacity: 600 Gal Gallons

Accommodations

Total Cabins: 2

Total Heads: 2

Hull and Deck Information

Hull Material: Fiberglass

Engine Information

Engines: 2

Manufacturer: Detroit Diesel

Engine Type: Inboard

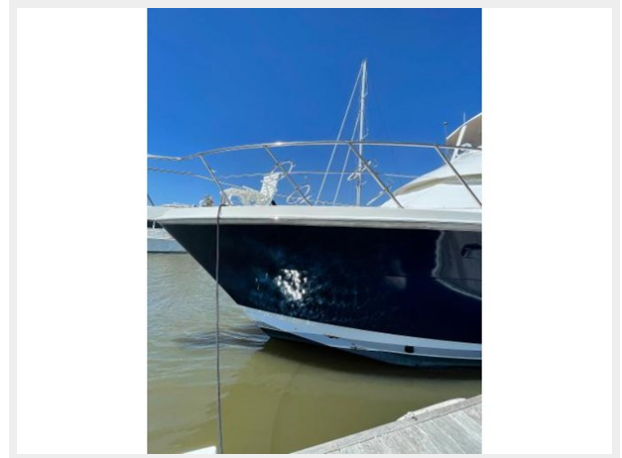
Fuel Type: Diesel

PHOTOS

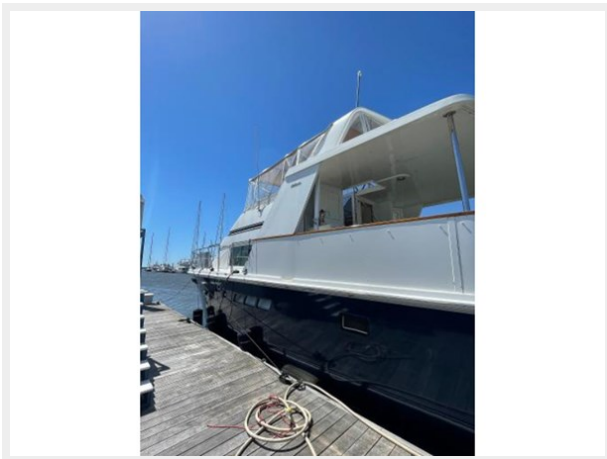
2



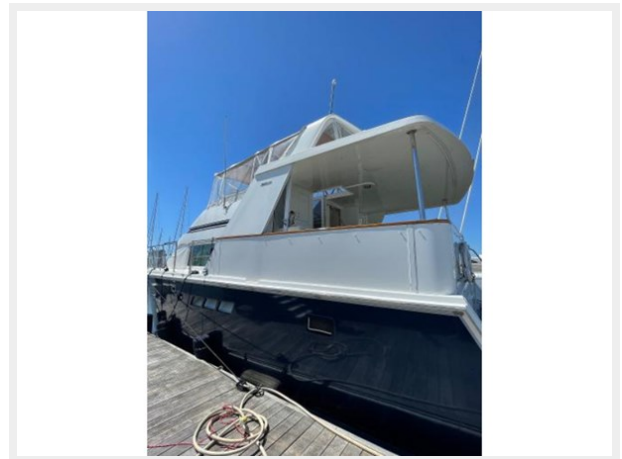
3



4



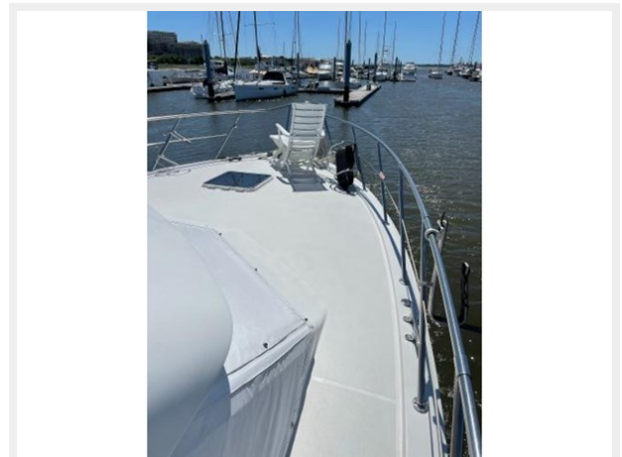
5



6



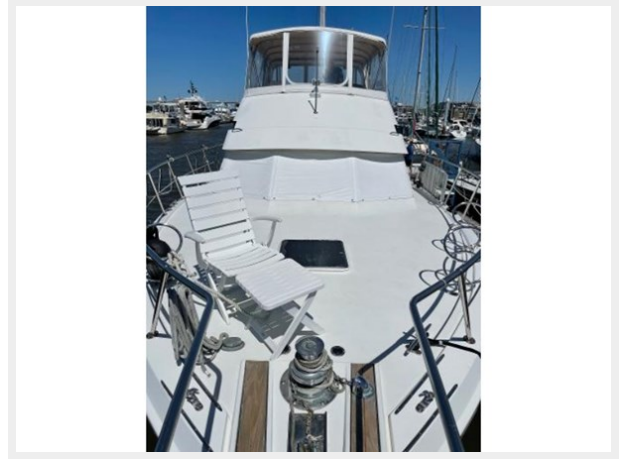
7



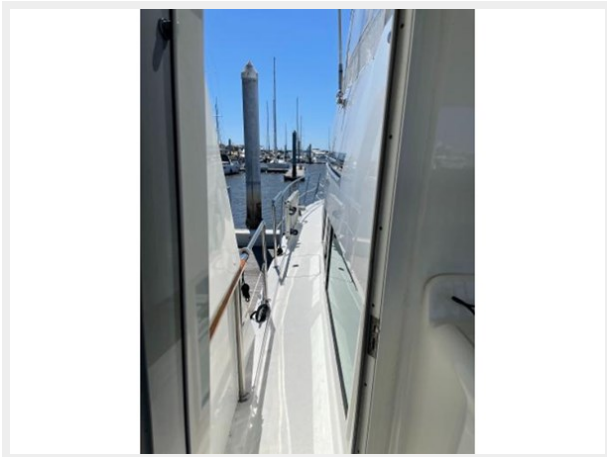
8



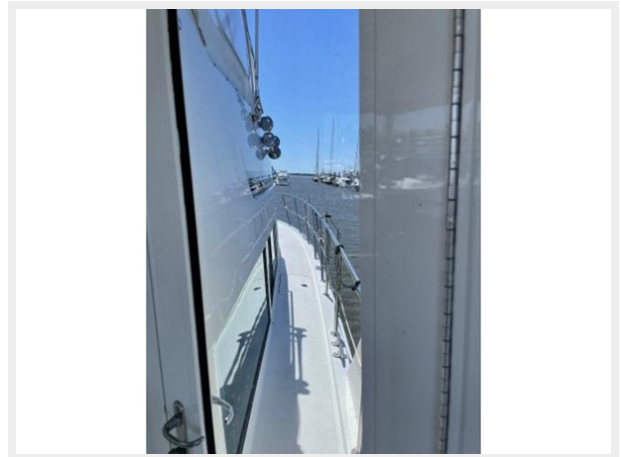
9



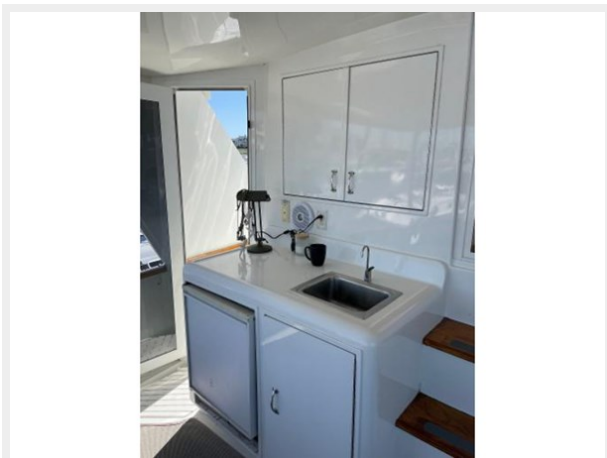
10



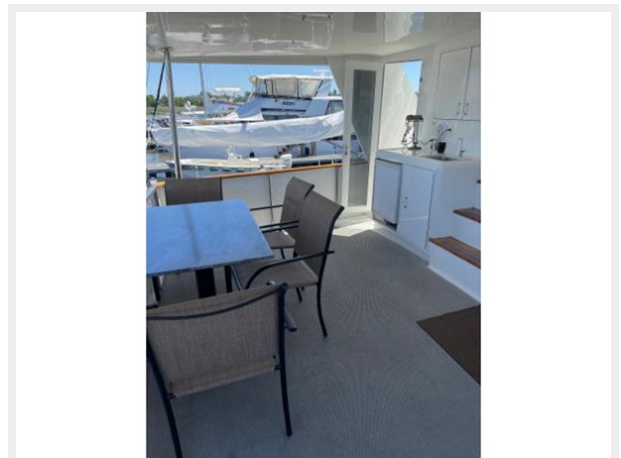
11



12



13



14



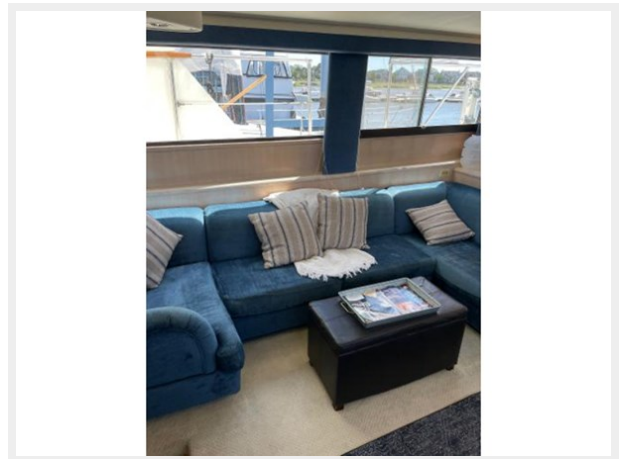
15



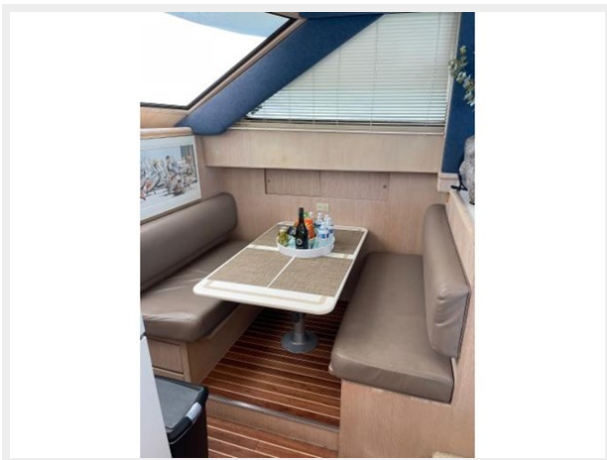
16



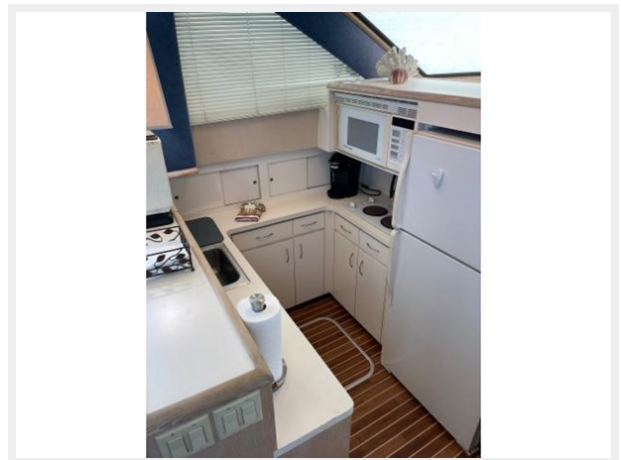
17



18



19



20



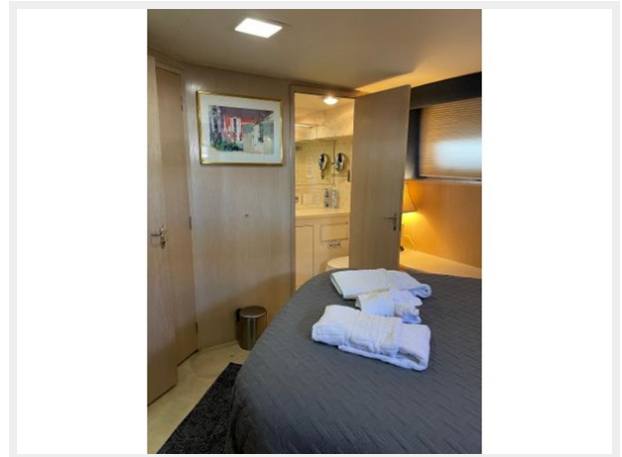
21



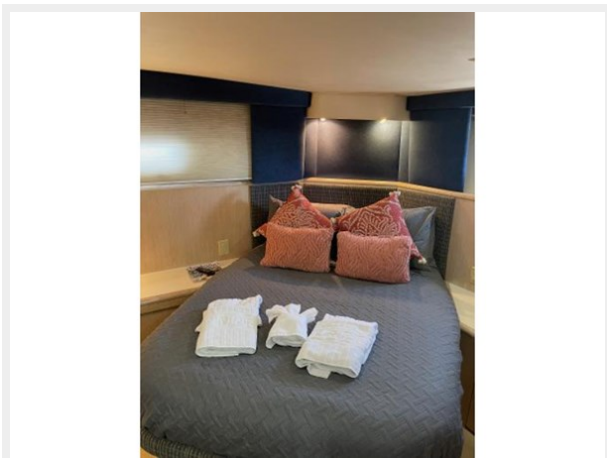
22



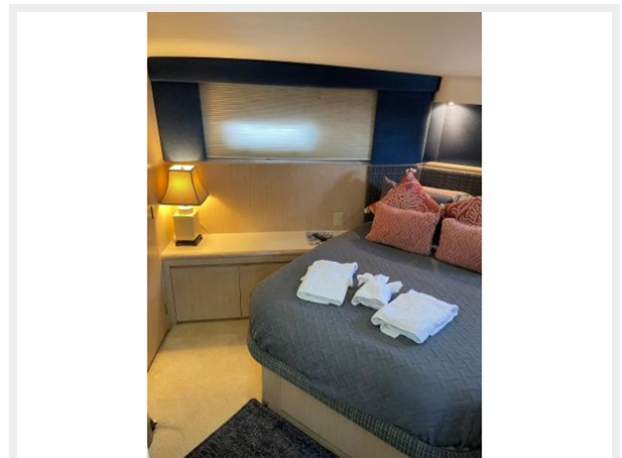
23



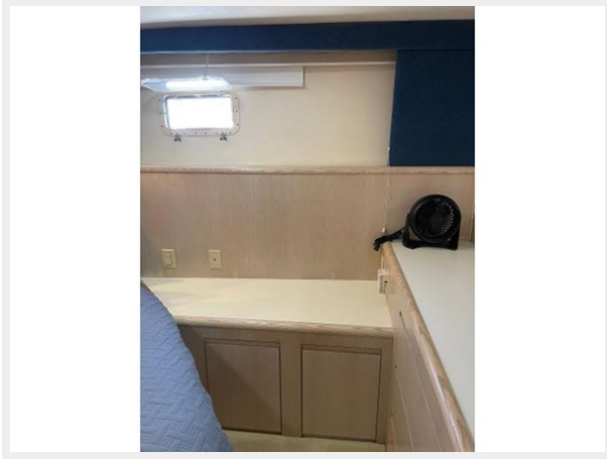
24



25



26



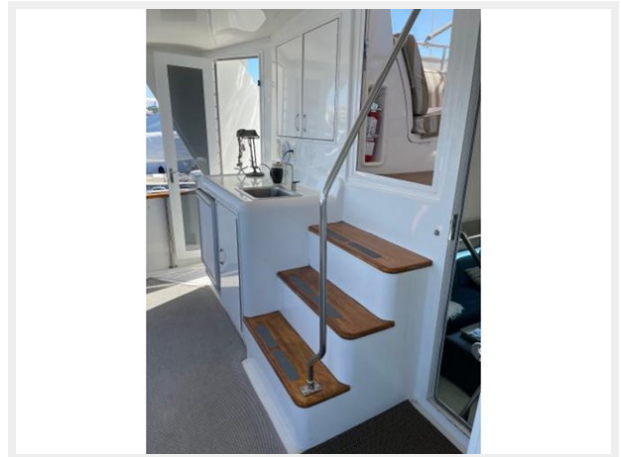
27



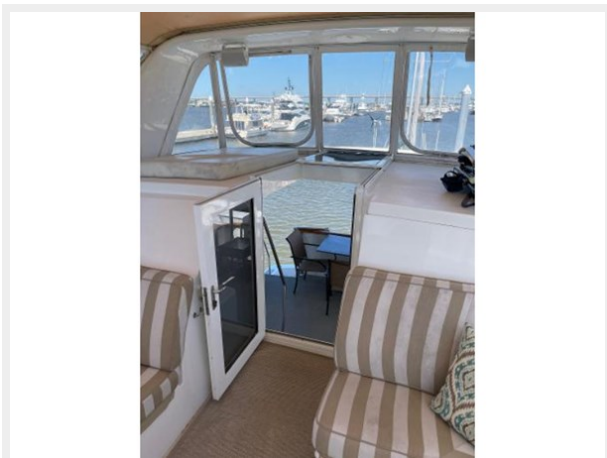
28



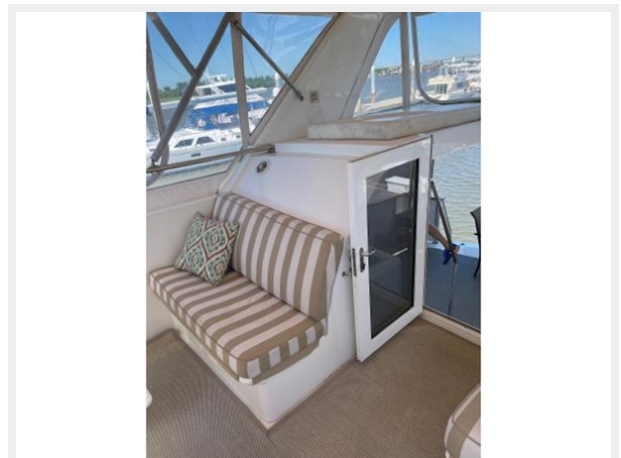
29



30



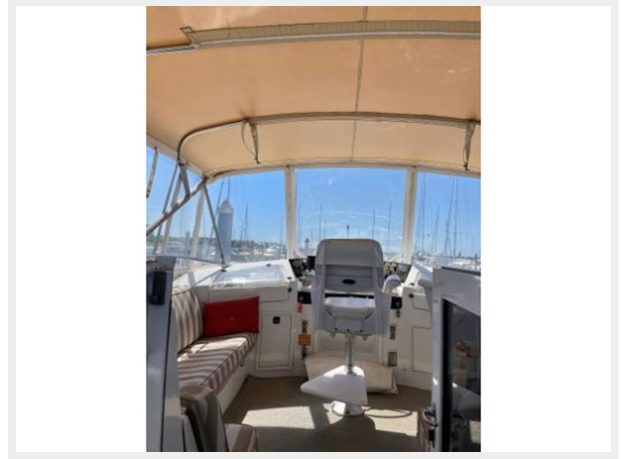
31



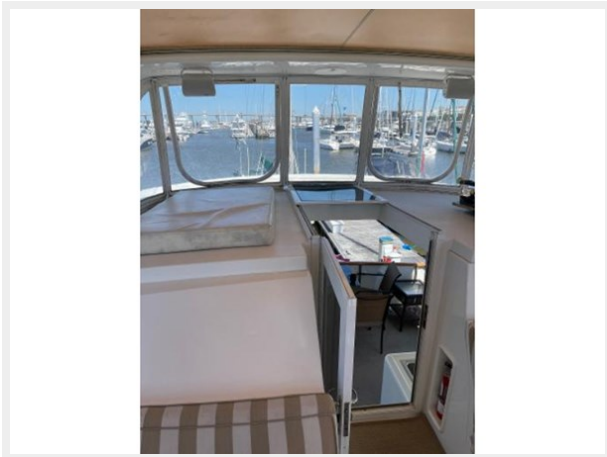
32



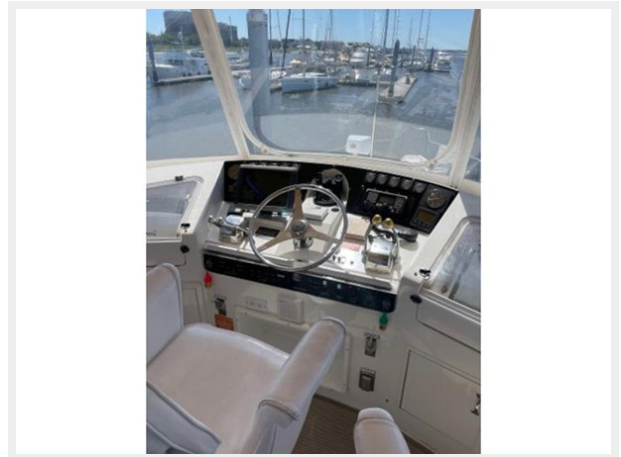
33



34



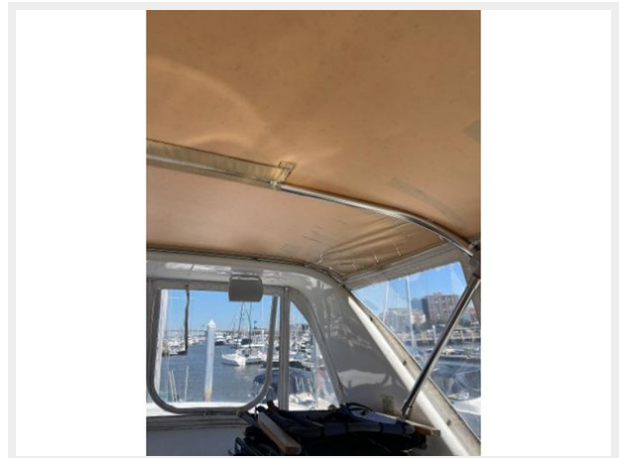
35



36



37



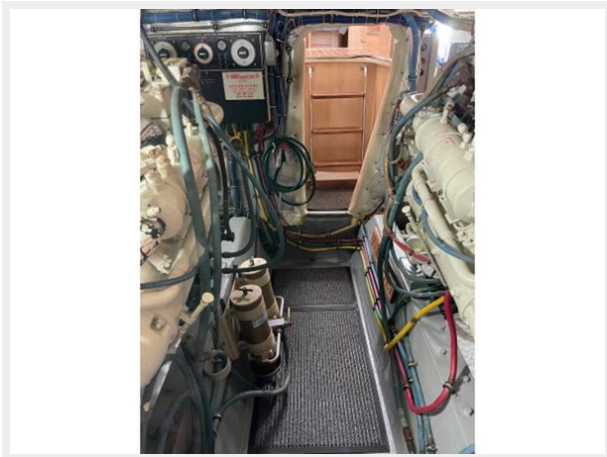
38



39



40



41



CONTACTS

Andrey Shestakov, leading yacht broker of the sales department of Shestakov Yacht Sales Inc. Shestakov Yacht Sales Inc., the official representative of the Miami/Fort Lauderdale FL headquarters.

Contact details

Email: **andrey@shestakovyachtsales.com**

Web: shestakovyachtsales.com/en/

Telephones

USA: **+1(954)274-4435**

Office hours

Monday – Saturday: **9:00 - 21:00** EDT

Sunday: **closed**

Address



Harbour Towne Marina, 850 NE 3rd St, STE 213, Dania, FL 33004