

## BLUE LACE — MIDNIGHT LACE



**Builder:** MIDNIGHT LACE

**Year Built:** 1985

**Model:** Motor Yacht

**Price:** PRICE ON APPLICATION

**Location:** United States

**LOA:** 44' (13.41mm)

**Beam:** 11

**Max Draft:** 2' 10" (0.86mm)

**Cruise Speed:** 15 Knots Kts. (17 MPH)

**Max Speed:** 30 Knots Kts. (35 MPH)

Our experienced yacht broker, Andrey Shestakov, will help you choose and buy a yacht that best suits your needs **Blue Lace — MIDNIGHT LACE** from our catalogue. Presently, at Shestakov Yacht Sales Inc., we have a wide variety of yachts available on our sale's list. We also work in close contact with all the big yacht manufacturers from all over the world.

If you would like to buy a yacht **Blue Lace — MIDNIGHT LACE** or would like help answering any questions concerning purchasing, selling or chartering a yacht, please call **+1(954)274-4435**

---

# TABLE OF CONTENTS

---

TABLE OF CONTENTS	2
SPECIFICATIONS	6
Overview	6
Basic Information	6
Dimensions	7
Speed, Capacities and Weight	7
Accommodations	7
Hull and Deck Information	7
Engine Information	7
PHOTOS	8
IMG_1521	8
IMG_1522	8
IMG_1523	8
IMG_1524	8
IMG_1526	9
IMG_1527	9
IMG_1528	9
IMG_1529	9
IMG_1531	9
IMG_1530	9
IMG_1533	10
IMG_1532	10
IMG_1534	10
IMG_1535	10
IMG_1536	10
IMG_1537	10
IMG_1538	11
IMG_1539	11

---

IMG_1541	11
IMG_1540	11
IMG_1542	12
IMG_1543	12
IMG_1544	12
IMG_1545	12
IMG_1546	13
IMG_1547	13
IMG_1548	13
IMG_1549	13
IMG_1551	13
IMG_1550	13
IMG_1552	14
IMG_1553	14
IMG_1554	14
IMG_1555	14
IMG_1556	15
IMG_1557	15
IMG_1558	15
IMG_1559	15
IMG_1560	16
IMG_1561	16
IMG_1562	16
IMG_1563	16
IMG_1564	17
IMG_1565	17
IMG_1566	17
IMG_1567	17
IMG_1568	17

---

---

IMG_1569	17
IMG_1570	18
IMG_1571	18
IMG_1572	18
IMG_1573	18
IMG_1574	18
IMG_1575	18
IMG_1576	19
IMG_1577	19
IMG_1578	19
IMG_1579	19
IMG_1581	19
IMG_1580	19
IMG_1582	20
IMG_1583	20
IMG_1584	20
IMG_1585	20
IMG_1586	21
IMG_1587	21
IMG_1588	21
IMG_1589	21
IMG_3655	22
IMG_1590	22
IMG_3657	22
IMG_3659	22
IMG_3667	23
IMG_3668	23
CONTACTS	24
Contact details	24

---

---

Telephones	24
Office hours	24
Address	24

---

# SPECIFICATIONS

---

## Overview

---

As originally equipped, most of these boats have insufficient air conditioning to keep the salon comfortable on a hot summer day. The owners have replaced the entire salon air conditioning system and it now holds the salon at 72 degrees on a 98-degree summer day. Hand painted Italian coffee table. In the shower is a sky light etching that is another artistic touch to this fine vessel. She also has at the stern blue underwater lights that add a stunning glow at night.

The Lace is light and fast with twin turbocharged Cummins QSB 380 diesels. She cruises comfortably at 17-19 knots. This beauty turns heads wherever she goes and is known by many from her many magazine covers over the decades. She is definitely one notable part of yachting history. Fexas built 21 of these 44 footers at the Cheoy Lee yard in the late 70s and early 80s and she has been kept under roof for almost her whole life.

Other notable professionally installed upgrades and changes :

- New canvas enclosure of the helm
- Complete canvas enclosure of the entire helm and stern
- Autopilot system
- New Air Conditioning units in salon and bedroom
- Reinforced Connecting Points for dingy davit
- VHF radio including DSC distress calling function
- Entire flag blue hull sanded and re-painted
- Hull refurbished by removing old gel coat, barrier coating hull and re-gelcoating hull
- All cabin windows have been removed, wood surrounding replaced, and windows re-bedded
- 8' dingy, 15hp 2 stroke Mercury outboard, davit and catshead
- New AC/DC inverter with greater power to drive the computer nav system
- New carpet in salon

---

## Basic Information

---

**Category:** Motor Yacht

**Sub Category:** Liveaboard

**Model Year:** 1985

**Year Built:** 1985

**Country:** United States

---

## Dimensions

---

**LOA:** 44' (13.41mm)

**Beam:** 11

**Max Draft:** 2' 10" (0.86mm)

---

## Speed, Capacities and Weight

---

**Cruise Speed:** 15 Knots Kts. (17 MPH)

**Max Speed:** 30 Knots Kts. (35 MPH)

**Water Capacity:** 130 Gallons

**Fuel Capacity:** 250 Gal Gallons

---

## Accommodations

---

**Total Cabins:** 1

**Sleeps:** 4

**Total Heads:** 1

---

## Hull and Deck Information

---

**Hull Material:** Fiberglass

**Hull Configuration:** Modified Deep Vee

**Hull Color:** Blue

**Hull Designer:** Tom Fexas

---

## Engine Information

---

**Engines:** 2

**Manufacturer:** Cummings

# PHOTOS

IMG\_1521



IMG\_1522



IMG\_1523



IMG\_1524





IMG\_1526



IMG\_1527



IMG\_1528



IMG\_1529



IMG\_1531



IMG\_1530



IMG\_1532



IMG\_1533



IMG\_1534



IMG\_1535



IMG\_1536



IMG\_1537



IMG\_1538



IMG\_1539



IMG\_1541



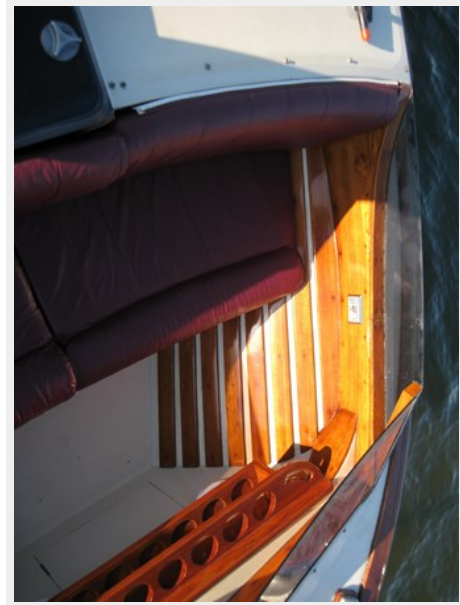
IMG\_1540



IMG\_1542



IMG\_1543



IMG\_1544



IMG\_1545



IMG\_1546



IMG\_1547



IMG\_1548



IMG\_1549



IMG\_1550



IMG\_1551



IMG\_1552



IMG\_1553



IMG\_1554



IMG\_1555



IMG\_1556



IMG\_1557



IMG\_1558



IMG\_1559



IMG\_1560



IMG\_1561



IMG\_1562



IMG\_1563





IMG\_1564



IMG\_1565



IMG\_1566



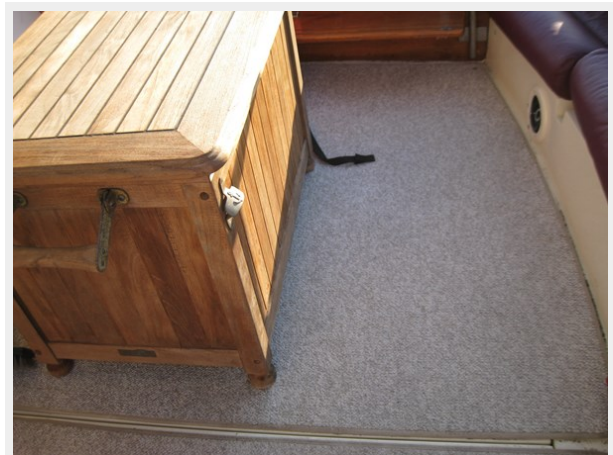
IMG\_1567



IMG\_1568



IMG\_1569



IMG\_1570



IMG\_1571



IMG\_1572



IMG\_1573



IMG\_1574



IMG\_1575



IMG\_1576



IMG\_1577



IMG\_1578



IMG\_1579



IMG\_1580



IMG\_1581



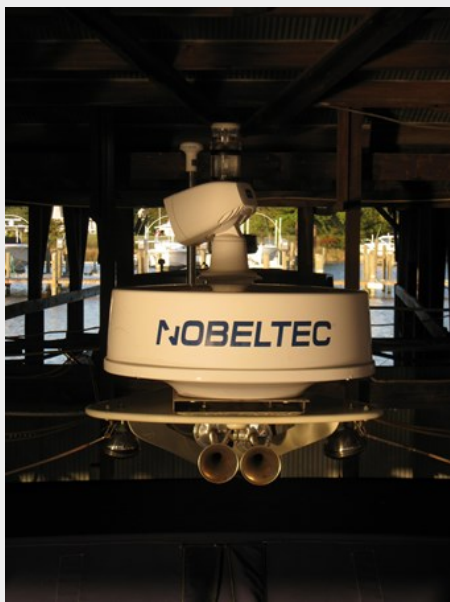
IMG\_1582



IMG\_1583



IMG\_1584



IMG\_1585



IMG\_1586



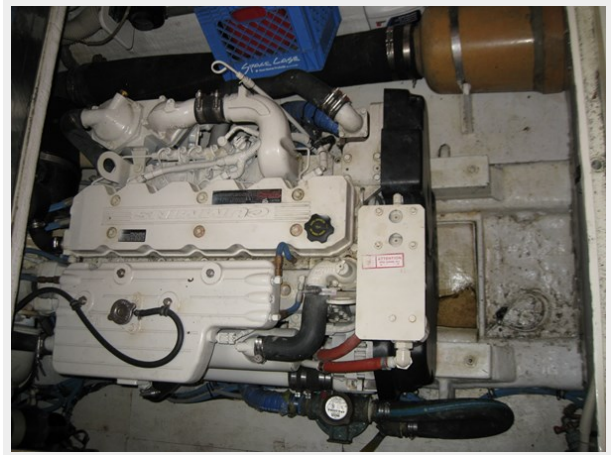
IMG\_1587



IMG\_1588



IMG\_1589



IMG\_1590



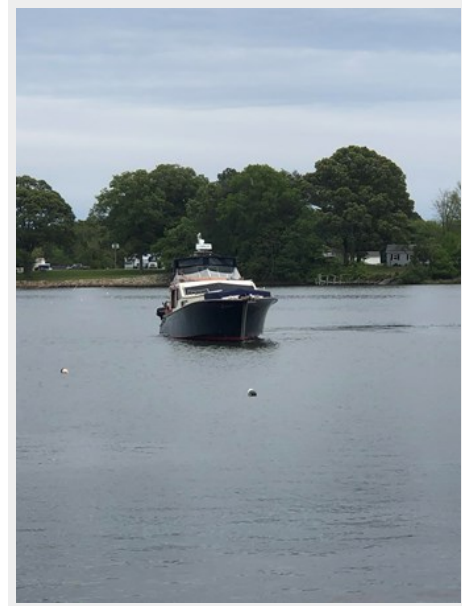
IMG\_3655



IMG\_3657



IMG\_3659



IMG\_3667



IMG\_3668



# CONTACTS

---

Andrey Shestakov, leading yacht broker of the sales department of Shestakov Yacht Sales Inc. Shestakov Yacht Sales Inc., the official representative of the Miami/Fort Lauderdale FL headquarters.

## Contact details

---

Email: [andrey@shestakovyachtsales.com](mailto:andrey@shestakovyachtsales.com)

Web: [shestakovyachtsales.com/en/](http://shestakovyachtsales.com/en/)

## Telephones

---

USA: +1(954)274-4435

## Office hours

---

Monday – Saturday: **9:00 - 21:00** EDT

Sunday: **closed**

## Address

---



Harbour Towne Marina, 850 NE 3rd St,  
STE 213, Dania, FL 33004