

TRYST — PRESTIGE



Builder: PRESTIGE

Year Built: 2014

Model: Motor Yacht

Price: PRICE ON APPLICATION

Location: United States

LOA: 62' (18.9mm)

Beam: 16.91

Max Draft: 4' 3" (1.3mm)

Our experienced yacht broker, Andrey Shestakov, will help you choose and buy a yacht that best suits your needs **TRYST — PRESTIGE** from our catalogue. Presently, at Shestakov Yacht Sales Inc., we have a wide variety of yachts available on our sale's list. We also work in close contact with all the big yacht manufacturers from all over the world.

If you would like to buy a yacht **TRYST — PRESTIGE** or would like help answering any questions concerning purchasing, selling or chartering a yacht, please call **+1(954)274-4435**

TABLE OF CONTENTS

TABLE OF CONTENTS	2
SPECIFICATIONS	5
Overview	5
Basic Information	5
Dimensions	5
Speed, Capacities and Weight	6
Accommodations	6
Hull and Deck Information	6
Engine Information	6
PHOTOS	7
2	7
3	7
4	7
5	7
6	7
7	7
8	8
9	8
10	8
11	8
12	8
13	8
14	9
15	9
16	9
17	9
18	9
19	9

20	10
21	10
22	10
23	10
25	10
24	10
26	11
27	11
28	11
29	11
30	11
31	11
32	12
33	12
34	12
35	12
36	12
37	12
38	13
39	13
40	13
41	13
42	13
43	13
45	14
44	14
46	14
47	14
49	15

48	15
50	15
51	15
53	16
52	16
54	16
55	16
56	16
57	16
58	17
59	17
60	17
61	17
62	17
63	17
65	18
64	18
66	18
CONTACTS	19
Contact details	19
Telephones	19
Office hours	19
Address	19

SPECIFICATIONS

Overview

"Tryst" is a beautiful 620 Prestige Flybridge 2014 located in Ft. Lauderdale, FL. She was a fresh water boat until late 2018 and stored in a boathouse under cover. The IPS 900's are up-to-date on services and have under 850hrs.

Call/Text anytime to schedule a showing or present an offer.

Key Features:

- Fully Loaded Boat with All the Options
- Upgraded Volvo IPS900's (under 900hrs)
- Dynamic Positioning System (DPS) to "Hold" Boat in Place (\$20K Feature)
- Hydraulic Swim Platform
- Hard Top (\$70K Option)
- Fresh Water Maker
- Sunshade
- Updated Garmin EchoMap+ 94 Chart Plotter on Flybridge
- Underwater Lights
- Washer/Dryer
- Upper and Lower Helm Stations and Docking Station
- 3 Stateroom/3 Head Layout with Full Beam Master + Crew for 2
- Galley Aft With Sliding Glass Salon Doors for Open Feel
- Spacious Flybridge with Grill, Sink, Ice Maker, and FULL SIZE Fridge
- SAT TV TracVision
- Cockpit Volvo Joystick Docking Station (3 Stations Total)

Basic Information

Category: Motor Yacht

Model Year: 2014

Year Built: 2014

Country: United States

Dimensions

LOA: 62' (18.9mm)

Beam: 16.91

Max Draft: 4' 3" (1.3mm)

Speed, Capacities and Weight

Water Capacity: 212 Gallons

Holding Tank: 87 Gal Gallons

Fuel Capacity: 741 Gal Gallons

Accommodations

Total Cabins: 4

Total Heads: 4

Hull and Deck Information

Hull Material: Fiberglass

Engine Information

Engines: 2

Manufacturer: Volvo

Engine Type: Inboard

Fuel Type: Diesel

PHOTOS

2



3



4



5



6



7



8



9



10



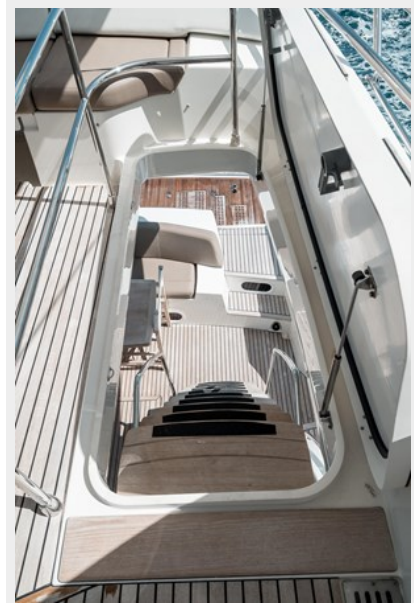
11



12



13



14



15



16



17



18



19



20



21



22



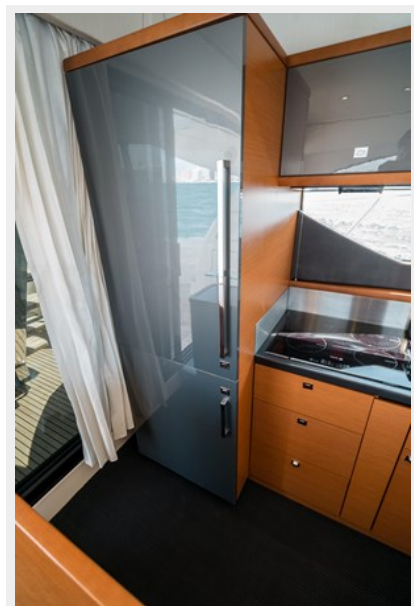
23



24



25



26



27



28



29



30



31



32



33



34



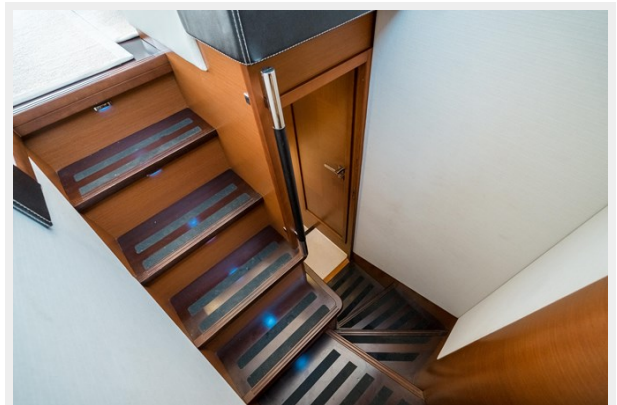
35



36



37



38



39



40



41



42



43



44



45



46



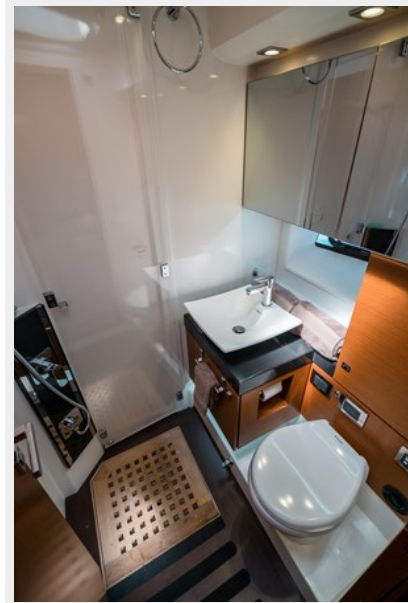
47



48



49



50



51



52



53



54



55



56



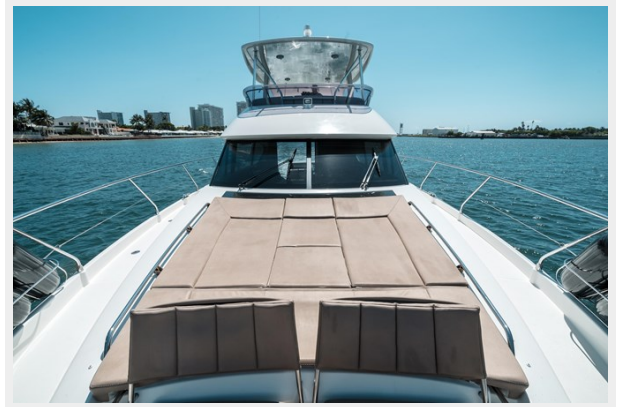
57



58



59



60



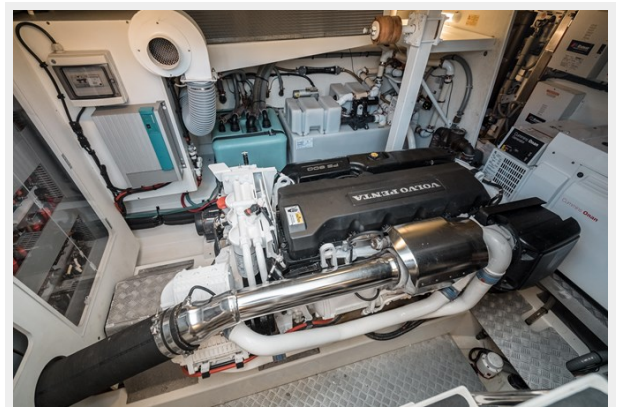
61



62



63



64



65



66



CONTACTS

Andrey Shestakov, leading yacht broker of the sales department of Shestakov Yacht Sales Inc. Shestakov Yacht Sales Inc., the official representative of the Miami/Fort Lauderdale FL headquarters.

Contact details

Email: andrey@shestakovyachtsales.com

Web: shestakovyachtsales.com/en/

Telephones

USA: +1(954)274-4435

Office hours

Monday – Saturday: **9:00 - 21:00** EDT

Sunday: **closed**

Address



Harbour Towne Marina, 850 NE 3rd St,
STE 213, Dania, FL 33004