

SL102A — SANLORENZO



Builder: SANLORENZO

Year Built: 2020

Model: Motor Yacht

Price: PRICE ON APPLICATION

LOA: 102' (31.08m)

Beam: 23.16

Cruise Speed: 24 Knots Kts. (28 MPH)

Max Speed: 28 Knots Kts. (32 MPH)

Our experienced yacht broker, Andrey Shestakov, will help you choose and buy a yacht that best suits your needs **SL102A — SANLORENZO** from our catalogue. Presently, at **Shestakov Yacht Sales Inc.**, we have a wide variety of yachts available on our sale's list. We also work in close contact with all the big yacht manufacturers from all over the world.

If you would like to buy a yacht **SL102A — SANLORENZO** or would like help answering any questions concerning purchasing, selling or chartering a yacht, please call **+1(954)274-4435**

TABLE OF CONTENTS

| | |
|------------------------------|---|
| TABLE OF CONTENTS | 2 |
| SPECIFICATIONS | 4 |
| Overview | 4 |
| Basic Information | 4 |
| Dimensions | 4 |
| Speed, Capacities and Weight | 4 |
| Accommodations | 4 |
| Hull and Deck Information | 5 |
| Engine Information | 5 |
| PHOTOS | 6 |
| 3 | 6 |
| 4 | 6 |
| 5 | 6 |
| 6 | 6 |
| 7 | 6 |
| 8 | 6 |
| 10 | 7 |
| 9 | 7 |
| 11 | 7 |
| 12 | 7 |
| 14 | 7 |
| 13 | 7 |
| 15 | 8 |
| 16 | 8 |
| CONTACTS | 9 |
| Contact details | 9 |
| Telephones | 9 |
| Office hours | 9 |

Address

9

SPECIFICATIONS

Overview

This Sanlorenzo SL102A that just hit the market. Is not just any SL102A. She was constructed and delivered the end of 2020 (warranty until the end of 2022) to a very prestigious Sanlorenzo client, who has much experience in yachting, therefore we can confirm she is in an ideal configuration.

This yacht has been used for 2 weeks in august last year by the current owner, having 60 engine hours now. He has decided to go for a larger Sanlorenzo so the option is very unique. In terms of price and availability. She was constructed under MCA, giving the potential buyer the opportunity to charter her in Europe everywhere.

She is ready for a viewing and visit in Antibes any time, her annual servicing has all been executed by the shipyard, leaving her in a turn-key position.

Be fast because this yacht will sell rapidly.

Basic Information

Category: Motor Yacht

Model Year: 2020

Year Built: 2020

Dimensions

LOA: 102' (31.08mm)

Beam: 23.16

Speed, Capacities and Weight

Cruise Speed: 24 Knots Kts. (28 MPH) **Max Speed:** 28 Knots Kts. (32 MPH)

Accommodations

Total Cabins: 5

Hull and Deck Information

Hull Material: GRP

Engine Information

Engines: 2

Manufacturer: MTU

Engine Type: Inboard

Fuel Type: Diesel

PHOTOS

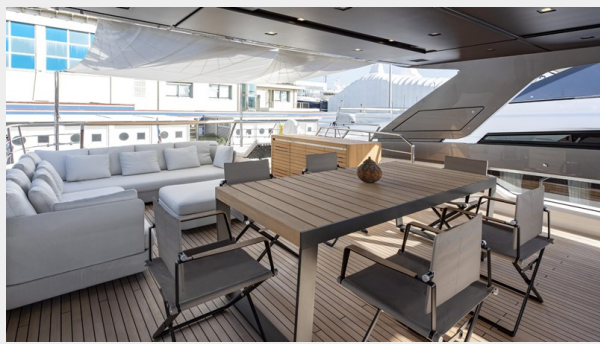
3



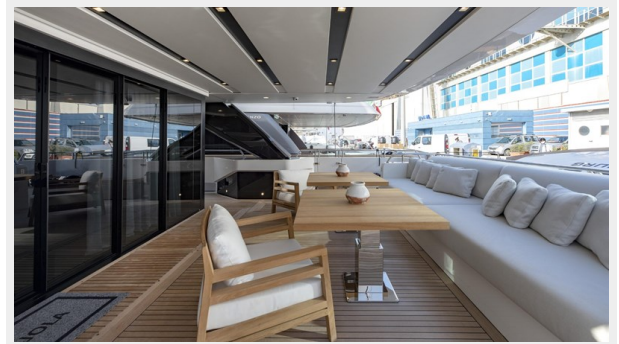
4



5



6



7



8



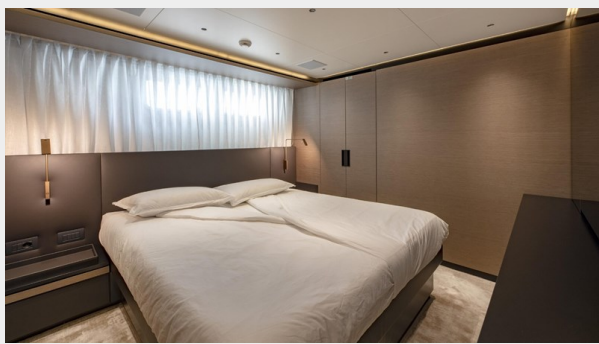
9



10



11



12



13



14



15



16



CONTACTS

Andrey Shestakov, leading yacht broker of the sales department of Shestakov Yacht Sales Inc. Shestakov Yacht Sales Inc., the official representative of the Miami/Fort Lauderdale FL headquarters.

Contact details

Email: **andrey@shestakovyachtsales.com**

Web: shestakovyachtsales.com/en/

Telephones

USA: **+1(954)274-4435**

Office hours

Monday – Saturday: **9:00 - 21:00** EDT

Sunday: **closed**

Address



Harbour Towne Marina, 850 NE 3rd St, STE 213, Dania, FL 33004