

LEGACY 40 — FALCON



Builder: FALCON

Year Built: 2022

Model: Flybridge

Price: PRICE ON APPLICATION

Location: Italy

LOA: 131' 3" (40mm)

Beam: 27.23

Min Draft: 5' 11" (1.8mm)

Cruise Speed: 22 Knots Kts. (25 MPH)

Max Speed: 27 Knots Kts. (31 MPH)

Our experienced yacht broker, Andrey Shestakov, will help you choose and buy a yacht that best suits your needs **LEGACY 40 — FALCON** from our catalogue. Presently, at Shestakov Yacht Sales Inc., we have a wide variety of yachts available on our sale's list. We also work in close contact with all the big yacht manufacturers from all over the world.

If you would like to buy a yacht **LEGACY 40 — FALCON** or would like help answering any questions concerning purchasing, selling or chartering a yacht, please call **+1(954)274-4435**

TABLE OF CONTENTS

TABLE OF CONTENTS	2
SPECIFICATIONS	3
Overview	3
Basic Information	3
Dimensions	3
Speed, Capacities and Weight	3
Accommodations	4
Hull and Deck Information	4
Engine Information	4
PHOTOS	5
Profile	5
Panoramic view	5
Panoramic view	5
Panoramic Aft view	5
Poolarea	5
Foyer	5
Main Saloon	6
Owner Swite	6
Owner Swite	6
VIP Cabin	6
Vip Bathroom	6
General Arrangement	6
CONTACTS	7
Contact details	7
Telephones	7
Office hours	7
Address	7

SPECIFICATIONS

Overview

JOIN CENTRAL AGENCY.

The first launch in the Legacy Line superyachts by Italian yacht builder Falcon Yachts was designed by Quartostile studio, with a delivery time forecasted within a year. Her sleek yacht lines are timeless and powerful, yet elegant. The 40-meter boat hull of this superyacht has been created for an active yacht owner who loves spending his time with friends and family onboard. The bow is slim but vividly benefits from the yacht hull's lines in the external design. The stem section of the luxury motor yacht is reminiscent of a torpedo and can open completely, converting into a huge beach club to allow guests full access to the sea.

Basic Information

Category: Flybridge	Sub Category: Flybridge
Model Year: 2022	Year Built: 2022
Country: Italy	

Dimensions

LOA: 131' 3" (40mm)	LWL: 110' 7" (33.7mm)
Beam: 27.23	Min Draft: 5' 11" (1.8mm)

Speed, Capacities and Weight

Cruise Speed: 22 Knots Kts. (25 MPH)	Max Speed: 27 Knots Kts. (31 MPH)
Gross Tonnage: 380 Pounds	Water Capacity: 4000 Gallons
Fuel Capacity: 6604.3 Gal Gallons	

Accommodations

Total Cabins: 5

Hull and Deck Information

Hull Material: Aluminum

Exterior Designer: QUARTOSTILE

Interior Designer: QUARTOSTILE

Engine Information

Engines: 2

Manufacturer: MTU

Engine Type: Inboard

Fuel Type: Diesel

PHOTOS

Profile



Panoramic view



Panoramic view



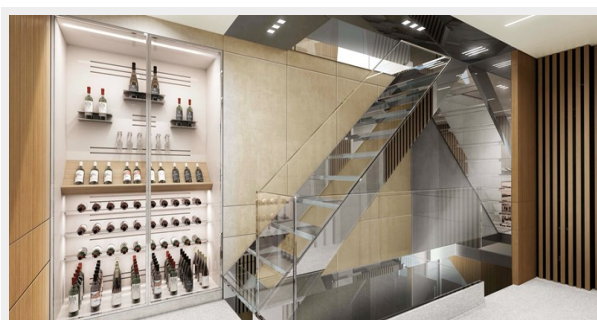
Panoramic Aft view

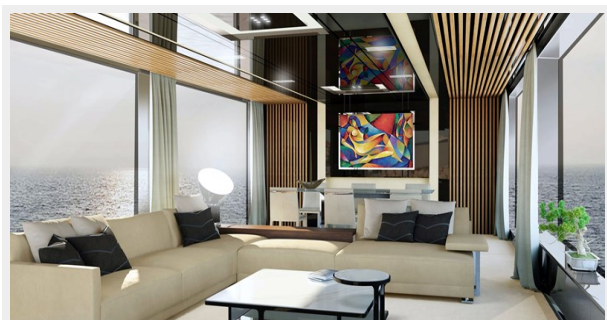
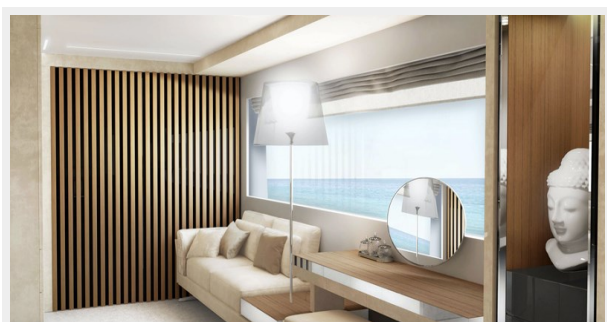
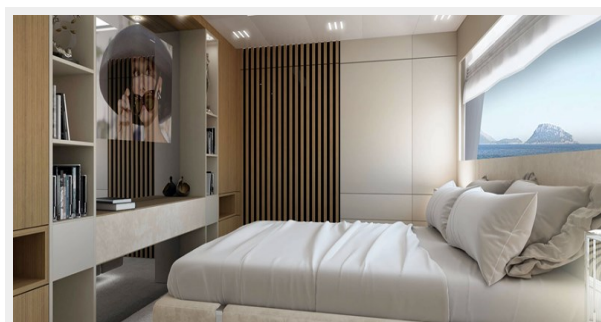
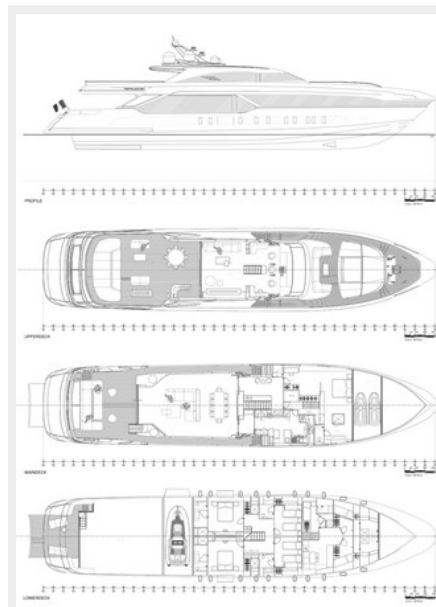


Poolarea



Foyer



Main Saloon**Owner Suite****Owner Suite****VIP Cabin****Vip Bathroom****General Arrangement**

CONTACTS

Andrey Shestakov, leading yacht broker of the sales department of Shestakov Yacht Sales Inc. Shestakov Yacht Sales Inc., the official representative of the Miami/Fort Lauderdale FL headquarters.

Contact details

Email: **andrey@shestakovyachtsales.com**

Web: shestakovyachtsales.com/en/

Telephones

USA: **+1(954)274-4435**

Office hours

Monday – Saturday: **9:00 - 21:00 EDT**

Sunday: **closed**

Address



Harbour Towne Marina, 850 NE 3rd St,
STE 213, Dania, FL 33004