

MI CASITA — CHB



Builder: [CHB](#)

Year Built: 1986

Model: Trawler Yacht

Price: PRICE ON APPLICATION

Location: United States

LOA: 41' 10" (12.75mm)

Beam: 13.66

Max Draft: 3' 6" (1.07mm)

Our experienced yacht broker, Andrey Shestakov, will help you choose and buy a yacht that best suits your needs **Mi Casita — CHB** from **our catalogue**. Presently, at **Shestakov Yacht Sales Inc.**, we have a wide variety of yachts available on **our sale's list**. We also work in close contact with all the big **yacht manufacturers** from all over the world.

If you would like to buy a yacht **Mi Casita — CHB** or would like help answering any questions concerning purchasing, selling or chartering a yacht, please call **+1(954)274-4435**

TABLE OF CONTENTS

TABLE OF CONTENTS	2
SPECIFICATIONS	5
Basic Information	5
Dimensions	5
Speed, Capacities and Weight	5
Accommodations	5
Hull and Deck Information	5
Engine Information	5
PHOTOS	6
IMG_0246	6
IMG_0243	6
IMG_0242	6
IMG_0205	6
IMG_0202	6
IMG_0204	6
IMG_0203	7
IMG_0229	7
IMG_0228	7
IMG_0232	7
IMG_0235	7
IMG_0206	7
IMG_0208	8
IMG_0211	8
IMG_0209	8
IMG_0207	8
IMG_0210	8
IMG_0214	8
IMG_0213	9

IMG_0217	9
IMG_0218	9
IMG_0215	9
IMG_0220	9
IMG_0221	9
IMG_0222	10
IMG_0223	10
IMG_0212	10
IMG_0216	10
IMG_0219	10
IMG_0224	10
IMG_0225	11
IMG_0226	11
IMG_0231	11
IMG_0227	11
IMG_0196	11
IMG_0230	11
IMG_0197	12
IMG_0195	12
IMG_0233	12
IMG_0199	12
IMG_0234	12
IMG_0244	12
IMG_0201	13
IMG_0245	13
IMG_0200	13
IMG_0198	13
IMG_0247	13
CONTACTS	14

Contact details	14
Telephones	14
Office hours	14
Address	14

SPECIFICATIONS

Basic Information

Category: Trawler Yacht

Sub Category: Double Cabin

Model Year: 1986

Year Built: 1986

Country: United States

Dimensions

LOA: 41' 10" (12.75mm)

Beam: 13.66

Max Draft: 3' 6" (1.07mm)

Speed, Capacities and Weight

Water Capacity: 150 Gallons

Fuel Capacity: 400 Gal Gallons

Accommodations

Total Cabins: 2

Total Heads: 1

Hull and Deck Information

Hull Material: Fiberglass

Deck Material: Teak

Engine Information

Engines: 1

Manufacturer: Perkins Diesel

Engine Type: Inboard

Fuel Type: Diesel

PHOTOS

IMG_0246



IMG_0243



IMG_0242



IMG_0205



IMG_0202



IMG_0204



IMG_0203



IMG_0229



IMG_0228



IMG_0232



IMG_0235



IMG_0206



IMG_0208



IMG_0211



IMG_0209



IMG_0207



IMG_0210



IMG_0214



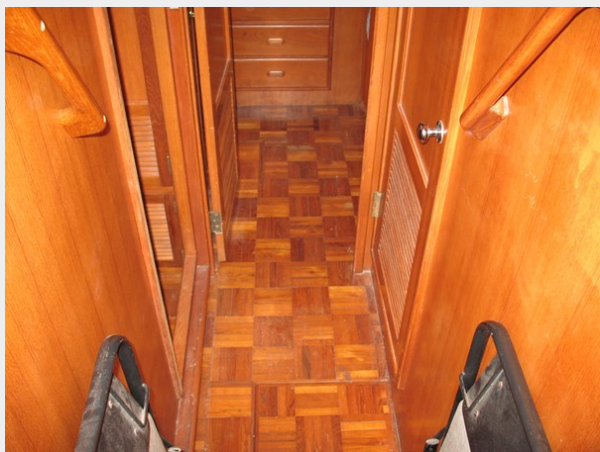
IMG_0213



IMG_0217



IMG_0218



IMG_0215



IMG_0220



IMG_0221



IMG_0222



IMG_0223



IMG_0212



IMG_0216



IMG_0219



IMG_0224



IMG_0225



IMG_0226



IMG_0231



IMG_0227



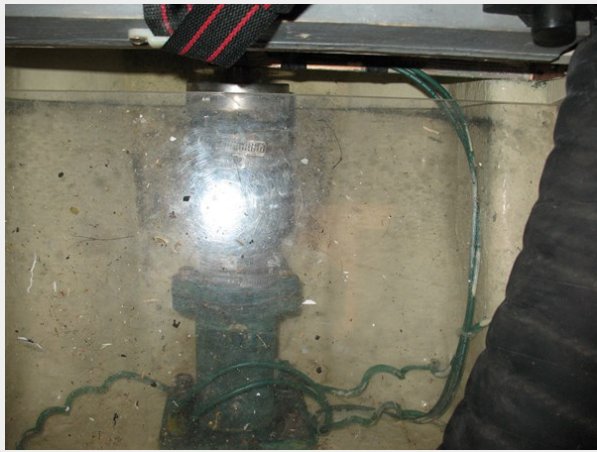
IMG_0196



IMG_0230



IMG_0197



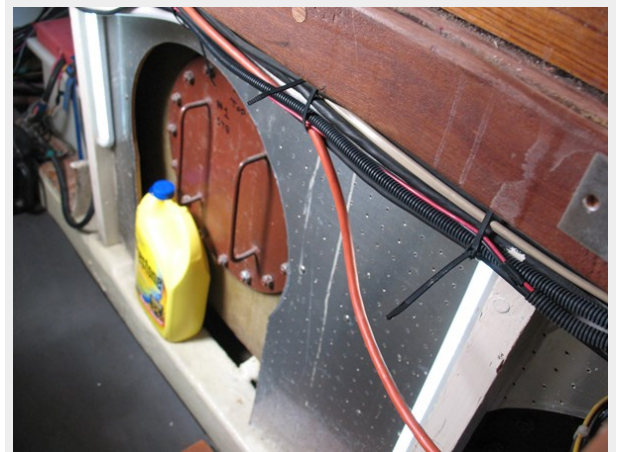
IMG_0195



IMG_0233



IMG_0199



IMG_0234



IMG_0244



IMG_0201



IMG_0245



IMG_0200



IMG_0198



IMG_0247



CONTACTS

Andrey Shestakov, leading yacht broker of the sales department of Shestakov Yacht Sales Inc. Shestakov Yacht Sales Inc., the official representative of the Miami/Fort Lauderdale FL headquarters.

Contact details

Email: **andrey@shestakovyachtsales.com**

Web: shestakovyachtsales.com/en/

Telephones

USA: **+1(954)274-4435**

Office hours

Monday – Saturday: **9:00 - 21:00** EDT

Sunday: **closed**

Address



Harbour Towne Marina, 850 NE 3rd St, STE 213, Dania, FL 33004