

KATIE MARIE — MARLOW



Builder: MARLOW

Year Built: 2016

Model: Motor Yacht

Price: PRICE ON APPLICATION

Location: United States

LOA: 67' 8" (20.62mm)

Beam: 18.5

Max Draft: 4' 10" (1.47mm)

Cruise Speed: 22 Knots Kts. (25 MPH)

Max Speed: 26 Knots Kts. (30 MPH)

Our experienced yacht broker, Andrey Shestakov, will help you choose and buy a yacht that best suits your needs **Katie Marie — MARLOW** from our catalogue. Presently, at **Shestakov Yacht Sales Inc.**, we have a wide variety of yachts available on our sale's list. We also work in close contact with all the big yacht manufacturers from all over the world.

If you would like to buy a yacht **Katie Marie — MARLOW** or would like help answering any questions concerning purchasing, selling or chartering a yacht, please call **+1(954)274-4435**

TABLE OF CONTENTS

TABLE OF CONTENTS	2
SPECIFICATIONS	5
Overview	5
Basic Information	5
Dimensions	5
Speed, Capacities and Weight	6
Accommodations	6
Hull and Deck Information	6
Engine Information	6
PHOTOS	7
Aft Portside View	7
Aft Starboard View	7
Aft	7
Portside View	7
Aft Deck facing Starboard	7
Cockpit facing Forward	7
Salon Entry facing Forward	8
Salon Facing Starboard	8
Salon facing Starboard Aft	8
Galley with Seating	8
Galley facing Starboard	8
Galley	8
Dining facing Forward	9
Stairs leading to Staterooms	9
Companioway facing Aft	9
Master Stateroom facing Aft	9
Master facing Starboard	9
Master facing forward Port/Forward	9

Master Head	10
Companionway facing Forward	10
VIP Stateroom	10
VIP facing Port	10
Port Guest Stateroom	10
VIP Head	10
Cockpit facing Aft	11
Cockpit facing Port	11
Cockpit Grill & Docking Station	11
Cockpit Stairs to Flybrige	11
Flybridge Seating facing Forward	11
Flybridge Seating facing Port	11
Flybridge Seating facing Starboard	12
Flybridge facing Forward/Starboard	12
Helm	12
Tender and Davit	12
Starboard Walkway to Bow	12
Flybridge Stairs to Cockpit	12
Bow facing Forward	13
Bow Seating	13
Bow Facing Aft	13
Crew Quarters facing Port	13
Crew Quarters Berth	13
Washer & Dryer Crew Quarters	13
Crew Head	14
Lazarette	14
Engine Room	14
Engine Room facing Starboard	14
Engine Room facing Port	14

Engine Room facing Aft	14
Marlow Burgee	15
CONTACTS	16
Contact details	16
Telephones	16
Office hours	16
Address	16

SPECIFICATIONS

Overview

Since the introduction of the 58E Marlow Explorer at the Ft. Lauderdale International Boat Show of 2013, this popular model has been in high demand. The classic lines, attention to detail, superb craftsmanship, and overall beauty of the Marlow Explorer make this yacht one of the most sought-after vessels in its class. "Katie Marie" is a well-built versatile 58E Semi-enclosed Bridge (with upgraded hard side windows) that provides the ability to cruise in the shallow waters of the Bahamas just as easily as she can provide the comforts of home during extended trips. The safety, performance, and sea-going ability that has propelled Marlow Yachts to the top of the yachting industry truly shines in "Katie Marie".

Note: New Batteries 2020

Engine Hours 1700

Basic Information

Category: Motor Yacht

Model Year: 2016

Year Built: 2016

Country: United States

Dimensions

LOA: 67' 8" (20.62mm)

LWL: 54' 4" (16.56mm)

LOD: 97' 8" (29.77mm)

Beam: 18.5

Max Draft: 4' 10" (1.47mm)

Speed, Capacities and Weight

Cruise Speed: 22 Knots Kts. (25 MPH) **Max Speed:** 26 Knots Kts. (30 MPH)

Water Capacity: 300 Gallons

Holding Tank: 125 Gal Gallons

Fuel Capacity: 1500 Gal Gallons

Accommodations

Total Cabins: 3

Total Heads: 3

Hull and Deck Information

Hull Material: Carbon Composite

Hull Color: Flag Blue

Engine Information

Engines: 2

Manufacturer: Caterpillar

Engine Type: Inboard

Fuel Type: Diesel

PHOTOS

Aft Portside View



Aft Starboard View



Aft



Portside View



Aft Deck facing Starboard



Cockpit facing Forward



Salon Entry facing Forward



Salon Facing Starboard



Salon facing Starboard Aft



Galley with Seating



Galley facing Starboard



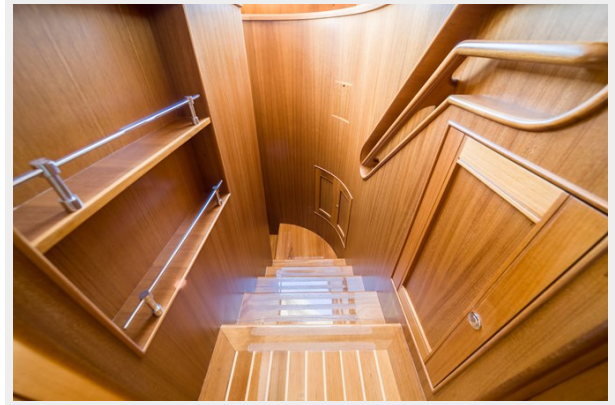
Galley



Dining facing Forward



Stairs leading to Staterooms



Companioway facing Aft



Master Stateroom facing Aft



Master facing Starboard



Master facing forward Port/Forward



Master Head



Companionway facing Forward



VIP Stateroom



VIP facing Port



VIP Head



Port Guest Stateroom



Cockpit facing Aft



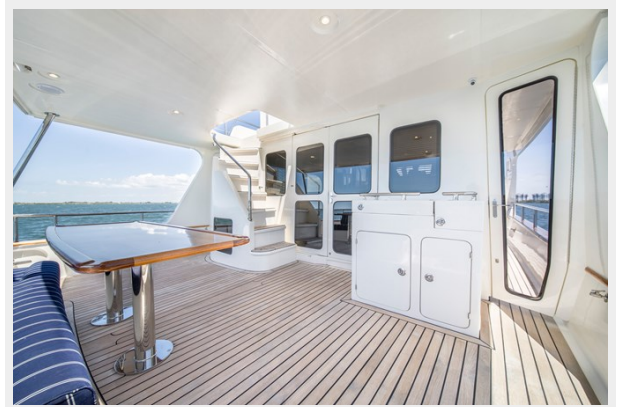
Cockpit facing Port



Cockpit Grill & Docking Station



Cockpit Stairs to Flybridge



Flybridge Seating facing Forward



Flybridge Seating facing Port



Flybridge Seating facing Starboard



Flybridge facing Forward/Starboard



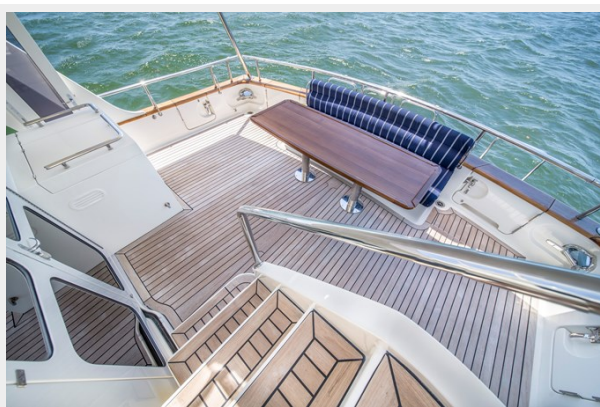
Helm



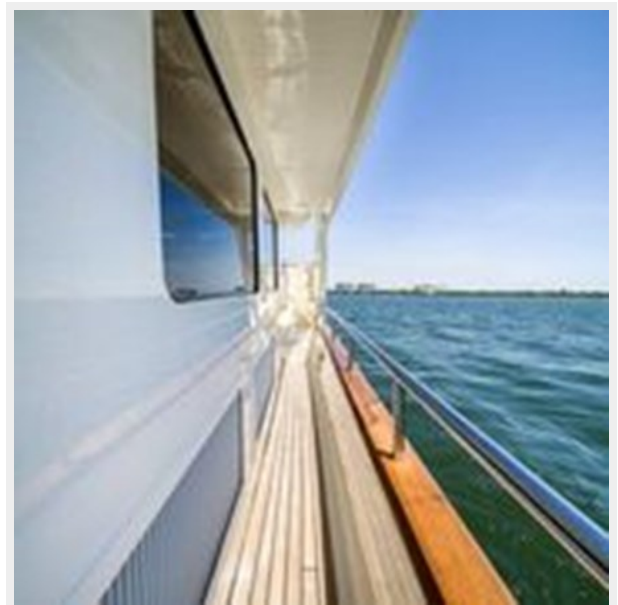
Tender and Davit



Flybridge Stairs to Cockpit



Starboard Walkway to Bow



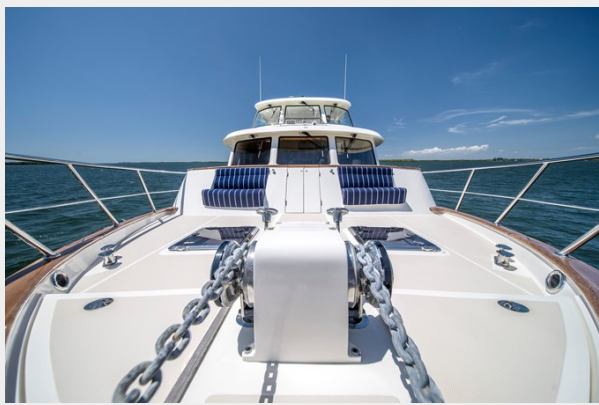
Bow facing Forward



Bow Seating



Bow Facing Aft



Crew Quarters facing Port



Crew Quarters Berth



Washer & Dryer Crew Quarters



Crew Head



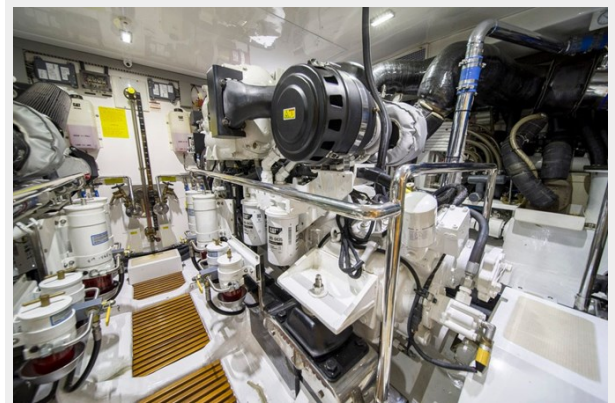
Lazarette



Engine Room



Engine Room facing Starboard



Engine Room facing Port



Engine Room facing Aft



Marlow Burgee



CONTACTS

Andrey Shestakov, leading yacht broker of the sales department of Shestakov Yacht Sales Inc. Shestakov Yacht Sales Inc., the official representative of the Miami/Fort Lauderdale FL headquarters.

Contact details

Email: **andrey@shestakovyachtsales.com**

Web: shestakovyachtsales.com/en/

Telephones

USA: **+1(954)274-4435**

Office hours

Monday – Saturday: **9:00 - 21:00** EDT

Sunday: **closed**

Address



Harbour Towne Marina, 850 NE 3rd St, STE 213, Dania, FL 33004