

VENERA — VAN DER VALK



Builder: VAN DER VALK

Year Built: 2020

Model: Motor Yacht

Price: PRICE ON APPLICATION

Location: United States

LOA: 93' 7" (28.5mm)

Beam: 23.62

Max Draft: 5' 11" (1.8mm)

Cruise Speed: 10 Knots Kts. (12 MPH)

Max Speed: 20 Knots Kts. (23 MPH)

Our experienced yacht broker, Andrey Shestakov, will help you choose and buy a yacht that best suits your needs **VENERA — VAN DER VALK** from our catalogue. Presently, at Shestakov Yacht Sales Inc., we have a wide variety of yachts available on our sale's list. We also work in close contact with all the big yacht manufacturers from all over the world.

If you would like to buy a yacht **VENERA — VAN DER VALK** or would like help answering any questions concerning purchasing, selling or chartering a yacht, please call **+1(954)274-4435**

TABLE OF CONTENTS

TABLE OF CONTENTS	2
SPECIFICATIONS	4
Overview	4
Basic Information	5
Dimensions	5
Speed, Capacities and Weight	5
Accommodations	5
Hull and Deck Information	6
Engine Information	6
PHOTOS	7
VanderValkShipyard_Venerea_image_header-2048x1152	7
Naamloos-4-1-2048x1152	7
6053d02_0629A	7
Naamloos-27	7
Naamloos-32-2048x1152	7
Naamloos-33-1	7
Naamloos-34	8
Naamloos-35	8
6053d01_0212	8
Naamloos-36	8
6053d01_0531	8
Naamloos-37	8
Naamloos-38	9
Naamloos-40	9
6053d01_0338	9
Naamloos-41	9
6053d02_0591	9
Naamloos-42	9

Naamloos-44	10
Naamloos-45	10
GA_ExplorerRPH_0002_Laag-1-1920x1080-1	10
Naamloos-43	10
GA_ExplorerRPH_0002_Laag-2-1920x1080-1	10
GA_ExplorerRPH_0002_Laag-3-1920x1080-1	10
GA_ExplorerRPH_0002_Laag-4-1920x1080-1	11
CONTACTS	12
Contact details	12
Telephones	12
Office hours	12
Address	12

SPECIFICATIONS

Overview

EXPLORE VENERA WORLDThe luxury motor yacht VENERA is 28.5m (93'5") explorer built by Dutch shipyard Van der Valk in 2020. Her launchShe was designed inside and out by Guido de Groot Design, with naval architecture by Ginton Naval Architects and an engineering platform by Diana Yacht Design. The yacht features a LOA 28.50m (93'6") 9,6 beam of 7.2m (23'6") and a draft of 1.8m (5'9"). Accommodation onboard is offered for up to 10 guests in 5 cabins. This yacht is built with accordance to RINA standards.

IMPORTANT FEATURES OF VENERA: Jacuzzi (4 ppl), Stabilisers underway and at anchor, Tender crane, Wi-fi, Air conditioning.

EXTERIOR

The sundeck features plenty of room for guests to relax and dine alfresco. There is a large dining table on the port side, an L-shaped settee, and a bar. The flybridge does not include a helm station to offer even more space for entertainment and socializing. The main deck aft features Jacuzzi and sun pads, which can be covered by a removable hardtop. A variety of water toys, including Jet ski, can be stored onboard and launched with a davit crane with a lifting capacity of 800kg.

INTERIORThe interior boasts a loft-style decor. On the main deck, the salon is separated into two areas: formal dining space and lounge. Offering exceptional volume for a 28-metre yacht, all luxury living spaces are on the same level. A direct entrance from the saloon to the beach club opens up a world of al fresco fun as well as access to a large sauna area with two cool windows offering views to match. The interior style has an industrial flavour with exposed structural components, rugged design elements and a colour scheme that blends over from the exterior.Venera is a testimony to the attractions of the sturdy raised pilothouse trawler look, offering a no-nonsense, practical platform for the owners and their family to enjoy new adventures. Powered by twin MAN V12 1650 hp engines, she is fitted with zero-speed gyroscopic stabilisers for optimal comfort

POWERThe power comes from two 1650hp MAN V12 diesel engines, which provide a top speed of 20 knots and a cruising speed of 17 knots.**ACCOMODATION**

Accommodation is provided for up to 10 guests in 5 cabins: master suite, two VIP cabins and two twin cabins.

Basic Information

Category: Motor Yacht

Sub Category: Pilothouse

Model Year: 2020

Year Built: 2020

Country: United States

Dimensions

LOA: 93' 7" (28.5mm)

LWL: 88' 4" (26.9mm)

Beam: 23.62

Max Draft: 5' 11" (1.8mm)

Speed, Capacities and Weight

Cruise Speed: 10 Knots Kts. (12 MPH)

Cruise Speed Range: 2400

Max Speed: 20 Knots Kts. (23 MPH)

Max Speed Range: 600 Kts.

Gross Tonnage: 210 Pounds

Water Capacity: 5000 Gallons

Holding Tank: 1188.77 Gal Gallons

Fuel Capacity: 5811.79 Gal Gallons

Fuel Consumption: 15.85 Gal Gallons

Accommodations

Total Cabins: 5

Total Berths: 7

Sleeps: 10

Total Heads: 6

Crew Cabin: 4

Crew Berths: 4

Crew Heads: 2

Hull and Deck Information

Hull Material: Aluminum

Deck Material: Teak

Hull Configuration: Round Bilged
Displacement

Hull Color: white

Exterior Designer: Guido de Groot

Interior Designer: Guido de Groot

Engine Information

Engines: 2

Manufacturer: MAN

Engine Type: Inboard

Fuel Type: Diesel

PHOTOS

Naamloos-4-1-2048x1152



VanderValkShipyard_Venerea_image_header-2048x1152



Naamloos-27



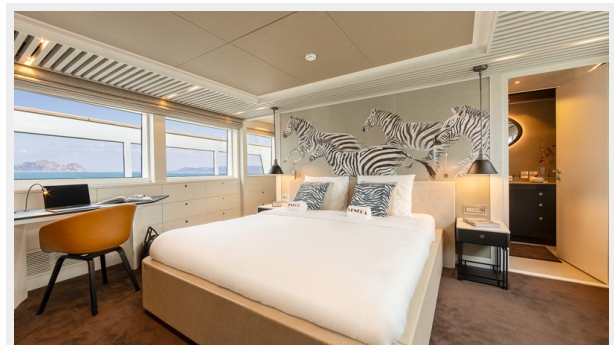
6053d02_0629A



Naamloos-32-2048x1152



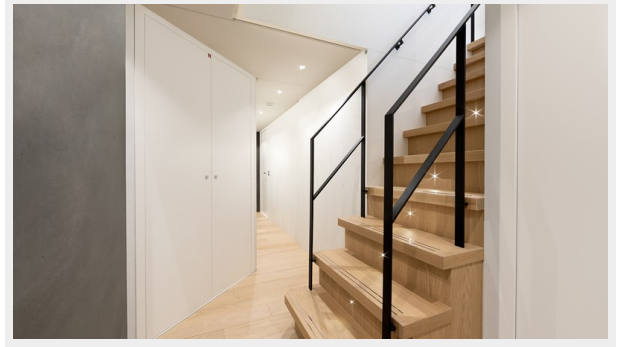
Naamloos-33-1



Naamloos-34



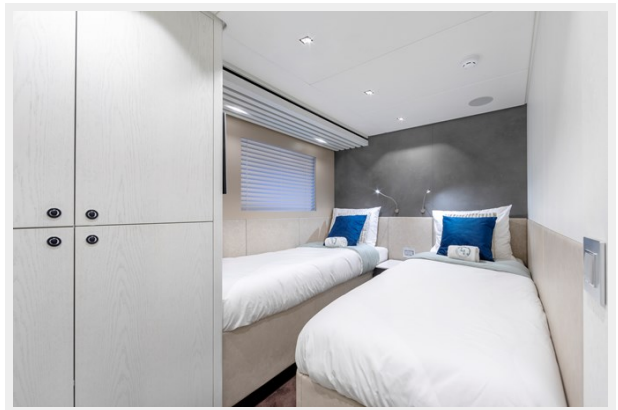
Naamloos-35



Naamloos-36



6053d01_0212



Naamloos-37



6053d01_0531



Naamloos-38



Naamloos-40



6053d01_0338



Naamloos-41



Naamloos-42



6053d02_0591



Naamloos-44



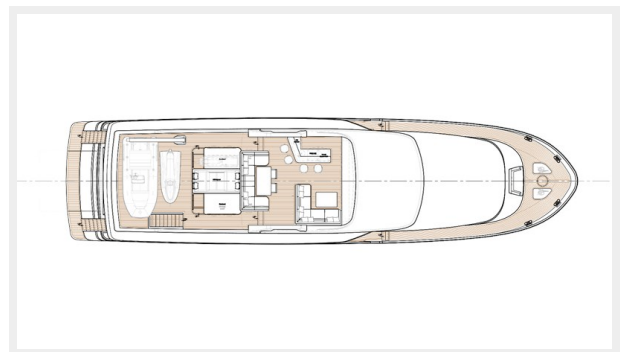
Naamloos-45



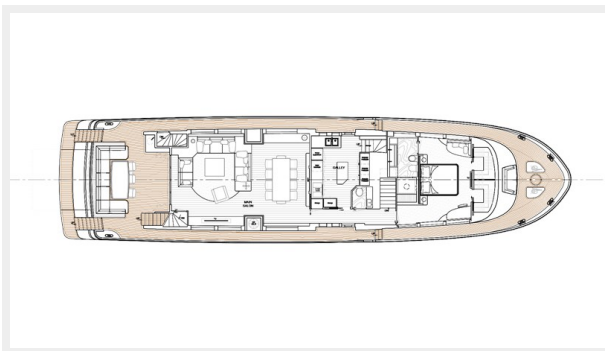
Naamloos-43



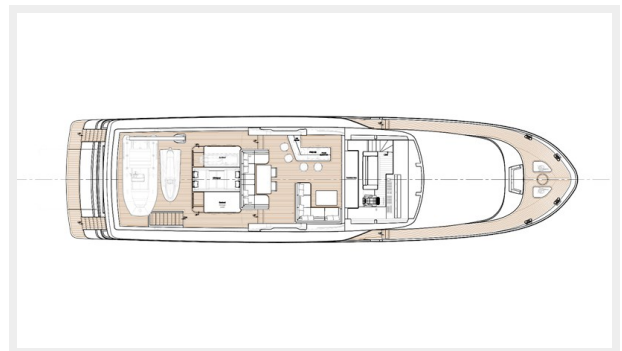
GA_ExplorerRPH_0002_Laag-1-1920x1080-1



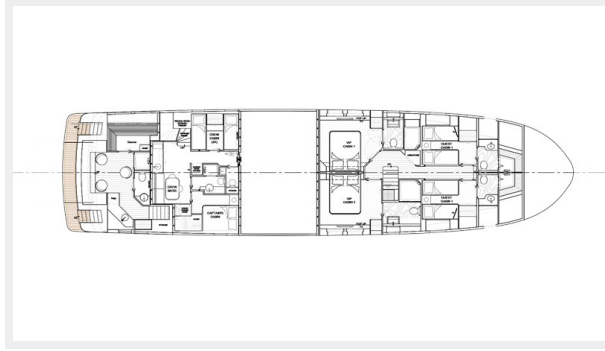
GA_ExplorerRPH_0002_Laag-2-1920x1080-1



GA_ExplorerRPH_0002_Laag-3-1920x1080-1



GA_ExplorerRPH_0002_Laag-4-1920x1080-1



CONTACTS

Andrey Shestakov, leading yacht broker of the sales department of Shestakov Yacht Sales Inc. Shestakov Yacht Sales Inc., the official representative of the Miami/Fort Lauderdale FL headquarters.

Contact details

Email: andrey@shestakovyachtsales.com

Web: shestakovyachtsales.com/en/

Telephones

USA: +1(954)274-4435

Office hours

Monday – Saturday: **9:00 - 21:00** EDT

Sunday: **closed**

Address



Harbour Towne Marina, 850 NE 3rd St,
STE 213, Dania, FL 33004