

ARIEL — NEPTUNUS



Builder: NEPTUNUS

Year Built: 2006

Model: Motor Yacht

Price: PRICE ON APPLICATION

Location: United States

LOA: 62' (18.9mm)

Beam: 16.66

Min Draft: 5' 1" (1.55mm)

Max Draft: 5' 3" (1.6mm)

Cruise Speed: 25 Knots Kts. (29 MPH)

Max Speed: 30 Knots Kts. (35 MPH)

Our experienced yacht broker, Andrey Shestakov, will help you choose and buy a yacht that best suits your needs **ARIEL — NEPTUNUS** from our catalogue. Presently, at Shestakov Yacht Sales Inc., we have a wide variety of yachts available on our sale's list. We also work in close contact with all the big yacht manufacturers from all over the world.

If you would like to buy a yacht **ARIEL — NEPTUNUS** or would like help answering any questions concerning purchasing, selling or chartering a yacht, please call **+1(954)274-4435**

TABLE OF CONTENTS

TABLE OF CONTENTS	2
SPECIFICATIONS	5
Overview	5
Basic Information	5
Dimensions	5
Speed, Capacities and Weight	5
Accommodations	5
Hull and Deck Information	6
Engine Information	6
PHOTOS	7
Salon Looking Forward	7
Salon to Starboard	7
Salon Looking Aft	7
Galley	7
Galley with Upright Frigerator	7
Galley Looking Aft	7
Portside of Galley	8
Dining Area	8
Lower Helm	8
Lower Helm	8
Companionway Electrical Locker	8
Companionway to Below	8
Day Head	9
Master Looking Aft	9
Master	9
Master Head	9
Master Head	10
Master Head	10

Starboard Side Guest Cabin	10
VIP Looking Forward	10
Guest Head	11
Companionway Looking Aft	11
Bow	11
Windlass Detail	11
Bow	11
Bow Area	11
Bow From Bridge	12
Side Deck	12
Transom Area	12
Aft Deck	12
Aft Deck	12
Aft Deck	12
Starboard Transom Gate	13
Port Transom Gate	13
Aft Deck Table	13
Aft Deck Grill	13
Easy FB Stairs	13
FB Looking Forward	13
FB Bar	14
Aft FB Seating	14
FB Looking Aft	14
Helm Area	14
Helm	14
Companion Seat	14
Sun Deck Forward	15
Venturi Windscreen	15
FB Access Steps with Hatch	15

Crane Aft of FB Seating	15
Engine Room Entrance	15
Engine Room Looking Forward	15
Port Engine	16
Starboard Engine	16
CAT Generator	16
Crew Access	16
Pantograph Crew Door	16
Crew Cabin Looking to Port	16
Crew Cabin Looking to Starboard	17
Home Dock	17
Alternate Profile	17
Alternate Profile	17
Alternate Profile	17
Alternate Profile	17
Alternate Profile	18
Yard Visit October 21	18
Yard Visit October 21	18
Yard Visit October 21	18
Yard Visit October 21	18
Yard Visit October 21	18
Yard Visit October 21	19
CONTACTS	20
Contact details	20
Telephones	20
Office hours	20
Address	20

SPECIFICATIONS

Overview

ARIEL, 62' Neptunus FB Motor Yacht, has a three cabin layout plus crew, CAT C-18 power with 1500 hours, huge flybridge with sun lounge forward. Very customized at time of build. Neptunus is known for its sea-kindly dry ride with an excellent turn of speed. One owner. Seriously offered for sale.

Basic Information

Category: Motor Yacht

Sub Category: Flybridge

Model Year: 2007

Year Built: 2006

Country: United States

Dimensions

LOA: 62' (18.9mm)

Beam: 16.66

Min Draft: 5' 1" (1.55mm)

Max Draft: 5' 3" (1.6mm)

Speed, Capacities and Weight

Cruise Speed: 25 Knots Kts. (29 MPH)

Max Speed: 30 Knots Kts. (35 MPH)

Gross Tonnage: 34 Pounds

Water Capacity: 230 Gallons

Holding Tank: 130 Gal Gallons

Fuel Capacity: 1105 Gal Gallons

Accommodations

Total Cabins: 3

Sleeps: 6

Total Heads: 3

Hull and Deck Information

Hull Material: Fiberglass

Deck Material: Teak

Hull Configuration: Modified Deep Vee

Hull Designer: Tony Castro

Interior Designer: Neptunus Yachts

Engine Information

Engines: 2

Manufacturer: Caterpillar

Engine Type: Inboard

Fuel Type: Diesel

PHOTOS

Salon Looking Forward



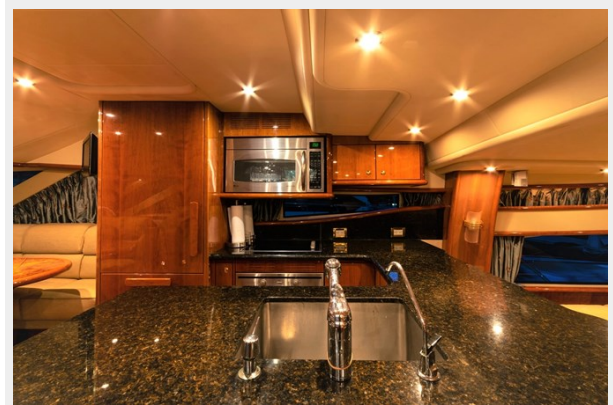
Salon to Starboard



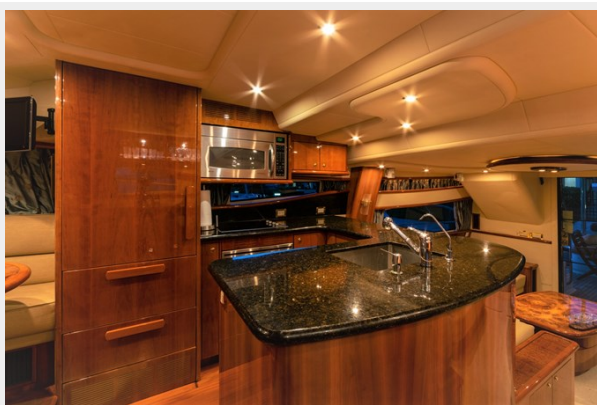
Salon Looking Aft



Galley



Galley with Upright Frigerator



Galley Looking Aft



Portside of Galley



Dining Area



Lower Helm



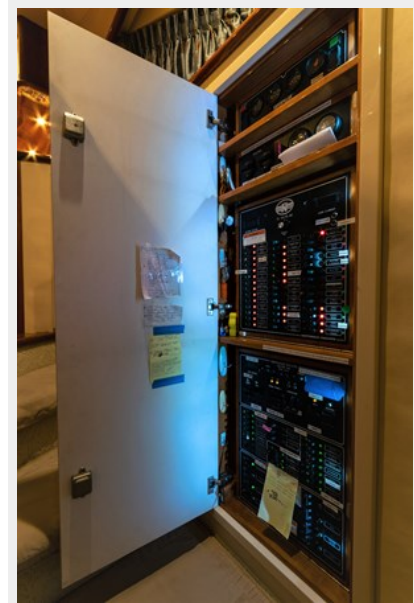
Lower Helm



Companionway to Below



Companionway Electrical Locker



Day Head



Master Looking Aft



Master



Master Head



Master Head



Master Head



Starboard Side Guest Cabin



VIP Looking Forward



Guest Head



Companionway Looking Aft



Bow



Windlass Detail



Bow



Bow Area



Bow From Bridge



Side Deck



Transom Area



Aft Deck



Aft Deck



Aft Deck



Starboard Transom Gate



Port Transom Gate



Aft Deck Table



Aft Deck Grill



Easy FB Stairs



FB Looking Forward



FB Bar



Aft FB Seating



FB Looking Aft



Helm Area



Helm



Companion Seat



Sun Deck Forward



Venturi Windscreen



Crane Aft of FB Seating



FB Access Steps with Hatch



Engine Room Entrance



Engine Room Looking Forward



Port Engine



Starboard Engine



CAT Generator



Crew Access



Pantograph Crew Door



Crew Cabin Looking to Port



Crew Cabin Looking to Starboard



Home Dock



Alternate Profile



Alternate Profile



Alternate Profile



Alternate Profile



Alternate Profile



Yard Visit October 21



Yard Visit October 21



Yard Visit October 21



Yard Visit October 21



Yard Visit October 21



Yard Visit October 21



CONTACTS

Andrey Shestakov, leading yacht broker of the sales department of Shestakov Yacht Sales Inc. Shestakov Yacht Sales Inc., the official representative of the Miami/Fort Lauderdale FL headquarters.

Contact details

Email: andrey@shestakovyachtsales.com

Web: shestakovyachtsales.com/en/

Telephones

USA: +1(954)274-4435

Office hours

Monday – Saturday: **9:00 - 21:00** EDT

Sunday: **closed**

Address



Harbour Towne Marina, 850 NE 3rd St,
STE 213, Dania, FL 33004