

## **LOUNGEITUDE — OUTER REEF YACHTS**



**Builder:** OUTER REEF YACHTS

**Year Built:** 2012

**Model:** Motor Yacht

**Price:** **PRICE ON APPLICATION**

**Location:** United States

**LOA:** 70' (21.34mm)

**Beam:** 18.5

**Max Draft:** 5' (1.52mm)

**Cruise Speed:** 10 Knots Kts. (12 MPH)

**Max Speed:** 15 Knots Kts. (17 MPH)

Our experienced yacht broker, Andrey Shestakov, will help you choose and buy a yacht that best suits your needs **Loungeitude — OUTER REEF YACHTS** from **our catalogue**. Presently, at **Shestakov Yacht Sales Inc.**, we have a wide variety of yachts available on **our sale's list**. We also work in close contact with all the big **yacht manufacturers** from all over the world.

If you would like to buy a yacht **Loungeitude — OUTER REEF YACHTS** or would like help answering any questions concerning purchasing, selling or chartering a yacht, please call **+1(954)274-4435**

# TABLE OF CONTENTS

TABLE OF CONTENTS	2
SPECIFICATIONS	4
Basic Information	4
Dimensions	4
Speed, Capacities and Weight	4
Accommodations	4
Hull and Deck Information	4
Engine Information	5
PHOTOS	6
Port	6
Bow	6
3rd Guest	6
Aft Deck	6
Aft Deck Forward	6
Salon Wide	6
Salon	7
Salon Wide	7
Salon Looking Aft	7
Galley Wide	7
Galley Starboard	7
Galley	7
Lower Helm Forward	7
Pilothouse	7
Steps to Lower	8
Master Wide	8
Master Forward	8
Master Head	8
VIP	8

---

VIP	8
Head	9
Utility Area	9
Crew Galley	9
Crew Stateroom	9
Upper Helm	9
Crew Head	9
Flybridge Forward	10
Flybridge	10
Yacht Controller	10
Flybridge Forward Looking Aft	10
Engine Room	10
CONTACTS	11
Contact details	11
Telephones	11
Office hours	11
Address	11

---

---

# SPECIFICATIONS

---

## Basic Information

---

**Category:** Motor Yacht

**Sub Category:** Pilothouse

**Model Year:** 2012

**Year Built:** 2012

**Country:** United States

## Dimensions

---

**LOA:** 70' (21.34mm)

**Beam:** 18.5

**Max Draft:** 5' (1.52mm)

## Speed, Capacities and Weight

---

**Cruise Speed:** 10 Knots Kts. (12 MPH) **Max Speed:** 15 Knots Kts. (17 MPH)

**Water Capacity:** 400 Gallons

**Holding Tank:** 200 Gal Gallons

**Fuel Capacity:** 2350 Gal Gallons

## Accommodations

---

**Total Cabins:** 4

**Total Heads:** 4

## Hull and Deck Information

---

**Hull Material:** Fiberglass

**Hull Configuration:** Semi-Displacement

---

## Engine Information

---

**Engines:** 2

**Manufacturer:** Caterpillar

**Engine Type:** Inboard

**Fuel Type:** Diesel

# PHOTOS

**Port**



**Bow**



**3rd Guest**



**Aft Deck**



**Aft Deck Forward**



**Salon Wide**



**Salon**



**Salon Wide**



**Salon Looking Aft**



**Galley Wide**



**Galley Starboard**



**Galley**



**Lower Helm Forward**



**Pilothouse**



### Steps to Lower



### Master Wide



### Master Forward



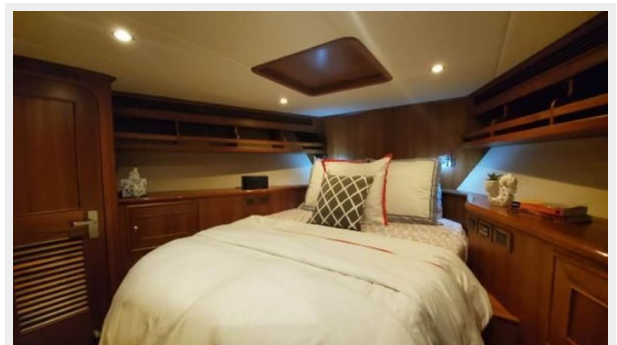
### Master Head



### VIP



### VIP





**Head**



**Utility Area**



**Crew Galley**



**Crew Stateroom**



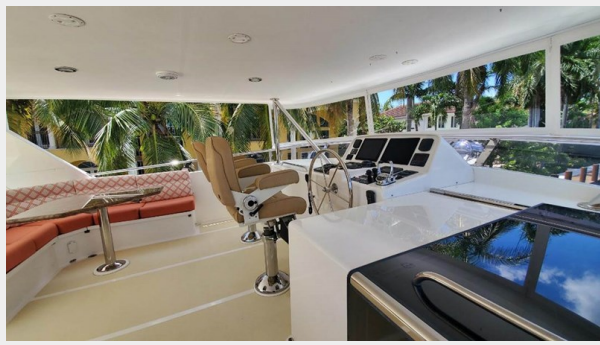
**Crew Head**



**Upper Helm**



**Flybridge Forward**



**Flybridge**



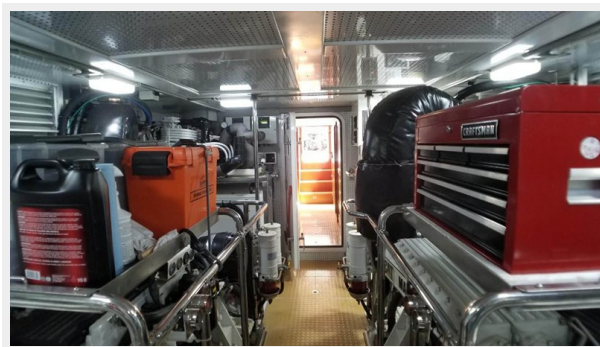
**Flybridge Forward Looking Aft**



**Yacht Controller**



**Engine Room**



# CONTACTS

---

Andrey Shestakov, leading yacht broker of the sales department of Shestakov Yacht Sales Inc. Shestakov Yacht Sales Inc., the official representative of the Miami/Fort Lauderdale FL headquarters.

## Contact details

---

Email: **andrey@shestakovyachtsales.com**

Web: [shestakovyachtsales.com/en/](https://shestakovyachtsales.com/en/)

## Telephones

---

USA: **+1(954)274-4435**

## Office hours

---

Monday – Saturday: **9:00 - 21:00** EDT

Sunday: **closed**

## Address

---



Harbour Towne Marina, 850 NE 3rd St, STE 213, Dania, FL 33004