

FL47 — CUSTOM



Builder: CUSTOM

Year Built: 2025

Model: Motor Yacht

Price: Price on Application

Location: Switzerland

LOA: 155' (47.22m)

Beam: 32.8

Max Draft: 9' 3" (2.8m)

Cruise Speed: 13 Knots Kts. (15 MPH)

Max Speed: 15 Knots Kts. (17 MPH)

Our experienced yacht broker, Andrey Shestakov, will help you choose and buy a yacht that best suits your needs **FL47 — CUSTOM** from our catalogue. Presently, at Shestakov Yacht Sales Inc., we have a wide variety of yachts available on our sale's list. We also work in close contact with all the big yacht manufacturers from all over the world.

If you would like to buy a yacht **FL47 — CUSTOM** or would like help answering any questions concerning purchasing, selling or chartering a yacht, please call **+1(954)274-4435**

TABLE OF CONTENTS

TABLE OF CONTENTS	2
SPECIFICATIONS	4
Overview	4
Basic Information	4
Dimensions	4
Speed, Capacities and Weight	4
Accommodations	5
Hull and Deck Information	5
Engine Information	5
PHOTOS	6
FL47_47__2023_Side view	6
FL47_47__2023_Side view	6
FL47_47__2023_Aft view	6
FL47_47__2023_Aerial	6
FL47_47__2023_Aerial	6
FL47_47__2023_Bow	6
FL47_47__2023_Balcony	7
FL47_47__2023_Balcony	7
FL47_47__2023_Stateroom	7
FL47_47__2023_Stateroom	7
FL47_47__2023_Dressing	7
FL47_47__2023_Stateroom	7
FL47_47__2023_Stateroom	7
FL47_47__2023_Stateroom	7
FL47_47__2023_Sundeck	8
FL47_47__2023_Aft view	8
FL47_47__2023_Pool	8
FL47_47__2023_Jacuzzi	8

FL47_47__2023_Aerial	8
FL47_47__2023_Side view	8
FL47_47__2023_Aft view	8
FL47_47__2023_Saloon	8
FL47_47__2023_Main Deck	9
FL47_47__2023_Main Deck	9
FL47_47__2023_Main Deck	9
FL47_47__2023_Beach club	9
FL47_47__2023_Beach club	9
FL47_47__2023_Beach club	9
FL47_47__2023_Gym	9
FL47_47__2023_upper saloon	9
FL47_47__2023_upper saloon	10
FL47_47__2023_upper saloon	10
FL47_47__2023_Aerial	10
FL47_47__2023_Stateroom	10
CONTACTS	11
Contact details	11
Telephones	11
Office hours	11
Address	11

SPECIFICATIONS

Overview

This displacement yacht, designed by Floating Life and Satura Studio, is able to accommodate up to 12 guests and the comfort of this vessel, allows its owner to navigate the world and spend long periods of time on board. This explorer has the opportunity, in the design phase, to be fully customised so that the team of experts and the client can go to define the perfect yacht that meets the clients expectations. The beauty of this project is that there are no limits for a vessel of this size; the large indoor and outdoor spaces guarantee a combination of both entertainment and privacy.

It has a maximum speed of 15 knots and the range at 10 knots is 5000 Nautical Miles.

Basic Information

Category: Motor Yacht

Model Year: 2025

Year Built: 2025

Country: Switzerland

Dimensions

LOA: 155' (47.22mm)

LWL: 147' 4" (44.9mm)

Beam: 32.8

Max Draft: 9' 3" (2.8mm)

Speed, Capacities and Weight

Cruise Speed: 13 Knots Kts. (15 MPH)

Cruise Speed Range: 5000

Max Speed: 15 Knots Kts. (17 MPH)

Gross Tonnage: 499 Pounds

Water Capacity: 20000 Gallons

Fuel Capacity: 26417.21 Gal Gallons

Accommodations

Total Cabins: 6

Sleeps: 12

Crew Cabin: 10

Hull and Deck Information

Hull Material: Steel

Hull Configuration: Full Displacement

Hull Designer: Floating Life - ZeroTredici
Naval Designer

Exterior Designer: Floating Life - Studio
Satura

Interior Designer: Floating Life - Studio
Satura

Engine Information

Engines: 2

Manufacturer: Caterpillar

Engine Type: Inboard

Fuel Type: Diesel

PHOTOS

FL47_47_2023_Side view



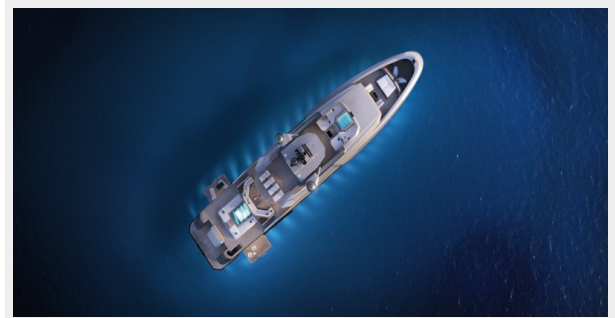
FL47_47_2023_Side view



FL47_47_2023_Aft view



FL47_47_2023_Aerial



FL47_47_2023_Aerial



FL47_47_2023_Bow



FL47_47_2023_Balcony



FL47_47_2023_Balcony



FL47_47_2023_Stateroom



FL47_47_2023_Stateroom



FL47_47_2023_Dressing



FL47_47_2023_Stateroom



FL47_47_2023_Stateroom



FL47_47_2023_Stateroom



FL47_47__2023_Aft view



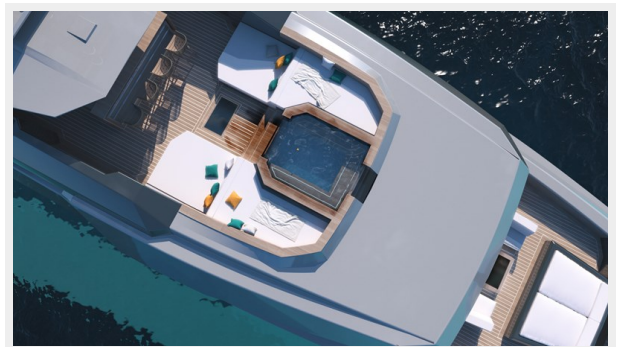
FL47_47__2023_Sundeck



FL47_47__2023_Pool



FL47_47__2023_Jacuzzi



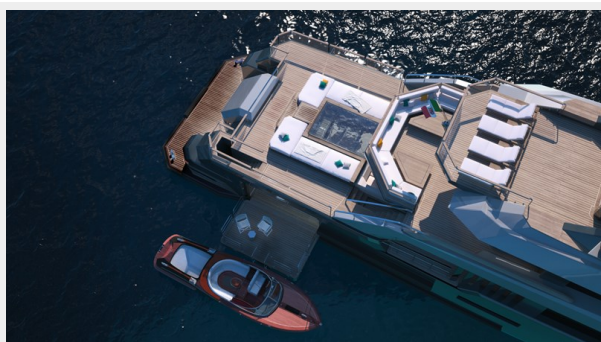
FL47_47__2023_Side view



FL47_47__2023_Aerial



FL47_47__2023_Aft view



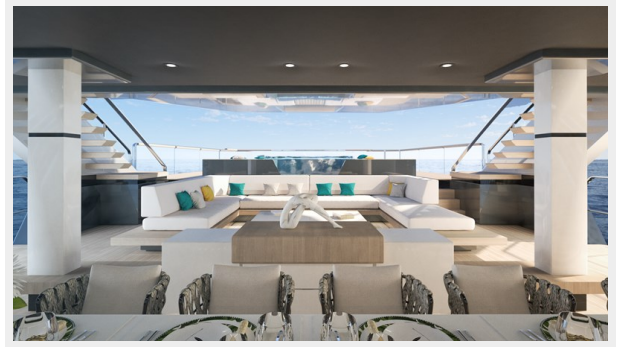
FL47_47__2023_Saloon



FL47_47__2023_Main Deck



FL47_47__2023_Main Deck



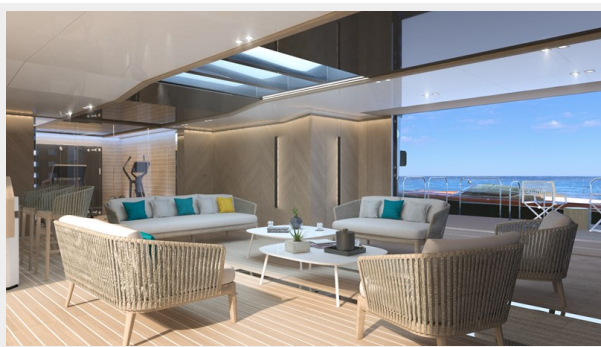
FL47_47__2023_Main Deck



FL47_47__2023_Beach club



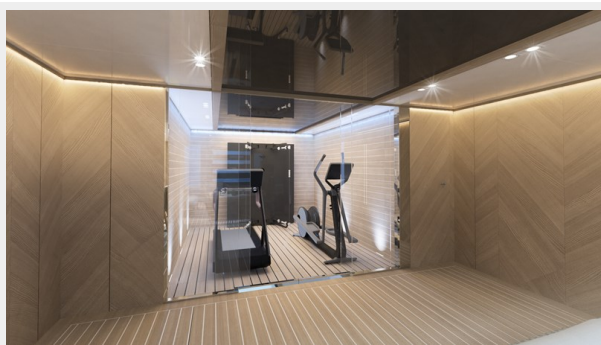
FL47_47__2023_Beach club



FL47_47__2023_Beach club



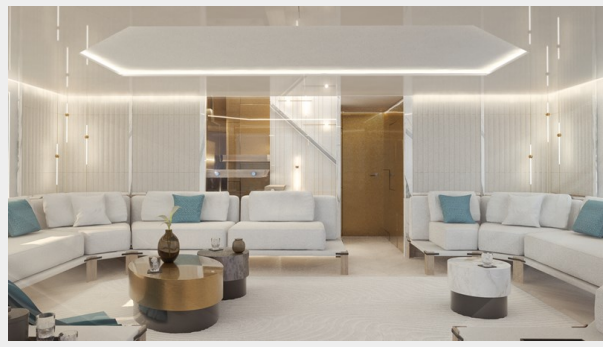
FL47_47__2023_Gym



FL47_47__2023_upper saloon



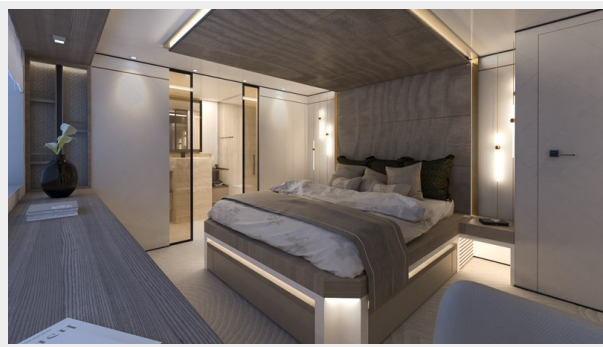
FL47_47__2023_upper saloon



FL47_47__2023_upper saloon



FL47_47__2023_Stateroom



FL47_47__2023_Aerial



CONTACTS

Andrey Shestakov, leading yacht broker of the sales department of Shestakov Yacht Sales Inc. Shestakov Yacht Sales Inc., the official representative of the Miami/Fort Lauderdale FL headquarters.

Contact details

Email: **andrey@shestakovyachtsales.com**

Web: shestakovyachtsales.com/en/

Telephones

USA: +1(954)274-4435

Office hours

Monday – Saturday: **9:00 - 21:00** EDT

Sunday: **closed**

Address



Harbour Towne Marina, 850 NE 3rd St,
STE 213, Dania, FL 33004