

SEA GODDESS — CHRIS-CRAFT



Builder: CHRIS-CRAFT

Year Built: 1956

Model: Motor Yacht

Price: PRICE ON APPLICATION

LOA: 54' (16.46mm)

Beam: 14.5

Max Draft: 4' (1.22mm)

Cruise Speed: 10 Knots Kts. (12 MPH)

Our experienced yacht broker, Andrey Shestakov, will help you choose and buy a yacht that best suits your needs **Sea Goddess — CHRIS-CRAFT** from **our catalogue**. Presently, at **Shestakov Yacht Sales Inc.**, we have a wide variety of yachts available on **our sale's list**. We also work in close contact with all the big **yacht manufacturers** from all over the world.

If you would like to buy a yacht **Sea Goddess — CHRIS-CRAFT** or would like help answering any questions concerning purchasing, selling or chartering a yacht, please call **+1(954)274-4435**

TABLE OF CONTENTS

TABLE OF CONTENTS	2
SPECIFICATIONS	5
Overview	5
Basic Information	5
Dimensions	5
Speed, Capacities and Weight	6
Accommodations	6
Hull and Deck Information	6
Engine Information	6
PHOTOS	7
1 Exterior Bow	7
001	7
002	7
003	7
2 Exterior Midships	7
3 Exterior Starboard	7
4 Exterior Bow	7
5 Exterior Midships	7
6 Exterior Stern	8
7 Exterior Stern	8
8 Forward Sundeck	8
9 Front Helm	8
11 Starboard Walkway	8
10 Front Deck	8
12 Port Walkway	9
13 Aft Sundeck	9
14 Aft Wet Bar	9
15 Helm	9

16 Helm	9
17 Wet Bar	9
18 Salon	10
19 Salon	10
20 Salon	10
21 Salon	10
22 Salon	10
23 Salon	10
24 Galley	10
25 Galley	10
26 Dinette	11
27 V Berth Bunk	11
29 V Berth Head	11
28 V Berth Bunk	11
30 Midships Bunks	11
31 Midships Bunks	11
32 Midships Head 1	12
33 Midships Head 2	12
34 Midships Shower	12
35 Aft Cabin	12
36 Aft Cabin	12
37 Aft Cabin	12
38 Engine Starboard	13
39 Engine Port	13
40 Generator	13
41 Generator	13
42 Charger	13
43 AC Heat	13
44 Water Heater	14

CONTACTS	15
Contact details	15
Telephones	15
Office hours	15
Address	15

SPECIFICATIONS

Overview

“Sea Goddess” is a 1956 Chris-Craft 54’ Constellation. 1956 was this model’s inaugural year for the top-of-the-line mahogany cruisers of her day. She is a classic motor yacht that is ready for her next owners to complete the restoration. She has mahogany throughout and on her hull. There has been a custom wet bar and countertop added aft of the helm. There are large forward and aft sun decks ready for the wind, sun, and its new owners to enjoy.

You can board “Sea Goddess” from the port or starboard side, midships. The aft and forward decks have plenty of room for entertaining with lots of open deck that includes free standing chairs, bar stools, and bench type seating on the stern. The salon is very spacious and has a sleeper couch to the port side. The down galley and dinette area have lots of room and the dinette can also be converted to an extra sleeping area as well. With a full-size refrigerator, she can hold plenty of food for your outings.

Forward area has a V-Berth state room with twin bunk beds and a head. The aft area has two more state rooms, the master aft cabin has a double berth and midships has twin bunk beds. The aft area also has two more heads with a shower in between them.

She moves along with twin 7.4L Mercruiser engines with 320 hp each and low hours. All your electrical needs are maintained with an 11 KW Westerbeke onboard generator.

Come take a look at this gem and see what she may have instore for you!

Basic Information

Category: Motor Yacht

Model Year: 1956

Year Built: 1956

Dimensions

LOA: 54' (16.46mm)

Beam: 14.5

Max Draft: 4' (1.22mm)

Speed, Capacities and Weight

Cruise Speed: 10 Knots Kts. (12 MPH) **Fuel Capacity:** 200 Gal Gallons

Accommodations

Total Cabins: 3

Total Heads: 3

Hull and Deck Information

Hull Material: Wood

Engine Information

Engines: 2

Manufacturer: Mercruiser

Engine Type: Inboard

Fuel Type: Gas/Petrol

PHOTOS

1 Exterior Bow



001



002



003



2 Exterior Midships



3 Exterior Starboard



4 Exterior Bow



5 Exterior Midships



6 Exterior Stern



7 Exterior Stern



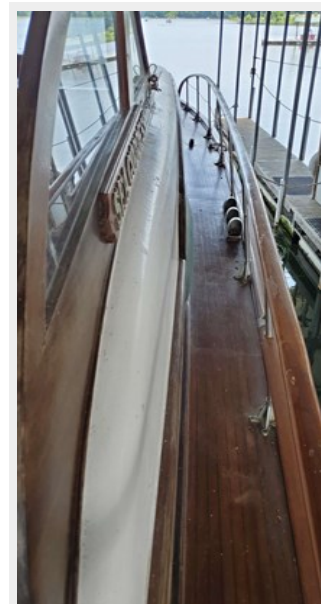
8 Forward Sundeck



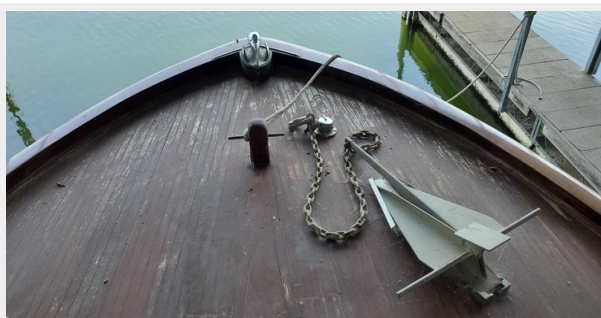
9 Front Helm



11 Starboard Walkway



10 Front Deck



12 Port Walkway



13 Aft Sundeck



14 Aft Wet Bar



15 Helm



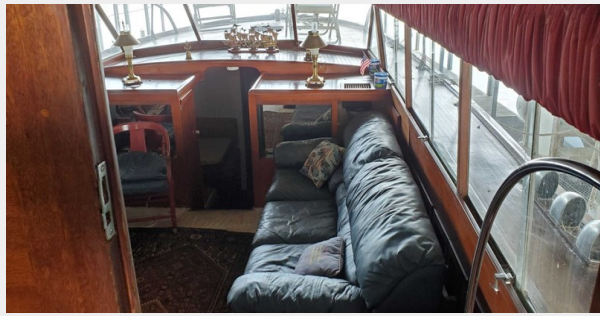
16 Helm



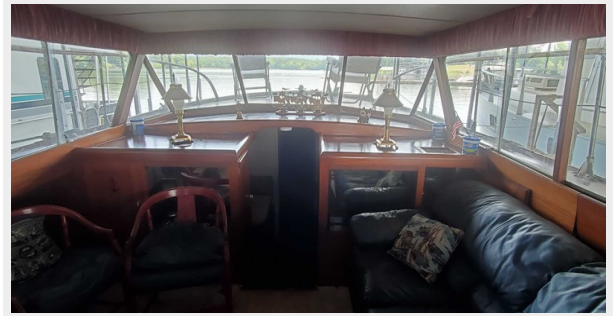
17 Wet Bar



18 Salon



19 Salon



20 Salon



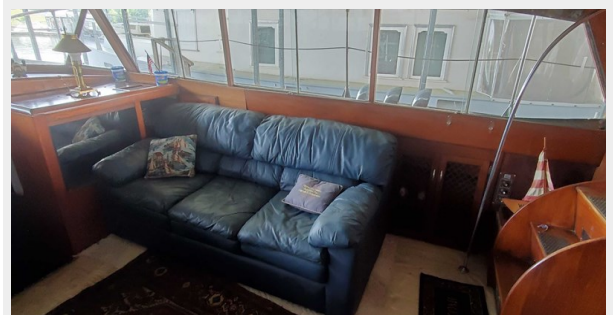
21 Salon



22 Salon



23 Salon



24 Galley



25 Galley



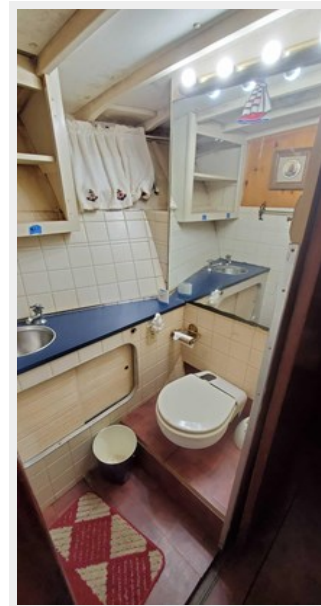
26 Dinette



27 V Berth Bunk



29 V Berth Head



28 V Berth Bunk



30 Midships Bunks



31 Midships Bunks



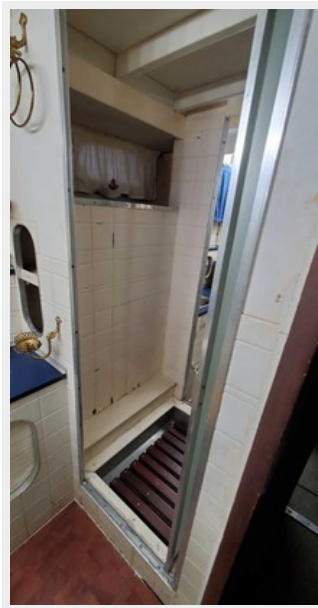
32 Midships Head 1



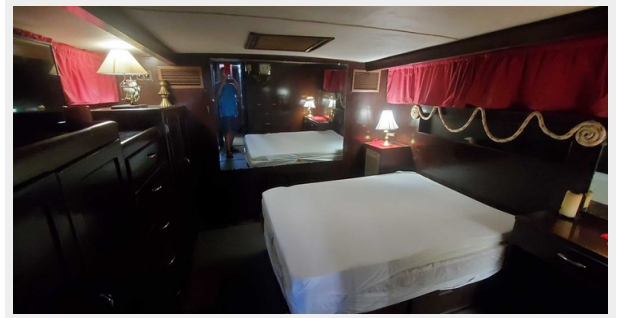
33 Midships Head 2



34 Midships Shower



35 Aft Cabin



36 Aft Cabin



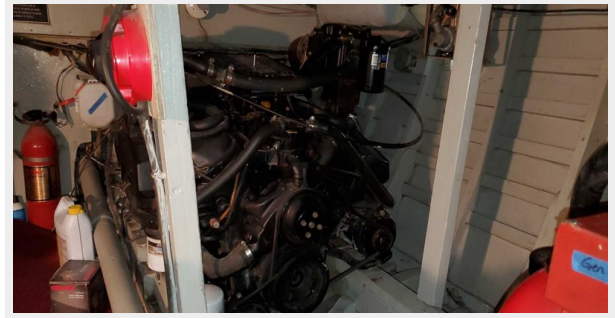
37 Aft Cabin



38 Engine Starboard



39 Engine Port



40 Generator



41 Generator



42 Charger



43 AC Heat



44 Water Heater



CONTACTS

Andrey Shestakov, leading yacht broker of the sales department of Shestakov Yacht Sales Inc. Shestakov Yacht Sales Inc., the official representative of the Miami/Fort Lauderdale FL headquarters.

Contact details

Email: **andrey@shestakovyachtsales.com**

Web: shestakovyachtsales.com/en/

Telephones

USA: **+1(954)274-4435**

Office hours

Monday – Saturday: **9:00 - 21:00** EDT

Sunday: **closed**

Address



Harbour Towne Marina, 850 NE 3rd St, STE 213, Dania, FL 33004