

## AMAZING GRACE — WASQUE



**Builder:** WASQUE

**LOA:** 26' (7.92mm)

**Year Built:** 1985

**Beam:** 8.5

**Model:** Cruising Yacht

**Min Draft:** 2' 3" (0.69mm)

**Price:** PRICE ON APPLICATION

**Location:** United States

Our experienced yacht broker, Andrey Shestakov, will help you choose and buy a yacht that best suits your needs **AMAZING GRACE — WASQUE** from our catalogue. Presently, at Shestakov Yacht Sales Inc., we have a wide variety of yachts available on our sale's list. We also work in close contact with all the big yacht manufacturers from all over the world.

If you would like to buy a yacht **AMAZING GRACE — WASQUE** or would like help answering any questions concerning purchasing, selling or chartering a yacht, please call **+1(954)274-4435**

# TABLE OF CONTENTS

---

TABLE OF CONTENTS	2
SPECIFICATIONS	4
Overview	4
Basic Information	4
Dimensions	4
Speed, Capacities and Weight	4
Accommodations	4
Hull and Deck Information	4
Engine Information	5
PHOTOS	6
Cockpit, Looking Fwd.	6
Cockpit, Stbd.	6
Cockpit and Table	6
Bimini	6
Helm	6
GPS	6
Interior Berth Fwd.	7
Berth	7
Berth	7
Head	7
Sink	7
Head Detail	7
Sink Detail	8
Interior, Looking Aft	8
Cockpit, Looking Aft	8
Stern	8
Amazing Stbd_Profile	8
Engine	8

---

Engine	9
CONTACTS	10
Contact details	10
Telephones	10
Office hours	10
Address	10

---

# SPECIFICATIONS

---

## Overview

---

Stunning lines, teaked-out to the nines! Recent bow thruster and one sweet running pocket yacht!

## Basic Information

---

**Category:** Cruising Yacht

**Model Year:** 1985

**Year Built:** 1985

**Refit Type:** Awlgrip, new swim platform, new soft goods, safety rails, rub rails, teak

**Country:** United States

## Dimensions

---

**LOA:** 26' (7.92mm)

**Beam:** 8.5

**Min Draft:** 2' 3" (0.69mm)

## Speed, Capacities and Weight

---

**Water Capacity:** 8 Gallons

**Holding Tank:** 9 Gal Gallons

**Fuel Capacity:** 72 Gal Gallons

## Accommodations

---

**Total Cabins:** 1

**Total Berths:** 2

**Sleeps:** 2

**Total Heads:** 1

## Hull and Deck Information

---

**Hull Material:** Fiberglass

**Deck Material:** Nonskid painted

---

## Engine Information

---

**Engines:** 1

**Manufacturer:** Isuzu

**Engine Type:** Inboard

**Fuel Type:** Diesel

# PHOTOS

**Cockpit, Looking Fwd.**



**Cockpit, Stbd.**



**Cockpit and Table**



**Bimini**



**Helm**



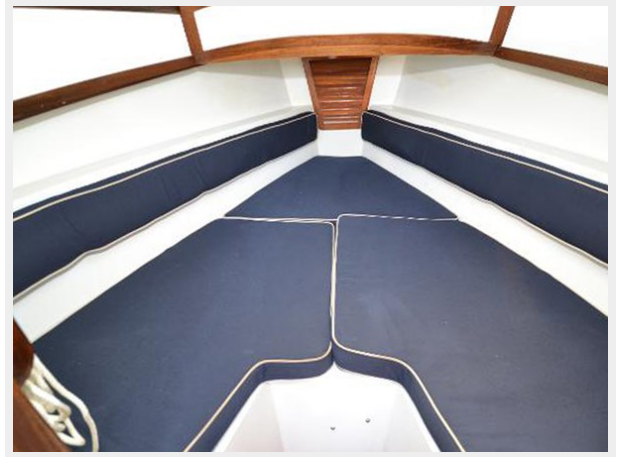
**GPS**



**Interior Berth Fwd.**



**Berth**



**Berth**



**Head**



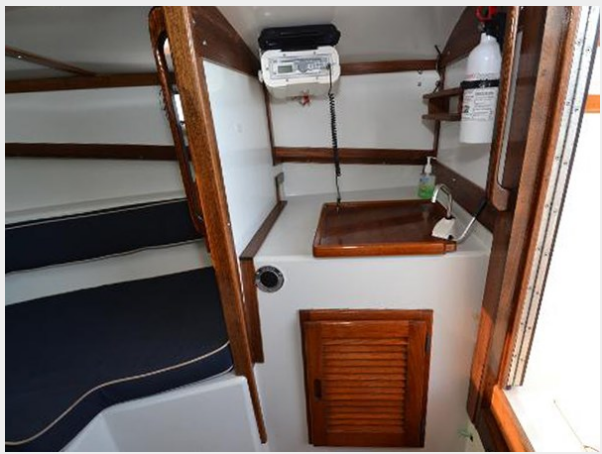
**Head Detail**



**Sink**



**Sink Detail**



**Interior, Looking Aft**



**Cockpit, Looking Aft**



**Stern**



**Amazing Stbd\_Profile**

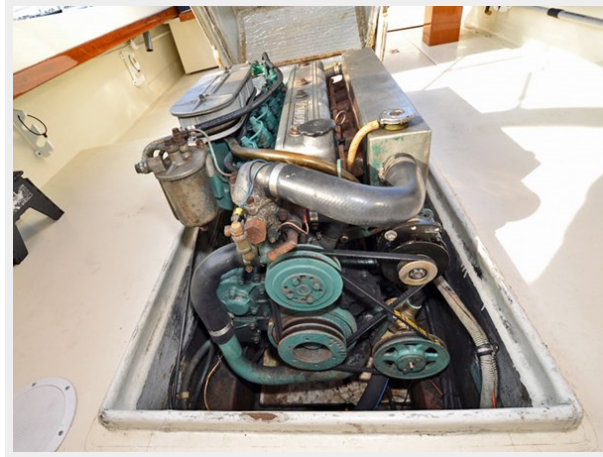


**Engine**





## Engine



# CONTACTS

---

Andrey Shestakov, leading yacht broker of the sales department of Shestakov Yacht Sales Inc. Shestakov Yacht Sales Inc., the official representative of the Miami/Fort Lauderdale FL headquarters.

## Contact details

---

Email: [andrey@shestakovyachtsales.com](mailto:andrey@shestakovyachtsales.com)

Web: [shestakovyachtsales.com/en/](http://shestakovyachtsales.com/en/)

## Telephones

---

USA: +1(954)274-4435

## Office hours

---

Monday – Saturday: **9:00 - 21:00** EDT

Sunday: **closed**

## Address

---



Harbour Towne Marina, 850 NE 3rd St,  
STE 213, Dania, FL 33004