

HONU — BREWER



Builder: BREWER

Year Built: 1989

Model: Center Cockpit

Price: PRICE ON APPLICATION

Location: United States

LOA: 44' (13.41mm)

Beam: 13.5

Max Draft: 5' 10" (1.78mm)

Our experienced yacht broker, Andrey Shestakov, will help you choose and buy a yacht that best suits your needs **Honu — BREWER** from our catalogue. Presently, at Shestakov Yacht Sales Inc., we have a wide variety of yachts available on our sale's list. We also work in close contact with all the big yacht manufacturers from all over the world.

If you would like to buy a yacht **Honu — BREWER** or would like help answering any questions concerning purchasing, selling or chartering a yacht, please call **+1(954)274-4435**

TABLE OF CONTENTS

TABLE OF CONTENTS	2
SPECIFICATIONS	6
Overview	6
Basic Information	6
Dimensions	6
Speed, Capacities and Weight	7
Accommodations	7
Hull and Deck Information	7
Engine Information	7
PHOTOS	8
002	8
001	8
003	8
3	8
004	8
005	8
10	9
11	9
12	9
13	9
14	9
15	9
17	10
16	10
18	10
19	10
20	11
21	11

23	11
22	11
24	12
25	12
26	12
27	12
30	12
28	12
31	13
32	13
33	13
34	13
35	13
36	13
38	14
37	14
39	14
42	14
43	14
44	14
45	15
46	15
47	15
48	15
50	15
51	15
52	16
53	16
54	16

56	16
58	16
57	16
60	17
61	17
63	17
62	17
64	18
65	18
71	18
70	18
72	19
73	19
74	19
75	19
76	19
77	19
81	20
80	20
82	20
83	20
84	21
90	21
91	21
92	21
94	22
95	22
97	22
96	22

98	23
99	23
100	23
101	23
103	24
102	24
104	24
105	24
106	24
107	24
108	25
CONTACTS	26
Contact details	26
Telephones	26
Office hours	26
Address	26

SPECIFICATIONS

Overview

Honu was built by Fort Meyers Yacht and Shipbuilding in 1989 and boasts a lineage of proven blue water cruisers. The Brewer 44' cutter rig sailboat is a semi-custom designed boat based on the popular Brewer 12.8 and Whitby 42. The added length to the original design created a roomier aft cabin, a modern looking transom and functional swim platform at the stern. The underbody was also modified for an improved windward performance. She is a wonderful offshore and all-weather boat.

This design offers a large center cockpit, big and easily accessed engine room, generous tankage and refrigeration/freezer systems and a spacious interior layout that affords excellent comfort and plenty of storage for both cruising and living aboard.

The interior of Honu is traditional in design with beautiful woodwork throughout. She has two staterooms and two heads. There is a walkthrough to the master stateroom aft with an additional companionway to the cockpit. The second stateroom and head is forward. The main saloon features a settee to starboard which is also a pullout single berth. To port is an L-shaped settee which also converts to a double berth and includes storage underneath. The drop leaf table with storage is located centerline and there are large storage lockers with a bookshelf located outboard of the settee. Aft to port is a U-shaped galley that is very well designed for offshore cruising. Opposite to starboard is the outboard facing navigation and communications station. A starboard walk-through passage affords access to the machinery/engine compartment located underneath the center cockpit. There is a navigation/work area with additional storage.

Basic Information

Category: Center Cockpit

Model Year: 1989

Year Built: 1989

Country: United States

Dimensions

LOA: 44' (13.41mm)

Beam: 13.5

Max Draft: 5' 10" (1.78mm)

Speed, Capacities and Weight

Water Capacity: 200 Gallons

Fuel Capacity: 107 Gal Gallons

Accommodations

Total Heads: 2

Hull and Deck Information

Hull Material: Fiberglass

Engine Information

Engines: 1

Manufacturer: Perkins

Engine Type: Inboard

Fuel Type: Diesel

PHOTOS

001



002



003



3



004



005



10



11



12



13



14



15



16



17



18



19



20



21



23



22



24



25



26



27



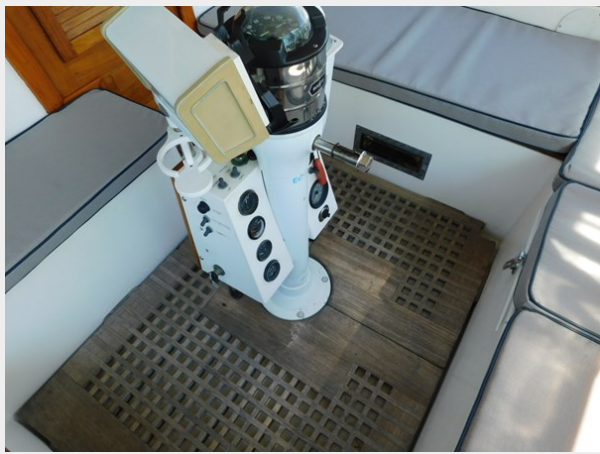
30



28



31



32



33



34



35



36



37



38



39



42



43



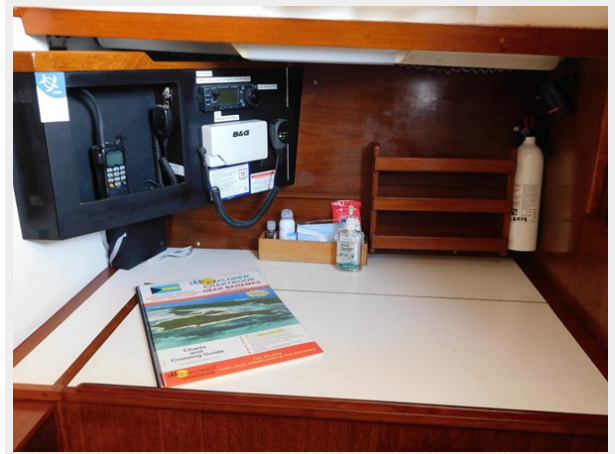
44



45



46



47



48



50



51



52



53



54



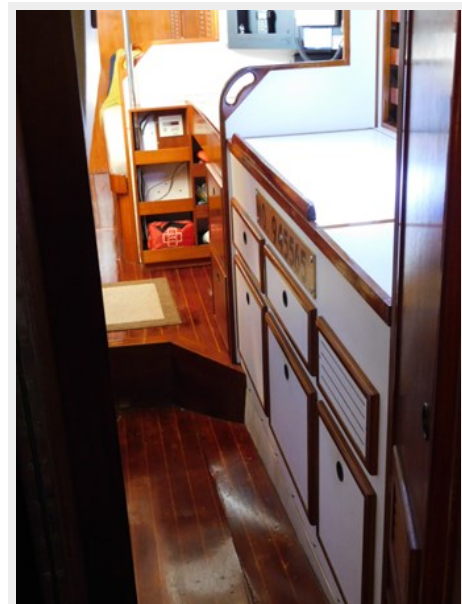
56



57



58



60



61



62



63



64



65



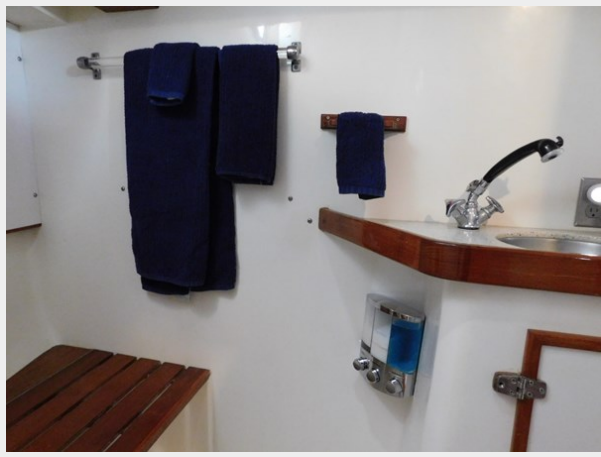
71



70



72



73



74



75



76



77



80



81



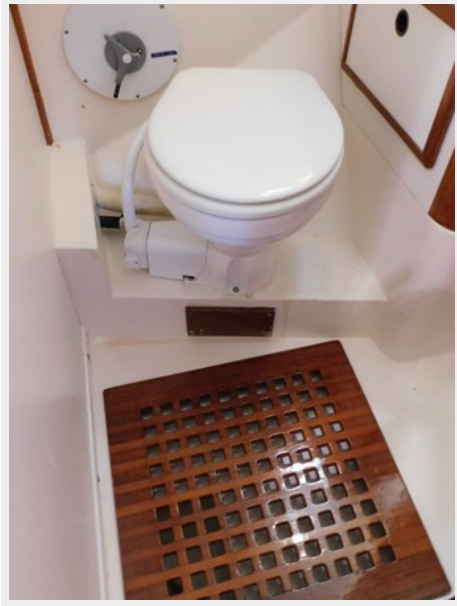
82



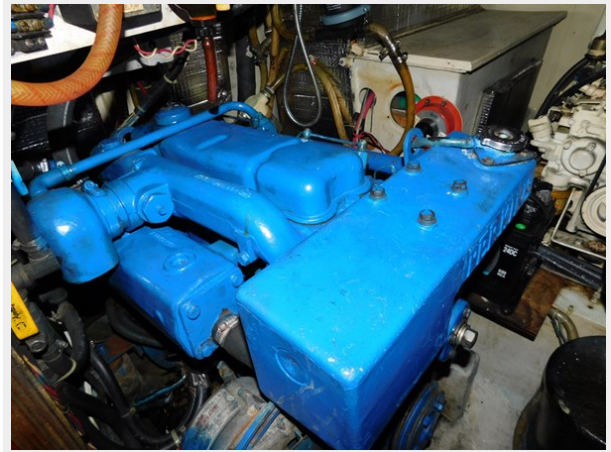
83



84



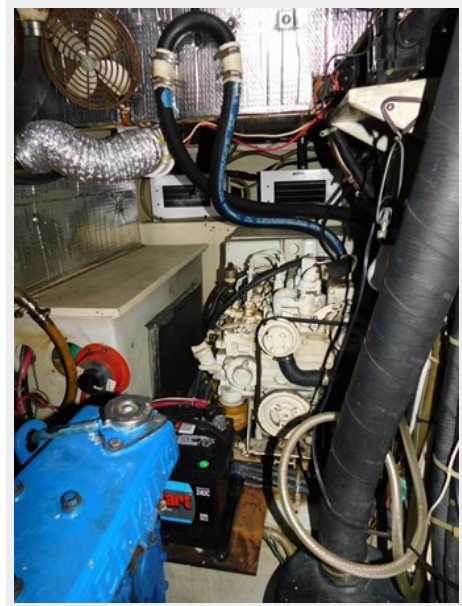
90



91



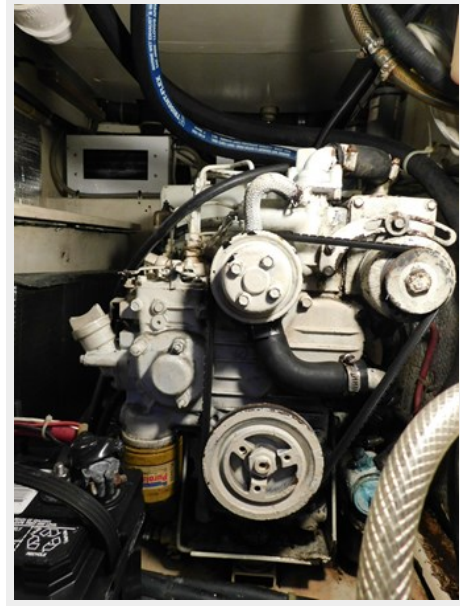
92



94



95



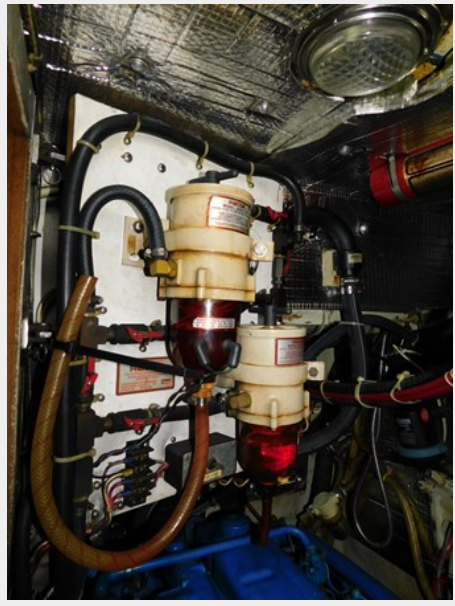
97



96



98



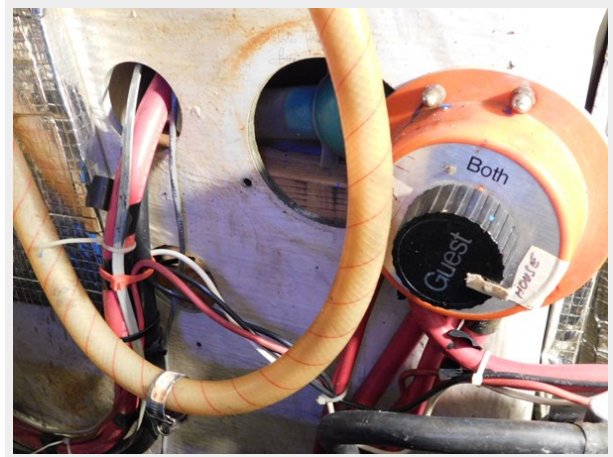
99



100



101



102



103



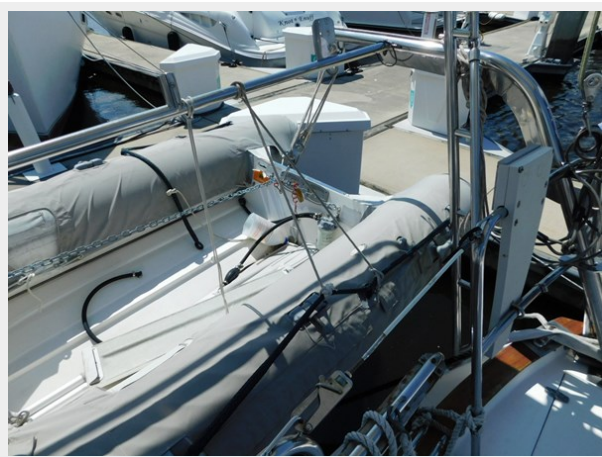
104



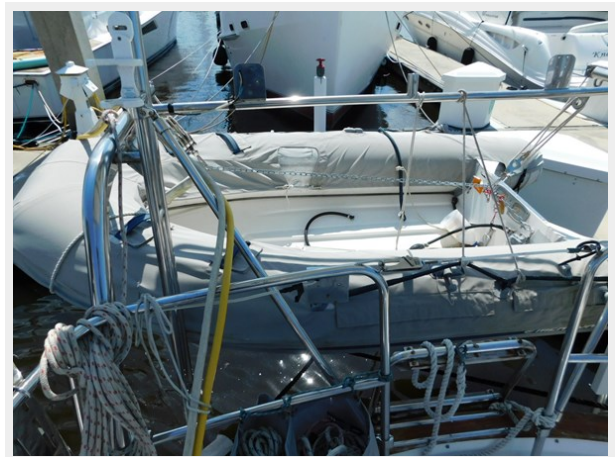
105



106



107



108



CONTACTS

Andrey Shestakov, leading yacht broker of the sales department of Shestakov Yacht Sales Inc. Shestakov Yacht Sales Inc., the official representative of the Miami/Fort Lauderdale FL headquarters.

Contact details

Email: andrey@shestakovyachtsales.com

Web: shestakovyachtsales.com/en/

Telephones

USA: +1(954)274-4435

Office hours

Monday – Saturday: **9:00 - 21:00** EDT

Sunday: **closed**

Address



Harbour Towne Marina, 850 NE 3rd St,
STE 213, Dania, FL 33004