

## 4 ROSES — OCEANFAST



**Builder:** OCEANFAST

**Year Built:** 2004

**Model:** Motor Yacht

**Price:** PRICE ON APPLICATION

**Location:** United States

**LOA:** 185' (56.39mm)

**Beam:** 33.83

**Max Draft:** 10' 6" (3.2mm)

**Cruise Speed:** 12 Knots Kts. (14 MPH)

**Max Speed:** 15 Knots Kts. (17 MPH)

Our experienced yacht broker, Andrey Shestakov, will help you choose and buy a yacht that best suits your needs **4 Roses — OCEANFAST** from our catalogue. Presently, at Shestakov Yacht Sales Inc., we have a wide variety of yachts available on our sale's list. We also work in close contact with all the big yacht manufacturers from all over the world.

If you would like to buy a yacht **4 Roses — OCEANFAST** or would like help answering any questions concerning purchasing, selling or chartering a yacht, please call **+1(954)274-4435**

# TABLE OF CONTENTS

---

TABLE OF CONTENTS	2
SPECIFICATIONS	3
Overview	3
Basic Information	3
Dimensions	3
Speed, Capacities and Weight	3
Accommodations	4
Hull and Deck Information	4
Engine Information	4
PHOTOS	5
CONTACTS	8
Contact details	8
Telephones	8
Office hours	8
Address	8

# SPECIFICATIONS

## Overview

4 Roses, with her at anchor stabilization, Bannenberg styling, sexy lines, separate gymnasium on the sun deck, plenty of toys, and a variety of outside entertaining areas is one of the most desirable yachts of this size and budget available today.

4 Roses was one of the last deliveries from Oceanfast and the legendary Jon Bannenberg. This is arguably the best Oceanfast ever built and the fit and finish of this steel hull and FRP superstructure yacht is exceptional. With the dark blue painted hull and Bannenberg styling, this is a yacht that definitely stops people when they notice her at the dock. The signature styling and contemporary interior has been masterfully executed by the Oceanfast design team, led by Craig Beale.

## Basic Information

**Category:** Motor Yacht

**Model Year:** 2004

**Year Built:** 2004

**Country:** United States

## Dimensions

**LOA:** 185' (56.39mm)

**Beam:** 33.83

**Max Draft:** 10' 6" (3.2mm)

## Speed, Capacities and Weight

**Cruise Speed:** 12 Knots Kts. (14 MPH)

**Cruise Speed Range:** 5000

**Max Speed:** 15 Knots Kts. (17 MPH)

**Gross Tonnage:** 917 Pounds

**Water Capacity:** 7176 Gallons

**Holding Tank:** 3963 Gal Gallons

**Fuel Capacity:** 34945 Gal Gallons

## Accommodations

---

**Total Cabins:** 6

**Sleeps:** 12

**Total Heads:** 7

**Crew Berths:** 14

## Hull and Deck Information

---

**Hull Material:** Steel

**Hull Configuration:** Full Displacement

**Hull Designer:** Austal Ships

**Exterior Designer:** Jon Bannenberg (UK) /  
Craig Beale (Australia)

**Interior Designer:** Sam Sorgiovanni  
(Australia)

## Engine Information

---

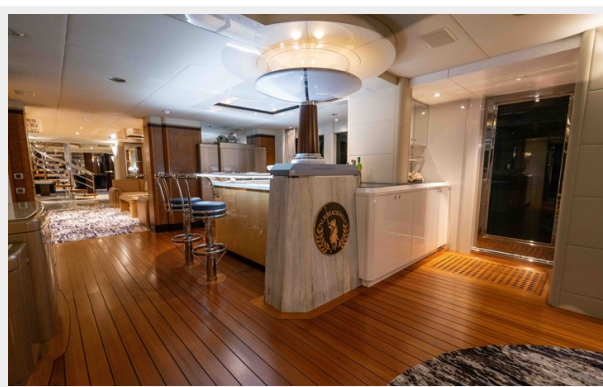
**Engines:** 2

**Manufacturer:** Caterpillar

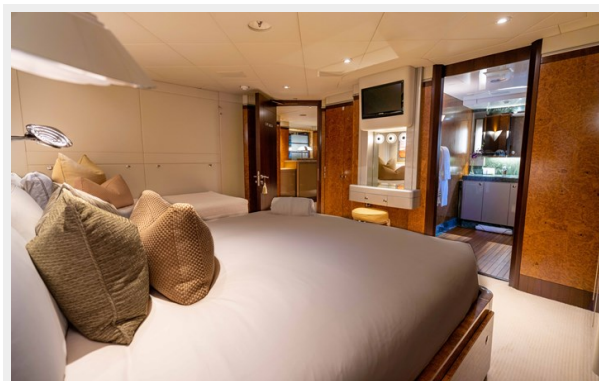
**Engine Type:** Inboard

**Fuel Type:** Diesel

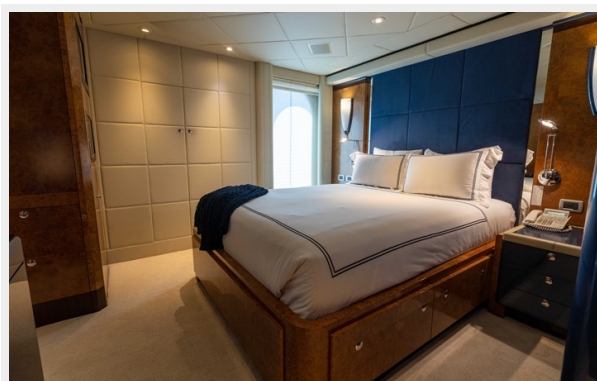
# PHOTOS











# CONTACTS

---

Andrey Shestakov, leading yacht broker of the sales department of Shestakov Yacht Sales Inc. Shestakov Yacht Sales Inc., the official representative of the Miami/Fort Lauderdale FL headquarters.

## Contact details

---

Email: **andrey@shestakovyachtsales.com**

Web: [shestakovyachtsales.com/en/](http://shestakovyachtsales.com/en/)

## Telephones

---

USA: **+1(954)274-4435**

## Office hours

---

Monday – Saturday: **9:00 - 21:00 EDT**

Sunday: **closed**

## Address

---



Harbour Towne Marina, 850 NE 3rd St,  
STE 213, Dania, FL 33004