

BOSTON WHALER 420 OUTRAGE — BOSTON WHALER



Builder: BOSTON WHALER

Year Built: 2018

Model: Motor Yacht

Price: PRICE ON APPLICATION

Location: United States

LOA: 42' 5" (12.93mm)

Beam: 13

Max Draft: 15' 6" (4.72mm)

Our experienced yacht broker, Andrey Shestakov, will help you choose and buy a yacht that best suits your needs **Boston Whaler 420 Outrage — BOSTON WHALER** from **our catalogue**. Presently, at **Shestakov Yacht Sales Inc.**, we have a wide variety of yachts available on **our sale's list**. We also work in close contact with all the big **yacht manufacturers** from all over the world.

If you would like to buy a yacht **Boston Whaler 420 Outrage — BOSTON WHALER** or would like help answering any questions concerning purchasing, selling or chartering a yacht, please call **+1(954)274-4435**

TABLE OF CONTENTS

TABLE OF CONTENTS	2
SPECIFICATIONS	3
Overview	3
Basic Information	3
Dimensions	3
Speed, Capacities and Weight	3
Accommodations	4
Hull and Deck Information	4
Engine Information	4
PHOTOS	5
CONTACTS	10
Contact details	10
Telephones	10
Office hours	10
Address	10

SPECIFICATIONS

Overview

Huge comfort, legendary capability and unmatched state-of-the-art features make the flagship 420 Outrage® a boat like no other. From the expansive bow with innovative seating galore, to the beautifully designed convertible helm and cockpit areas, to the gracious, well-equipped cabin with enclosed head, the 420 is a champion at onboard entertaining and pleasure cruising, whether close to home or way offshore. With so many inviting spaces to settle in for the day, this is the yacht you'll want to enjoy with family and friends.

A MUST SEE! Fully loaded with every bell and whistle and available just in time for Summer! Book a showing today!

- QUAD 350 HP Mercury Verados with Joystick Control
- Low Hours!
- Captain Maintained!
- Warranty until 2022

Basic Information

Category: Motor Yacht

Model Year: 2018

Year Built: 2018

Country: United States

Dimensions

LOA: 42' 5" (12.93mm)

Beam: 13

Max Draft: 15' 6" (4.72mm)

Speed, Capacities and Weight

Water Capacity: 60 Gallons

Holding Tank: 20 Gal Gallons

Fuel Capacity: 300 Gal Gallons

Accommodations

Total Cabins: 1

Total Heads: 1

Hull and Deck Information

Hull Material: Fiberglass

Engine Information

Engines: 4

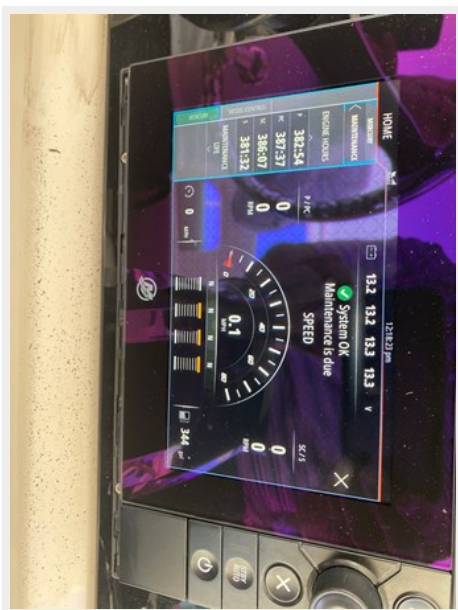
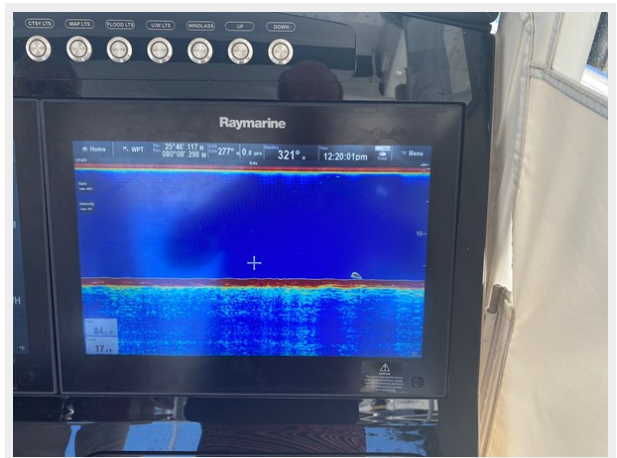
Manufacturer: Mercury

Engine Type: Outboard

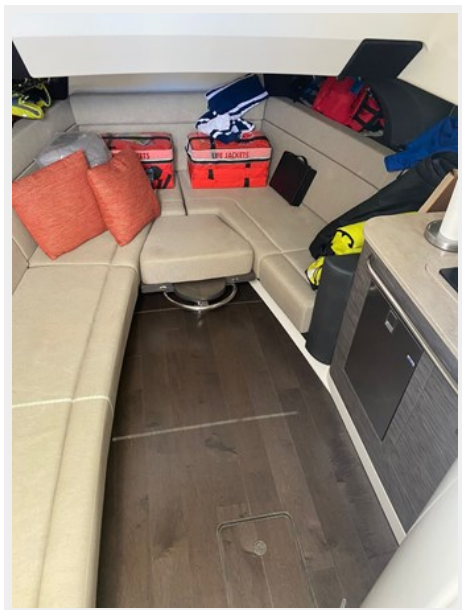
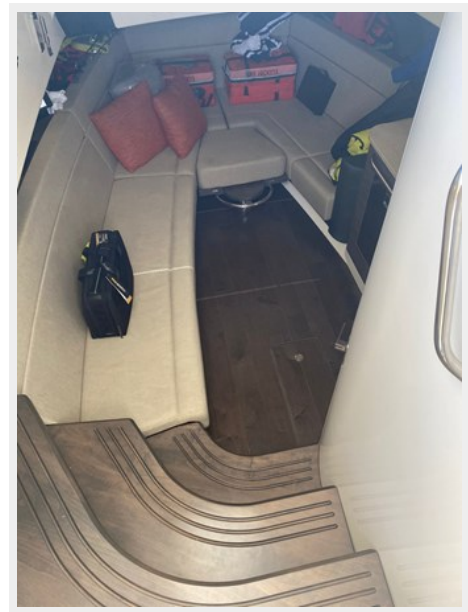
Fuel Type: Gas/Petrol

PHOTOS











CONTACTS

Andrey Shestakov, leading yacht broker of the sales department of Shestakov Yacht Sales Inc. Shestakov Yacht Sales Inc., the official representative of the Miami/Fort Lauderdale FL headquarters.

Contact details

Email: **andrey@shestakovyachtsales.com**

Web: shestakovyachtsales.com/en/

Telephones

USA: **+1(954)274-4435**

Office hours

Monday – Saturday: **9:00 - 21:00** EDT

Sunday: **closed**

Address



Harbour Towne Marina, 850 NE 3rd St, STE 213, Dania, FL 33004