

MAHA — HATTERAS



Builder: HATTERAS

Year Built: 2000

Model: Convertible

Price: PRICE ON APPLICATION

Location: Cayman Islands

LOA: 82' (24.99mm)

Beam: 21

Max Draft: 8' (2.44mm)

Cruise Speed: 18 Knots Kts. (21 MPH)

Max Speed: 22 Knots Kts. (25 MPH)

Our experienced yacht broker, Andrey Shestakov, will help you choose and buy a yacht that best suits your needs **MAHA — HATTERAS** from our catalogue. Presently, at Shestakov Yacht Sales Inc., we have a wide variety of yachts available on our sale's list. We also work in close contact with all the big yacht manufacturers from all over the world.

If you would like to buy a yacht **MAHA — HATTERAS** or would like help answering any questions concerning purchasing, selling or chartering a yacht, please call **+1(954)274-4435**

TABLE OF CONTENTS

TABLE OF CONTENTS	2
SPECIFICATIONS	4
Overview	4
Basic Information	5
Dimensions	5
Speed, Capacities and Weight	5
Accommodations	5
Hull and Deck Information	5
Engine Information	5
PHOTOS	6
3	6
2	6
5	6
4	6
6	6
7	6
8	7
9	7
10	7
11	7
12	7
13	7
14	8
15	8
16	8
17	8
18	8
19	8

20	9
21	9
22	9
23	9
24	9
25	9
26	10
27	10
28	10
29	10
30	11
31	11
32	11
33	11
34	11
35	11
36	12
37	12
39	12
38	12
CONTACTS	13
Contact details	13
Telephones	13
Office hours	13
Address	13

SPECIFICATIONS

Overview

New to Market. Very rare 2000 82 Hatteras Enclosed Bridge Sport Fish.

MAHA has been maintained by the owners of the largest shipyard in Cayman. She has a full time US captain and is maintained with an open check book. MAHA was ordered new by the Crown Prince of Abu Dhabi with every imaginable option. Current owners are the second owners.

MAHA has had many upgrades beginning in 2013 which include;

- Re-powered with CAT C32 engines w/3000 hrs. (90% at low rpm)
- New Upholstery in and out.
- Painted top and bottom.
- New Generators
- All hatches re done in 2019
- NAIAD 302 Fin Stabilizers
- Aquamatic Sea Recovery 1400 GPD Watermaker(256hrs)
- New wall panels.
- New Ray-marine Electronics package in 2016(w/3kw transducer)
- New window caulking.
- New appliances.
- New electric door
- 5 Lumitec Flood lights
- Windows re-sealed 2020
- 1500lb davit.

14ft tender w/Honda 50 HP 2017

Owner is moving up to a larger Motor Yacht. Motivated and wants offers.

Basic Information

Category: Convertible

Sub Category: Convertible

Model Year: 2000

Year Built: 2000

Country: Cayman Islands

Dimensions

LOA: 82' (24.99mm)

Beam: 21

Max Draft: 8' (2.44mm)

Speed, Capacities and Weight

Cruise Speed: 18 Knots Kts. (21 MPH)

Max Speed: 22 Knots Kts. (25 MPH)

Water Capacity: 840 Gallons

Holding Tank: 220 Gal Gallons

Fuel Capacity: 4210 Gal Gallons

Accommodations

Total Cabins: 5

Total Heads: 6

Hull and Deck Information

Hull Material: Fiberglass

Engine Information

Engines: 2

Manufacturer: Caterpillar

Engine Type: Inboard

Fuel Type: Diesel

PHOTOS

2



3



4



5



6



7



8



9



10



11



12



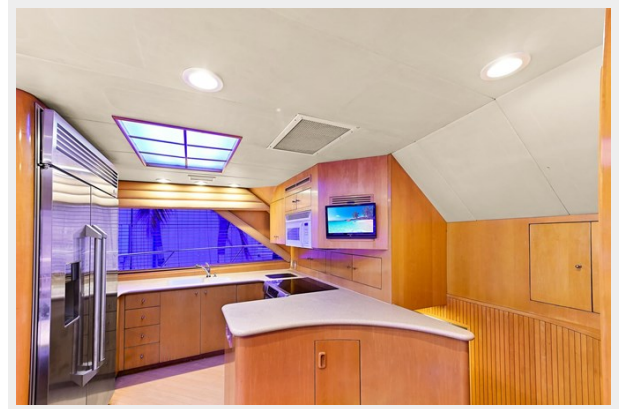
13



14



15



16



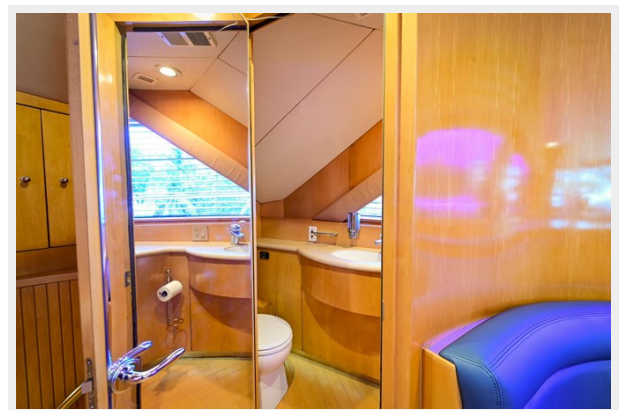
17



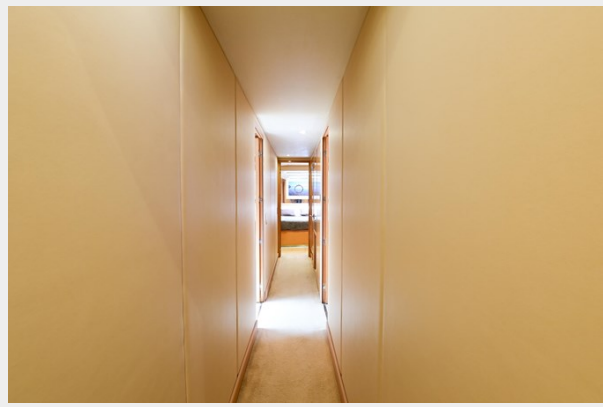
18



19



20



21



22



23



24



25



26



27



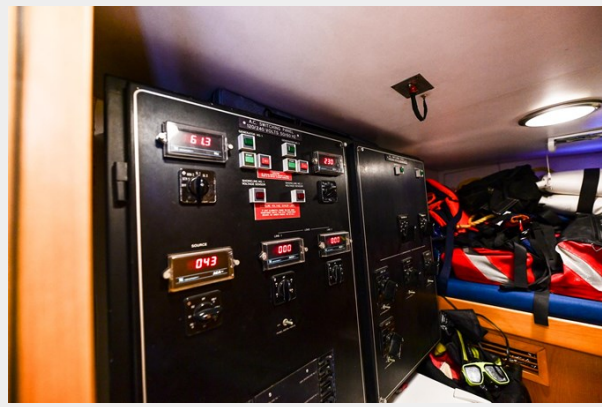
28



29



30



31



32



33



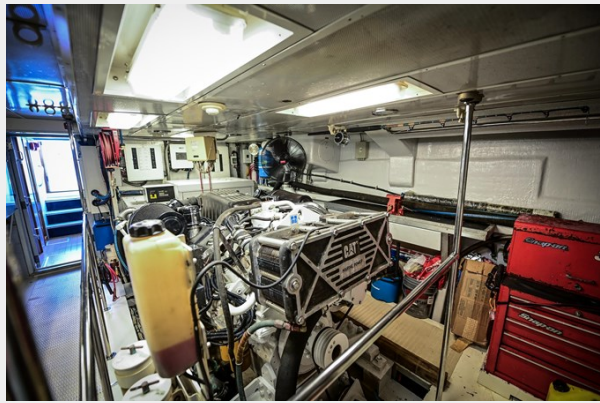
34



35



36



37



38



39



CONTACTS

Andrey Shestakov, leading yacht broker of the sales department of Shestakov Yacht Sales Inc. Shestakov Yacht Sales Inc., the official representative of the Miami/Fort Lauderdale FL headquarters.

Contact details

Email: andrey@shestakovyachtsales.com

Web: shestakovyachtsales.com/en/

Telephones

USA: +1(954)274-4435

Office hours

Monday – Saturday: **9:00 - 21:00** EDT

Sunday: **closed**

Address



Harbour Towne Marina, 850 NE 3rd St,
STE 213, Dania, FL 33004