

VITAMIN SEA — CARVER



Builder: CARVER

LOA: 37' 5" (11.4mm)

Year Built: 1988

Beam: 14

Model: Cruising Yacht

Price: PRICE ON APPLICATION

Location: United States

Our experienced yacht broker, Andrey Shestakov, will help you choose and buy a yacht that best suits your needs **Vitamin Sea — CARVER** from **our catalogue**. Presently, at **Shestakov Yacht Sales Inc.**, we have a wide variety of yachts available on **our sale's list**. We also work in close contact with all the big **yacht manufacturers** from all over the world.

If you would like to buy a yacht **Vitamin Sea — CARVER** or would like help answering any questions concerning purchasing, selling or chartering a yacht, please call **+1(954)274-4435**

TABLE OF CONTENTS

TABLE OF CONTENTS	2
SPECIFICATIONS	4
Overview	4
Basic Information	4
Dimensions	4
Accommodations	4
Hull and Deck Information	5
Engine Information	5
PHOTOS	6
2	6
3	6
4	6
5	6
6	6
7	6
8	7
9	7
10	7
11	7
12	7
13	7
14	8
15	8
16	8
17	8
18	8
19	8
20	9

21	9
22	9
23	9
24	9
25	9
26	10
27	10
28	10
29	10
30	10
31	10
CONTACTS	11
Contact details	11
Telephones	11
Office hours	11
Address	11

SPECIFICATIONS

Overview

One of the most popular models ever made, the Carver 380 Santego combined bold styling with spacious cabin accommodations and a huge, party-time bridge layout. Topside, the Santego is a great boat for entertaining with one of the most user-friendly bridge layouts imaginable. Guest seating surrounds the elevated helm and a gate forward reveals a set of molded steps leading to the foredeck.

The Santego remains one of the most versatile family boats ever produced. She is a terrific day boat and a comfortable coastal cruiser with the amenities of a small motor yacht. Built on a solid fiberglass hull with a wide beam, the enormous condo-like interior of the 380 is easily her most significant feature.

Boasting a full-beam salon with seating for eight, this vast single-level floor-plan includes a full-service galley with serving counter, double-entry head with stall shower, and a large private stateroom with island berth.

Basic Information

Category: Cruising Yacht

Sub Category: Cabin Cruiser

Model Year: 1988

Year Built: 1988

Country: United States

Dimensions

LOA: 37' 5" (11.4mm)

Beam: 14

Accommodations

Total Cabins: 1

Total Heads: 1

Hull and Deck Information

Hull Material: Fiberglass

Engine Information

Engines: 2

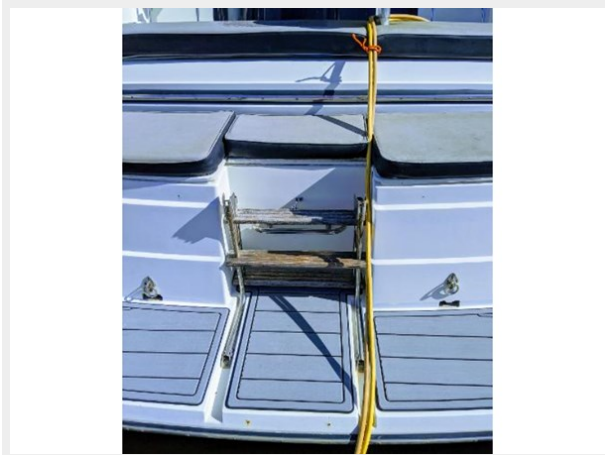
Manufacturer: Mercruiser

Engine Type: Inboard

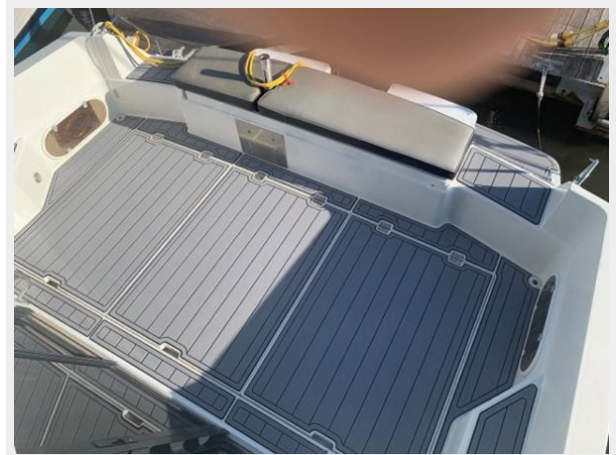
Fuel Type: Gas/Petrol

PHOTOS

2



3



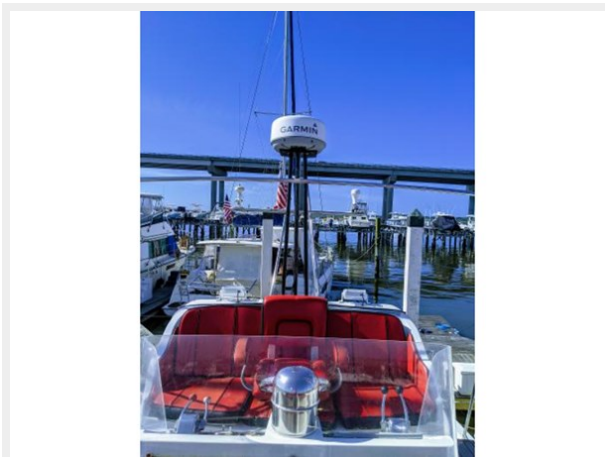
4



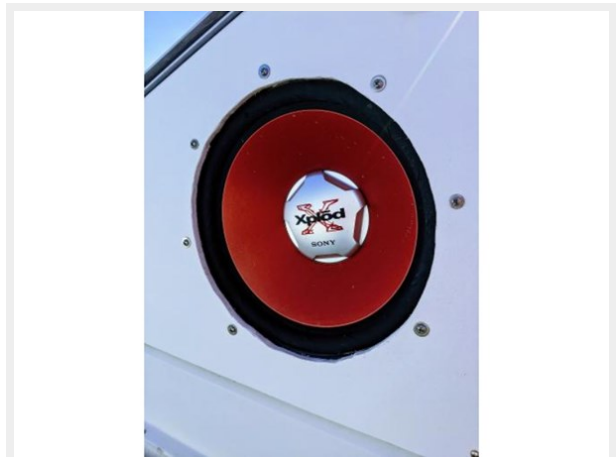
5



6



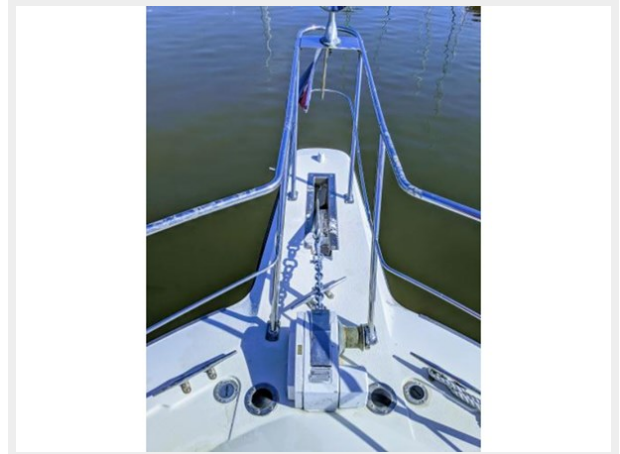
7



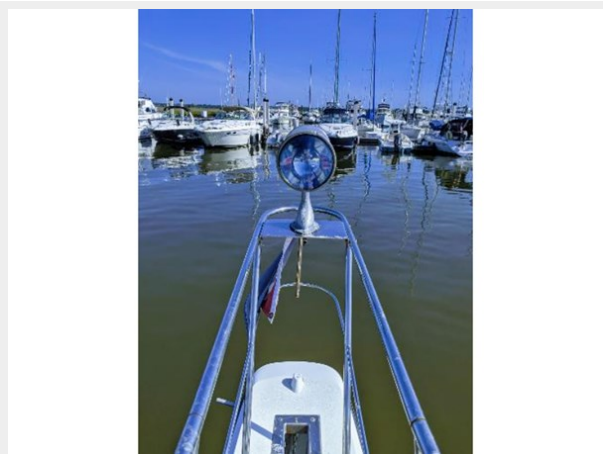
8



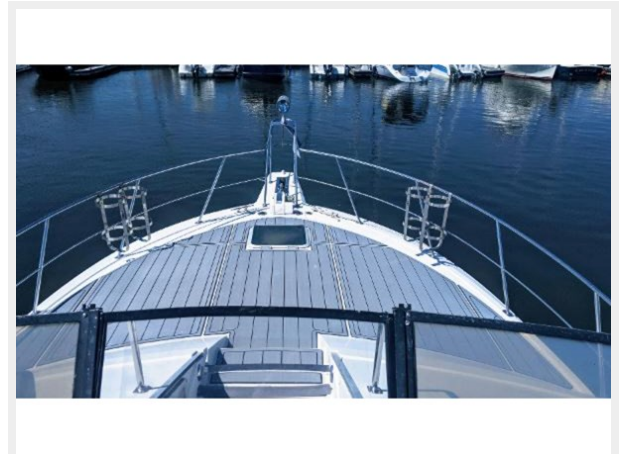
9



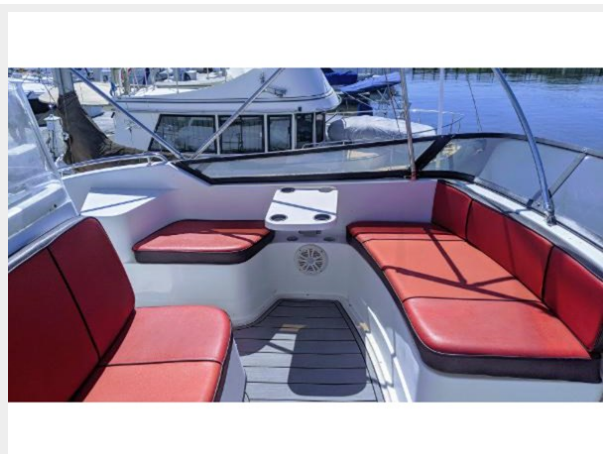
10



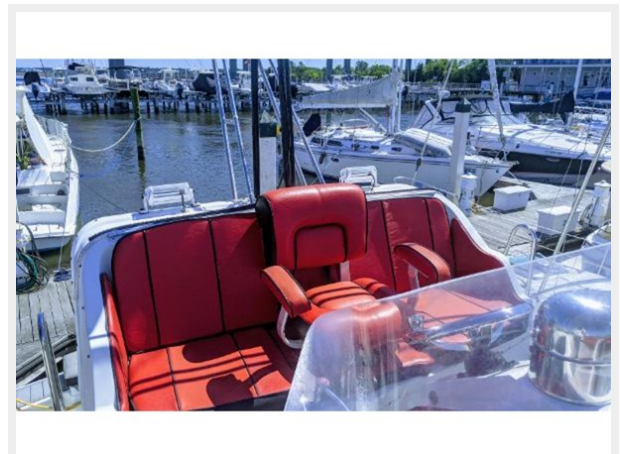
11



12



13



14



15



16



17



18



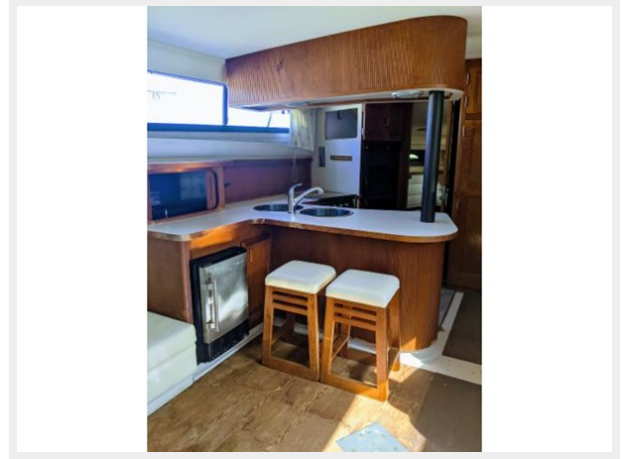
19



20



21



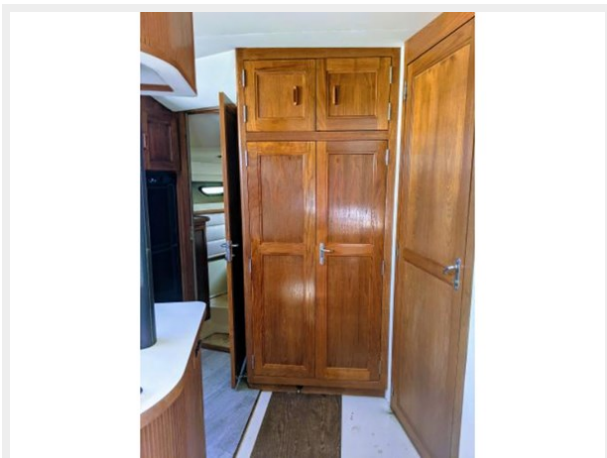
22



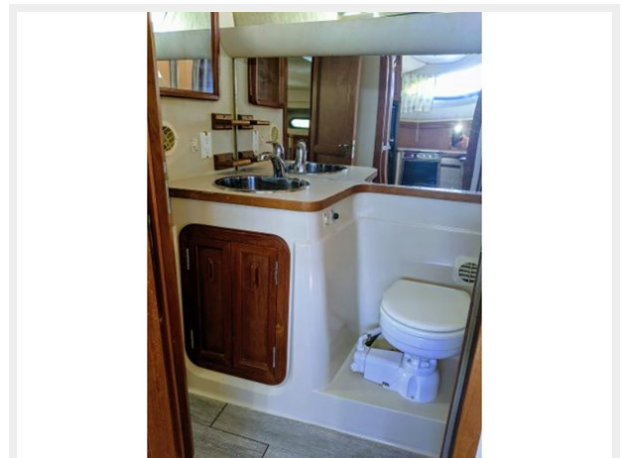
23



24



25



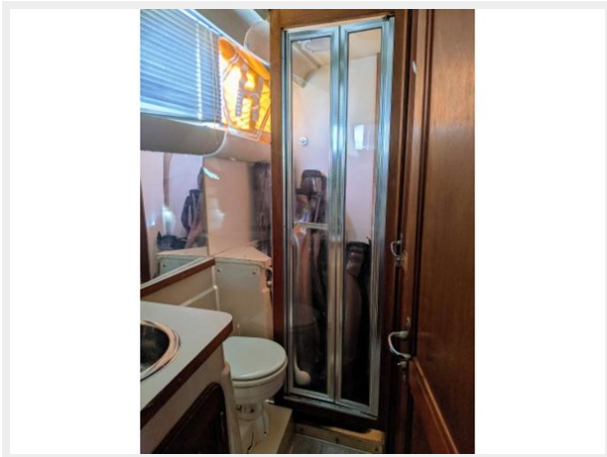
26



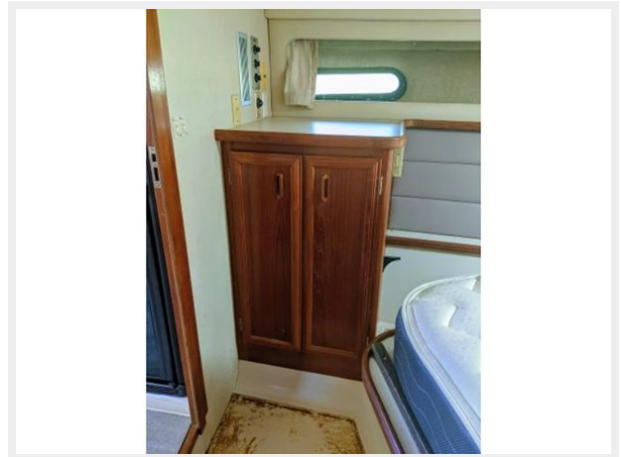
27



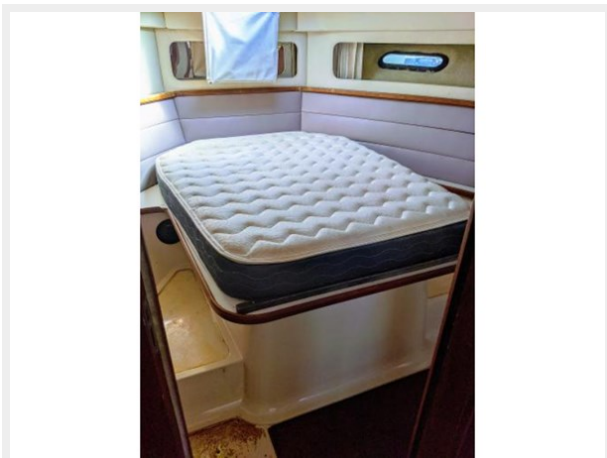
28



29



30



31



CONTACTS

Andrey Shestakov, leading yacht broker of the sales department of Shestakov Yacht Sales Inc. Shestakov Yacht Sales Inc., the official representative of the Miami/Fort Lauderdale FL headquarters.

Contact details

Email: **andrey@shestakovyachtsales.com**

Web: shestakovyachtsales.com/en/

Telephones

USA: **+1(954)274-4435**

Office hours

Monday – Saturday: **9:00 - 21:00** EDT

Sunday: **closed**

Address



Harbour Towne Marina, 850 NE 3rd St, STE 213, Dania, FL 33004