

## NEW VECTOR — SYMBOL



**Builder:** SYMBOL

**Year Built:** 2002

**Model:** Trawler Yacht

**Price:** PRICE ON APPLICATION

**Location:** United States

**LOA:** 42' (12.8mm)

**Beam:** 13.58

**Max Draft:** 4' 7" (1.4mm)

**Cruise Speed:** 8 Knots Kts. (9 MPH)

**Max Speed:** 17 Knots Kts. (20 MPH)

Our experienced yacht broker, Andrey Shestakov, will help you choose and buy a yacht that best suits your needs **New Vector — SYMBOL** from **our catalogue**. Presently, at **Shestakov Yacht Sales Inc.**, we have a wide variety of yachts available on **our sale's list**. We also work in close contact with all the big **yacht manufacturers** from all over the world.

If you would like to buy a yacht **New Vector — SYMBOL** or would like help answering any questions concerning purchasing, selling or chartering a yacht, please call **+1(954)274-4435**

# TABLE OF CONTENTS

TABLE OF CONTENTS	2
SPECIFICATIONS	6
Overview	6
Basic Information	6
Dimensions	6
Speed, Capacities and Weight	6
Accommodations	7
Hull and Deck Information	7
Engine Information	7
PHOTOS	8
002 New Vector	8
001 New Vector	8
003 New Vector	8
003 New Vector Stern	8
0004 New Vector Side decks and Scuppers	9
004 New Vector and Tender	9
005 New Vector Bow	10
005 New Vector Winlass	10
006 Foredeck	10
006 New Vector Bow	10
006 New Vector Foredeck	11
006 Searchlights	11
007 New Vector Sundeck	11
008 New Vecor Sundeck	11
010 New Vector Tender with cover	11
008 Sundeck	11
011 New Vector Tender with cover	12
012 Tender with Davits	12

---

013 Tender with Davits	12
014 Tender Engine	12
016 New Vector Fly-Bridge	12
017 New Vector Fly-Bridge	12
018 New Vector Fly-Bridge	13
019 New Vector Upper Helm	13
021 New Vector Salon entrance aft	13
022 New Vector Salon	13
024 New Vector Salon looking aft	13
023 New Vector Salon	13
026 New Vector Salon port side	14
025 New Vector Salon Setee	14
030 New Vector Lower Helm	14
027 New Vector Salon port side	14
031 New Vector Lower helm	14
032 New Vector Lower Helm	14
040 New Vector Galley	15
041 New Vector Galley	15
042 New Vector Galley	15
043 New Vector Refrigerator	15
044 New Vector Galley	16
045 New Vector Galley	16
046 New Vector Stove	16
050 New Vector Guest Head	16
051 New Vector Guest Head	17
052 New Vector Guest Head	17
061 New Vector Guest Cabin	17
060 New Vector Guest Cabin	17
063 New Vector Guest Cabin Port	18

---

---

062 New Vector Guest Cabin	18
065 New Vectro Guest Cabin Sole	18
064 New Vector Guest Cabin Starboard	18
071 New Vector Master Cabin	18
070 New Vectro Master Cabin	18
072 New Vector Master Cabin Starboard	19
073 New Vector Master Cabin Port	19
074 New Vector Master Cabin Forward	19
075 New Vector Master Cabin Port wide	19
077 New Vector Master Cabin Washer Dryer	19
076 New Vector Master Cabin Forward lockers	19
083 New Vector Master Head	20
082 New Vector Master Head	20
090 New Vector Engine Room entrance	20
084 New Vector Master Head	20
092 New Vector Engine Room Port	21
091 New Vector Engine Room	21
093 New Vector Engine Room Starboard	21
095 New Vector Starboard Engine	21
098 New Vector Port Engine	21
096 New Vector Starboard Engine	21
100 New Vector Starboard Shaft	22
099 New Vector Port Engine	22
104 New Vector Waterheater and Main AC compressor	22
101 New Vector Starboard Shaft	22
106 New Vector Engine Room Generator Controls	22
107 New Vector Generator	22
110 New Vector Smart Charger	23
108 New Vector Oil Change System	23

---

---

111 New Vector Batteries	23
CONTACTS	24
Contact details	24
Telephones	24
Office hours	24
Address	24

---

# SPECIFICATIONS

---

## Overview

---

This 2002 42' Symbol Classic Sundeck Trawler with well regarded and maintained twin Cummins 330hp engines is available now. This vessel is in above average condition in almost every respect. The boat has just recently received new bottom paint, the entire hull has been polished and the engines have been serviced. This year the owner added 20 grand in upgrades like Sea Stairs, 11' tender, davits, salon screens and blinds, LED nav lights and new engine batteries. Other notable equipment includes an 8 hp Vetus bow thruster, Northern Lights 8kw generator, 32k BTU's of cooling/heat, teak and holly Cabin sole, stainless ports, a full enclosure on the flybridge and more. New Vector is 48' in total length including the pulpit and swim platform. This Symbol 42 has seen the Great Loop and been up and down the eastern seaboard numerous times. She is 100% ready to make the loop again tomorrow.

## Basic Information

---

**Category:** Trawler Yacht

**Model Year:** 2002

**Year Built:** 2002

**Country:** United States

## Dimensions

---

**LOA:** 42' (12.8mm)

**Beam:** 13.58

**Max Draft:** 4' 7" (1.4mm)

## Speed, Capacities and Weight

---

**Cruise Speed:** 8 Knots Kts. (9 MPH)

**Max Speed:** 17 Knots Kts. (20 MPH)

**Water Capacity:** 180 Gallons

**Holding Tank:** 50 Gal Gallons

**Fuel Capacity:** 275 Gal Gallons

## Accommodations

---

**Total Cabins:** 2

**Total Heads:** 2

## Hull and Deck Information

---

**Hull Material:** Fiberglass

## Engine Information

---

**Engines:** 2

**Manufacturer:** Cummins

**Engine Type:** Inboard

**Fuel Type:** Diesel



# PHOTOS

**001 New Vector**



**002 New Vector**



**003 New Vector Stern**



**003 New Vector**





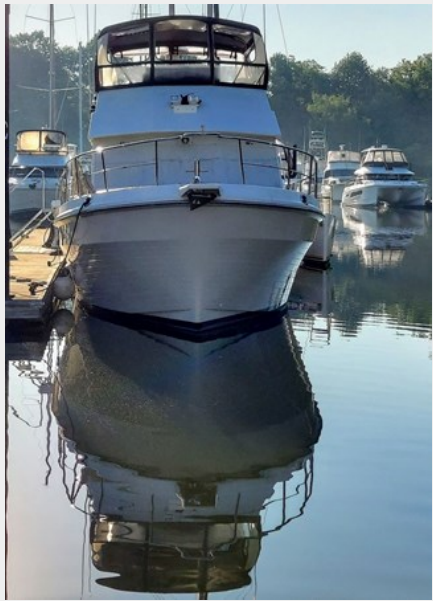
## 0004 New Vector Side decks and Scuppers



## 004 New Vector and Tender



### 005 New Vector Bow



### 005 New Vector Winlass



### 006 Foredeck



### 006 New Vector Bow





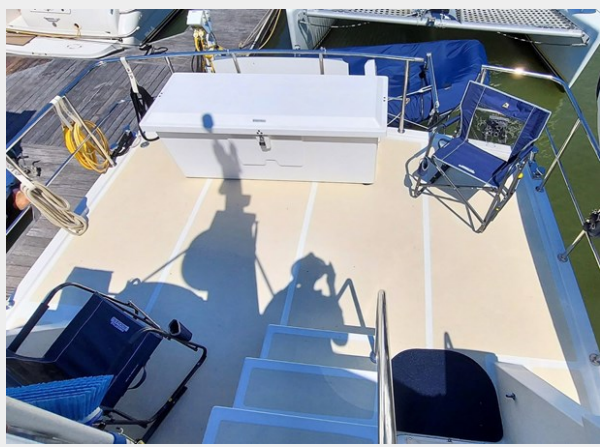
### 006 New Vector Foredeck



### 006 Searchlights



### 007 New Vector Sundeck



### 008 New Vecor Sundeck



### 008 Sundeck



### 010 New Vector Tender with cover





**011 New Vector Tender with cover**



**012 Tender with Davits**



**013 Tender with Davits**



**014 Tender Engine**



**016 New Vector Fly-Bridge**



**017 New Vector Fly-Bridge**





**018 New Vector Fly-Bridge**



**019 New Vector Upper Helm**



**021 New Vector Salon entrance aft**



**022 New Vector Salon**



**023 New Vector Salon**



**024 New Vector Salon looking aft**





**025 New Vector Salon Setee**



**026 New Vector Salon port side**



**027 New Vector Salon port side**



**030 New Vector Lower Helm**



**031 New Vector Lower helm**



**032 New Vector Lower Helm**



**040 New Vector Galley**



**041 New Vector Galley**



**042 New Vector Galley**



**043 New Vector Refrigerator**





### 044 New Vector Galley



### 045 New Vector Galley



### 046 New Vector Stove



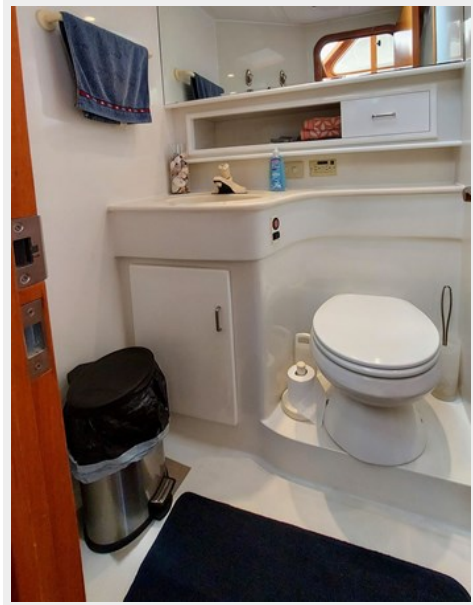
### 050 New Vector Guest Head



**051 New Vector Guest Head**



**052 New Vector Guest Head**



**061 New Vector Guest Cabin**



**060 New Vector Guest Cabin**





**062 New Vector Guest Cabin**



**063 New Vector Guest Cabin Port**



**064 New Vector Guest Cabin Starboard**



**065 New Vectro Guest Cabin Sole**



**070 New Vectro Master Cabin**



**071 New Vector Master Cabin**





**072 New Vector Master Cabin  
Starboard**



**073 New Vector Master Cabin Port**



**074 New Vector Master Cabin  
Forward**



**075 New Vector Master Cabin Port  
wide**



**077 New Vector Master Cabin  
Washer Dryer**



**076 New Vector Master Cabin  
Forward lockers**



### 082 New Vector Master Head



### 083 New Vector Master Head



### 084 New Vector Master Head

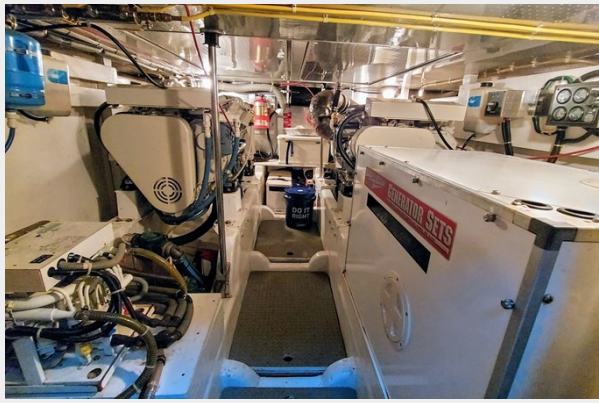


### 090 New Vector Engine Room entrance





**091 New Vector Engine Room**



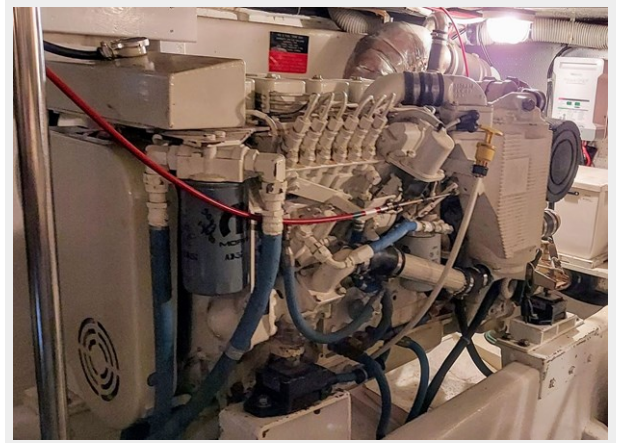
**092 New Vector Engine Room Port**



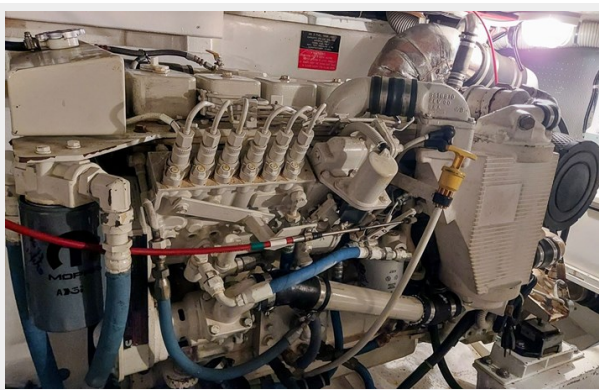
**093 New Vector Engine Room Starboard**



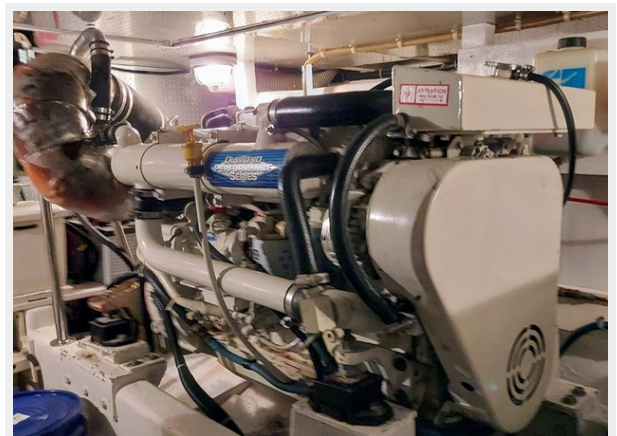
**095 New Vector Starboard Engine**



**096 New Vector Starboard Engine**

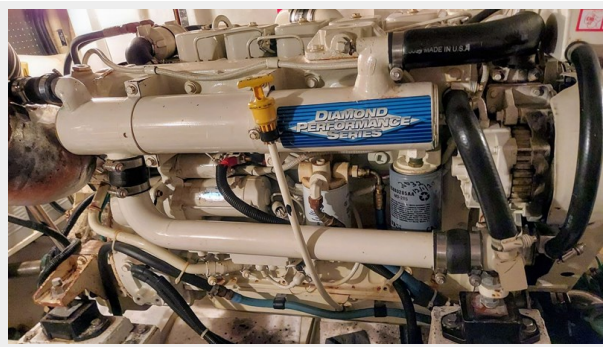


**098 New Vector Port Engine**

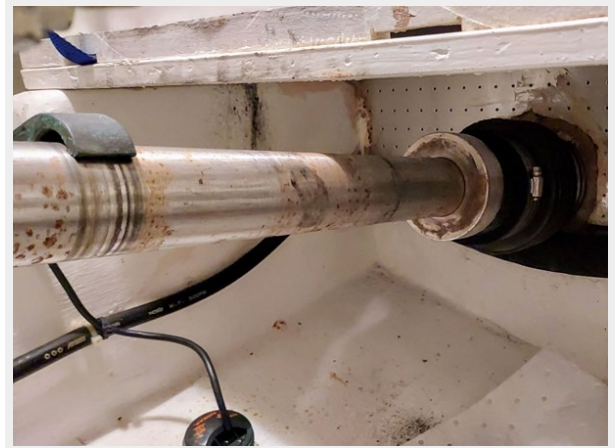




**099 New Vector Port Engine**



**100 New Vector Starboard Shaft**



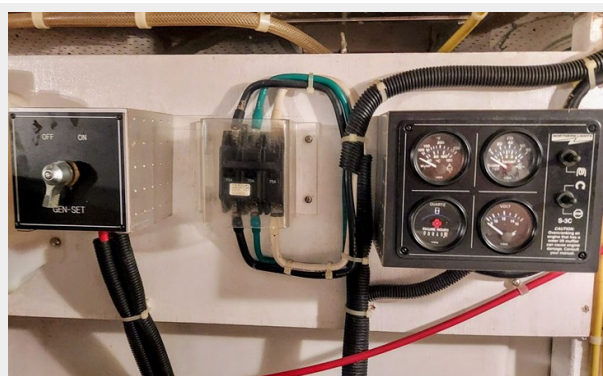
**104 New Vector Waterheater and Main AC compressor**



**101 New Vector Starboard Shaft**



**106 New Vector Engine Room Generator Controls**

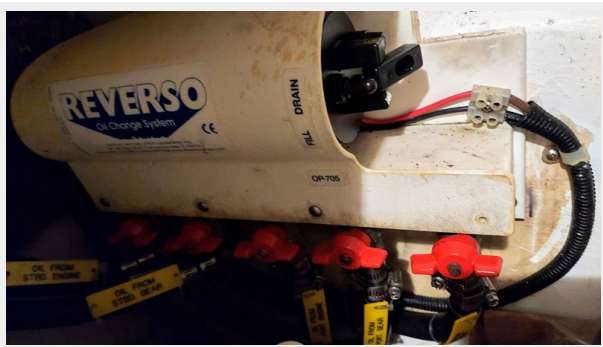


**107 New Vector Generator**

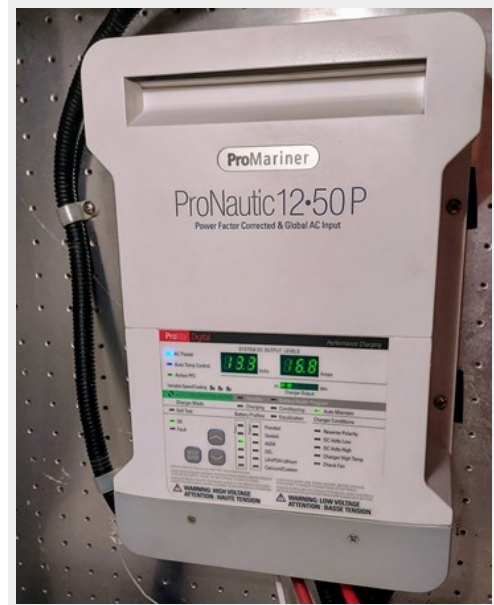




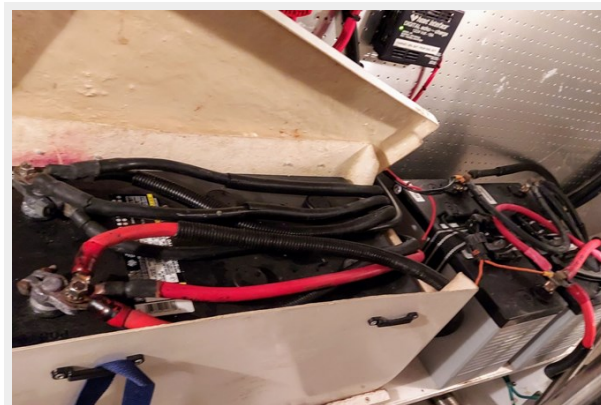
### 108 New Vector Oil Change System



### 110 New Vector Smart Charger



### 111 New Vector Batteries



# CONTACTS

---

Andrey Shestakov, leading yacht broker of the sales department of Shestakov Yacht Sales Inc. Shestakov Yacht Sales Inc., the official representative of the Miami/Fort Lauderdale FL headquarters.

## Contact details

---

Email: **andrey@shestakovyachtsales.com**

Web: [shestakovyachtsales.com/en/](https://shestakovyachtsales.com/en/)

## Telephones

---

USA: **+1(954)274-4435**

## Office hours

---

Monday – Saturday: **9:00 - 21:00** EDT

Sunday: **closed**

## Address

---



Harbour Towne Marina, 850 NE 3rd St, STE 213, Dania, FL 33004