

# 2016 SANLORENZO SL106 #625 — SANLORENZO



**Builder:** SANLORENZO

**Year Built:** 2016

**Model:** Motor Yacht

**Price:** PRICE ON APPLICATION

**LOA:** 105' 8" (32.2mm)

**Beam:** 23.12

**Max Draft:** 6' 7" (2mm)

**Cruise Speed:** 24 Knots Kts. (28 MPH)

**Max Speed:** 28 Knots Kts. (32 MPH)

Our experienced yacht broker, Andrey Shestakov, will help you choose and buy a yacht that best suits your needs 2016 Sanlorenzo SL106 #625 — SANLORENZO from our catalogue. Presently, at Shestakov Yacht Sales Inc., we have a wide variety of yachts available on our sale's list. We also work in close contact with all the big yacht manufacturers from all over the world.

If you would like to buy a yacht 2016 Sanlorenzo SL106 #625 — SANLORENZO or would like help answering any questions concerning purchasing, selling or chartering a yacht, please call +1(954)274-4435

---

# TABLE OF CONTENTS

---

|                              |   |
|------------------------------|---|
| TABLE OF CONTENTS            | 2 |
| SPECIFICATIONS               | 3 |
| Overview                     | 3 |
| Basic Information            | 3 |
| Dimensions                   | 3 |
| Speed, Capacities and Weight | 3 |
| Accommodations               | 3 |
| Hull and Deck Information    | 3 |
| Engine Information           | 4 |
| PHOTOS                       | 5 |
| CONTACTS                     | 8 |
| Contact details              | 8 |
| Telephones                   | 8 |
| Office hours                 | 8 |
| Address                      | 8 |

---

# SPECIFICATIONS

---

## Overview

---

N/A

## Basic Information

---

**Category:** Motor Yacht

**Model Year:** 2016

**Year Built:** 2016

## Dimensions

---

**LOA:** 105' 8" (32.2mm)

**Beam:** 23.12

**Max Draft:** 6' 7" (2mm)

## Speed, Capacities and Weight

---

**Cruise Speed:** 24 Knots Kts. (28 MPH)

**Max Speed:** 28 Knots Kts. (32 MPH)

**Water Capacity:** 2800 Gallons

**Holding Tank:** 158.5 Gal Gallons

**Fuel Capacity:** 2192.63 Gal Gallons

## Accommodations

---

**Total Cabins:** 5

## Hull and Deck Information

---

**Hull Material:** GRP

**Deck Material:** Teak

**Hull Color:** White

---

## Engine Information

---

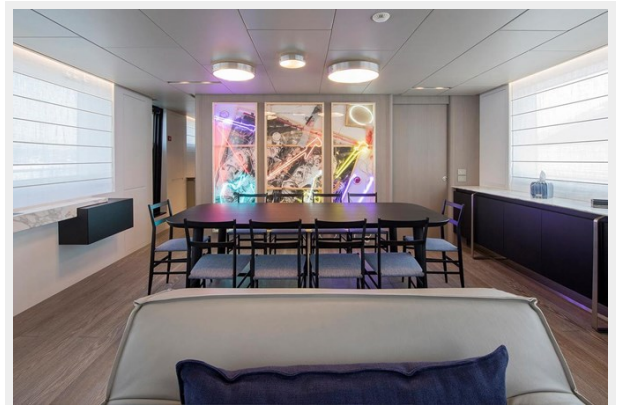
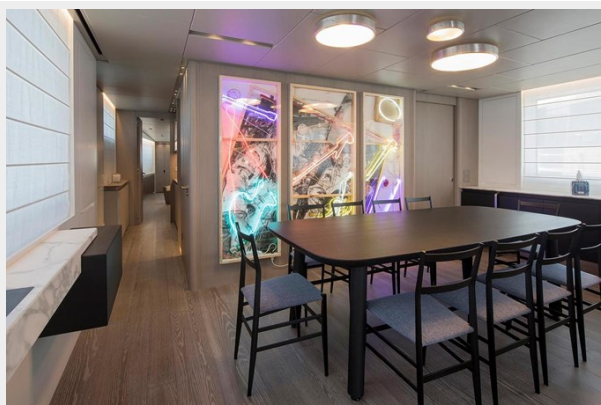
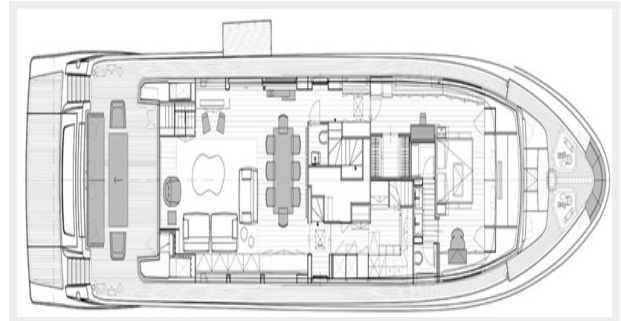
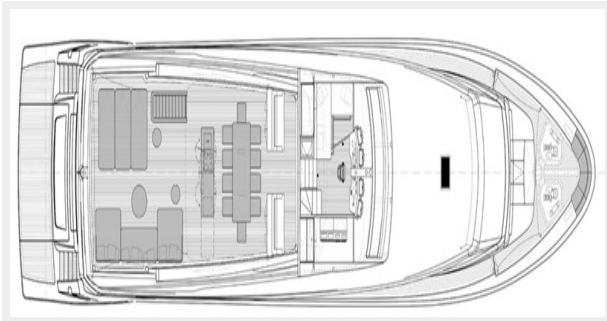
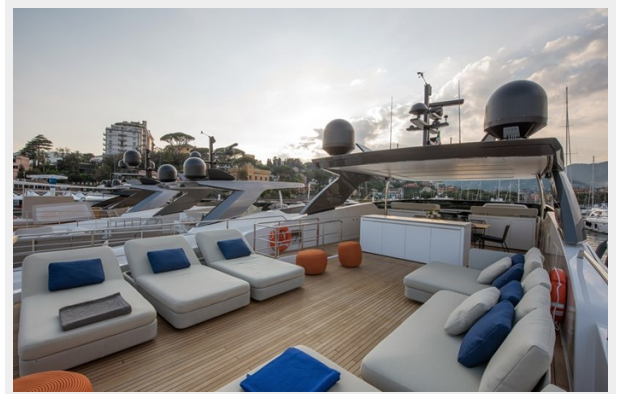
**Engines:** 2

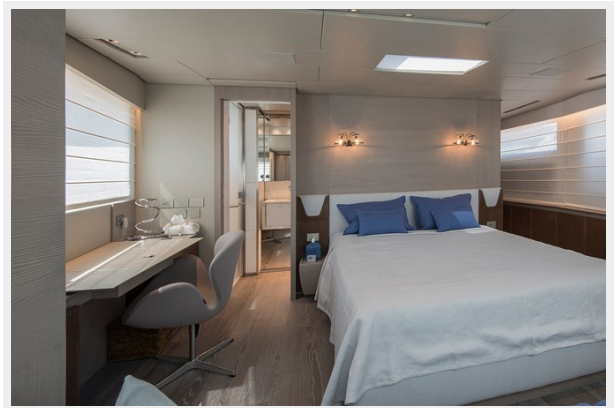
**Manufacturer:** MTU

**Engine Type:** Inboard

**Fuel Type:** Diesel

# PHOTOS







# CONTACTS

---

Andrey Shestakov, leading yacht broker of the sales department of Shestakov Yacht Sales Inc. Shestakov Yacht Sales Inc., the official representative of the Miami/Fort Lauderdale FL headquarters.

## Contact details

---

Email: [andrey@shestakovyachtsales.com](mailto:andrey@shestakovyachtsales.com)

Web: [shestakovyachtsales.com/en/](http://shestakovyachtsales.com/en/)

## Telephones

---

USA: +1(954)274-4435

## Office hours

---

Monday – Saturday: **9:00 - 21:00** EDT

Sunday: **closed**

## Address

---



Harbour Towne Marina, 850 NE 3rd St,  
STE 213, Dania, FL 33004