

PLEIADES — BENETEAU



Builder: BENETEAU

Year Built: 2016

Model: Cruising Sailboat

Price: PRICE ON APPLICATION

Location: United States

LOA: 48' (14.63mm)

Beam: 15.58

Max Draft: 6' (1.83mm)

Our experienced yacht broker, Andrey Shestakov, will help you choose and buy a yacht that best suits your needs **Pleiades — BENETEAU** from our catalogue. Presently, at Shestakov Yacht Sales Inc., we have a wide variety of yachts available on our sale's list. We also work in close contact with all the big yacht manufacturers from all over the world.

If you would like to buy a yacht **Pleiades — BENETEAU** or would like help answering any questions concerning purchasing, selling or chartering a yacht, please call **+1(954)274-4435**

TABLE OF CONTENTS

TABLE OF CONTENTS	2
SPECIFICATIONS	5
Overview	5
Basic Information	5
Dimensions	6
Speed, Capacities and Weight	6
Accommodations	6
Hull and Deck Information	6
Engine Information	6
PHOTOS	7
2	7
3	7
4	7
5	7
6	8
7	8
8	8
9	8
10	9
11	9
13	9
12	9
15	10
14	10
16	10
17	10
18	11
19	11

20	11
21	11
23	12
22	12
24	12
25	12
27	13
26	13
28	13
29	13
30	13
31	13
33	14
32	14
34	14
35	14
36	15
37	15
39	15
38	15
41	16
40	16
42	16
43	16
44	17
45	17
46	17
47	17
48	17

49	17
50	18
51	18
53	18
52	18
54	19
55	19
56	19
57	19
59	20
58	20
60	20
61	20
62	20
63	20
64	21
65	21
67	21
66	21
68	21
69	21
70	22
71	22
CONTACTS	23
Contact details	23
Telephones	23
Office hours	23
Address	23

SPECIFICATIONS

Overview

This 3-cabin, 2-head Beneteau Oceanis 48 is in the water in Deltaville, VA. Pleiades is lightly used and has only been sailed on the Chesapeake Bay, but this is an ocean-going vessel, strong, sea-worthy and sea-kindly with phenomenal sailing characteristics and copious accommodations. The Oceanis 48 was designed for maximum performance and maximum comfort. The beam is carried all the way aft with a hard chine allows the boat to heel to the chine and then track beautifully, getting 'into the groove' with speed and comfort. The chine also serves to increase the interior volume above the waterline, so the living quarters are large and can accommodate a family or a couple with guests.

Pleiades has teak side decks and cockpit floor, which add to its character. The large cockpit has a fiberglass arch forward and a stainless steel arch, with davits, aft. The full-width, fold-down transom which can be raised and lowered by the push of a button, makes this model exceptional. No other monohull provides this amount of uninterrupted access to the water.

Pleiades has the following upgrades and equipment:

Yanmar 4JH80 w/ 178 hours Generator 7.5 KW (57 hours)

Shoal Draft (5'11") Self-tacking Jib Hardware & Jib Gennaker Gear Inmast Furling ICW friendly mast Electric Secondary Winch on coachroof Electric Primary winches (2) Composite Wheels S/S Arch & Davits Drop down transom w/ electric switch B & G Autopilot w/ wireless remote B & G AIS 400 B & G Radar Cruise Air Aircon/Heat B & G Chartplotters (7") Code 0 (2019) New Batteries (2021) Extra Water Tanks Folding Prop Bowthruster Dinghy and Torqueedo Outboard

Pleiades is the only OC 48 on the market in the US (June 2021). If you are looking for this model, call soon!

Basic Information

Category: Cruising Sailboat

Model Year: 48

Year Built: 2016

Country: United States

Dimensions

LOA: 48' (14.63mm)

Beam: 15.58

Max Draft: 6' (1.83mm)

Speed, Capacities and Weight

Water Capacity: 183 Gallons

Holding Tank: 40 Gal Gallons

Fuel Capacity: 53 Gal Gallons

Accommodations

Total Cabins: 3

Hull and Deck Information

Hull Material: Fiberglass

Engine Information

Engines: 1

Manufacturer: Yanmar

Engine Type: Inboard

Fuel Type: Diesel

PHOTOS

2



3



4



5



6



7



8



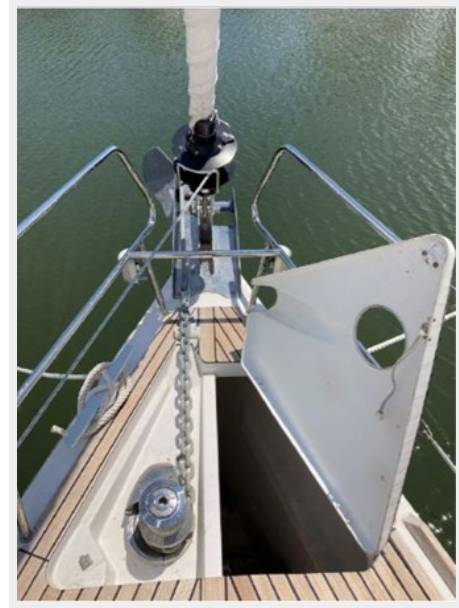
9



10



11



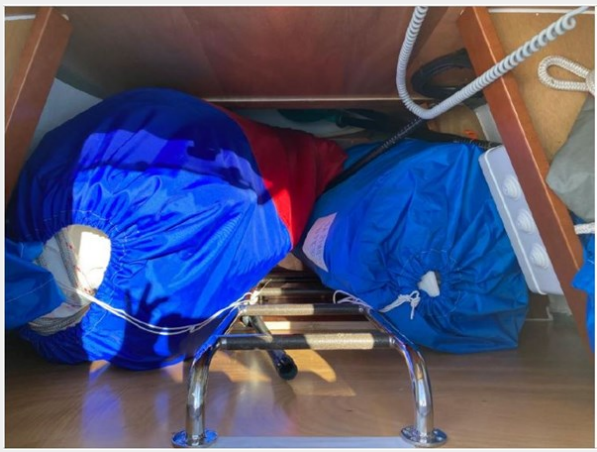
12



13



14



15



16



17



18



19



20



21



22



23



24



25



26



27



28



29



30



31



32



33



34



35



36



37



38



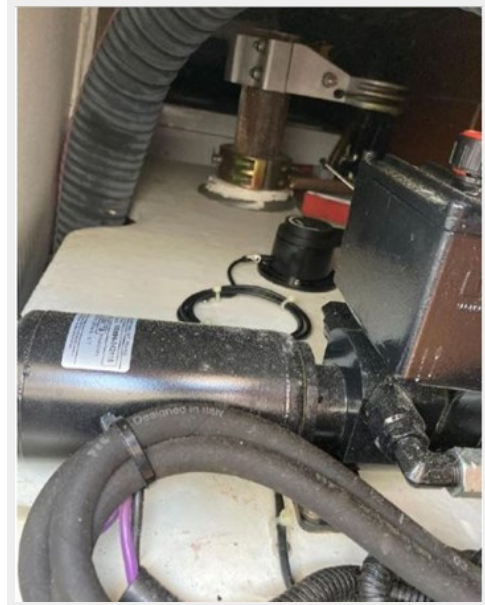
39



40



41



42



43



44



45



46



47



48



49



50



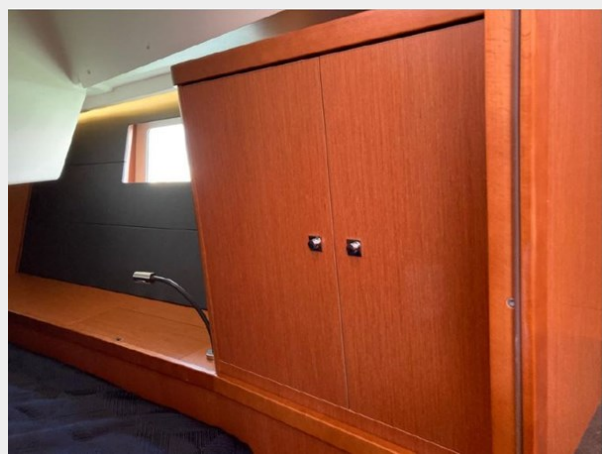
51



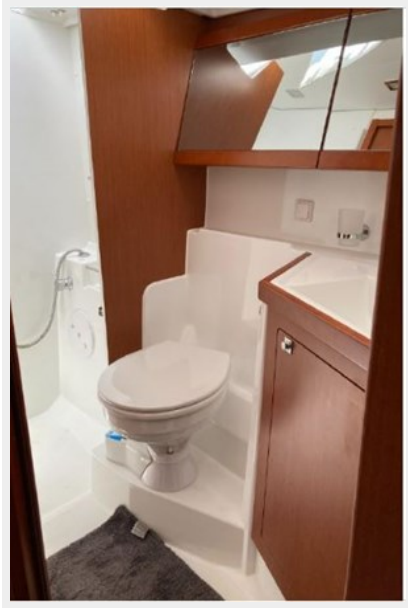
53



52



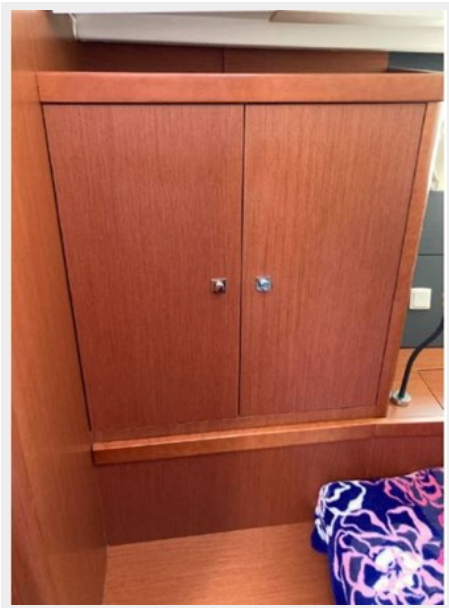
54



55



56



57



58



59



60



61



62



63



64



65



66



67



68



69



70



71



CONTACTS

Andrey Shestakov, leading yacht broker of the sales department of Shestakov Yacht Sales Inc. Shestakov Yacht Sales Inc., the official representative of the Miami/Fort Lauderdale FL headquarters.

Contact details

Email: andrey@shestakovyachtsales.com

Web: shestakovyachtsales.com/en/

Telephones

USA: +1(954)274-4435

Office hours

Monday – Saturday: **9:00 - 21:00** EDT

Sunday: **closed**

Address



Harbour Towne Marina, 850 NE 3rd St,
STE 213, Dania, FL 33004