

ALEXELLE — PACIFIC MARINER



Builder: PACIFIC MARINER

Year Built: 2005

Model: Motor Yacht

Price: PRICE ON APPLICATION

Location: United States

LOA: 65' (19.81mm)

Beam: 17.25

Max Draft: 5' (1.52mm)

Cruise Speed: 20 Knots Kts. (23 MPH)

Max Speed: 24 Knots Kts. (28 MPH)

Our experienced yacht broker, Andrey Shestakov, will help you choose and buy a yacht that best suits your needs **ALEXELLE — PACIFIC MARINER** from our catalogue. Presently, at Shestakov Yacht Sales Inc., we have a wide variety of yachts available on our sale's list. We also work in close contact with all the big yacht manufacturers from all over the world.

If you would like to buy a yacht **ALEXELLE — PACIFIC MARINER** or would like help answering any questions concerning purchasing, selling or chartering a yacht, please call **+1(954)274-4435**

TABLE OF CONTENTS

TABLE OF CONTENTS	2
SPECIFICATIONS	5
Overview	5
Basic Information	5
Dimensions	5
Speed, Capacities and Weight	5
Accommodations	5
Hull and Deck Information	6
Engine Information	6
PHOTOS	7
Foredeck	7
Sun Pad	7
Walk Around Decks	7
Starboard Flip Out Control Station	7
Flybridge Helm	8
Flybridge Helm	8
Flybridge Helm	8
Flybridge Helm and Companion Seats	8
Flybridge Access from Pilothouse	8
Flybridge Settee	8
Flybridge Grill	9
Flybridge Arch	9
Flybridge Access Hatch from Aft Deck	9
Tender	9
Tender	9
Tender Helm	9
Tender Console	10
Aft Deck-Access Ladder to Flybridge	10

Aft Deck Access to Crew and Engine Room	10
Aft Deck Settee with Dining Table	10
Aft Deck Docking Station	10
Swim Platform with Storage	10
Pilothouse Helm Station	11
Pilothouse Helm and Companion Seats	11
Pilothouse Settee with Dining Table	11
Galley Starboard Side Buffet - Dish Locker	11
Stairwell to Owners / Guest Quarters	11
Galley	11
Galley Upgraded Amtico Flooring	12
Galley	12
Main Salon	12
Main Salon 42" TV	12
Main Salon and Wine Cooler	12
Main Salon Sofa with Hi Lo Table	12
Main Salon	13
Main Salon	13
DC Electric Panel	13
Generator Remote Start Panel	13
Master Stateroom with King Berth	13
Master Stateroom	13
Master Stateroom Dresser	14
Master Stateroom Desk	14
Master Stateroom Desk	14
Master Stateroom Head -Ensuite	14
Master Stateroom - Tub - Shower	14
VIP Stateroom	14
VIP Stateroom	15

VIP Stateroom	15
VIP Stateroom Head	15
VIP Stateroom - Ensuite Head	15
Port Twin Berth Guest Stateroom	15
Port Guest Stateroom - Ensuite Head	15
Twin Berth Guest-Day Head	16
Engine Room	16
Engine Room	16
Engine Room 20 kW Generator	16
CONTACTS	17
Contact details	17
Telephones	17
Office hours	17
Address	17

SPECIFICATIONS

Overview

N/A

Basic Information

Category: Motor Yacht

Sub Category: Pilothouse

Model Year: 2006

Year Built: 2005

Country: United States

Dimensions

LOA: 65' (19.81mm)

Beam: 17.25

Max Draft: 5' (1.52mm)

Speed, Capacities and Weight

Cruise Speed: 20 Knots Kts. (23 MPH)

Max Speed: 24 Knots Kts. (28 MPH)

Gross Tonnage: 40 Pounds

Water Capacity: 285 Gallons

Holding Tank: 125 Gal Gallons

Fuel Capacity: 1100 Gal Gallons

Accommodations

Total Cabins: 3

Total Heads: 4

Crew Heads: 1

Hull and Deck Information

Hull Material: Fiberglass

Hull Configuration: Semi-Displacement

Hull Designer: William Garden

Engine Information

Engines: 2

Manufacturer: MTU

Engine Type: Inboard

Fuel Type: Diesel

PHOTOS

Foredeck



Sun Pad



Walk Around Decks



Starboard Flip Out Control Station



Flybridge Helm



Flybridge Helm



Flybridge Helm



Flybridge Helm and Companion Seats



Flybridge Access from Pilothouse



Flybridge Settee



Flybridge Grill



Flybridge Arch



Flybridge Access Hatch from Aft Deck



Tender



Tender



Tender Helm



Tender Console

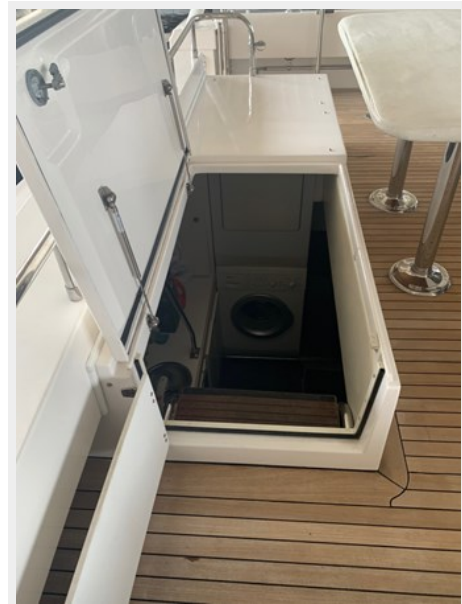


Aft Deck-Access Ladder to Flybridge



Aft Deck Access to Crew and Engine Room

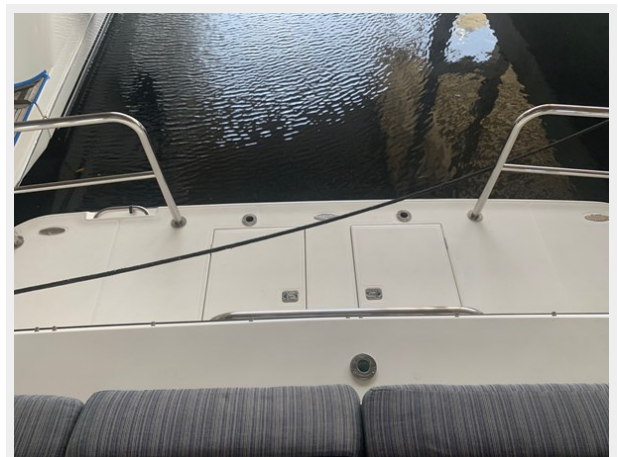
Aft Deck Settee with Dining Table



Aft Deck Docking Station



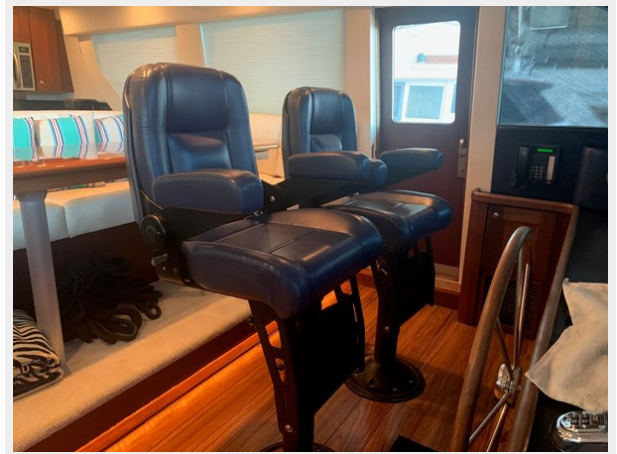
Swim Platform with Storage



Pilothouse Helm Station



Pilothouse Helm and Companion Seats



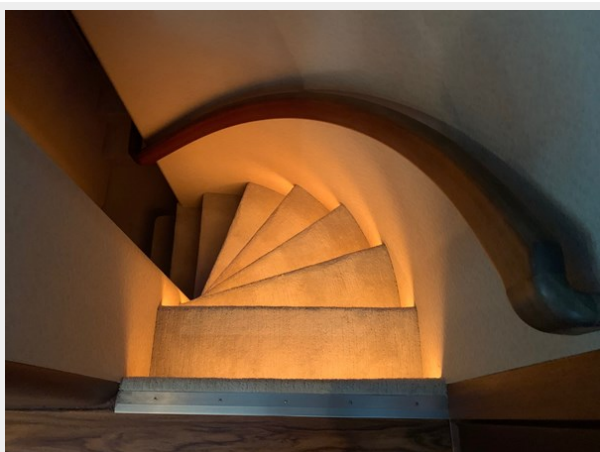
Pilothouse Settee with Dining Table



Galley Starboard Side Buffet - Dish Locker



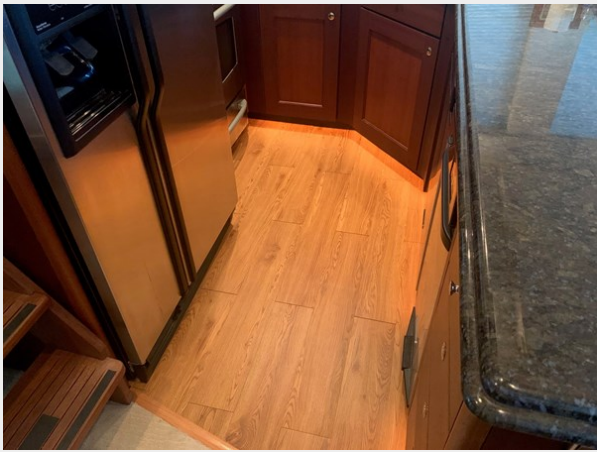
Stairwell to Owners / Guest Quarters



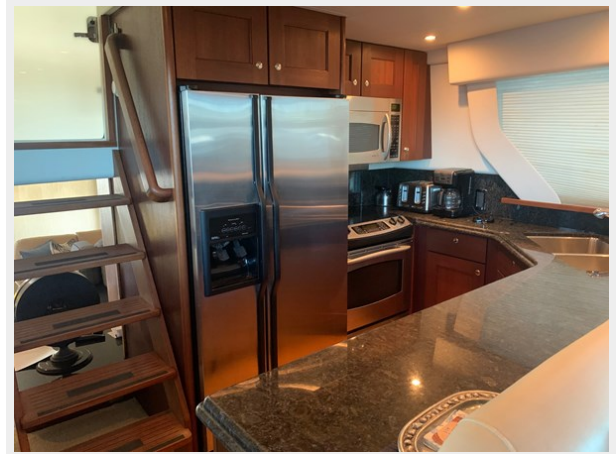
Galley



Galley Upgraded Amtico Flooring



Galley



Main Salon



Main Salon 42" TV



Main Salon and Wine Cooler



Main Salon Sofa with Hi Lo Table



Main Salon



Main Salon



DC Electric Panel



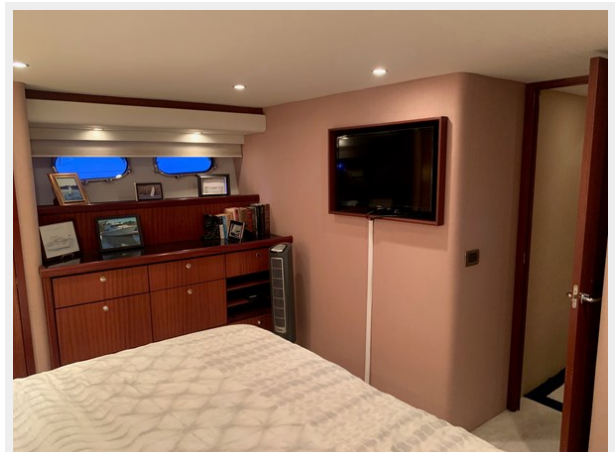
Generator Remote Start Panel



Master Stateroom with King Berth



Master Stateroom



Master Stateroom Dresser



Master Stateroom Desk



Master Stateroom Desk



Master Stateroom Head -Ensuite



Master Stateroom - Tub - Shower



VIP Stateroom



VIP Stateroom



VIP Stateroom



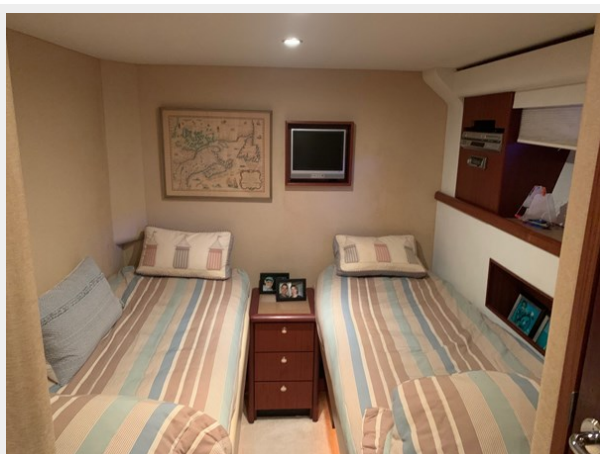
VIP Stateroom Head



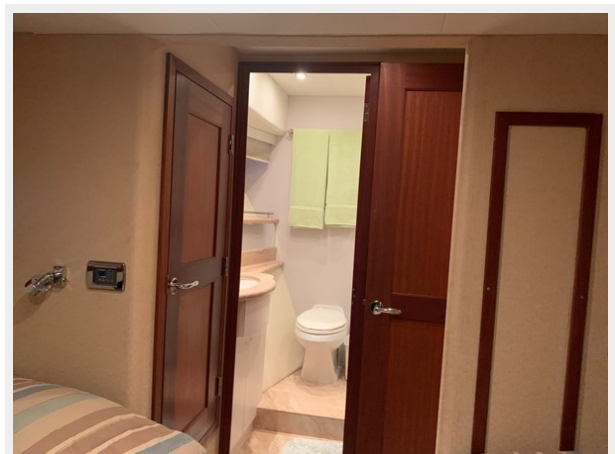
VIP Stateroom - Ensuite Head



Port Twin Berth Guest Stateroom



Port Guest Stateroom - Ensuite Head



Twin Berth Guest-Day Head



Engine Room



Engine Room



Engine Room 20 kW Generator



CONTACTS

Andrey Shestakov, leading yacht broker of the sales department of Shestakov Yacht Sales Inc. Shestakov Yacht Sales Inc., the official representative of the Miami/Fort Lauderdale FL headquarters.

Contact details

Email: andrey@shestakovyachtsales.com

Web: shestakovyachtsales.com/en/

Telephones

USA: +1(954)274-4435

Office hours

Monday – Saturday: **9:00 - 21:00** EDT

Sunday: **closed**

Address



Harbour Towne Marina, 850 NE 3rd St,
STE 213, Dania, FL 33004