

TOO ELUSIVE — SOUTHERN OCEAN



Builder: SOUTHERN OCEAN

Year Built: 1985

Model: Cruising Ketch

Price: PRICE ON APPLICATION

Location: United States

LOA: 80' (24.38m)

Beam: 20.5

Min Draft: 8' 11" (2.72m)

Max Draft: 9' 5" (2.87m)

Cruise Speed: 8.5 Knots Kts. (10 MPH)

Max Speed: 10 Knots Kts. (12 MPH)

Our experienced yacht broker, Andrey Shestakov, will help you choose and buy a yacht that best suits your needs **Too Elusive — SOUTHERN OCEAN** from our catalogue. Presently, at Shestakov Yacht Sales Inc., we have a wide variety of yachts available on our sale's list. We also work in close contact with all the big yacht manufacturers from all over the world.

If you would like to buy a yacht **Too Elusive — SOUTHERN OCEAN** or would like help answering any questions concerning purchasing, selling or chartering a yacht, please call **+1(954)274-4435**

TABLE OF CONTENTS

TABLE OF CONTENTS	2
SPECIFICATIONS	4
Overview	4
Basic Information	4
Dimensions	4
Speed, Capacities and Weight	4
Accommodations	4
Hull and Deck Information	5
Engine Information	5
PHOTOS	6
Saloon II,	6
Saloon	6
Interior Living area	6
Master Cabin	6
Master Vanity	6
Master Stateroom Looking out	6
Port Stateroom	7
Port Stateroom	7
Port Guest Head and Shower	7
Starboard Stateroom,	7
Starboard Berth	7
Starboard Head and shower	7
Galley I	8
Nav Station	8
GAlley II	8
Refrigeration II	8
Refrigeration	9
Stove	9

Main Engine	9
Bilge storage area	9
Auxiliary Generator	10
Steering mechanism	10
Bow on	10
Transom and crew	10
Decks	10
At anchor	10
Overtaking	11
Full sail	11
Port Tack, bow shot	11
Roque-Island	11
300-4-925x614	11
Too Elusive	11
Labrador	12
Too Elusive	12
In Slings. FSS Belfast	12
MS Harborfest	12
Layout	12
CONTACTS	13
Contact details	13
Telephones	13
Office hours	13
Address	13

SPECIFICATIONS

Overview

Basic Information

Category: Cruising Ketch

Model Year: 1985

Year Built: 1985

Refit Type: maintenance and changes

Country: United States

Dimensions

LOA: 80' (24.38mm)

Beam: 20.5

Min Draft: 8' 11" (2.72mm)

Max Draft: 9' 5" (2.87mm)

Speed, Capacities and Weight

Cruise Speed: 8.5 Knots Kts. (10 MPH)

Cruise Speed Range: 1350

Max Speed: 10 Knots Kts. (12 MPH)

Gross Tonnage: 63 Pounds

Water Capacity: 800 Gallons

Holding Tank: 250 Gal Gallons

Fuel Capacity: 950 Gal Gallons

Accommodations

Total Cabins: 5

Total Berths: 8

Sleeps: 11

Total Heads: 5

Crew Cabin: 4

Crew Berths: 4

Crew Heads: 2

Hull and Deck Information

Hull Material: Fiberglass

Deck Material: Teak and Fiberglass

Hull Color: Flag Blue

Hull Designer: Doug Peterson

Exterior Designer: Doug Peterson

Interior Designer: Andrew Winch /
Bannenburg

Engine Information

Engines: 1

Manufacturer: Yanmar

Engine Type: Inboard

Fuel Type: Diesel

PHOTOS

Saloon



Saloon II,



Interior Living area



Master Cabin



Master Stateroom Looking out



Master Vanity



Port Stateroom



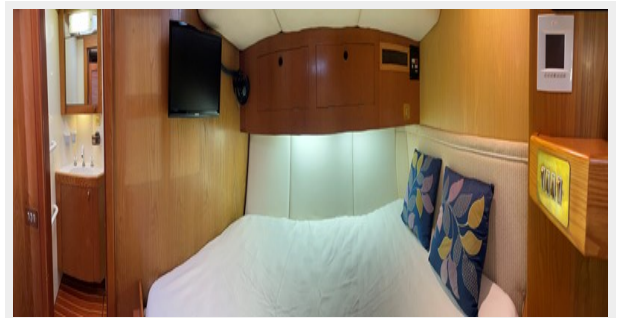
Port Stateroom



Port Guest Head and Shower



Starboard Stateroom,



Starboard Berth



Starboard Head and shower



Nav Station



Galley I



GAlley II



Refrigeration II



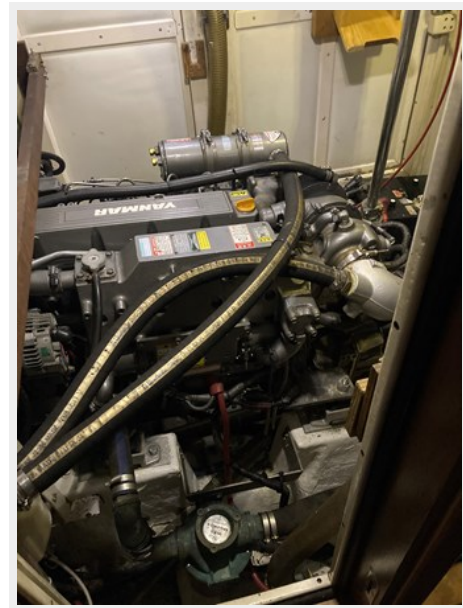
Refrigeration



Stove



Main Engine



Bilge storage area



Auxiliary Generator



Steering mechanism



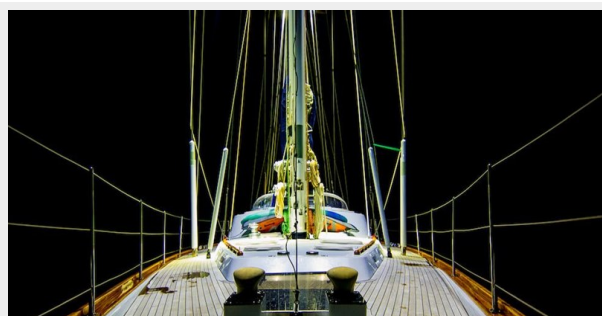
Bow on



Transom and crew



Decks



At anchor



Overtaking



Full sail



Port Tack, bow shot



Roque-Island



300-4-925x614



Too Elusive



Labrador



Too Elusive



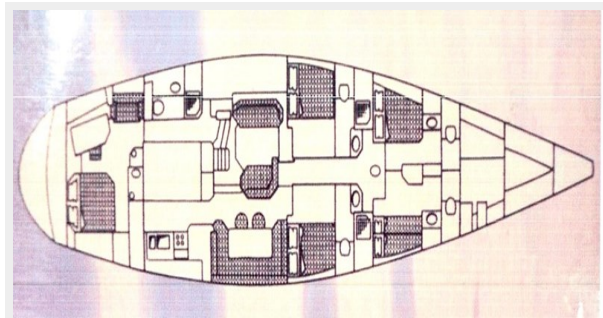
MS Harborfest



In Slings. FSS Belfast



Layout



CONTACTS

Andrey Shestakov, leading yacht broker of the sales department of Shestakov Yacht Sales Inc. Shestakov Yacht Sales Inc., the official representative of the Miami/Fort Lauderdale FL headquarters.

Contact details

Email: andrey@shestakovyachtsales.com

Web: shestakovyachtsales.com/en/

Telephones

USA: +1(954)274-4435

Office hours

Monday – Saturday: **9:00 - 21:00** EDT

Sunday: **closed**

Address



Harbour Towne Marina, 850 NE 3rd St,
STE 213, Dania, FL 33004