

MARLINA II — PERSHING



Builder: PERSHING

Year Built: 2000

Model: Motor Yacht

Price: PRICE ON APPLICATION

Location: Greece

LOA: 39' 1" (11.91mm)

Beam: 11.9

Max Draft: 6' 3" (1.9mm)

Cruise Speed: 24 Knots Kts. (28 MPH)

Max Speed: 29 Knots Kts. (33 MPH)

Our experienced yacht broker, Andrey Shestakov, will help you choose and buy a yacht that best suits your needs **Marlina II — PERSHING** from **our catalogue**. Presently, at **Shestakov Yacht Sales Inc.**, we have a wide variety of yachts available on **our sale's list**. We also work in close contact with all the big **yacht manufacturers** from all over the world.

If you would like to buy a yacht **Marlina II — PERSHING** or would like help answering any questions concerning purchasing, selling or chartering a yacht, please call **+1(954)274-4435**

TABLE OF CONTENTS

TABLE OF CONTENTS	2
SPECIFICATIONS	4
Overview	4
Basic Information	4
Dimensions	4
Speed, Capacities and Weight	4
Accommodations	5
Hull and Deck Information	5
Engine Information	5
PHOTOS	6
Pershing392000-1624432464_1624432501_32513_5161f20	6
Pershing392000-1624432464_1624432513_32524_4a89c93	6
Pershing392000-1624432464_1624432773_32784_b8a0cc5	6
Pershing392000-1624432464_1624432842_32856_5e9311d	6
Pershing392000-1624432464_1624432856_32866_5874682	7
Pershing392000-1624432464_1624432802_32811_6daf913	7
Pershing392000-1624432464_1624432784_32801_f8c8347	7
Pershing392000-1624432464_1624432822_32842_503f186	7
Pershing392000-1624432464_1624432676_32736_172b5c2	8
Pershing392000-1624432464_1624433394_33405_c9b96fd	8
Pershing392000-1624432464_1624432525_32609_6a83edc	8
Pershing392000-1624432464_1624432737_32772_95737f2	8
Pershing392000-1624432464_1624433320_33340_3d95298	9
Pershing392000-1624432464_1624433275_33305_9cd3c0c	9
Pershing392000-1624432464_1624433341_33351_618737b	9
Pershing392000-1624432464_1624433351_33366_914afff	9
Pershing392000-1624432464_1624433305_33319_30b9c16	9
Pershing392000-1624432464_1624433367_33379_506689f	9

Pershing392000-1624432464_1624432646_32662_79707e3	10
Pershing392000-1624432464_1624433379_33393_59357ec	10
Pershing392000-1624432464_1624432663_32675_afe3cb6	10
Pershing392000-1624432464_1624432635_32646_6854f86	10
Pershing392000-1624432464_1624432610_32634_47d79fc	11
CONTACTS	12
Contact details	12
Telephones	12
Office hours	12
Address	12

SPECIFICATIONS

Overview

VAT paid - Bow Thruster - Generator

She is on excellent condition, always used as private yacht with no charter history and with only 2 owners, final owner since 2006. **Full serviced by authorised engineers.**

Key Features:

- New Hydraulic Passarelle (2021)
- New Cockpit Cushions (2021)
- New Bilge Pumps (2021)
- Generator Mase 5kw
- Tender Arimar with Yamaha 8hp
- Air Condition

Please contact us for more information

Basic Information

Category: Motor Yacht

Sub Category: Motorsailor

Model Year: 2000

Year Built: 2000

Country: Greece

Dimensions

LOA: 39' 1" (11.91mm)

Beam: 11.9

Max Draft: 6' 3" (1.9mm)

Speed, Capacities and Weight

Cruise Speed: 24 Knots Kts. (28 MPH) **Max Speed:** 29 Knots Kts. (33 MPH)

Fuel Capacity: 900 Gal Gallons

Accommodations

Total Cabins: 2

Total Berths: 4

Sleeps: 4

Total Heads: 1

Hull and Deck Information

Hull Material: GRP

Engine Information

Engines: 2

Manufacturer: Caterpillar

Engine Type: Inboard

Fuel Type: Diesel

PHOTOS

Pershing392000-
1624432464_1624432501_32513_5161f20 **Pershing392000-**
1624432464_1624432513_32524_4a89c93



Pershing392000-
1624432464_1624432773_32784_b8a0cc5
Pershing392000-
1624432464_1624432842_32856_5e9311d



**Pershing392000-
1624432464_1624432856_32866_5874682 1624432464_1624432802_32811_6daf913**



**Pershing392000-
1624432464_1624432822_32842_503f186**



**Pershing392000-
1624432464_1624432784_32801_f8c8347**



Pershing392000-
1624432464_1624432676_32736_172b5c2



Pershing392000-
1624432464_1624433394_33405_c9b96fd



Pershing392000-
1624432464_1624432525_32609_6a83edc **Pershing392000-**
1624432464_1624432737_32772_95737f2



Pershing392000-1624432464_1624433320_33340_3d95298 **Pershing392000-1624432464_1624433275_33305_9cd3c0c**



Pershing392000-1624432464_1624433341_33351_618737b **Pershing392000-1624432464_1624433351_33366_914aff**



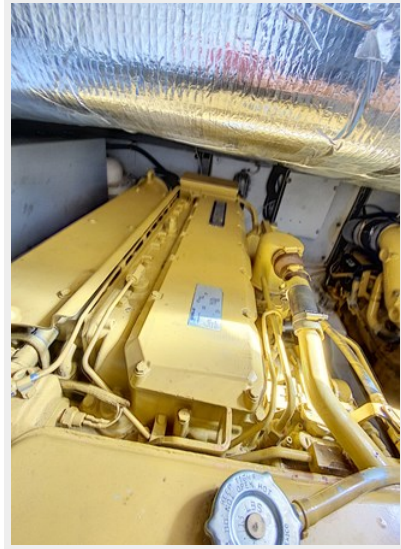
Pershing392000-1624432464_1624433305_33319_30b9c16 **Pershing392000-1624432464_1624433367_33379_506689f**



**Pershing392000-
1624432464_1624433379_33393_59357ec**



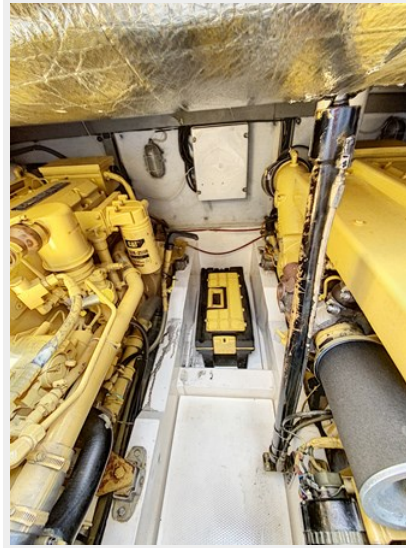
**Pershing392000-
1624432464_1624432646_32662_79707e3**



**Pershing392000-
1624432464_1624432663_32675_afe3cb6** **Pershing392000-
1624432464_1624432635_32646_6854f86**



Pershing392000-1624432464_1624432610_32634_47d79fc



CONTACTS

Andrey Shestakov, leading yacht broker of the sales department of Shestakov Yacht Sales Inc. Shestakov Yacht Sales Inc., the official representative of the Miami/Fort Lauderdale FL headquarters.

Contact details

Email: **andrey@shestakovyachtsales.com**

Web: shestakovyachtsales.com/en/

Telephones

USA: **+1(954)274-4435**

Office hours

Monday – Saturday: **9:00 - 21:00 EDT**

Sunday: **closed**

Address



Harbour Towne Marina, 850 NE 3rd St, STE 213, Dania, FL 33004