

ALVA — PRINCESS VIKING



Builder: PRINCESS VIKING

Year Built: 1998

Model: Motor Yacht

Price: PRICE ON APPLICATION

Location: United States

LOA: 50' (15.24mm)

Beam: 14.16

Max Draft: 3' 9" (1.14mm)

Cruise Speed: 17 Knots Kts. (20 MPH)

Max Speed: 24 Knots Kts. (28 MPH)

Our experienced yacht broker, Andrey Shestakov, will help you choose and buy a yacht that best suits your needs **Alva — PRINCESS VIKING** from **our catalogue**. Presently, at **Shestakov Yacht Sales Inc.**, we have a wide variety of yachts available on **our sale's list**. We also work in close contact with all the big **yacht manufacturers** from all over the world.

If you would like to buy a yacht **Alva — PRINCESS VIKING** or would like help answering any questions concerning purchasing, selling or chartering a yacht, please call **+1(954)274-4435**

TABLE OF CONTENTS

TABLE OF CONTENTS	2
SPECIFICATIONS	5
Overview	5
Basic Information	5
Dimensions	5
Speed, Capacities and Weight	5
Accommodations	5
Hull and Deck Information	6
Engine Information	6
PHOTOS	7
2	7
3	7
4	7
5	7
6	7
7	7
8	8
9	8
10	8
11	8
12	8
13	8
14	9
15	9
16	9
17	9
18	9
19	9

20	10
21	10
22	10
23	10
24	10
25	10
26	11
27	11
28	11
29	11
30	11
31	11
32	12
33	12
34	12
35	12
36	12
37	12
38	13
39	13
40	13
41	13
42	13
43	13
44	14
45	14
46	14
47	14
48	14

49	14
50	15
51	15
52	15
53	15
54	15
55	15
56	16
57	16
58	16
59	16
60	16
61	16
62	17
63	17
64	17
65	17
66	17
67	17
68	18
CONTACTS	19
Contact details	19
Telephones	19
Office hours	19
Address	19

SPECIFICATIONS

Overview

Alva is a very clean, well equipped vessel, ready for cruising. It has had many upgrades with the current owner and is ready to go. She has **twin 3208TA Caterpillar** engines, along with a bow thruster. Alva is a two stateroom, and two head vessel with plenty of room for guests.

Please check out the **FULL SPECS** for more details.

Please call for a showing today.

Basic Information

Category: Motor Yacht

Sub Category: Cockpit

Model Year: 1998

Year Built: 1998

Country: United States

Dimensions

LOA: 50' (15.24mm)

Beam: 14.16

Max Draft: 3' 9" (1.14mm)

Speed, Capacities and Weight

Cruise Speed: 17 Knots Kts. (20 MPH) **Max Speed:** 24 Knots Kts. (28 MPH)

Water Capacity: 187 Gallons

Holding Tank: 58 Gal Gallons

Fuel Capacity: 228 Gal Gallons

Accommodations

Total Cabins: 2

Total Heads: 2

Hull and Deck Information

Hull Material: Fiberglass

Deck Material: Fiberglass

Engine Information

Engines: 2

Manufacturer: Caterpillar

Engine Type: Inboard

Fuel Type: Diesel

PHOTOS

2



3



4



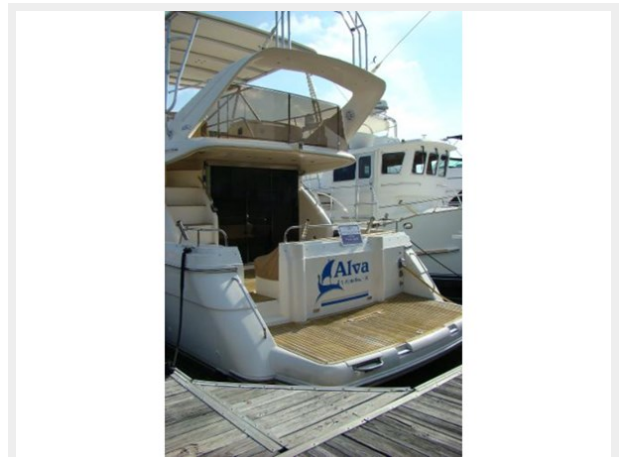
5



6



7



8



9



10



11



12



13



14



15



16



17



18



19



20



21



22



23



24



25



26



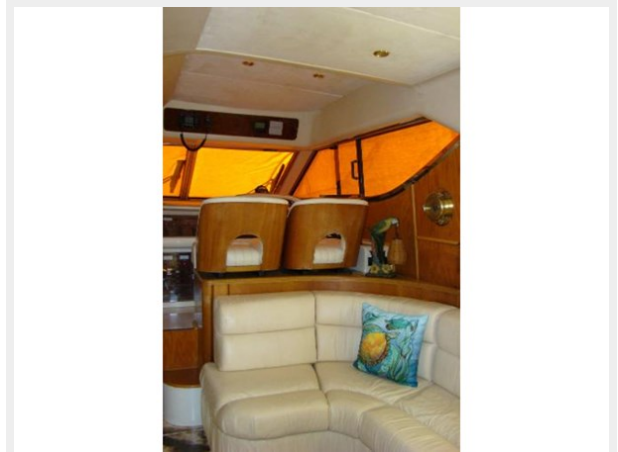
27



28



29



30



31



32



33



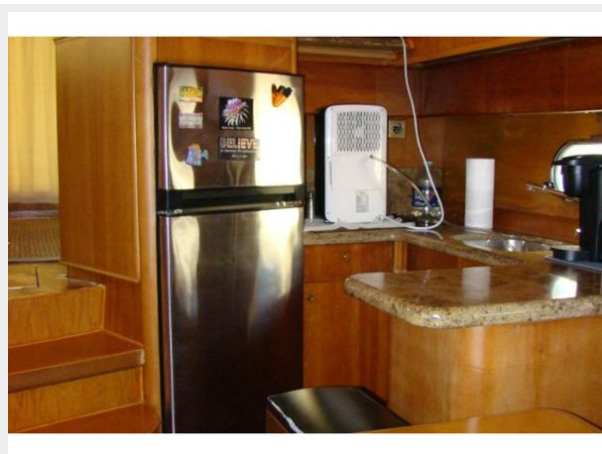
34



35



36



37



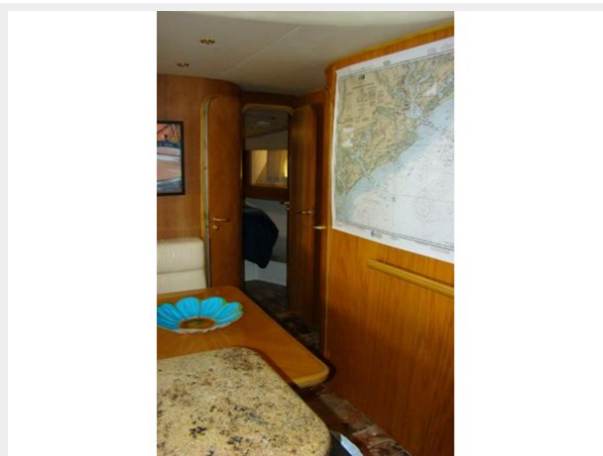
38



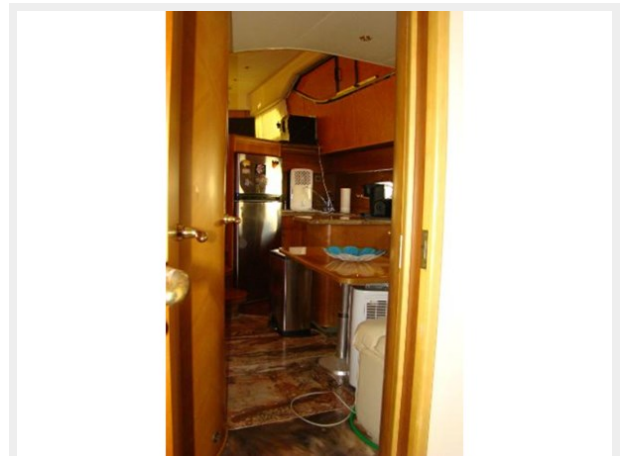
39



40



41



42



43



44



45



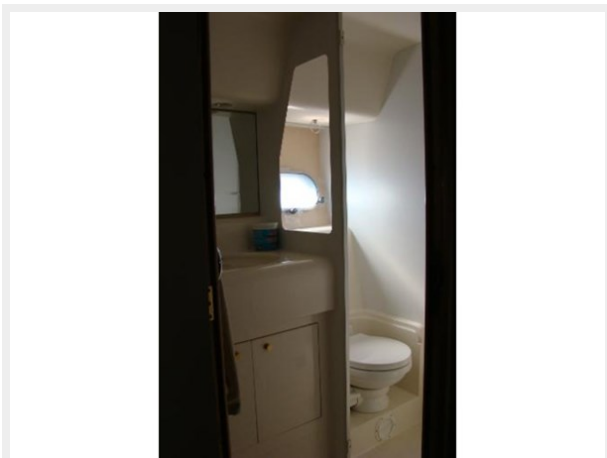
46



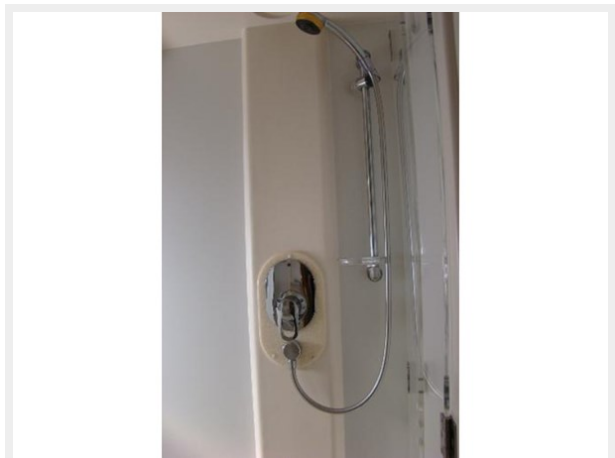
47



48



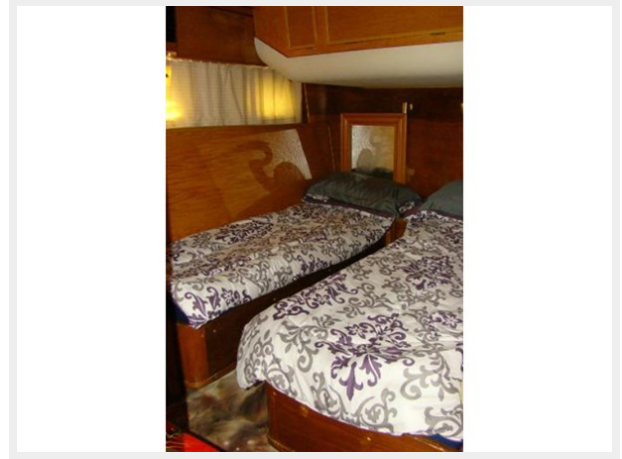
49



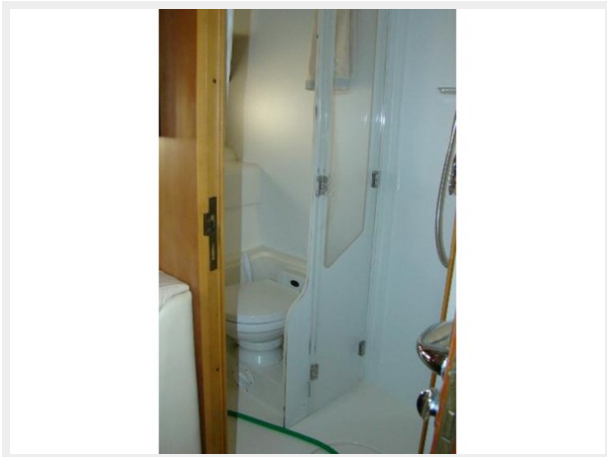
50



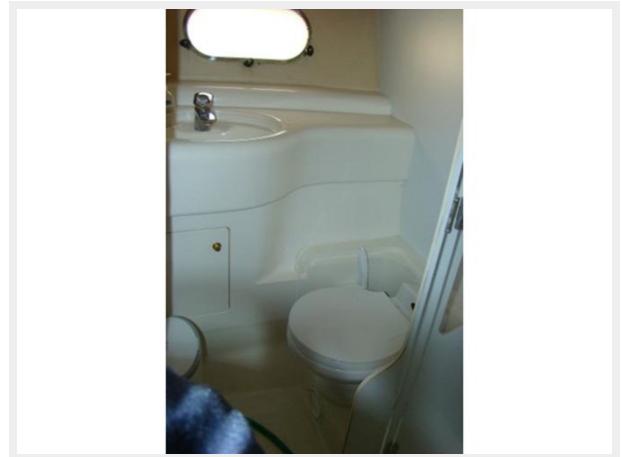
51



52



53



54



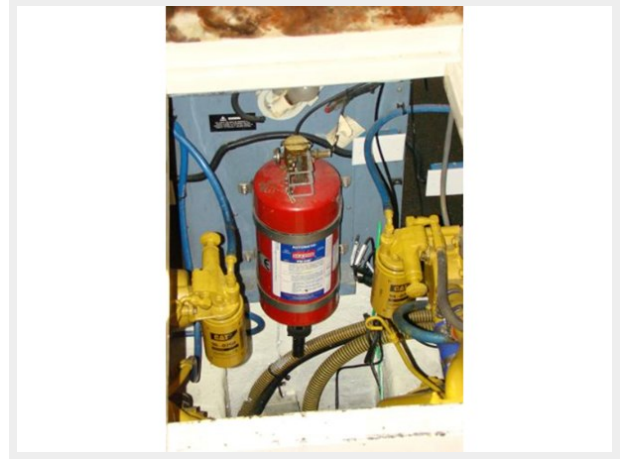
55



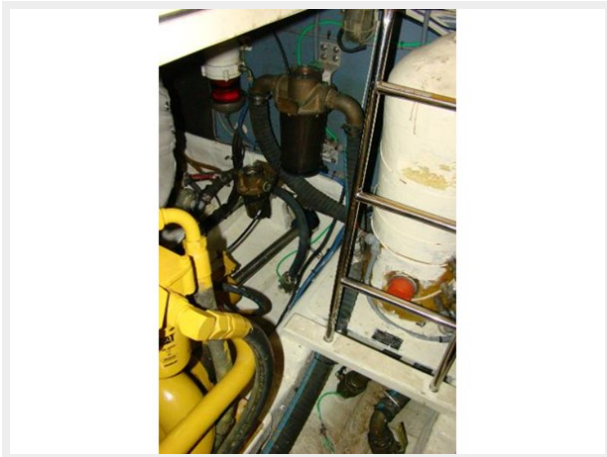
56



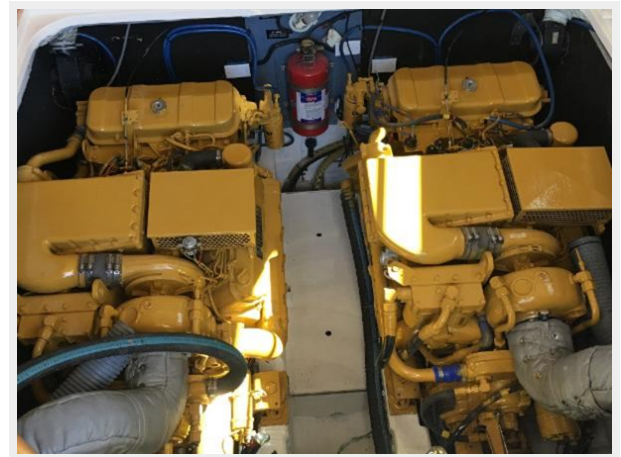
57



58



59



60



61



62



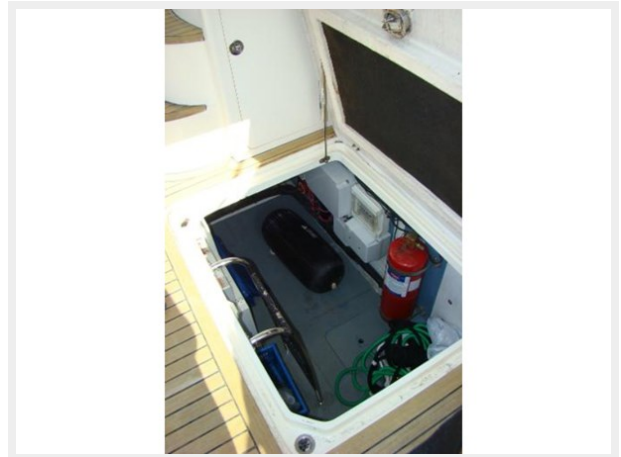
63



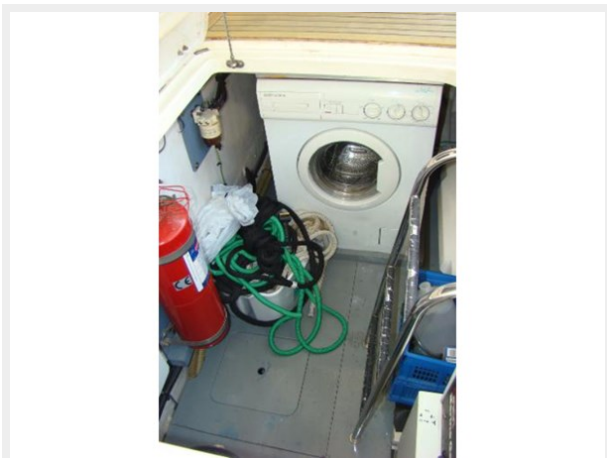
64



65



66



67



68



CONTACTS

Andrey Shestakov, leading yacht broker of the sales department of Shestakov Yacht Sales Inc. Shestakov Yacht Sales Inc., the official representative of the Miami/Fort Lauderdale FL headquarters.

Contact details

Email: **andrey@shestakovyachtsales.com**

Web: shestakovyachtsales.com/en/

Telephones

USA: **+1(954)274-4435**

Office hours

Monday – Saturday: **9:00 - 21:00** EDT

Sunday: **closed**

Address



Harbour Towne Marina, 850 NE 3rd St, STE 213, Dania, FL 33004