

## OBSESSION — HATTERAS



**Builder:** HATTERAS

**Year Built:** 2012

**Model:** Motor Yacht

**Price:** PRICE ON APPLICATION

**LOA:** 80' (24.38mm)

**Beam:** 21.25

**Min Draft:** 5' 7" (1.7mm)

**Max Draft:** 5' 9" (1.75mm)

**Cruise Speed:** 20 Knots Kts. (23 MPH)

**Max Speed:** 24 Knots Kts. (28 MPH)

Our experienced yacht broker, Andrey Shestakov, will help you choose and buy a yacht that best suits your needs **OBSESSION — HATTERAS** from **our catalogue**. Presently, at **Shestakov Yacht Sales Inc.**, we have a wide variety of yachts available on **our sale's list**. We also work in close contact with all the big **yacht manufacturers** from all over the world.

If you would like to buy a yacht **OBSESSION — HATTERAS** or would like help answering any questions concerning purchasing, selling or chartering a yacht, please call **+1(954)274-4435**

# TABLE OF CONTENTS

|                                     |    |
|-------------------------------------|----|
| TABLE OF CONTENTS                   | 2  |
| SPECIFICATIONS                      | 6  |
| Basic Information                   | 6  |
| Dimensions                          | 6  |
| Speed, Capacities and Weight        | 6  |
| Accommodations                      | 6  |
| Hull and Deck Information           | 6  |
| Engine Information                  | 7  |
| PHOTOS                              | 8  |
| Salon Looking Forward               | 8  |
| Salon to Port Forward               | 8  |
| Salon Looking Port Aft              | 8  |
| Salon Starboard Side Bar            | 8  |
| Dining Salon                        | 8  |
| Dining to Port                      | 8  |
| Dining Looking Aft                  | 9  |
| Portside Dining Salon               | 9  |
| Day Head                            | 9  |
| Galley                              | 9  |
| Galley Looking Aft                  | 9  |
| Galley Looking Forward              | 9  |
| Galley Looking to Starboard         | 10 |
| Country Kitchen Dining              | 10 |
| Country Kitchen Dining to Starboard | 10 |
| Galley Pilothouse Steps             | 10 |
| Helm Area                           | 10 |
| Raised Seating Behind Helm          | 10 |
| Pilothouse Starboard Side Seating   | 11 |

---

|                                 |    |
|---------------------------------|----|
| Pilothouse to Starboard         | 11 |
| Pilothouse Bar                  | 11 |
| Boat Deck Entrance              | 11 |
| Master Looking Aft              | 11 |
| Master to Port                  | 11 |
| Master to Starboard             | 12 |
| Portside Master                 | 12 |
| Master Looking Forward          | 12 |
| His Head                        | 12 |
| Shower                          | 12 |
| His Head                        | 12 |
| Shower                          | 13 |
| Her Head                        | 13 |
| Portside VIP Looking Aft        | 13 |
| Portside VIP Looking Forward    | 13 |
| Portside VIP Shower             | 14 |
| Portside VIP Head               | 14 |
| Starboard Guest Looking Aft     | 14 |
| Starboard Guest Looking Forward | 14 |
| Forward Laundry                 | 15 |
| Starboard Guest Head            | 15 |
| Bow VIP Looking Forward         | 15 |
| Bow VIP Looking to Port         | 15 |
| Bow VIP Looking Aft             | 15 |
| Bow VIP Head                    | 15 |
| Bow VIP Shower                  | 16 |
| Crew Cabin                      | 16 |
| Captain's Cabin                 | 16 |
| Captain's Cabin                 | 16 |

---

|                                       |    |
|---------------------------------------|----|
| Crew Head                             | 17 |
| Crew Shower                           | 17 |
| Crew Area Aft                         | 17 |
| Aft Deck                              | 17 |
| Aft Deck                              | 18 |
| Aft Deck to Port                      | 18 |
| Boat Deck Steps                       | 18 |
| Crew Entrance                         | 18 |
| Boat Deck Lounge Aft                  | 18 |
| Boat Deck Looking Forward             | 18 |
| Boat Deck Looking Aft                 | 19 |
| Fixed Seating                         | 19 |
| Coach Roof Ladder and Engine Controls | 19 |
| Coach Roof Equipment                  | 19 |
| Engine Room Entrance                  | 19 |
| Engine Room Looking Forward           | 19 |
| Starboard Engine                      | 20 |
| Port Engine                           | 20 |
| View from Above                       | 20 |
| Bow Quarter View                      | 20 |
| Stern Shot                            | 20 |
| Stern Quarter View                    | 20 |
| Bow Quarter View                      | 20 |
| Alternate Profile                     | 20 |
| Alternate Profile                     | 21 |
| Alternate Profile                     | 21 |
| Under Cover Stored till Sold          | 21 |
| CONTACTS                              | 22 |
| Contact details                       | 22 |

---

|              |    |
|--------------|----|
| Telephones   | 22 |
| Office hours | 22 |
| Address      | 22 |

---

# SPECIFICATIONS

---

## Basic Information

---

**Category:** Motor Yacht

**Sub Category:** Enclosed Bridge

**Model Year:** 2012

**Year Built:** 2012

## Dimensions

---

**LOA:** 80' (24.38mm)

**Beam:** 21.25

**Min Draft:** 5' 7" (1.7mm)

**Max Draft:** 5' 9" (1.75mm)

## Speed, Capacities and Weight

---

**Cruise Speed:** 20 Knots Kts. (23 MPH) **Max Speed:** 24 Knots Kts. (28 MPH)

**Gross Tonnage:** 95 Pounds

**Water Capacity:** 326 Gallons

**Holding Tank:** 388 Gal Gallons

**Fuel Capacity:** 2858 Gal Gallons

## Accommodations

---

**Total Cabins:** 4

**Sleeps:** 8

**Total Heads:** 5

**Crew Berths:** 3

## Hull and Deck Information

---

**Hull Material:** Fiberglass

**Deck Material:** Teak

**Hull Configuration:** Modified V-Hull

---

## Engine Information

---

**Engines:** 2

**Manufacturer:** CAT

**Engine Type:** Inboard

**Fuel Type:** Diesel



# PHOTOS

**Salon Looking Forward**



**Salon to Port Forward**



**Salon Looking Port Aft**



**Salon Starboard Side Bar**



**Dining Salon**



**Dining to Port**





**Dining Looking Aft**



**Portside Dining Salon**



**Day Head**



**Galley**



**Galley Looking Aft**



**Galley Looking Forward**



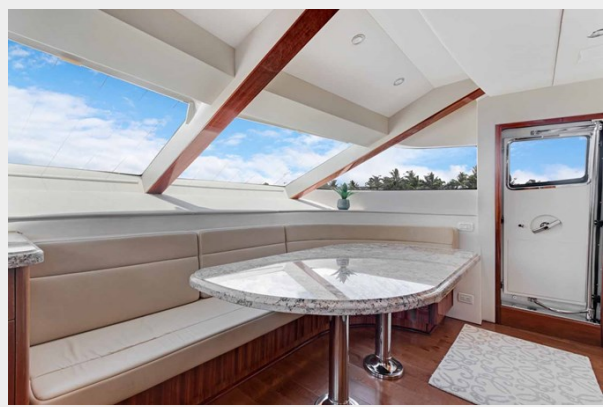
**Galley Looking to Starboard**



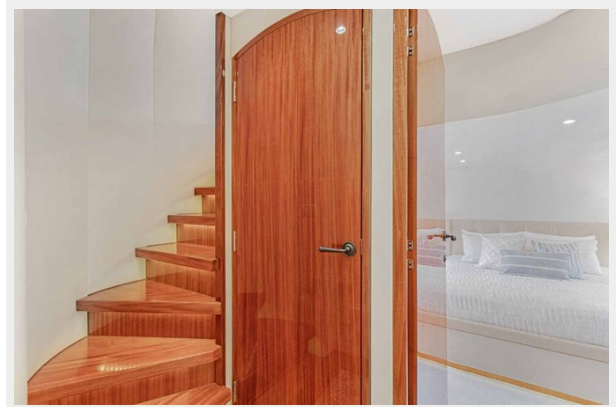
**Country Kitchen Dining**



**Country Kitchen Dining to Starboard**



**Galley Pilothouse Steps**



**Helm Area**



**Raised Seating Behind Helm**





**Pilothouse Starboard Side Seating**



**Pilothouse to Starboard**



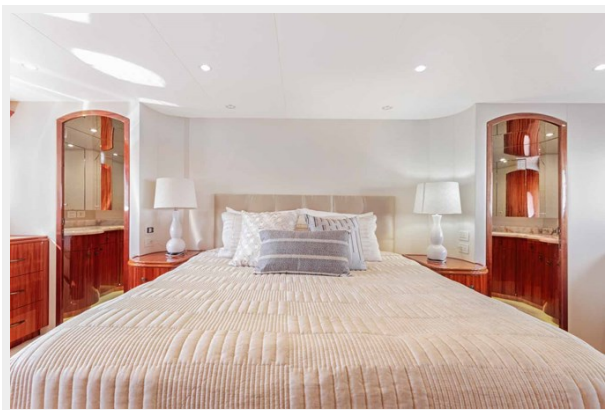
**Pilothouse Bar**



**Boat Deck Entrance**



**Master Looking Aft**



**Master to Port**



**Master to Starboard**



**Portside Master**



**Master Looking Forward**



**His Head**



**His Head**

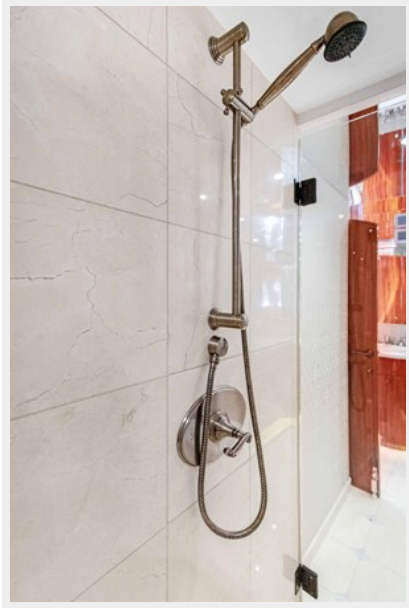


**Shower**





**Shower**



**Her Head**



**Portside VIP Looking Aft**



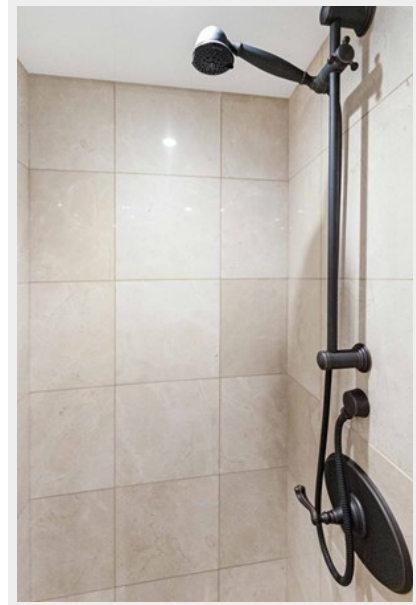
**Portside VIP Looking Forward**



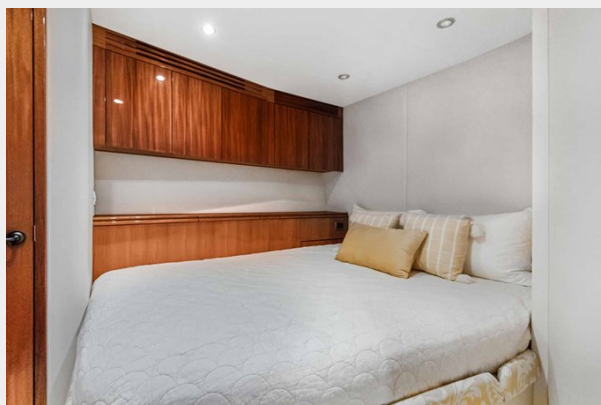
**Portside VIP Head**



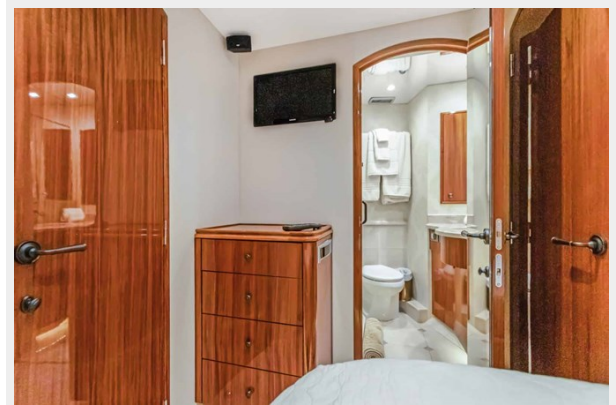
**Portside VIP Shower**



**Starboard Guest Looking Aft**



**Starboard Guest Looking Forward**





**Starboard Guest Head**



**Forward Laundry**



**Bow VIP Looking Forward**



**Bow VIP Looking to Port**



**Bow VIP Looking Aft**



**Bow VIP Head**





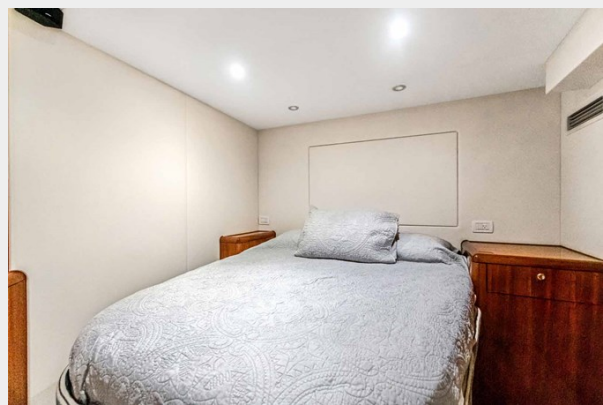
### Bow VIP Shower



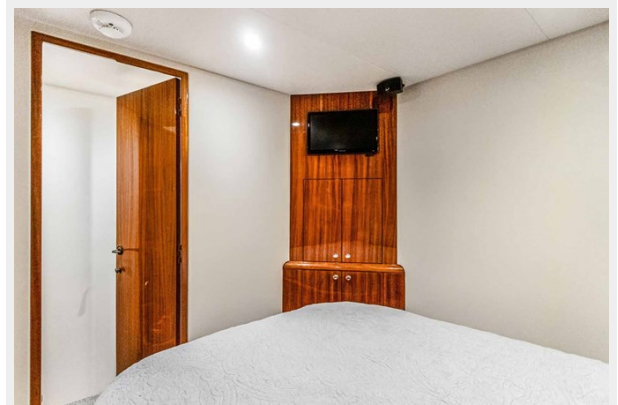
### Crew Cabin



### Captain's Cabin



### Captain's Cabin



**Crew Head**



**Crew Shower**



**Crew Area Aft**



**Aft Deck**





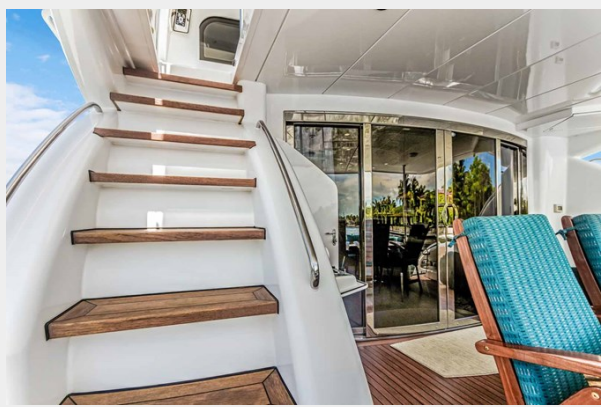
**Aft Deck**



**Aft Deck to Port**



**Boat Deck Steps**



**Crew Entrance**



**Boat Deck Lounge Aft**



**Boat Deck Looking Forward**





**Boat Deck Looking Aft**



**Fixed Seating**



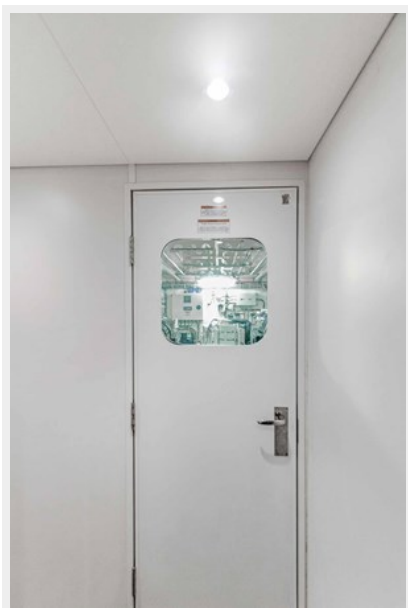
**Coach Roof Ladder and Engine Controls**



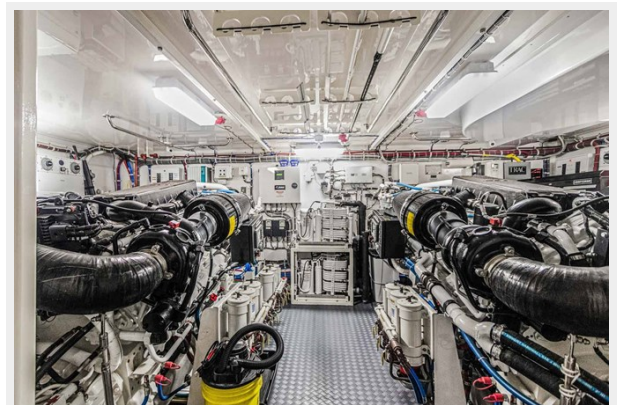
**Coach Roof Equipment**



**Engine Room Entrance**

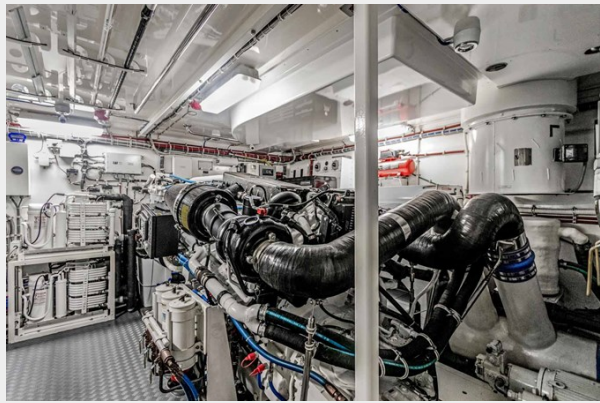


**Engine Room Looking Forward**





**Starboard Engine**



**Port Engine**



**View from Above**



**Bow Quarter View**



**Stern Shot**



**Stern Quarter View**



**Bow Quarter View**



**Alternate Profile**





**Alternate Profile**



**Alternate Profile**



**Under Cover Stored till Sold**



# CONTACTS

---

Andrey Shestakov, leading yacht broker of the sales department of Shestakov Yacht Sales Inc. Shestakov Yacht Sales Inc., the official representative of the Miami/Fort Lauderdale FL headquarters.

## Contact details

---

Email: **andrey@shestakovyachtsales.com**

Web: [shestakovyachtsales.com/en/](https://shestakovyachtsales.com/en/)

## Telephones

---

USA: **+1(954)274-4435**

## Office hours

---

Monday – Saturday: **9:00 - 21:00** EDT

Sunday: **closed**

## Address

---



Harbour Towne Marina, 850 NE 3rd St, STE 213, Dania, FL 33004