

# INVINCIBLE — PRINCESS YACHTS



**Судостроитель:** PRINCESS YACHTS

**Год постройки:** 2014

**Модель:** Моторная яхта

**Цена:** ЦЕНА ЯХТЫ ПО ЗАПРОСУ

**Длина общая:** 63' 5" (19.33mm)

**Ширина:** 16.41

**Макс. осадка:** 4' 6" (1.37mm)

**Крейс. скорость:** 26 Knots Kts. (30 MPH)

**Макс. скорость:** 34.5 Knots Kts. (40 MPH)

Купить **Invincible — PRINCESS YACHTS** а также выбрать подходящую вам яхту из нашего **каталога яхт** вам поможет опытный яхтенный брокер Андрей Шестаков. На сегодняшний день компания **Shestakov Yacht Sales Inc.** имеет большое количество яхт в **собственном списке продаж**, а также тесно сотрудничает со всеми крупными **яхтенными производителями** по всему миру.

Для того чтобы купить яхту **Invincible — PRINCESS YACHTS** а также проконсультироваться по любому вопросу связанному с покупкой, продажей, чартером яхт позвоните по телефону **+7(918)465-66-44**.

# ОГЛАВЛЕНИЕ

ОГЛАВЛЕНИЕ	2
ХАРАКТЕРИСТИКИ	14
Обзор	14
Основная информация	15
Размеры	15
Скорость, вместимость и масса	15
Размещение	15
Корпус и палуба	15
Информация о двигателе	16
ФОТОГРАФИИ	17
62_princess_invincible_profiles3	17
62_princess_invincible_profiles2	17
62_princess_invincible_profiles14	17
62_princess_invincible_profiles13	17
62_princess_invincible_profiles12	17
62_princess_invincible_profiles11	17
62_princess_invincible_profiles10	18
62_princess_invincible_profiles1	18
62_princess_invincible_master_stateroom9	18
62_princess_invincible_master_stateroom8	18
62_princess_invincible_master_stateroom7	18
62_princess_invincible_master_stateroom5	18
62_princess_invincible_master_stateroom4	19
62_princess_invincible_master_stateroom3	19
62_princess_invincible_master_stateroom2	19
62_princess_invincible_master_stateroom1	19
62_princess_invincible_master_head2	19
62_princess_invincible_master_head1	19

62_princess_invincible_lower_salon7	20
62_princess_invincible_lower_salon6	20
62_princess_invincible_lower_salon4	20
62_princess_invincible_lower_salon5	20
62_princess_invincible_lower_salon2	21
62_princess_invincible_lower_salon1	21
62_princess_invincible_helm3	21
62_princess_invincible_helm4	21
62_princess_invincible_helm2	21
62_princess_invincible_helm1	21
62_princess_invincible_guest_stateroom4	22
62_princess_invincible_guest_stateroom3	22
62_princess_invincible_guest_stateroom2	22
62_princess_invincible_guest_stateroom1	22
62_princess_invincible_guest_head2	22
62_princess_invincible_guest_head1	22
62_princess_invincible_profiles4	23
62_princess_invincible_master_stateroom6	23
62_princess_invincible_lower_salon3	23
62_princess_invincible_garage2	23
62_princess_invincible_forward_stateroom3	23
62_princess_invincible_bow6	23
62_princess_invincible_aft_deck2	24
62_princess_invincible_garage1	24
62_princess_invincible_galley7	24
62_princess_invincible_galley8	24
62_princess_invincible_galley6	24
62_princess_invincible_galley5	24
62_princess_invincible_galley3	25

62_princess_invincible_galley4	25
62_princess_invincible_galley1	25
62_princess_invincible_galley2	25
62_princess_invincible_forward_stateroom6	25
62_princess_invincible_forward_stateroom5	25
62_princess_invincible_forward_stateroom4	26
62_princess_invincible_forward_stateroom2	26
62_princess_invincible_forward_stateroom1	26
62_princess_invincible_engine_room7	26
62_princess_invincible_engine_room6	26
62_princess_invincible_engine_room5	26
62_princess_invincible_engine_room4	27
62_princess_invincible_engine_room3	27
62_princess_invincible_engine_room2	27
62_princess_invincible_engine_room1	27
62_princess_invincible_bow8	27
62_princess_invincible_bow9	27
62_princess_invincible_bow7	28
62_princess_invincible_bow5	28
62_princess_invincible_bow4	28
62_princess_invincible_bow3	28
62_princess_invincible_bow1	28
62_princess_invincible_bow2	28
62_princess_invincible_aft_deck9	29
62_princess_invincible_aft_deck8	29
62_princess_invincible_aft_deck7	29
62_princess_invincible_aft_deck6	29
62_princess_invincible_aft_deck5	29
62_princess_invincible_aft_deck4	29

62_princess_invincible_aft_deck3	30
62_princess_invincible_aft_deck11	30
62_princess_invincible_aft_deck10	30
62_princess_invincible_aft_deck1	30
62_princess_invincible_aerial9	30
62_princess_invincible_aerial8	30
62_princess_invincible_aerial7	30
62_princess_invincible_aerial6	30
62_princess_invincible_aerial5	31
62_princess_invincible_aerial4	31
62_princess_invincible_aerial3	31
62_princess_invincible_aerial2	31
62_princess_invincible_aerial1	31
62_princess_invincible_swim_platform4	31
62_princess_invincible_swim_platform3	31
62_princess_invincible_swim_platform2	31
62_princess_invincible_swim_platform1	32
62_princess_invincible_salon9	32
62_princess_invincible_salon8	32
62_princess_invincible_salon7	32
62_princess_invincible_salon6	32
62_princess_invincible_salon5	32
62_princess_invincible_salon4	33
62_princess_invincible_salon3	33
62_princess_invincible_salon2	33
62_princess_invincible_salon11	33
62_princess_invincible_salon10	33
62_princess_invincible_salon1	33
62_princess_invincible_profiles9	34

62_princess_invincible_profiles8	34
62_princess_invincible_profiles7	34
62_princess_invincible_profiles6	34
62_princess_invincible_profiles3	34
62_princess_invincible_profiles5	34
62_princess_invincible_profiles2	35
62_princess_invincible_profiles14	35
62_princess_invincible_profiles13	35
62_princess_invincible_profiles12	35
62_princess_invincible_profiles11	35
62_princess_invincible_profiles10	35
62_princess_invincible_master_stateroom9	36
62_princess_invincible_profiles1	36
62_princess_invincible_master_stateroom8	36
62_princess_invincible_master_stateroom7	36
62_princess_invincible_master_stateroom5	36
62_princess_invincible_master_stateroom4	36
62_princess_invincible_master_stateroom2	37
62_princess_invincible_master_stateroom3	37
62_princess_invincible_master_head2	37
62_princess_invincible_master_stateroom1	37
62_princess_invincible_master_head1	38
62_princess_invincible_lower_salon7	38
62_princess_invincible_lower_salon6	38
62_princess_invincible_lower_salon5	38
62_princess_invincible_lower_salon4	38
62_princess_invincible_lower_salon2	38
62_princess_invincible_lower_salon1	39
62_princess_invincible_helm4	39

62_princess_invincible_helm3	39
62_princess_invincible_helm2	39
62_princess_invincible_helm1	39
62_princess_invincible_guest_stateroom4	39
62_princess_invincible_guest_stateroom2	40
62_princess_invincible_guest_stateroom3	40
62_princess_invincible_guest_head2	40
62_princess_invincible_guest_stateroom1	40
62_princess_invincible_guest_head1	41
62_princess_invincible_profiles4	41
62_princess_invincible_lower_salon3	41
62_princess_invincible_master_stateroom6	41
62_princess_invincible_garage2	41
62_princess_invincible_forward_stateroom3	41
62_princess_invincible_bow6	42
62_princess_invincible_aft_deck2	42
62_princess_invincible_garage1	42
62_princess_invincible_galley8	42
62_princess_invincible_galley7	42
62_princess_invincible_galley6	42
62_princess_invincible_galley5	43
62_princess_invincible_galley4	43
62_princess_invincible_galley3	43
62_princess_invincible_galley2	43
62_princess_invincible_galley1	44
62_princess_invincible_forward_stateroom6	44
62_princess_invincible_forward_stateroom4	44
62_princess_invincible_forward_stateroom5	44
62_princess_invincible_forward_stateroom2	45

62_princess_invincible_forward_stateroom1	45
62_princess_invincible_engine_room6	45
62_princess_invincible_engine_room7	45
62_princess_invincible_engine_room5	45
62_princess_invincible_engine_room4	45
62_princess_invincible_engine_room3	46
62_princess_invincible_engine_room2	46
62_princess_invincible_engine_room1	46
62_princess_invincible_bow9	46
62_princess_invincible_bow8	46
62_princess_invincible_bow7	46
62_princess_invincible_bow5	47
62_princess_invincible_bow4	47
62_princess_invincible_bow3	47
62_princess_invincible_bow2	47
62_princess_invincible_bow1	47
62_princess_invincible_aft_deck9	47
62_princess_invincible_aft_deck7	48
62_princess_invincible_aft_deck8	48
62_princess_invincible_aft_deck6	48
62_princess_invincible_aft_deck5	48
62_princess_invincible_aft_deck4	48
62_princess_invincible_aft_deck3	48
62_princess_invincible_aft_deck11	49
62_princess_invincible_aft_deck10	49
62_princess_invincible_aft_deck1	49
62_princess_invincible_aerial9	49
62_princess_invincible_aerial8	49
62_princess_invincible_aerial7	49



62_princess_invincible_aerial6	49
62_princess_invincible_aerial5	49
62_princess_invincible_aerial4	50
62_princess_invincible_aerial3	50
62_princess_invincible_aerial2	50
62_princess_invincible_aerial1	50
62_princess_invincible_swim_platform4	50
62_princess_invincible_swim_platform3	50
62_princess_invincible_swim_platform2	50
62_princess_invincible_swim_platform1	50
62_princess_invincible_salon8	51
62_princess_invincible_salon9	51
62_princess_invincible_salon6	51
62_princess_invincible_salon7	51
62_princess_invincible_salon5	51
62_princess_invincible_salon4	51
62_princess_invincible_salon2	52
62_princess_invincible_salon3	52
62_princess_invincible_salon11	52
62_princess_invincible_salon10	52
62_princess_invincible_salon1	52
62_princess_invincible_profiles9	52
62_princess_invincible_profiles8	53
62_princess_invincible_profiles7	53
62_princess_invincible_profiles6	53
62_princess_invincible_profiles5	53
62_princess_invincible_profiles3	53
62_princess_invincible_profiles2	53
62_princess_invincible_profiles14	54

62_princess_invincible_profiles13	54
62_princess_invincible_profiles12	54
62_princess_invincible_profiles11	54
62_princess_invincible_profiles10	54
62_princess_invincible_profiles1	54
62_princess_invincible_master_stateroom9	55
62_princess_invincible_master_stateroom8	55
62_princess_invincible_master_stateroom7	55
62_princess_invincible_master_stateroom5	55
62_princess_invincible_master_stateroom4	55
62_princess_invincible_master_stateroom3	55
62_princess_invincible_master_stateroom2	56
62_princess_invincible_master_stateroom1	56
62_princess_invincible_master_head2	56
62_princess_invincible_master_head1	56
62_princess_invincible_lower_salon7	57
62_princess_invincible_lower_salon6	57
62_princess_invincible_lower_salon4	57
62_princess_invincible_lower_salon5	57
62_princess_invincible_lower_salon2	58
62_princess_invincible_lower_salon1	58
62_princess_invincible_helm3	58
62_princess_invincible_helm4	58
62_princess_invincible_helm2	58
62_princess_invincible_helm1	58
62_princess_invincible_guest_stateroom4	59
62_princess_invincible_guest_stateroom3	59
62_princess_invincible_guest_stateroom2	59
62_princess_invincible_guest_stateroom1	59

62_princess_invincible_guest_head2	59
62_princess_invincible_guest_head1	59
62_princess_invincible_profiles4	60
62_princess_invincible_master_stateroom6	60
62_princess_invincible_lower_salon3	60
62_princess_invincible_garage2	60
62_princess_invincible_forward_stateroom3	60
62_princess_invincible_bow6	60
62_princess_invincible_aft_deck2	61
62_princess_invincible_garage1	61
62_princess_invincible_galley7	61
62_princess_invincible_galley8	61
62_princess_invincible_galley6	61
62_princess_invincible_galley5	61
62_princess_invincible_galley3	62
62_princess_invincible_galley4	62
62_princess_invincible_galley1	62
62_princess_invincible_galley2	62
62_princess_invincible_forward_stateroom6	62
62_princess_invincible_forward_stateroom5	62
62_princess_invincible_forward_stateroom4	63
62_princess_invincible_forward_stateroom2	63
62_princess_invincible_forward_stateroom1	63
62_princess_invincible_engine_room7	63
62_princess_invincible_engine_room6	63
62_princess_invincible_engine_room5	63
62_princess_invincible_engine_room4	64
62_princess_invincible_engine_room3	64
62_princess_invincible_engine_room2	64

62_princess_invincible_engine_room1	64
62_princess_invincible_bow8	64
62_princess_invincible_bow9	64
62_princess_invincible_bow7	65
62_princess_invincible_bow5	65
62_princess_invincible_bow4	65
62_princess_invincible_bow3	65
62_princess_invincible_bow1	65
62_princess_invincible_bow2	65
62_princess_invincible_aft_deck9	66
62_princess_invincible_aft_deck8	66
62_princess_invincible_aft_deck7	66
62_princess_invincible_aft_deck6	66
62_princess_invincible_aft_deck5	66
62_princess_invincible_aft_deck4	66
62_princess_invincible_aft_deck3	67
62_princess_invincible_aft_deck11	67
62_princess_invincible_aft_deck10	67
62_princess_invincible_aft_deck1	67
62_princess_invincible_aerial9	67
62_princess_invincible_aerial8	67
62_princess_invincible_aerial7	67
62_princess_invincible_aerial6	67
62_princess_invincible_aerial5	68
62_princess_invincible_aerial4	68
62_princess_invincible_aerial3	68
62_princess_invincible_aerial2	68
62_princess_invincible_aerial1	68
62_princess_invincible_swim_platform4	68

---

62_princess_invincible_swim_platform3	68
62_princess_invincible_swim_platform2	68
62_princess_invincible_swim_platform1	69
62_princess_invincible_salon9	69
62_princess_invincible_salon8	69
КОНТАКТЫ	70
Контактная информация	70
Телефоны	70
Время работы	70
Адрес	70

# ХАРАКТЕРИСТИКИ

---

## Обзор

---

One word comes to mind for this yacht when I step aboard... Pristine. That's what she is in pretty much every way. Princess Yachts is one of the elite builders in the European production yacht realm with an outstanding reputation, world class quality and excellent service department here in the USA. The V62 series from Princess is an excellent layout affording a ton of space even in places you would least expect and delivers an exhilarating performance that's hard to beat when you are taking about a yacht with ultra sought after CAT c18s, straight shaft drives and just 900 hours. The exterior arrangements are second to none in her class. She's rigged and ready to go with no apologies. This is a must see and will not last long in todays market place. Call, text or email and schedule your appoint and obtain more information about this stunning Princess V62 aptly named "INVINCIBLE".

### Notable Features and Upgrades:

- 2nd Owner
- US Electrical system 120V/60hz throughout with Duplex outlets
- Central vacuum system
- Generator upgrade to 17.5 KW/60 HZ
- Impressive and very upgraded underwater and exterior lighting package
- Bow and stern thrusters
- Satin walnut interior millwork pacakage
- Hydraulic swim platform
- Tender Garage
- 2020 Williams Turbojet Jet Tender
- Garmin electronics
- Massive sunroof
- (3) Stateroom (2) Head layout
- Passarell
- SAT TV
- Teak decks in excellent condition
- Cushions in excellent condition
- Upgrade Fusion sound system
- Smart TVs
- Grill
- Washer/dryer combo
- LED lighting throughout
- Deep freeze in the engine room
- CAT Power (C18s - 900 hours)
- Upgraded 8000 series Garmin
- Electric retractable aft awning
- Bi-sliding glass aft salon doors

### Recent Work:

- Bow thruster props (2021)
- Updated radar (2021)

- Oil and fluid change (2021)
- Props reconditioned and balanced (2020)
- Retractable blinds added on sunroof skylights (2020)
- New batteries (2020)
- New exterior cushions (2020)
- Chaise style lounges on foredeck (2020)
- Jetski chocks on swim platform (2019)
  
- Trickle charger added in garage for the tender (2019)
  
- Ceramic Tint on all windows (2019)

## Основная информация

---

**Тип судна:** Моторная яхта

**Модельный год:** 2014

**Год постройки:** 2014

## Размеры

---

**Длина общая:** 63' 5" (19.33mm)

**Ширина:** 16.41

**Макс. осадка:** 4' 6" (1.37mm)

## Скорость, вместимость и масса

---

**Крейс. скорость:** 26 Knots Kts. (30 MPH)

**Макс. скорость:** 34.5 Knots Kts. (40 MPH)

**Вместимость воды:** 110 Gallons

**Объем топливного бака:** 750 Gal  
Gallons

## Размещение

---

**Всего кают:** 4

## Корпус и палуба

---

**Материал корпуса:** Fiberglass

## Информация о двигателе

---

**Двигатели:** 2

**Производитель:** CAT

**Тип двигателя:** Inboard

**Тип топлива:** Diesel



# ФОТОГРАФИИ

62\_princess\_invincible\_profiles3



62\_princess\_invincible\_profiles2



62\_princess\_invincible\_profiles14



62\_princess\_invincible\_profiles13



62\_princess\_invincible\_profiles12



62\_princess\_invincible\_profiles11



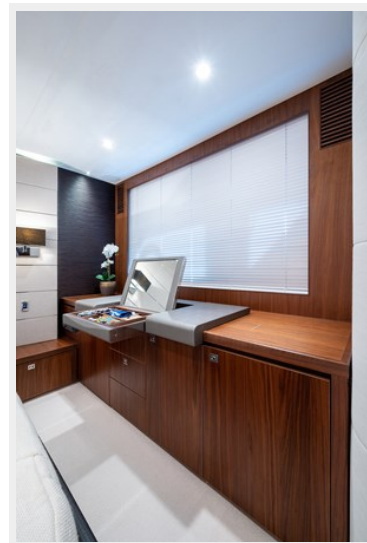
62\_princess\_invincible\_profiles10



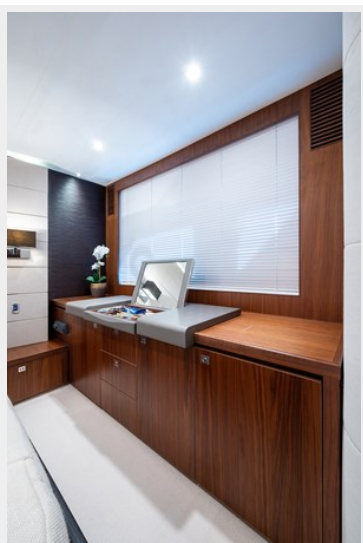
62\_princess\_invincible\_profiles1



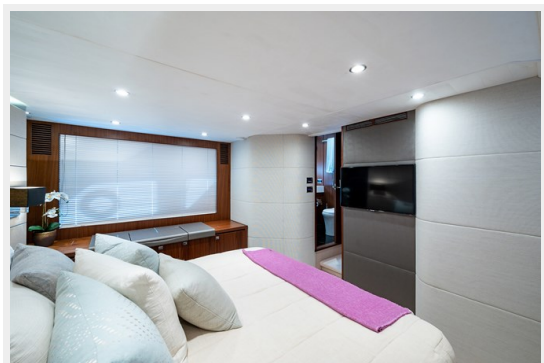
62\_princess\_invincible\_master\_stateroom9 62\_princess\_invincible\_master\_stateroom8



62\_princess\_invincible\_master\_stateroom7



62\_princess\_invincible\_master\_stateroom5



62\_princess\_invincible\_master\_stateroom4 62\_princess\_invincible\_master\_stateroom3



62\_princess\_invincible\_master\_stateroom2



62\_princess\_invincible\_master\_stateroom1



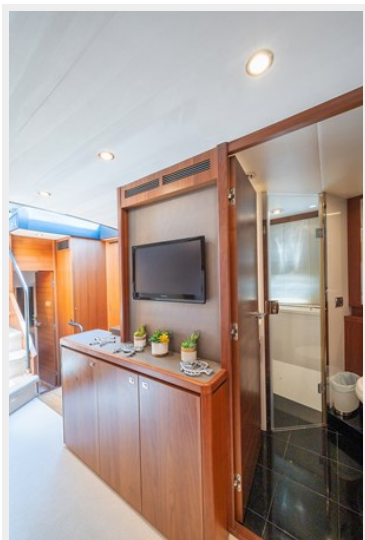
62\_princess\_invincible\_master\_head2



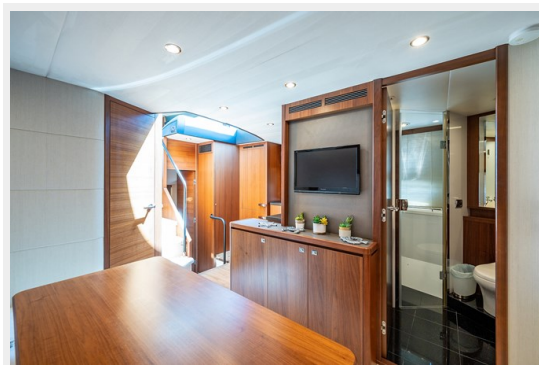
62\_princess\_invincible\_master\_head1



62\_princess\_invincible\_lower\_salon7



62\_princess\_invincible\_lower\_salon6



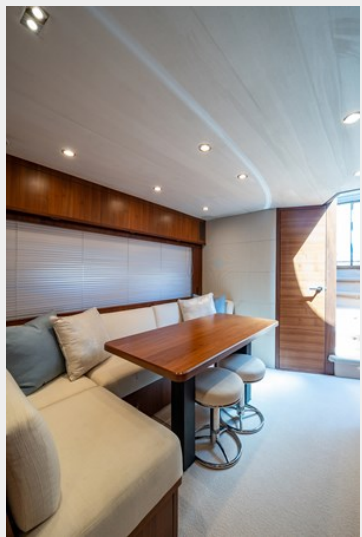
62\_princess\_invincible\_lower\_salon4



62\_princess\_invincible\_lower\_salon5



62\_princess\_invincible\_lower\_salon2



62\_princess\_invincible\_lower\_salon1



62\_princess\_invincible\_helm3



62\_princess\_invincible\_helm4



62\_princess\_invincible\_helm2



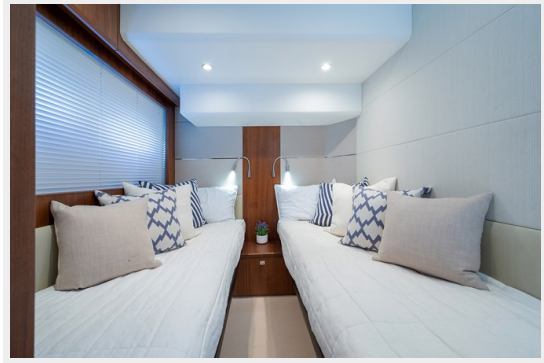
62\_princess\_invincible\_helm1



62\_princess\_invincible\_guest\_stateroom4



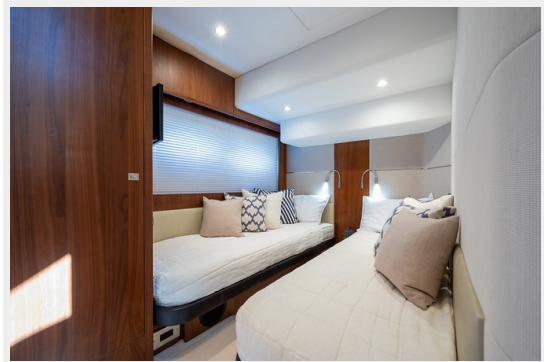
62\_princess\_invincible\_guest\_stateroom3



62\_princess\_invincible\_guest\_stateroom2



62\_princess\_invincible\_guest\_stateroom1



62\_princess\_invincible\_guest\_head2



62\_princess\_invincible\_guest\_head1



62\_princess\_invincible\_profiles4



62\_princess\_invincible\_master\_stateroom6



62\_princess\_invincible\_lower\_salon3



62\_princess\_invincible\_garage2



62\_princess\_invincible\_forward\_stateroom3



62\_princess\_invincible\_bow6



62\_princess\_invincible\_aft\_deck2



62\_princess\_invincible\_garage1



62\_princess\_invincible\_galley8



62\_princess\_invincible\_galley7



62\_princess\_invincible\_galley6



62\_princess\_invincible\_galley5





62\_princess\_invincible\_galley3



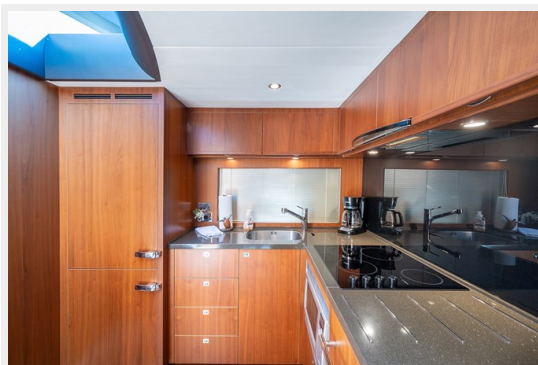
62\_princess\_invincible\_galley4



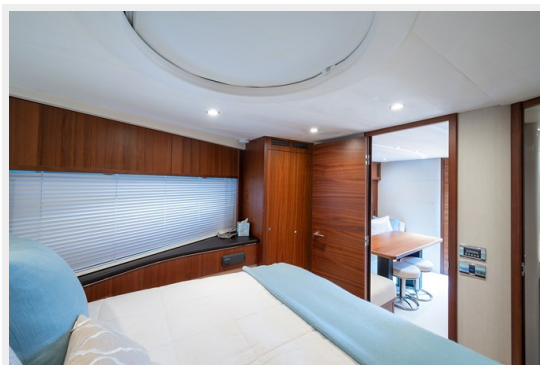
62\_princess\_invincible\_galley1



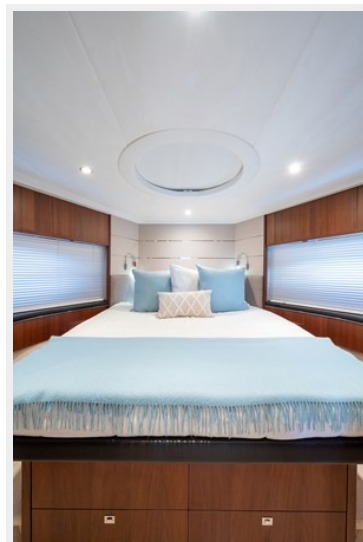
62\_princess\_invincible\_galley2



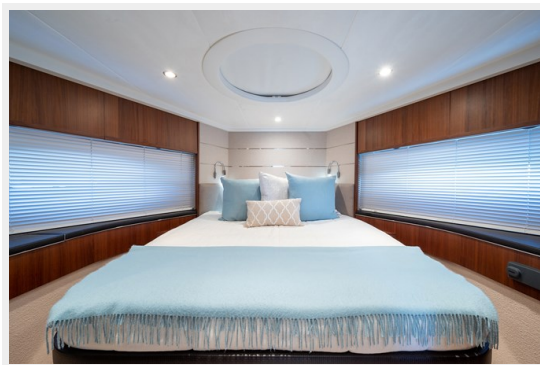
62\_princess\_invincible\_forward\_stateroom6 62\_princess\_invincible\_forward\_stateroom5



62\_princess\_invincible\_forward\_stateroom4 62\_princess\_invincible\_forward\_stateroom2



62\_princess\_invincible\_forward\_stateroom1



62\_princess\_invincible\_engine\_room7



62\_princess\_invincible\_engine\_room6



62\_princess\_invincible\_engine\_room5



62\_princess\_invincible\_engine\_room4



62\_princess\_invincible\_engine\_room3



62\_princess\_invincible\_engine\_room2



62\_princess\_invincible\_engine\_room1



62\_princess\_invincible\_bow8



62\_princess\_invincible\_bow9



**62\_princess\_invincible\_bow7**



**62\_princess\_invincible\_bow5**



**62\_princess\_invincible\_bow4**



**62\_princess\_invincible\_bow3**



**62\_princess\_invincible\_bow2**



**62\_princess\_invincible\_bow1**



62\_princess\_invincible\_aft\_deck9



62\_princess\_invincible\_aft\_deck8



62\_princess\_invincible\_aft\_deck7



62\_princess\_invincible\_aft\_deck6



62\_princess\_invincible\_aft\_deck5



62\_princess\_invincible\_aft\_deck4



62\_princess\_invincible\_aft\_deck3



62\_princess\_invincible\_aft\_deck11



62\_princess\_invincible\_aft\_deck10



62\_princess\_invincible\_aft\_deck1



62\_princess\_invincible\_aerial9



62\_princess\_invincible\_aerial8



62\_princess\_invincible\_aerial7



62\_princess\_invincible\_aerial6



62\_princess\_invincible\_aerial5



62\_princess\_invincible\_aerial4



62\_princess\_invincible\_aerial3



62\_princess\_invincible\_aerial2



62\_princess\_invincible\_aerial1



62\_princess\_invincible\_swim\_platform4



62\_princess\_invincible\_swim\_platform3



62\_princess\_invincible\_swim\_platform2



62\_princess\_invincible\_swim\_platform1



62\_princess\_invincible\_salon9



62\_princess\_invincible\_salon8



62\_princess\_invincible\_salon7



62\_princess\_invincible\_salon6



62\_princess\_invincible\_salon5





62\_princess\_invincible\_salon4



62\_princess\_invincible\_salon3



62\_princess\_invincible\_salon2



62\_princess\_invincible\_salon11



62\_princess\_invincible\_salon10



62\_princess\_invincible\_salon1



62\_princess\_invincible\_profiles9



62\_princess\_invincible\_profiles8



62\_princess\_invincible\_profiles7



62\_princess\_invincible\_profiles6



62\_princess\_invincible\_profiles3



62\_princess\_invincible\_profiles5



62\_princess\_invincible\_profiles2



62\_princess\_invincible\_profiles14



62\_princess\_invincible\_profiles13



62\_princess\_invincible\_profiles12



62\_princess\_invincible\_profiles11



62\_princess\_invincible\_profiles10

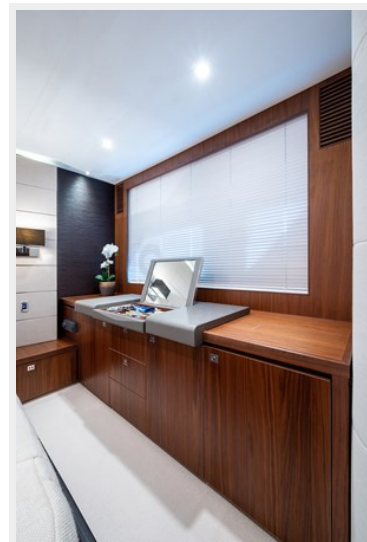
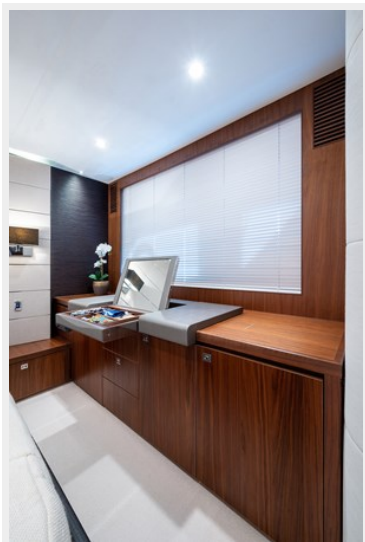


62\_princess\_invincible\_master\_stateroom9

62\_princess\_invincible\_profiles1



62\_princess\_invincible\_master\_stateroom8 62\_princess\_invincible\_master\_stateroom7

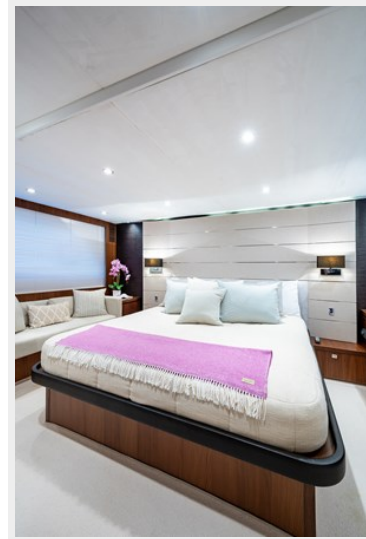


62\_princess\_invincible\_master\_stateroom5 62\_princess\_invincible\_master\_stateroom4



62\_princess\_invincible\_master\_stateroom2

62\_princess\_invincible\_master\_stateroom3



62\_princess\_invincible\_master\_head2

62\_princess\_invincible\_master\_stateroom1



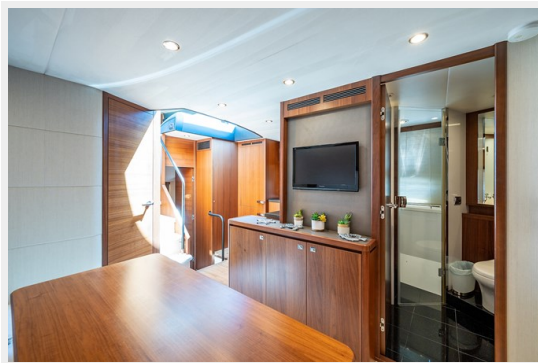
62\_princess\_invincible\_master\_head1



62\_princess\_invincible\_lower\_saloon7



62\_princess\_invincible\_lower\_saloon6



62\_princess\_invincible\_lower\_saloon5



62\_princess\_invincible\_lower\_saloon4



62\_princess\_invincible\_lower\_saloon2



62\_princess\_invincible\_lower\_saloon1



62\_princess\_invincible\_helm4



62\_princess\_invincible\_helm3



62\_princess\_invincible\_helm2



62\_princess\_invincible\_helm1



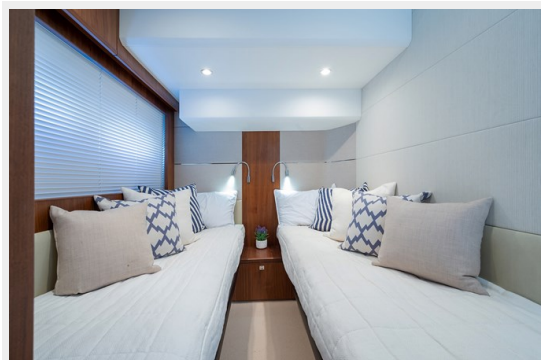
62\_princess\_invincible\_guest\_stateroom4



62\_princess\_invincible\_guest\_stateroom2



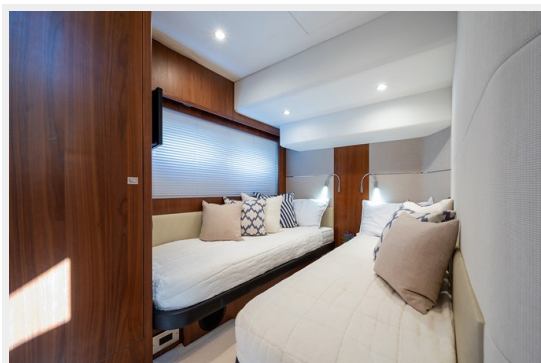
62\_princess\_invincible\_guest\_stateroom3



62\_princess\_invincible\_guest\_head2



62\_princess\_invincible\_guest\_stateroom1





62\_princess\_invincible\_guest\_head1



62\_princess\_invincible\_profiles4



62\_princess\_invincible\_lower\_saloon3



62\_princess\_invincible\_master\_stateroom6



62\_princess\_invincible\_garage2



62\_princess\_invincible\_forward\_stateroom3



62\_princess\_invincible\_bow6



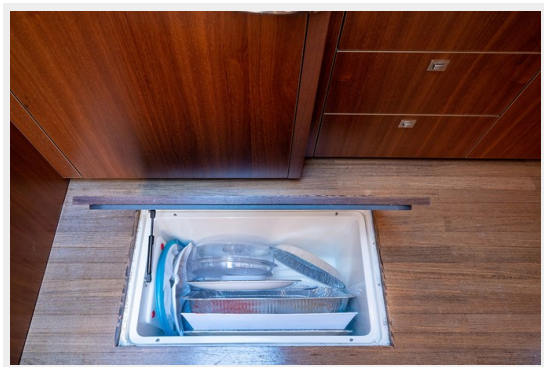
62\_princess\_invincible\_aft\_deck2



62\_princess\_invincible\_garage1



62\_princess\_invincible\_galley8



62\_princess\_invincible\_galley7



62\_princess\_invincible\_galley6



62\_princess\_invincible\_galley5



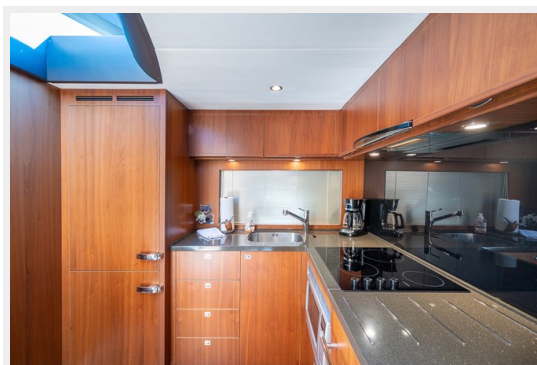
62\_princess\_invincible\_galley4



62\_princess\_invincible\_galley3



62\_princess\_invincible\_galley2



62\_princess\_invincible\_galley1

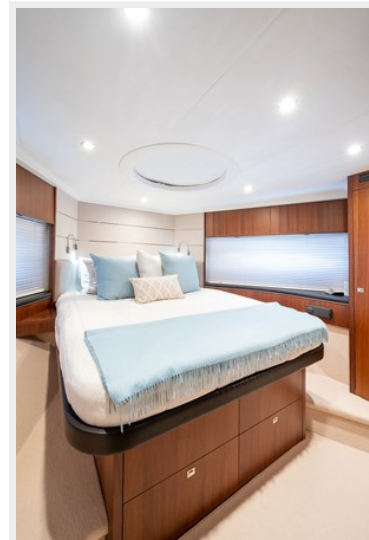


62\_princess\_invincible\_forward\_stateroom6

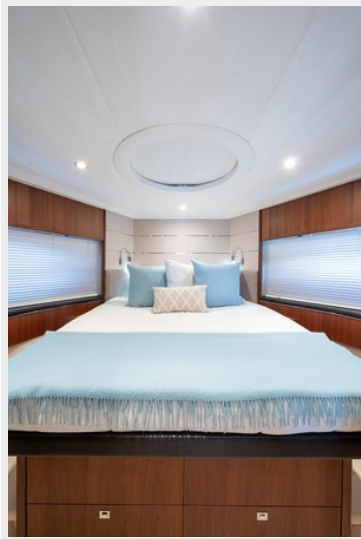


62\_princess\_invincible\_forward\_stateroom4

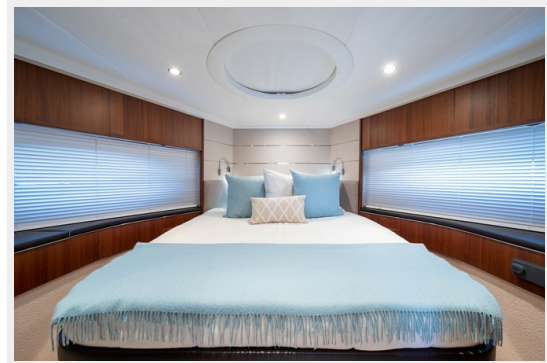
62\_princess\_invincible\_forward\_stateroom5



62\_princess\_invincible\_forward\_stateroom2



62\_princess\_invincible\_forward\_stateroom1



62\_princess\_invincible\_engine\_room6



62\_princess\_invincible\_engine\_room7



62\_princess\_invincible\_engine\_room5



62\_princess\_invincible\_engine\_room4



62\_princess\_invincible\_engine\_room3



62\_princess\_invincible\_engine\_room2



62\_princess\_invincible\_engine\_room1



62\_princess\_invincible\_bow9



62\_princess\_invincible\_bow8



62\_princess\_invincible\_bow7



62\_princess\_invincible\_bow5



62\_princess\_invincible\_bow4



62\_princess\_invincible\_bow3



62\_princess\_invincible\_bow2



62\_princess\_invincible\_bow1



62\_princess\_invincible\_aft\_deck9



62\_princess\_invincible\_aft\_deck7



62\_princess\_invincible\_aft\_deck8



62\_princess\_invincible\_aft\_deck6



62\_princess\_invincible\_aft\_deck5



62\_princess\_invincible\_aft\_deck4



62\_princess\_invincible\_aft\_deck3





62\_princess\_invincible\_aft\_deck11



62\_princess\_invincible\_aft\_deck10



62\_princess\_invincible\_aft\_deck1



62\_princess\_invincible\_aerial9



62\_princess\_invincible\_aerial8



62\_princess\_invincible\_aerial7



62\_princess\_invincible\_aerial6



62\_princess\_invincible\_aerial5



62\_princess\_invincible\_aerial4



62\_princess\_invincible\_aerial3



62\_princess\_invincible\_aerial2



62\_princess\_invincible\_aerial1



62\_princess\_invincible\_swim\_platform4



62\_princess\_invincible\_swim\_platform3



62\_princess\_invincible\_swim\_platform2



62\_princess\_invincible\_swim\_platform1



62\_princess\_invincible\_saloon9



62\_princess\_invincible\_saloon8



62\_princess\_invincible\_saloon7



62\_princess\_invincible\_saloon6



62\_princess\_invincible\_saloon5



62\_princess\_invincible\_saloon4



62\_princess\_invincible\_salon3



62\_princess\_invincible\_salon2



62\_princess\_invincible\_salon11



62\_princess\_invincible\_salon10



62\_princess\_invincible\_salon1



62\_princess\_invincible\_profiles9



**62\_princess\_invincible\_profiles8**



**62\_princess\_invincible\_profiles7**



**62\_princess\_invincible\_profiles6**



**62\_princess\_invincible\_profiles5**



**62\_princess\_invincible\_profiles3**



**62\_princess\_invincible\_profiles2**



62\_princess\_invincible\_profiles14



62\_princess\_invincible\_profiles13



62\_princess\_invincible\_profiles12



62\_princess\_invincible\_profiles11



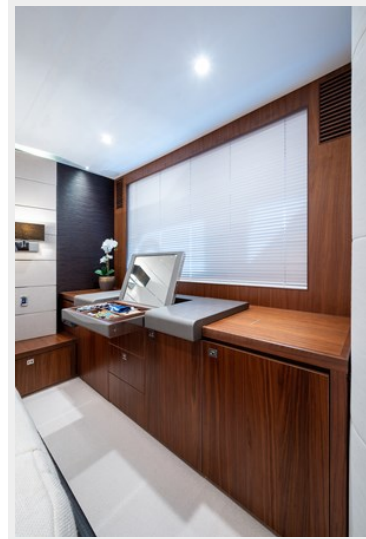
62\_princess\_invincible\_profiles10



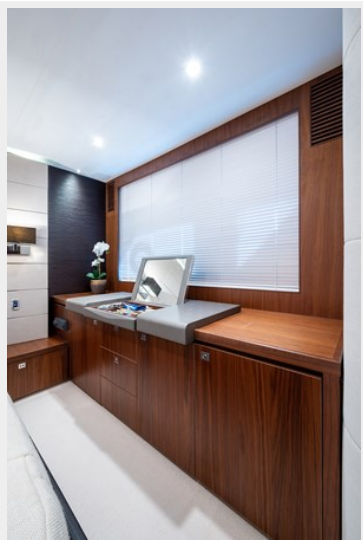
62\_princess\_invincible\_profiles1



62\_princess\_invincible\_master\_stateroom9 62\_princess\_invincible\_master\_stateroom8



62\_princess\_invincible\_master\_stateroom7



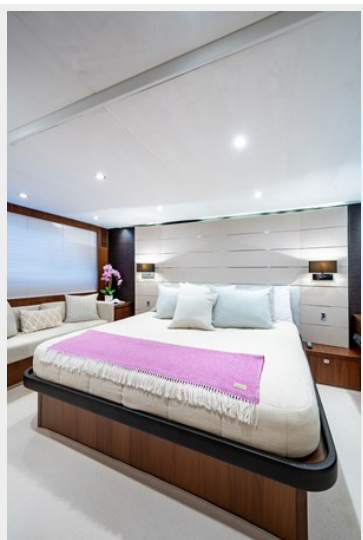
62\_princess\_invincible\_master\_stateroom5



62\_princess\_invincible\_master\_stateroom4 62\_princess\_invincible\_master\_stateroom3



62\_princess\_invincible\_master\_stateroom2



62\_princess\_invincible\_master\_stateroom1



62\_princess\_invincible\_master\_head2

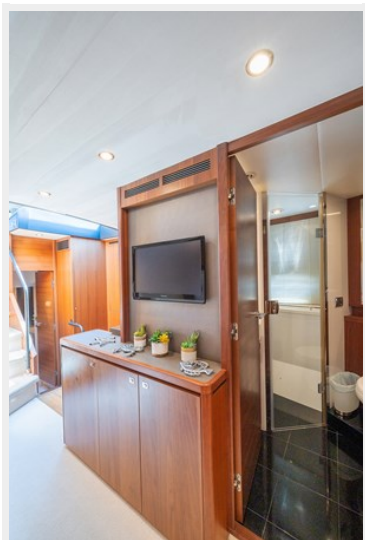


62\_princess\_invincible\_master\_head1





62\_princess\_invincible\_lower\_salon7



62\_princess\_invincible\_lower\_salon6



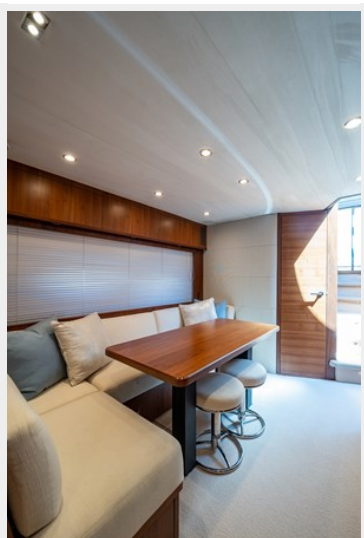
62\_princess\_invincible\_lower\_salon4



62\_princess\_invincible\_lower\_salon5



62\_princess\_invincible\_lower\_salon2



62\_princess\_invincible\_lower\_salon1



62\_princess\_invincible\_helm3



62\_princess\_invincible\_helm4



62\_princess\_invincible\_helm2



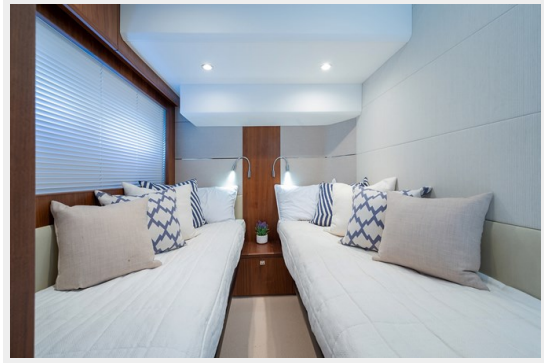
62\_princess\_invincible\_helm1



62\_princess\_invincible\_guest\_stateroom4



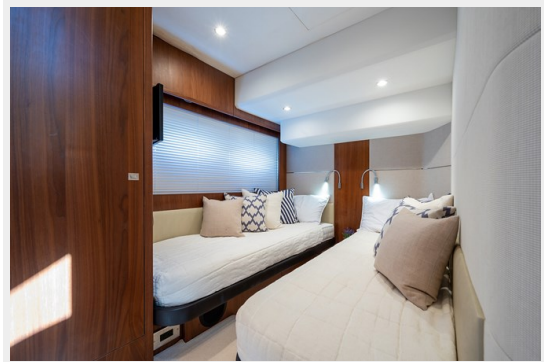
62\_princess\_invincible\_guest\_stateroom3



62\_princess\_invincible\_guest\_stateroom2



62\_princess\_invincible\_guest\_stateroom1



62\_princess\_invincible\_guest\_head2



62\_princess\_invincible\_guest\_head1



62\_princess\_invincible\_profiles4



62\_princess\_invincible\_master\_stateroom6



62\_princess\_invincible\_lower\_saloon3



62\_princess\_invincible\_garage2



62\_princess\_invincible\_forward\_stateroom3



62\_princess\_invincible\_bow6



62\_princess\_invincible\_aft\_deck2



62\_princess\_invincible\_garage1



62\_princess\_invincible\_galley8



62\_princess\_invincible\_galley7



62\_princess\_invincible\_galley6



62\_princess\_invincible\_galley5



62\_princess\_invincible\_galley3



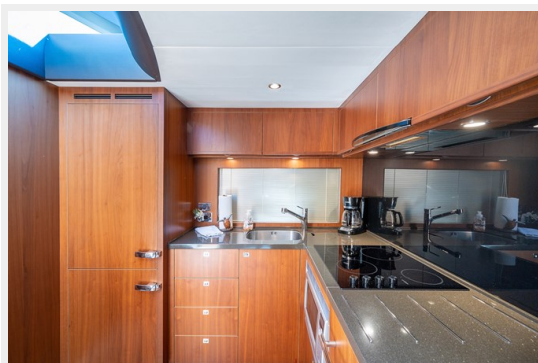
62\_princess\_invincible\_galley4



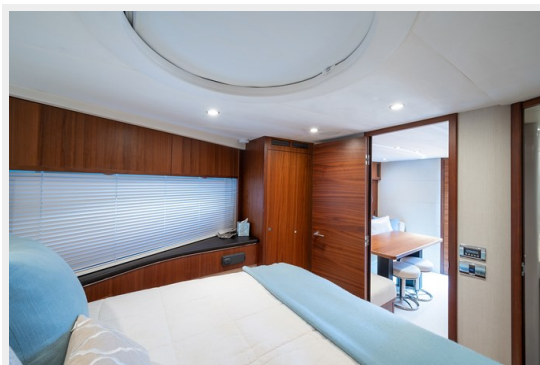
62\_princess\_invincible\_galley1



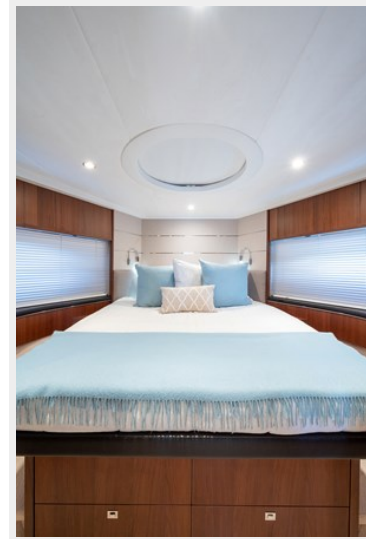
62\_princess\_invincible\_galley2



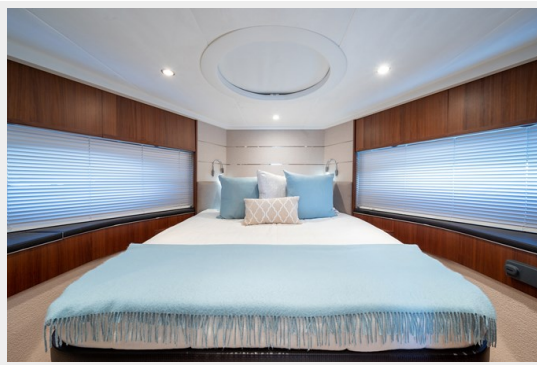
62\_princess\_invincible\_forward\_stateroom6 62\_princess\_invincible\_forward\_stateroom5



62\_princess\_invincible\_forward\_stateroom4 62\_princess\_invincible\_forward\_stateroom2



62\_princess\_invincible\_forward\_stateroom1



62\_princess\_invincible\_engine\_room7



62\_princess\_invincible\_engine\_room6



62\_princess\_invincible\_engine\_room5



62\_princess\_invincible\_engine\_room4



62\_princess\_invincible\_engine\_room3



62\_princess\_invincible\_engine\_room2



62\_princess\_invincible\_engine\_room1



62\_princess\_invincible\_bow8



62\_princess\_invincible\_bow9





**62\_princess\_invincible\_bow7**



**62\_princess\_invincible\_bow5**



**62\_princess\_invincible\_bow4**



**62\_princess\_invincible\_bow3**



**62\_princess\_invincible\_bow1**



**62\_princess\_invincible\_bow2**



62\_princess\_invincible\_aft\_deck9



62\_princess\_invincible\_aft\_deck8



62\_princess\_invincible\_aft\_deck7



62\_princess\_invincible\_aft\_deck6



62\_princess\_invincible\_aft\_deck5



62\_princess\_invincible\_aft\_deck4



62\_princess\_invincible\_aft\_deck3



62\_princess\_invincible\_aft\_deck11



62\_princess\_invincible\_aft\_deck10



62\_princess\_invincible\_aft\_deck1



62\_princess\_invincible\_aerial9



62\_princess\_invincible\_aerial8



62\_princess\_invincible\_aerial7



62\_princess\_invincible\_aerial6



62\_princess\_invincible\_aerial5



62\_princess\_invincible\_aerial4



62\_princess\_invincible\_aerial3



62\_princess\_invincible\_aerial2



62\_princess\_invincible\_aerial1



62\_princess\_invincible\_swim\_platform4



62\_princess\_invincible\_swim\_platform3



62\_princess\_invincible\_swim\_platform2



62\_princess\_invincible\_swim\_platform1



62\_princess\_invincible\_salon9



62\_princess\_invincible\_salon8



# КОНТАКТЫ

---

Андрей Шестаков (Andrey Shestakov) – ведущий яхтенный брокер отдела продаж яхт и судов компании Shestakov Yacht Sales Inc. Официальный представитель Shestakov Yacht Sales Inc. для русскоговорящих клиентов в центральном офисе компании в Майами/Форт Лодердейл/Флорида/США.

## Контактная информация

---

Email: **andrey@shestakovyachtsales.com**

Web: **[shestakovyachtsales.com](http://shestakovyachtsales.com)**

## Телефоны

---

Краснодарский край: **+7(918)465-66-44**

США, Майами, Флорида: **+1(954)274-4435**

## Время работы

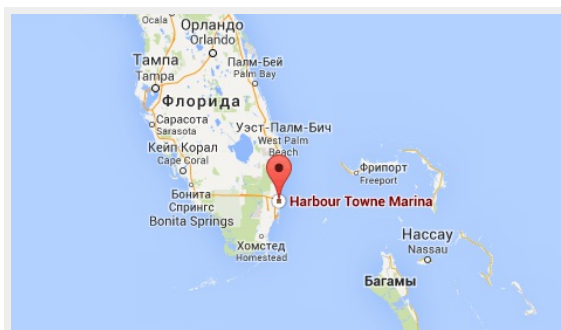
---

Понедельник – Суббота: **9:00 - 21:00 EDT**

Воскресенье: **Закрито**

## Адрес

---



Harbour Towne Marina, 850 NE 3rd St, STE 213, Dania, FL 33004