

ANDIAMO — PERSHING



Builder: PERSHING

Year Built: 2015

Model: Sport Yacht

Price: PRICE ON APPLICATION

Location: United States

LOA: 92' (28.04mm)

Beam: 20.41

Max Draft: 5' 5" (1.65mm)

Cruise Speed: 35 Knots Kts. (40 MPH)

Max Speed: 40 Knots Kts. (46 MPH)

Our experienced yacht broker, Andrey Shestakov, will help you choose and buy a yacht that best suits your needs **ANDIAMO — PERSHING** from our catalogue. Presently, at Shestakov Yacht Sales Inc., we have a wide variety of yachts available on our sale's list. We also work in close contact with all the big yacht manufacturers from all over the world.

If you would like to buy a yacht **ANDIAMO — PERSHING** or would like help answering any questions concerning purchasing, selling or chartering a yacht, please call **+1(954)274-4435**

TABLE OF CONTENTS

TABLE OF CONTENTS	2
SPECIFICATIONS	6
Overview	6
Basic Information	6
Dimensions	6
Speed, Capacities and Weight	6
Accommodations	6
Hull and Deck Information	6
Engine Information	6
PHOTOS	7
92_pershing_adiamo_starboard_guest_head2	7
92_pershing_adiamo_starboard_guest_stateroom1	7
92_pershing_adiamo_starboard_guest_stateroom2	7
92_pershing_adiamo_starboard_guest_stateroom3	7
92_pershing_adiamo_starboard_guest_stateroom4	7
92_pershing_adiamo_port_guest_head2	7
92_pershing_adiamo_port_guest_head3	8
92_pershing_adiamo_port_guest_stateroom1	8
92_pershing_adiamo_port_guest_stateroom2	8
92_pershing_adiamo_port_guest_stateroom3	8
92_pershing_adiamo_port_guest_stateroom4	8
92_pershing_adiamo_port_guest_stateroom5	8
92_pershing_adiamo_starboard_guest_head1	9
92_pershing_adiamo_master_stateroom6	9
92_pershing_adiamo_master_stateroom7	9
92_pershing_adiamo_master_stateroom8	9
92_pershing_adiamo_master_stateroom9	9
92_pershing_adiamo_master_stateroom10	9

92_pershing_adiamo_master_stateroom11	10
92_pershing_adiamo_master_stateroom12	10
92_pershing_adiamo_port_guest_head1	10
92_pershing_adiamo_master_stateroom1	10
92_pershing_adiamo_master_stateroom2	10
92_pershing_adiamo_master_stateroom3	10
92_pershing_adiamo_master_stateroom5	11
92_pershing_adiamo_master_stateroom4	11
92_pershing_adiamo_hallway2	11
92_pershing_adiamo_hallway3	11
92_pershing_adiamo_master_head1	11
92_pershing_adiamo_master_head2	11
92_pershing_adiamo_master_head3	12
92_pershing_adiamo_master_head4	12
92_pershing_adiamo_master_head5	12
92_pershing_adiamo_forward_stateroom4	12
92_pershing_adiamo_forward_stateroom5	12
92_pershing_adiamo_forward_stateroom6	12
92_pershing_adiamo_forward_stateroom7	13
92_pershing_adiamo_forward_stateroom8	13
92_pershing_adiamo_forward_stateroom9	13
92_pershing_adiamo_hallway1	13
92_pershing_adiamo_engine_room8	13
92_pershing_adiamo_engine_room7	13
92_pershing_adiamo_engine_room9	14
92_pershing_adiamo_engine_room10	14
92_pershing_adiamo_engine_room11	14
92_pershing_adiamo_engine_room12	14
92_pershing_adiamo_engine_room13	14

92_pershing_adiamo_engine_room14	14
92_pershing_adiamo_forward_head1	15
92_pershing_adiamo_forward_head2	15
92_pershing_adiamo_forward_stateroom1	15
92_pershing_adiamo_forward_stateroom2	15
92_pershing_adiamo_forward_stateroom3	15
92_pershing_adiamo_crew1	15
92_pershing_adiamo_crew2	16
92_pershing_adiamo_crew3	16
92_pershing_adiamo_crew4	16
92_pershing_adiamo_crew5	16
92_pershing_adiamo_crew6	16
92_pershing_adiamo_crew7	16
92_pershing_adiamo_crew8	17
92_pershing_adiamo_crew9	17
92_pershing_adiamo_crew10	17
92_pershing_adiamo_crew11	17
92_pershing_adiamo_crew12	17
92_pershing_adiamo_crew13	17
92_pershing_adiamo_day_head1	18
92_pershing_adiamo_day_head2	18
92_pershing_adiamo_engine_room1	18
92_pershing_adiamo_engine_room2	18
92_pershing_adiamo_engine_room3	18
92_pershing_adiamo_engine_room4	18
CONTACTS	19
Contact details	19
Telephones	19
Office hours	19

Address

19

SPECIFICATIONS

Overview

N/A

Basic Information

Category: Sport Yacht

Sub Category: High Performance

Model Year: 2015

Year Built: 2015

Country: United States

Dimensions

LOA: 92' (28.04mm)

Beam: 20.41

Max Draft: 5' 5" (1.65mm)

Speed, Capacities and Weight

Cruise Speed: 35 Knots Kts. (40 MPH)

Max Speed: 40 Knots Kts. (46 MPH)

Water Capacity: 317 Gallons

Fuel Capacity: 2378 Gal Gallons

Accommodations

Total Cabins: 4

Total Heads: 5

Hull and Deck Information

Hull Material: Fiberglass

Hull Color: CHARCOAL

Hull Designer: FULVIO DI SIMONI

Engine Information

Engines: 2

Manufacturer: MTU

Engine Type: Inboard

Fuel Type: Diesel

PHOTOS

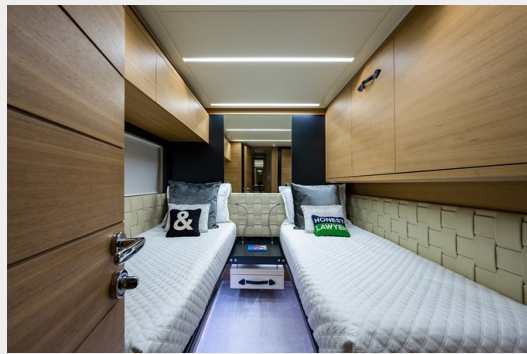
92_pershing_adiamo_starboard_guest_head2



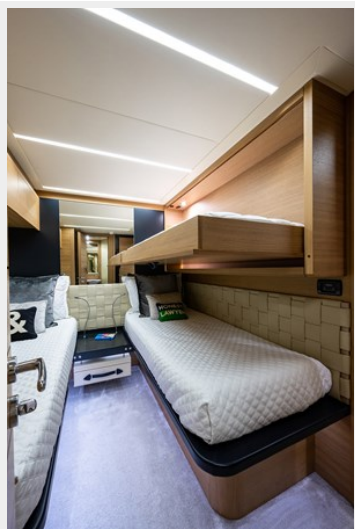
92_pershing_adiamo_starboard_guest_stateroom1



92_pershing_adiamo_starboard_guest_stateroom2 92_pershing_adiamo_starboard_guest_stateroom3



92_pershing_adiamo_starboard_guest_stateroom4



92_pershing_adiamo_port_guest_head2



92_pershing_adiamo_port_guest_head3



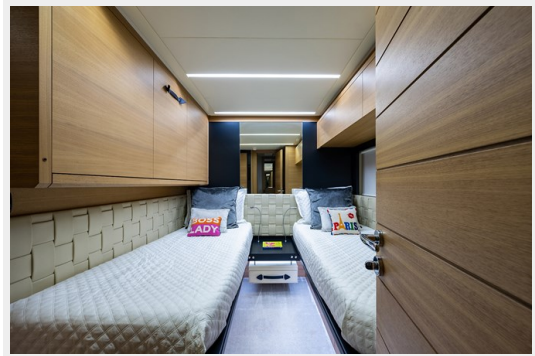
92_pershing_adiamo_port_guest_stateroom1



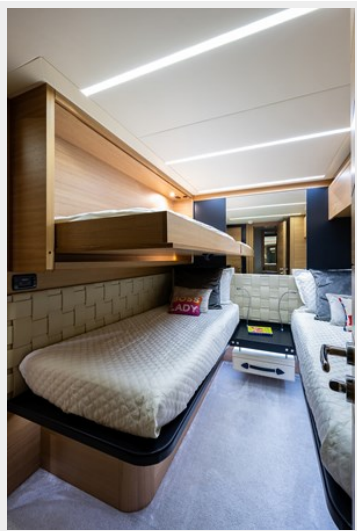
92_pershing_adiamo_port_guest_stateroom2



92_pershing_adiamo_port_guest_stateroom3



92_pershing_adiamo_port_guest_stateroom4



92_pershing_adiamo_port_guest_stateroom5



92_pershing_adiamo_starboard_guest_head1



92_pershing_adiamo_master_stateroom6



92_pershing_adiamo_master_stateroom7



92_pershing_adiamo_master_stateroom8



92_pershing_adiamo_master_stateroom9



92_pershing_adiamo_master_stateroom10



92_pershing_adiamo_master_stateroom11



92_pershing_adiamo_master_stateroom12



92_pershing_adiamo_port_guest_head1



92_pershing_adiamo_master_stateroom1



92_pershing_adiamo_master_stateroom2



92_pershing_adiamo_master_stateroom3



92_pershing_adiamo_master_stateroom5

92_pershing_adiamo_master_stateroom4



92_pershing_adiamo_hallway2



92_pershing_adiamo_hallway3



92_pershing_adiamo_master_head1



92_pershing_adiamo_master_head2



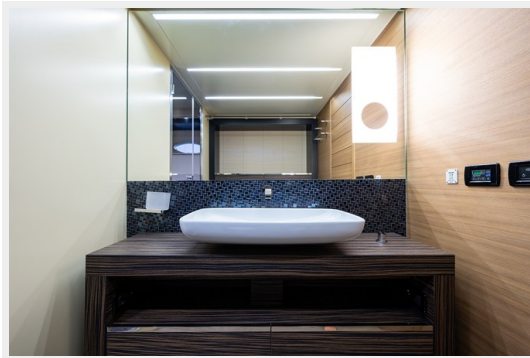
92_pershing_adiamo_master_head3



92_pershing_adiamo_master_head4



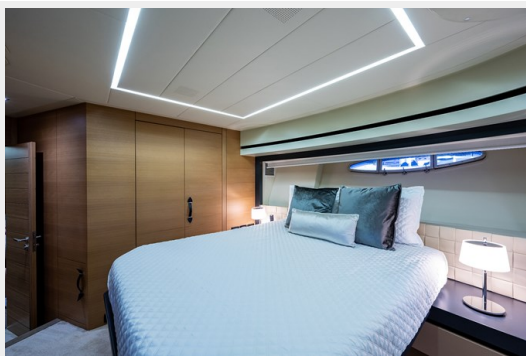
92_pershing_adiamo_master_head5



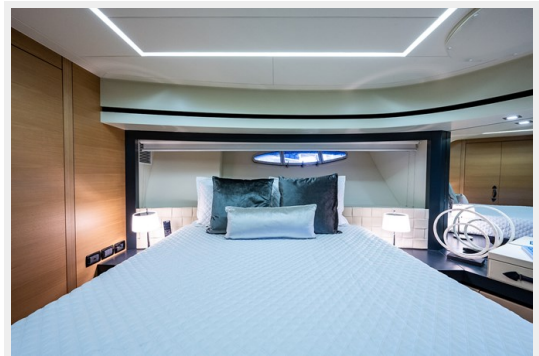
92_pershing_adiamo_forward_stateroom4



92_pershing_adiamo_forward_stateroom5



92_pershing_adiamo_forward_stateroom6



92_pershing_adiamo_forward_stateroom7



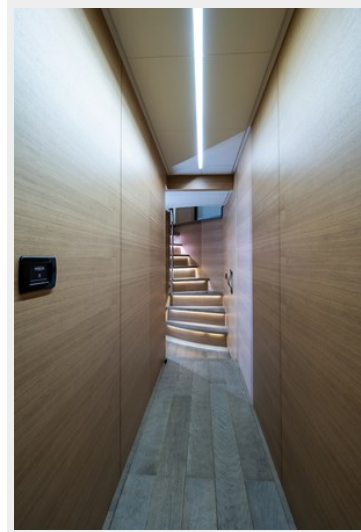
92_pershing_adiamo_forward_stateroom8



92_pershing_adiamo_forward_stateroom9



92_pershing_adiamo_hallway1



92_pershing_adiamo_engine_room7



92_pershing_adiamo_engine_room8



92_pershing_adiamo_engine_room9



92_pershing_adiamo_engine_room10



92_pershing_adiamo_engine_room11



92_pershing_adiamo_engine_room12



92_pershing_adiamo_engine_room13



92_pershing_adiamo_engine_room14



92_pershing_adiamo_forward_head1



92_pershing_adiamo_forward_head2



92_pershing_adiamo_forward_stateroom1



92_pershing_adiamo_forward_stateroom2



92_pershing_adiamo_forward_stateroom3



92_pershing_adiamo_crew1



92_pershing_adiamo_crew2



92_pershing_adiamo_crew3



92_pershing_adiamo_crew4



92_pershing_adiamo_crew5



92_pershing_adiamo_crew6



92_pershing_adiamo_crew7



92_pershing_adiamo_crew8



92_pershing_adiamo_crew9



92_pershing_adiamo_crew10



92_pershing_adiamo_crew11



92_pershing_adiamo_crew12



92_pershing_adiamo_crew13



92_pershing_adiamo_day_head1



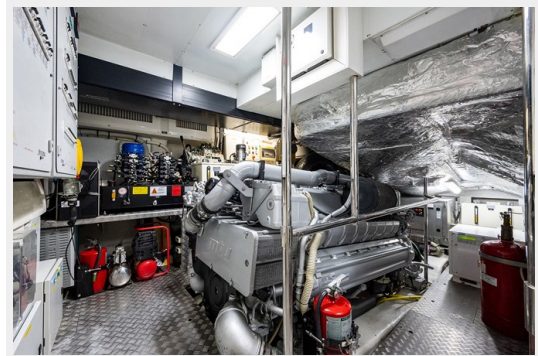
92_pershing_adiamo_day_head2



92_pershing_adiamo_engine_room1



92_pershing_adiamo_engine_room2



92_pershing_adiamo_engine_room3



92_pershing_adiamo_engine_room4



CONTACTS

Andrey Shestakov, leading yacht broker of the sales department of Shestakov Yacht Sales Inc. Shestakov Yacht Sales Inc., the official representative of the Miami/Fort Lauderdale FL headquarters.

Contact details

Email: andrey@shestakovyachtsales.com

Web: shestakovyachtsales.com/en/

Telephones

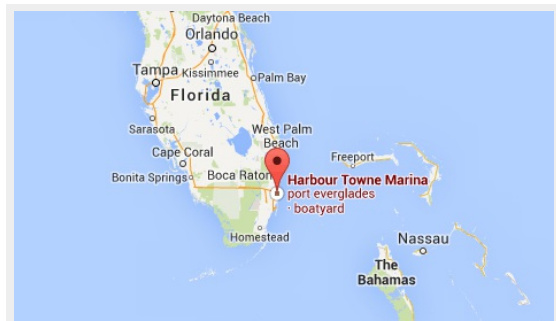
USA: +1(954)274-4435

Office hours

Monday – Saturday: **9:00 - 21:00** EDT

Sunday: **closed**

Address



Harbour Towne Marina, 850 NE 3rd St,
STE 213, Dania, FL 33004