

PANACEA — MAINSHIP



Builder: MAINSHIP

Year Built: 2006

Model: Trawler Yacht

Price: PRICE ON APPLICATION

LOA: 34' (10.36mm)

Beam: 14.25

Min Draft: 3' 4" (1.02mm)

Max Draft: 3' 4" (1.02mm)

Cruise Speed: 8 Knots Kts. (9 MPH)

Max Speed: 20 Knots Kts. (23 MPH)

Our experienced yacht broker, Andrey Shestakov, will help you choose and buy a yacht that best suits your needs **Panacea — MAINSHIP** from our catalogue. Presently, at Shestakov Yacht Sales Inc., we have a wide variety of yachts available on our sale's list. We also work in close contact with all the big yacht manufacturers from all over the world.

If you would like to buy a yacht **Panacea — MAINSHIP** or would like help answering any questions concerning purchasing, selling or chartering a yacht, please call **+1(954)274-4435**

TABLE OF CONTENTS

TABLE OF CONTENTS	2
SPECIFICATIONS	5
Overview	5
Basic Information	5
Dimensions	5
Speed, Capacities and Weight	5
Accommodations	5
Hull and Deck Information	6
Engine Information	6
PHOTOS	7
1 Panacea-HR	7
02ProfileStarboardStern	7
04ProfileBow	7
03ProfileStarboardBow	7
05ProfilePortBow	7
06ProfilePortStern	7
07ProfileStern	8
08CockpitPort	8
09CockpitStarboard	8
10SalonForward	8
11SalonPort	8
12SalonStarboard	8
13SalonLowerHelm	8
14SalonAft	8
15Galley	9
16GalleyForward	9
17GalleyPort	9
18GalleyAft	9

19MasterStateroomForward	9
20MasterStateroomPort	9
22HeadVanityToilet	10
21MasterStateroomStarboard	10
23HeadToiletShower	10
24FlybridgeForward	10
25FlybridgeHelm	11
26FlybridgePort	11
27FlybridgeStarboard	11
28FlybridgeAft	11
29MechPortMainEngine1	11
30MechPortMainEngine	11
31MechPortTransmission	11
32MechPortDriplelessShaftSeal	11
33MechStarboardMainEngine1	12
34MechStarboardMainEngine	12
35MechStarboardTransmission	12
36MechStarboardDriplelessShaftS	12
37MechRacorMainEngineFuelFil1	12
38MechRacorMainEngineFuelFilt	12
39MechRacorGeneratorFuelFilte	13
40MechEngineRoomFireSuppressi	13
41MechOilChangeSystem	13
42MechWaterHeater	13
43ElecGenerator	13
44ElecBatteryCharger	13
45ElecBatteryBank1	13
46ElecBatteryBank2	13
47ElecBatteryBank3	14

48ElecBatteryBank4	14
50DeckOutboard	14
49DeckTender	14
51DeckPortWalkway	15
52DeckStarboardWalkway	15
53DeckBowPulpit	15
54DeckAuxillaryAnchor	15
CONTACTS	16
Contact details	16
Telephones	16
Office hours	16
Address	16

SPECIFICATIONS

Overview

Panacea is a well maintained 2006 Mainship 34 with a beautiful blue hull. She features an island queen size berth forward in the master stateroom, a full head with separate enclosed shower stall, bow and stern thrusters and new flybridge enclosure. She is powered by twin Yanmar 240 hp main engines and 8 kw Kohler generator. Panacea is a Great Loop veteran and is outfitted to do it again or other coastal cruising.

Basic Information

Category: Trawler Yacht

Model Year: 2006

Year Built: 2006

Dimensions

LOA: 34' (10.36mm)

Beam: 14.25

Min Draft: 3' 4" (1.02mm)

Max Draft: 3' 4" (1.02mm)

Speed, Capacities and Weight

Cruise Speed: 8 Knots Kts. (9 MPH)

Max Speed: 20 Knots Kts. (23 MPH)

Water Capacity: 70 Gallons

Holding Tank: 34 Gal Gallons

Fuel Capacity: 250 Gal Gallons

Accommodations

Total Cabins: 1

Total Heads: 1

Hull and Deck Information

Hull Material: Fiberglass

Engine Information

Engines: 2

Manufacturer: Yanmar

Engine Type: Inboard

Fuel Type: Diesel

PHOTOS

1 Panacea-HR



02 Profile Starboard Stern



04 Profile Bow



03 Profile Starboard Bow



05 Profile Port Bow



06 Profile Port Stern



07ProfileStern



08CockpitPort



09CockpitStarboard



10SalonForward



11SalonPort



12SalonStarboard



13SalonLowerHelm



14SalonAft



15Galley



16GalleyForward



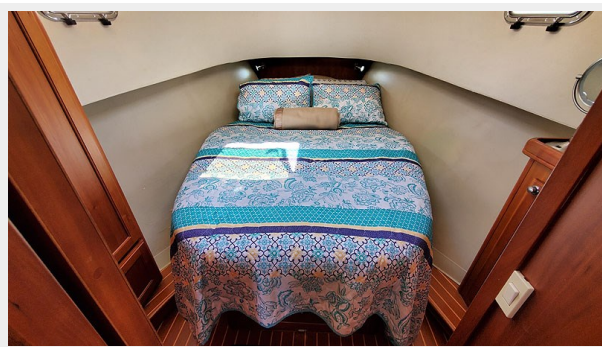
17GalleyPort



18GalleyAft



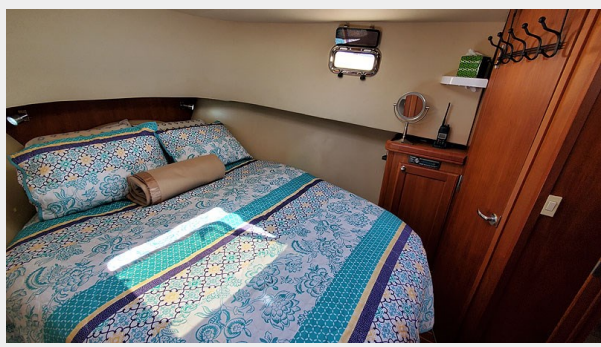
19MasterStateroomForward



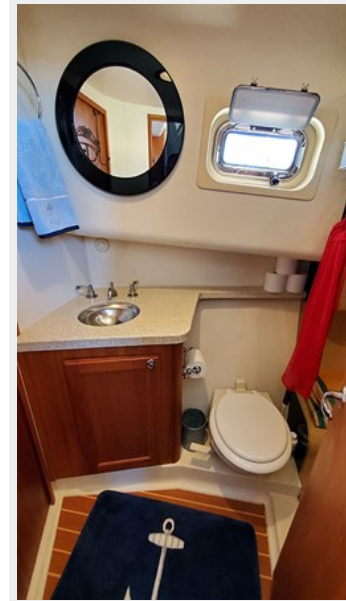
20MasterStateroomPort



21 Master Stateroom Starboard



22 Head Vanity Toilet



23 Head Toilet Shower



24 Flybridge Forward



25FlybridgeHelm



26FlybridgePort



27FlybridgeStarboard



28FlybridgeAft



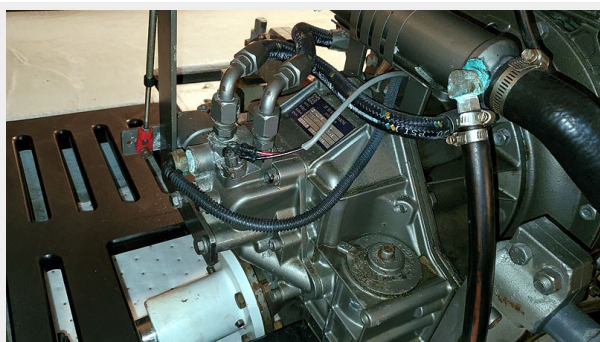
29MechPortMainEngine1



30MechPortMainEngine



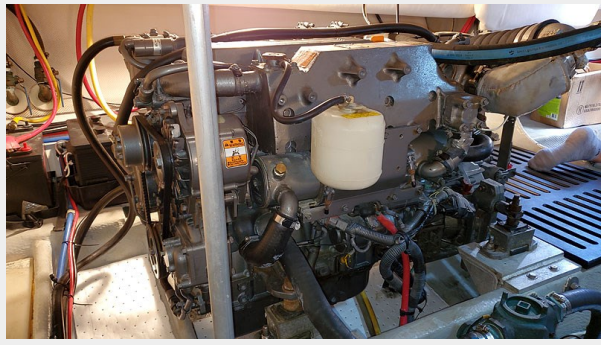
31MechPortTransmission



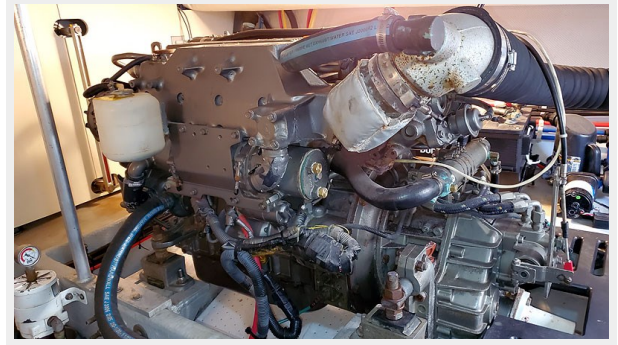
32MechPortDriplessShaftSeal



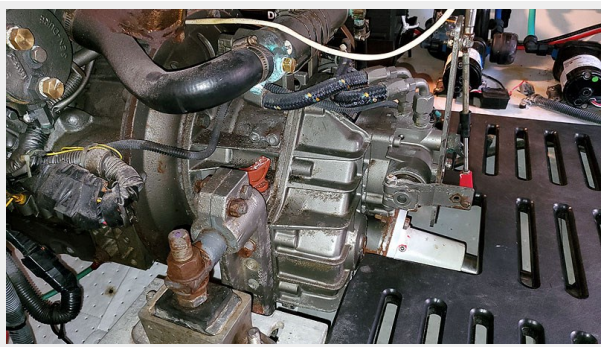
33MechStarboardMainEngine1



34MechStarboardMainEngine



35MechStarboardTransmission



36MechStarboardDriplessShafts



37MechRacorMainEngineFuelFil1



38MechRacorMainEngineFuelFilt



39MechRacorGeneratorFuelFilte



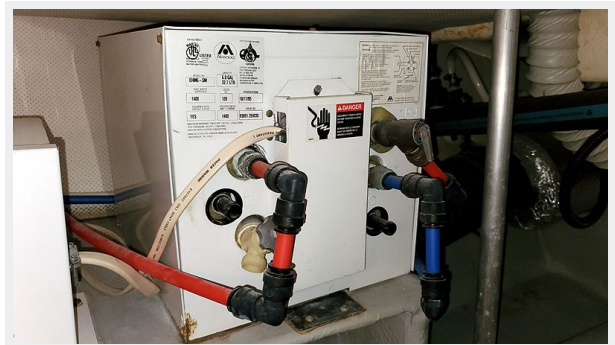
40MechEngineRoomFireSuppressi



41MechOilChangeSystem



42MechWaterHeater



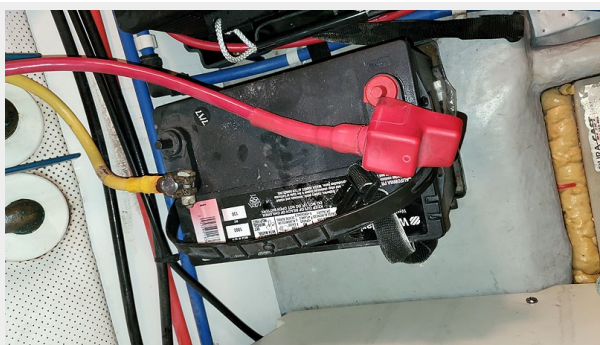
43ElecGenerator



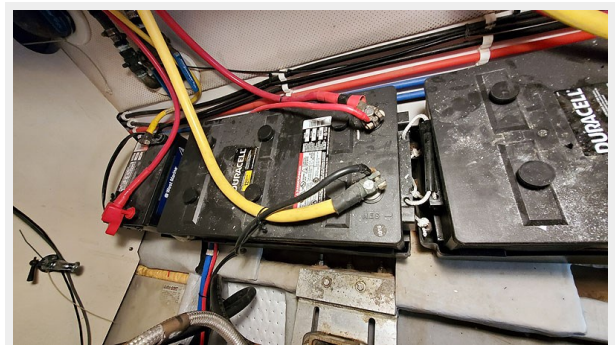
44ElecBatteryCharger



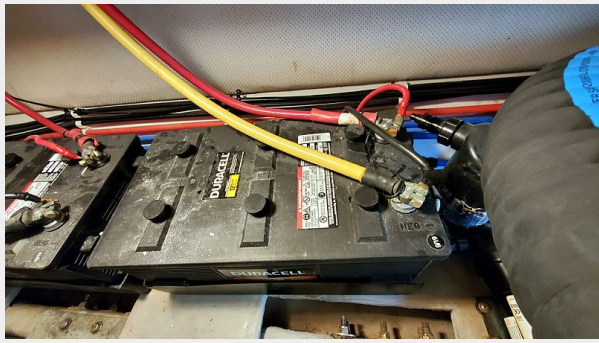
45ElecBatteryBank1



46ElecBatteryBank2



47ElecBatteryBank3



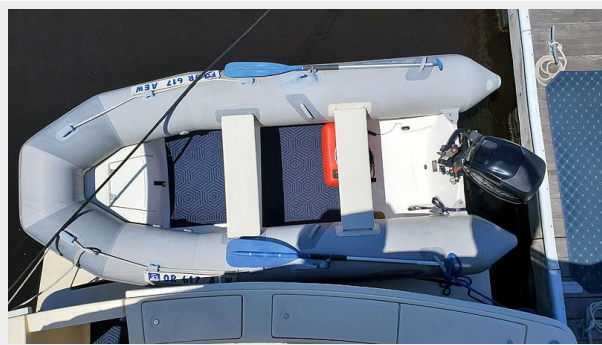
48ElecBatteryBank4



50DeckOutboard



49DeckTender



51DeckPortWalkway



52DeckStarboardWalkway



53DeckBowPulpit



54DeckAuxillaryAnchor



CONTACTS

Andrey Shestakov, leading yacht broker of the sales department of Shestakov Yacht Sales Inc. Shestakov Yacht Sales Inc., the official representative of the Miami/Fort Lauderdale FL headquarters.

Contact details

Email: andrey@shestakovyachtsales.com

Web: shestakovyachtsales.com/en/

Telephones

USA: +1(954)274-4435

Office hours

Monday – Saturday: **9:00 - 21:00** EDT

Sunday: **closed**

Address



Harbour Towne Marina, 850 NE 3rd St,
STE 213, Dania, FL 33004