

## ADVENTURES — CHEOY LEE



**Builder:** CHEOY LEE

**Year Built:** 1990

**Model:** Trawler Yacht

**Price:** PRICE ON APPLICATION

**LOA:** 52' (15.85m)

**Beam:** 15.5

**Min Draft:** 4' 2" (1.27m)

**Cruise Speed:** 12 Knots Kts. (14 MPH)

**Max Speed:** 19 Knots Kts. (22 MPH)

Our experienced yacht broker, Andrey Shestakov, will help you choose and buy a yacht that best suits your needs **ADVENTURES — CHEOY LEE** from **our catalogue**. Presently, at **Shestakov Yacht Sales Inc.**, we have a wide variety of yachts available on **our sale's list**. We also work in close contact with all the big **yacht manufacturers** from all over the world.

If you would like to buy a yacht **ADVENTURES — CHEOY LEE** or would like help answering any questions concerning purchasing, selling or chartering a yacht, please call **+1(954)274-4435**

---

# TABLE OF CONTENTS

---

TABLE OF CONTENTS	2
SPECIFICATIONS	4
Overview	4
Basic Information	4
Dimensions	4
Speed, Capacities and Weight	4
Accommodations	4
Hull and Deck Information	4
Engine Information	5
PHOTOS	6
BOTTOM PAINT 1	6
BOTTOM PAINT 2	6
SALON 1	6
SALON 2	6
SALON 3	6
SALON 4	6
BAR WINE COOLER	7
GALLEY BAR STOOLS	7
GALLEY 1	7
GALLEY 2	7
WHEELHOUSE 2	8
WHEELHOUSE 1	8
WHEELHOUSE 4	8
WHEELHOUSE 3	8
WHEELHOUSE 5	9
STAIRS TO FLYBRIDGE (1)	9
FLYBRIDGE 1	9
FLYBRIDGE 2	9

---

STAIR CASE TO OWNER'S SUITE	10
OWNER CABIN 1	10
OWNER CABIN 3	10
OWNER CABIN 2	10
OWNER CABIN 4	11
OWNER BATH 1	11
OWNER BATH 2	11
FORWARD BATH 1	11
FORWARD BATH 2	12
STAIRCASE TO GUEST SUITES	12
MIDSHIP CABIN	12
VBERTH 1	12
W-D	13
VBERTH 2	13
ENGINE ROOM 1	13
ENGINE ROOM 2	13
ENGINE ROOM 4	14
ENGINE ROOM 3	14
ENGINE ROOM 5	14
CONTACTS	15
Contact details	15
Telephones	15
Office hours	15
Address	15

---

---

# SPECIFICATIONS

---

## Overview

---

N/A

## Basic Information

---

**Category:** Trawler Yacht

**Model Year:** 1991

**Year Built:** 1990

## Dimensions

---

**LOA:** 52' (15.85mm)

**LWL:** 47' 6" (14.48mm)

**Beam:** 15.5

**Min Draft:** 4' 2" (1.27mm)

## Speed, Capacities and Weight

---

**Cruise Speed:** 12 Knots Kts. (14 MPH) **Max Speed:** 19 Knots Kts. (22 MPH)

**Gross Tonnage:** 36 Pounds

**Water Capacity:** 450 Gallons

**Holding Tank:** 40 Gal Gallons

**Fuel Capacity:** 1000 Gal Gallons

## Accommodations

---

**Total Cabins:** 3

**Total Heads:** 2

## Hull and Deck Information

---

**Hull Material:** FRP

**Deck Material:** FRP

---

## Engine Information

---

**Engines:** 2

**Manufacturer:** Caterpillar

**Engine Type:** Inboard

**Fuel Type:** Diesel

# PHOTOS

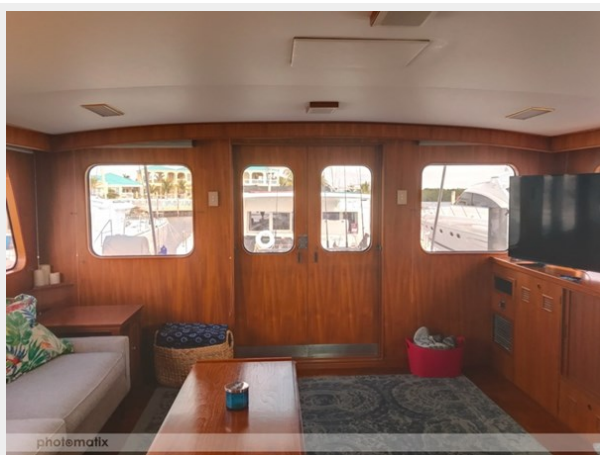
**BOTTOM PAINT 1**



**BOTTOM PAINT 2**



**SALON 1**



**SALON 2**



**SALON 3**



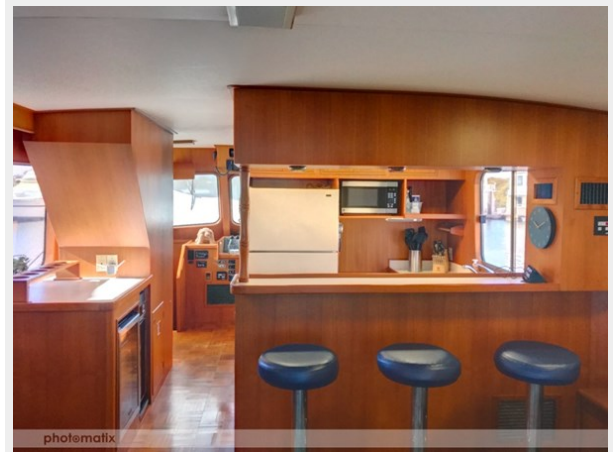
**SALON 4**



### BAR WINE COOLER



### GALLEY BAR STOOLS



### GALLEY 1



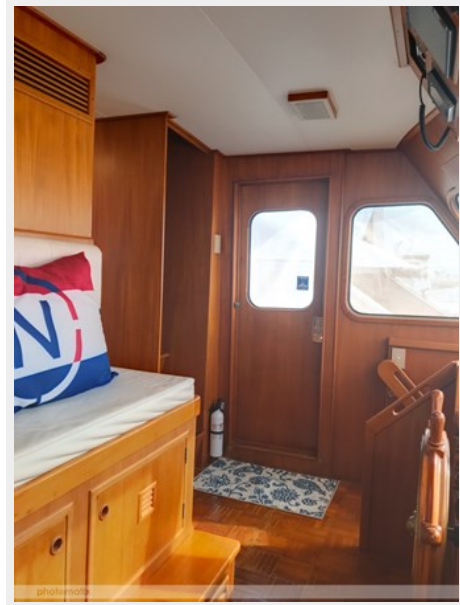
### GALLEY 2



### WHEELHOUSE 1



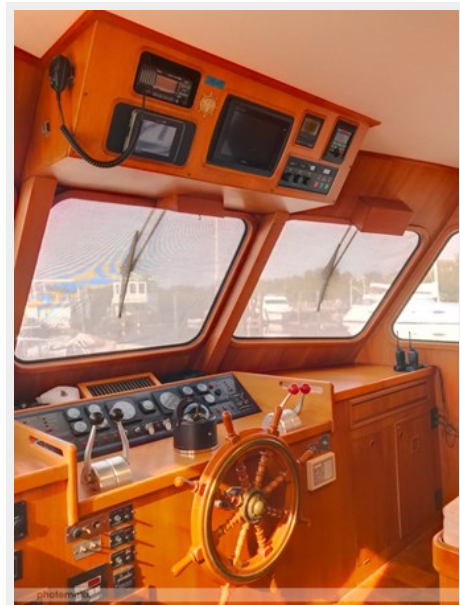
### WHEELHOUSE 2



### WHEELHOUSE 3



### WHEELHOUSE 4

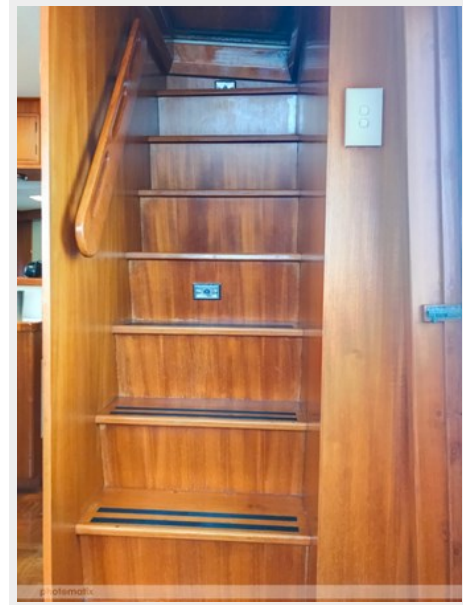




### WHEELHOUSE 5



### STAIRS TO FLYBRIDGE (1)



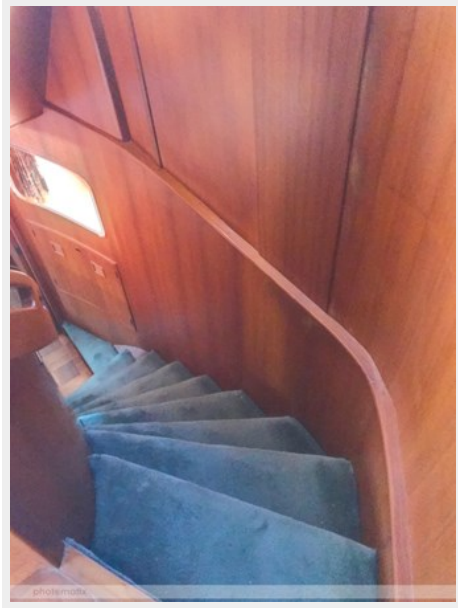
### FLYBRIDGE 1



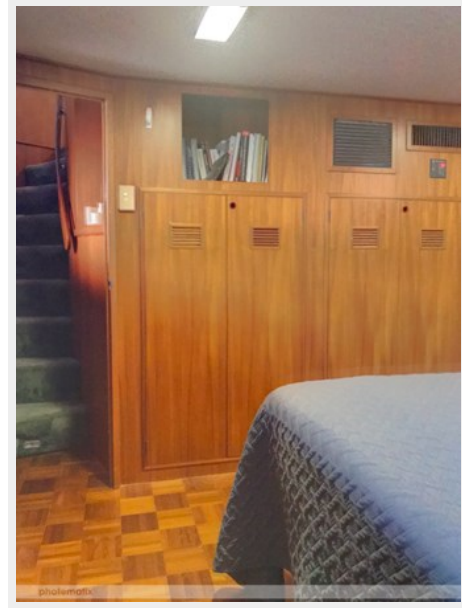
### FLYBRIDGE 2



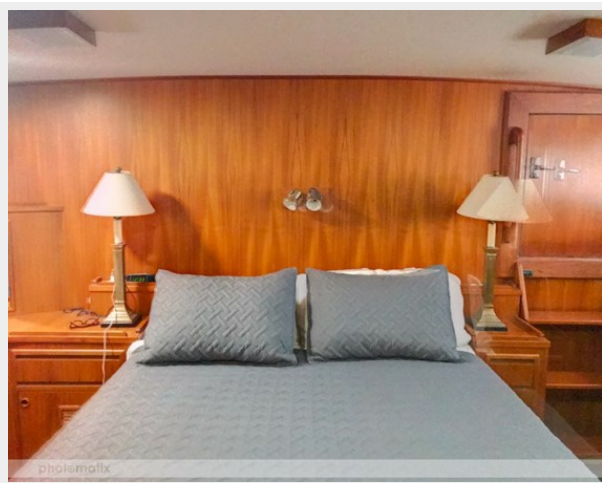
### STAIR CASE TO OWNER'S SUITE



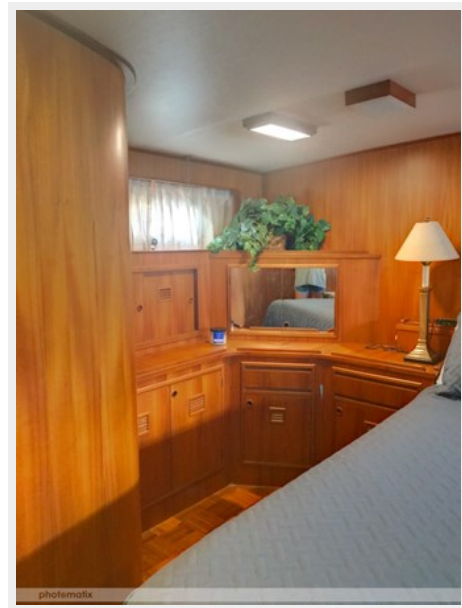
### OWNER CABIN 1



### OWNER CABIN 2



### OWNER CABIN 3



**OWNER CABIN 4**



**OWNER BATH 1**



**OWNER BATH 2**



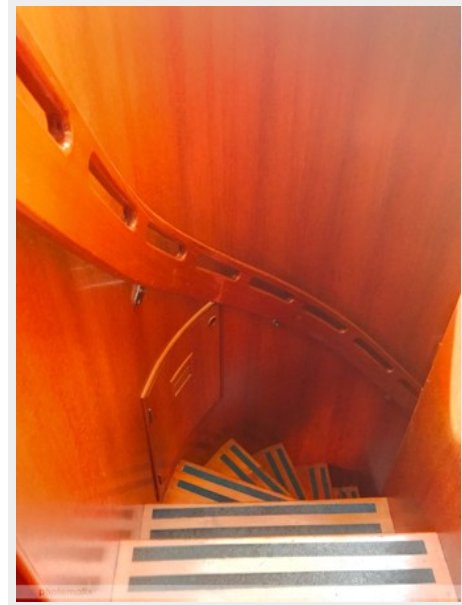
**FORWARD BATH 1**



### FORWARD BATH 2



### STAIRCASE TO GUEST SUITES



### MIDSHIP CABIN



### VBERTH 1



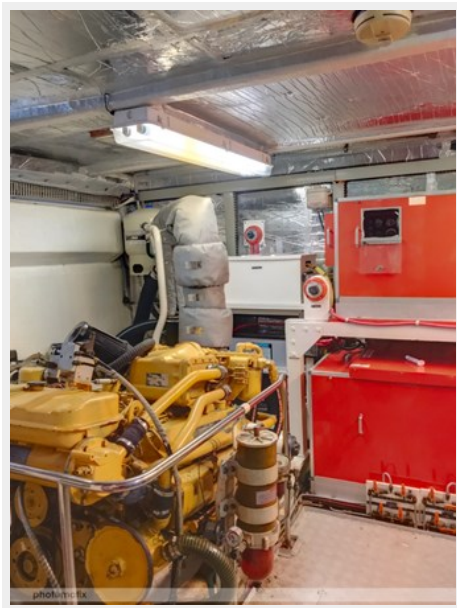
### VBERTH 2



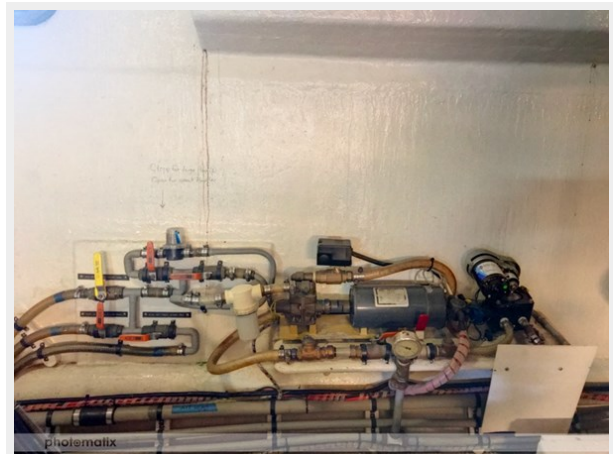
### W-D



### ENGINE ROOM 1



### ENGINE ROOM 2



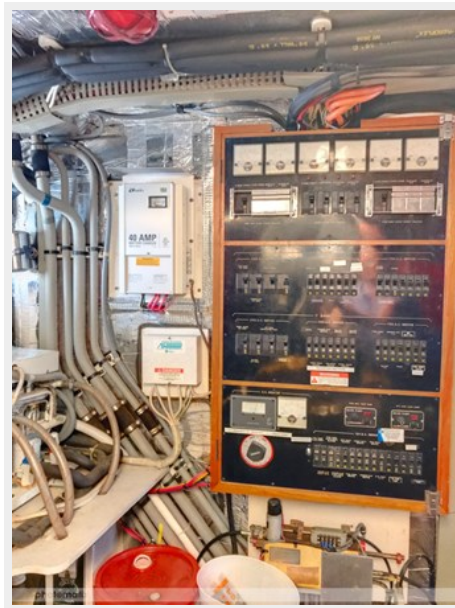
### ENGINE ROOM 3



### ENGINE ROOM 4



### ENGINE ROOM 5



# CONTACTS

---

Andrey Shestakov, leading yacht broker of the sales department of Shestakov Yacht Sales Inc. Shestakov Yacht Sales Inc., the official representative of the Miami/Fort Lauderdale FL headquarters.

## Contact details

---

Email: **andrey@shestakovyachtsales.com**

Web: [shestakovyachtsales.com/en/](http://shestakovyachtsales.com/en/)

## Telephones

---

USA: **+1(954)274-4435**

## Office hours

---

Monday – Saturday: **9:00 - 21:00** EDT

Sunday: **closed**

## Address

---



Harbour Towne Marina, 850 NE 3rd St, STE 213, Dania, FL 33004