

LAUREN L — RON HOLLAND



Builder: RON HOLLAND

Year Built: 1989

Model: Classic Yacht

Price: PRICE ON APPLICATION

LOA: 90' (27.43m)

Beam: 16.5

Max Draft: 9' 10" (3m)

Cruise Speed: 9 Knots Kts. (10 MPH)

Max Speed: 13 Knots Kts. (15 MPH)

Our experienced yacht broker, Andrey Shestakov, will help you choose and buy a yacht that best suits your needs **Lauren L — RON HOLLAND** from our catalogue. Presently, at Shestakov Yacht Sales Inc., we have a wide variety of yachts available on our sale's list. We also work in close contact with all the big yacht manufacturers from all over the world.

If you would like to buy a yacht **Lauren L — RON HOLLAND** or would like help answering any questions concerning purchasing, selling or chartering a yacht, please call **+1(954)274-4435**

TABLE OF CONTENTS

TABLE OF CONTENTS	2
SPECIFICATIONS	4
Overview	4
Basic Information	4
Dimensions	4
Speed, Capacities and Weight	4
Accommodations	4
Hull and Deck Information	5
Engine Information	5
PHOTOS	6
Lauren-L-1152x1536	6
IMG_1024-1152x1536	6
IMG_0919-1152x1536	6
IMG_1126-1152x1536-1	6
IMG_1031-1152x1536	7
IMG_1114-1024x768-1	7
IMG_0936-1152x1536	7
IMG_0959-1024x768	7
IMG_0930-1152x1536	8
IMG_0928-1024x768	8
IMG_0948-1024x768	8
IMG_0932-1024x768	8
IMG_0967-1024x768	8
IMG_0969-1024x768	8
IMG_0978-1152x1536	9
IMG_0991-1024x768	9
IMG_0987-1152x1536	9
IMG_1004-1152x1536	9

CONTACTS	10
Contact details	10
Telephones	10
Office hours	10
Address	10

SPECIFICATIONS

Overview

Ron Holland Custom Gibbs Marine for Sale at Harbor Shoppers.

HUGE PRICE REDUCTION!!!AMAZING OPPORTUNITY!!!

Basic Information

Category: Classic Yacht

Model Year: 1989

Year Built: 1989

Dimensions

LOA: 90' (27.43mm)

Beam: 16.5

Max Draft: 9' 10" (3mm)

Speed, Capacities and Weight

Cruise Speed: 9 Knots Kts. (10 MPH)

Cruise Speed Range: 4500

Max Speed: 13 Knots Kts. (15 MPH)

Water Capacity: 300 Gallons

Holding Tank: 70 Gal Gallons

Fuel Capacity: 1410 Gal Gallons

Accommodations

Total Cabins: 3

Total Berths: 5

Total Heads: 3

Crew Cabin: 2

Crew Berths: 2

Crew Heads: 1

Hull and Deck Information

Hull Material: Other

Deck Material: Teak

Hull Designer: Ron Holland

Exterior Designer: Ron Holland

Interior Designer: Donald Gibbs, F.A.I.A.

Engine Information

Engines: 1

Manufacturer: Perkins

Engine Type: Inboard

Fuel Type: Diesel

PHOTOS

Lauren-L-1152x1536



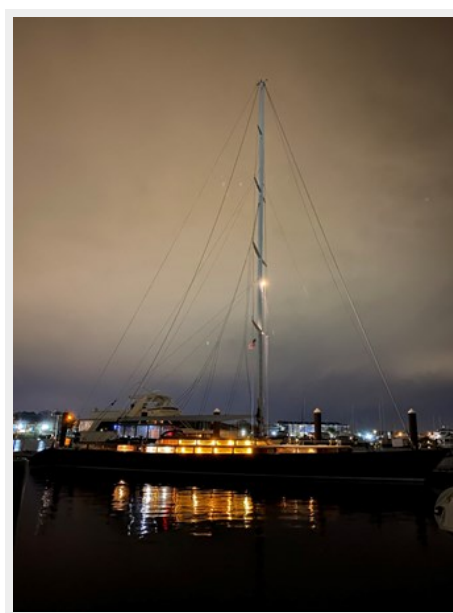
IMG_1024-1152x1536



IMG_0919-1152x1536



IMG_1126-1152x1536-1



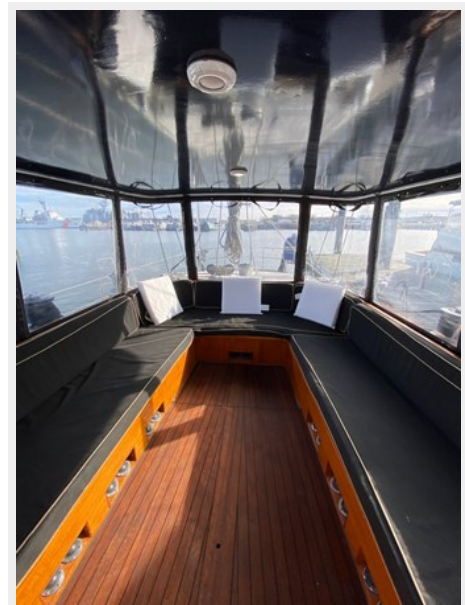
IMG_1031-1152x1536



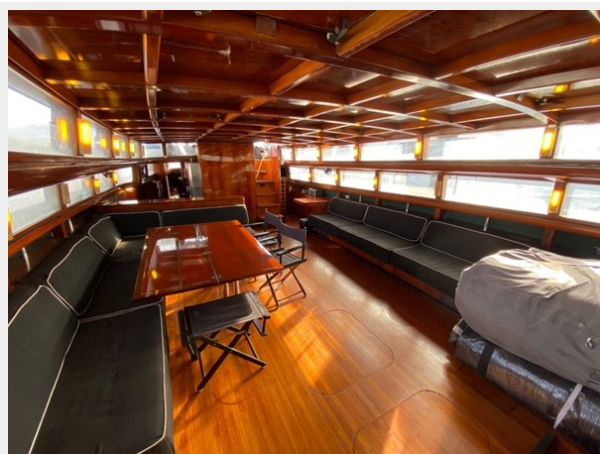
IMG_1114-1024x768-1



IMG_0936-1152x1536



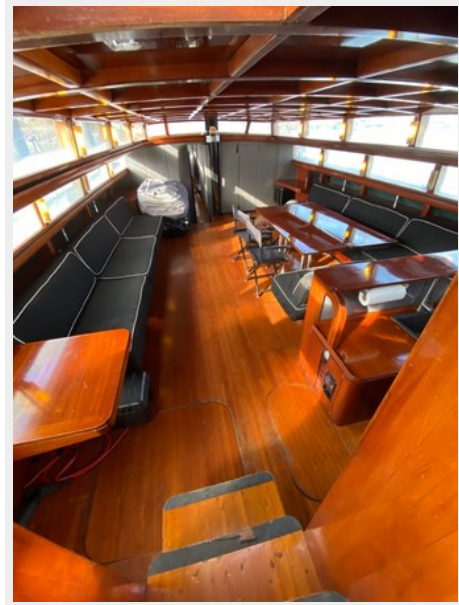
IMG_0959-1024x768



IMG_0928-1024x768



IMG_0930-1152x1536



IMG_0948-1024x768



IMG_0932-1024x768



IMG_0967-1024x768



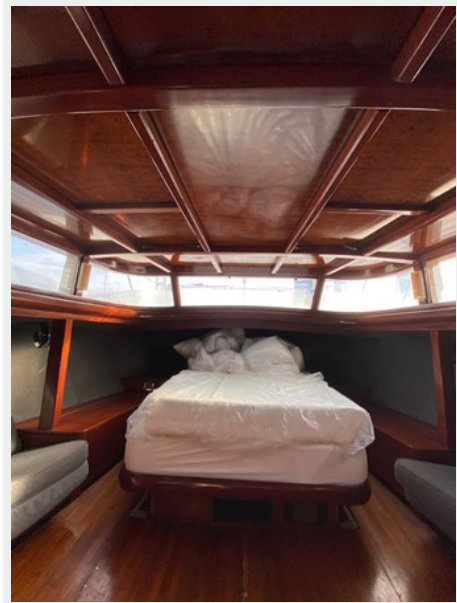
IMG_0969-1024x768



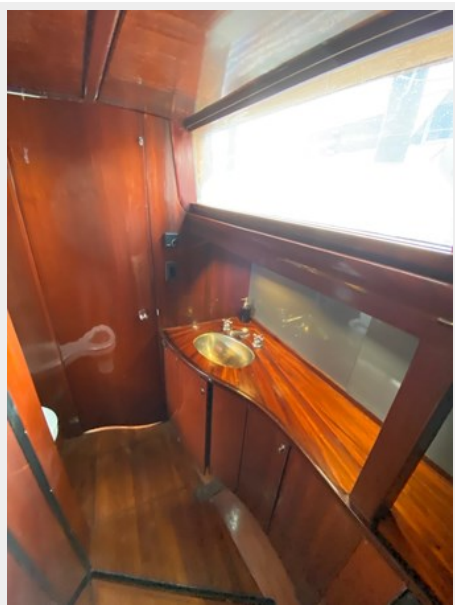
IMG_0991-1024x768



IMG_0978-1152x1536



IMG_0987-1152x1536



IMG_1004-1152x1536



CONTACTS

Andrey Shestakov, leading yacht broker of the sales department of Shestakov Yacht Sales Inc. Shestakov Yacht Sales Inc., the official representative of the Miami/Fort Lauderdale FL headquarters.

Contact details

Email: **andrey@shestakovyachtsales.com**

Web: shestakovyachtsales.com/en/

Telephones

USA: **+1(954)274-4435**

Office hours

Monday – Saturday: **9:00 - 21:00 EDT**

Sunday: **closed**

Address



Harbour Towne Marina, 850 NE 3rd St,
STE 213, Dania, FL 33004