

IL SOLE — BENETTI



Builder: BENETTI

Year Built: 1994

Model: Motor Yacht

Price: PRICE ON APPLICATION

Location: Spain

LOA: 147' 4" (44.89m)

Beam: 28.93

Max Draft: 8' 11" (2.7m)

Cruise Speed: 11 Knots Kts. (13 MPH)

Max Speed: 15 Knots Kts. (17 MPH)

Our experienced yacht broker, Andrey Shestakov, will help you choose and buy a yacht that best suits your needs **IL SOLE — BENETTI** from our catalogue. Presently, at Shestakov Yacht Sales Inc., we have a wide variety of yachts available on our sale's list. We also work in close contact with all the big yacht manufacturers from all over the world.

If you would like to buy a yacht **IL SOLE — BENETTI** or would like help answering any questions concerning purchasing, selling or chartering a yacht, please call **+1(954)274-4435**

TABLE OF CONTENTS

TABLE OF CONTENTS	2
SPECIFICATIONS	4
Basic Information	4
Dimensions	4
Speed, Capacities and Weight	4
Accommodations	4
Hull and Deck Information	5
Engine Information	5
PHOTOS	6
Il_Sole_-51	6
[MOTOR-YACHT-CANDYSCAPE]-1080-8	6
[44m-Yacht-IL-SOLE]-1080-79_CC	6
Il_Sole_-36	6
Il_Sole_-2	6
Il_Sole_-50	6
Il_Sole_-21	7
Il_Sole_-6	7
Il_Sole_-8	7
[MOTOR-YACHT-CANDYSCAPE]-1080-22	7
[MOTOR-YACHT-CANDYSCAPE]-1080-17	7
Il_Sole_-1	7
Il_Sole_-4	8
Il_Sole_-11	8
Il_Sole_-12	8
Il_Sole_-14	8
Il_Sole_-15	8
Il_Sole_-16	8
Il_Sole_-17	9

Il_Sole_-18	9
DJI_0428-0001-RET AJOUT	9
CONTACTS	10
Contact details	10
Telephones	10
Office hours	10
Address	10

SPECIFICATIONS

Basic Information

Category: Motor Yacht

Sub Category: Displacement

Model Year: 1994

Year Built: 1994

Country: Spain

Dimensions

LOA: 147' 4" (44.89mm)

LWL: 111' 7" (34mm)

Beam: 28.93

Max Draft: 8' 11" (2.7mm)

Speed, Capacities and Weight

Cruise Speed: 11 Knots Kts. (13 MPH)

Cruise Speed Range: 2145

Max Speed: 15 Knots Kts. (17 MPH)

Max Speed Range: 1620 Kts.

Gross Tonnage: 421 Pounds

Water Capacity: 10900 Gallons

Holding Tank: 396.26 Gal Gallons

Fuel Capacity: 13287.85 Gal Gallons

Fuel Consumption: 52.83 Gal Gallons

Accommodations

Total Cabins: 6

Sleeps: 12

Crew Cabin: 10

Hull and Deck Information

Hull Material: Steel

Deck Material: Teak

Hull Configuration: Full Displacement

Hull Color: white

Exterior Designer: Stefano Natucci

Interior Designer: Candy and Candy

Engine Information

Engines: 2

Manufacturer: Caterpillar

Engine Type: I/O

Fuel Type: Diesel

PHOTOS

[MOTOR-YACHT-CANDYSCAPE]-1080-8



Il_Sole_-51



[44m-Yacht-IL-SOLE]-1080-79_CC



Il_Sole_-36



Il_Sole_-2



Il_Sole_-50



Il_Sole_-21



Il_Sole_-6



Il_Sole_-8



[MOTOR-YACHT-CANDYSCAPE]-1080-22



[MOTOR-YACHT-CANDYSCAPE]-1080-17



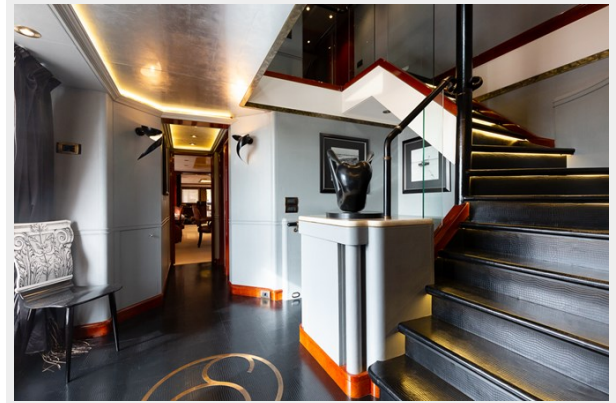
Il_Sole_-1



Il_Sole_-4



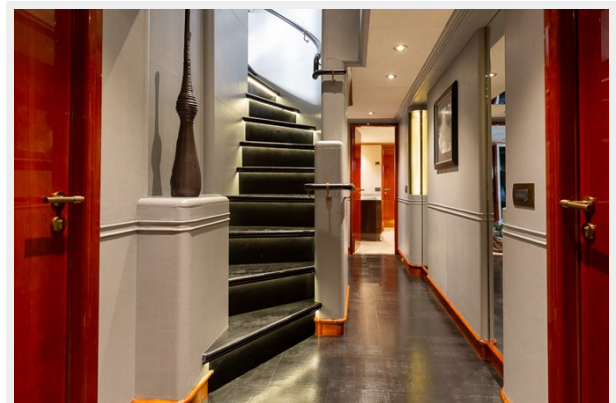
Il_Sole_-11



Il_Sole_-12



Il_Sole_-14



Il_Sole_-15



Il_Sole_-16



Il_Sole_-17



Il_Sole_-18



DJI_0428-0001-RET AJOUT



CONTACTS

Andrey Shestakov, leading yacht broker of the sales department of Shestakov Yacht Sales Inc. Shestakov Yacht Sales Inc., the official representative of the Miami/Fort Lauderdale FL headquarters.

Contact details

Email: andrey@shestakovyachtsales.com

Web: shestakovyachtsales.com/en/

Telephones

USA: +1(954)274-4435

Office hours

Monday – Saturday: **9:00 - 21:00** EDT

Sunday: **closed**

Address



Harbour Towne Marina, 850 NE 3rd St,
STE 213, Dania, FL 33004