

FLOATING DOC III — NEPTUNUS



Builder: NEPTUNUS

Year Built: 2003

Model: Motor Yacht

Price: PRICE ON APPLICATION

Location: United States

LOA: 62' (18.9mm)

Beam: 16.66

Min Draft: 5' (1.52mm)

Max Draft: 5' 2" (1.57mm)

Cruise Speed: 25 Knots Kts. (29 MPH)

Max Speed: 30 Knots Kts. (35 MPH)

Our experienced yacht broker, Andrey Shestakov, will help you choose and buy a yacht that best suits your needs **FLOATING DOC III — NEPTUNUS** from our catalogue. Presently, at Shestakov Yacht Sales Inc., we have a wide variety of yachts available on our sale's list. We also work in close contact with all the big yacht manufacturers from all over the world.

If you would like to buy a yacht **FLOATING DOC III — NEPTUNUS** or would like help answering any questions concerning purchasing, selling or chartering a yacht, please call **+1(954)274-4435**

TABLE OF CONTENTS

TABLE OF CONTENTS	2
SPECIFICATIONS	6
Overview	6
Basic Information	6
Dimensions	6
Speed, Capacities and Weight	6
Accommodations	6
Hull and Deck Information	7
Engine Information	7
PHOTOS	8
Salon Looking Forward	8
Salon to Port	8
Salon to Starboard	8
Salon to Starboard	8
Salon Looking Forward	8
Salon Looking Aft	8
Salon Aft to Port	9
Galley Looking to Starboard	9
Galley Looking Forward	9
Galley Looking Aft	9
Galley Looking to Port	9
Looking Aft from Dinette	9
Main Deck Level Day Head	10
Raised Dinette	10
Companionway Electric Locker	10
Companionway Steps	10
Companionway Laundry	11
Companionway Desk	11

Companionway Looking Forward	11
Master Looking Aft	11
Master to Port	12
Master to Starboard	12
Master Head	12
Master Looking Forward	12
Master Shower	13
Starboard Side Guest	13
Guest Head	13
VIP	13
VIP	13
VIP Looking Aft	13
Bow Thruster Compartment	14
Bow Area	14
Sun Pad	14
Bow Area	14
Aft Deck Tender	15
Windlass Detail	15
Side Decks	15
Custom Boarding Doors	15
Aft Deck	16
Aft Deck	16
Stairs to FB	16
Aft Deck Seating	16
Aft Deck Grill	16
FB Looking Aft	16
FB Looking Aft	17
FB Looking Forward	17
FB Steps	17

FB Hatch Over Steps	17
FB Bar	17
Companion Seat	17
FB Jacuzzi	18
Aft Area of FB	18
FB Looking Aft from Sun Pad	18
FB Sun Pads	18
Sun Pads from Above	18
Helm	18
Radar	19
Switch Panel	19
VHF	19
Center of Helm	19
Garmin Plotter	19
Outboard of Helm	19
Ladder to Coach Roof	20
Hardtop Equipment	20
Hardtop Equipment	20
Engine Room Entrance	20
Port Engine	20
Center Engine Room	20
Starboard Engine Room	21
New AC Chillers	21
Lazarette Access	21
Generator	21
Stern Thruster Batteries	21
Lazarette Storage	21
Mounted Spare Props	22
Alternate Profile	22

Home Dock	22
CONTACTS	23
Contact details	23
Telephones	23
Office hours	23
Address	23

SPECIFICATIONS

Overview

N/A

Basic Information

Category: Motor Yacht

Sub Category: Flybridge with Euro Transom

Model Year: 2004

Year Built: 2003

Country: United States

Dimensions

LOA: 62' (18.9mm)

Beam: 16.66

Min Draft: 5' (1.52mm)

Max Draft: 5' 2" (1.57mm)

Speed, Capacities and Weight

Cruise Speed: 25 Knots Kts. (29 MPH)

Max Speed: 30 Knots Kts. (35 MPH)

Gross Tonnage: 34 Pounds

Water Capacity: 250 Gallons

Holding Tank: 110 Gal Gallons

Fuel Capacity: 1364 Gal Gallons

Accommodations

Total Cabins: 3

Sleeps: 6

Total Heads: 3

Hull and Deck Information

Hull Material: Fiberglass

Deck Material: Teak

Hull Configuration: Modified Deep Vee

Hull Designer: Tony Castro

Exterior Designer: Tony Castro

Interior Designer: Neptunus Yachts

Engine Information

Engines: 2

Manufacturer: CAT

Engine Type: Inboard

Fuel Type: Diesel

PHOTOS

Salon Looking Forward



Salon to Port



Salon to Starboard



Salon to Starboard



Salon Looking Forward



Salon Looking Aft



Salon Aft to Port



Galley Looking to Starboard



Galley Looking Forward



Galley Looking Aft



Galley Looking to Port



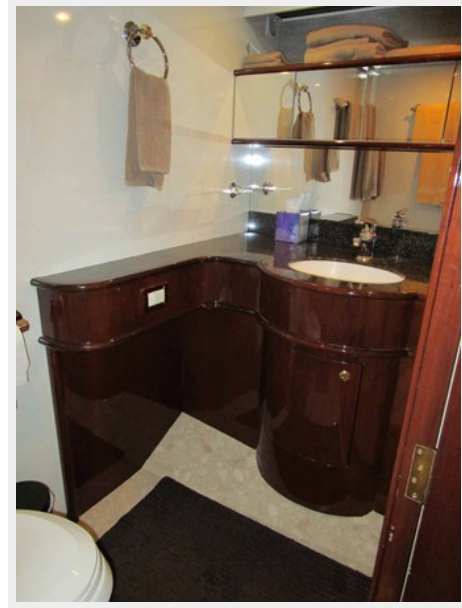
Looking Aft from Dinette



Raised Dinette



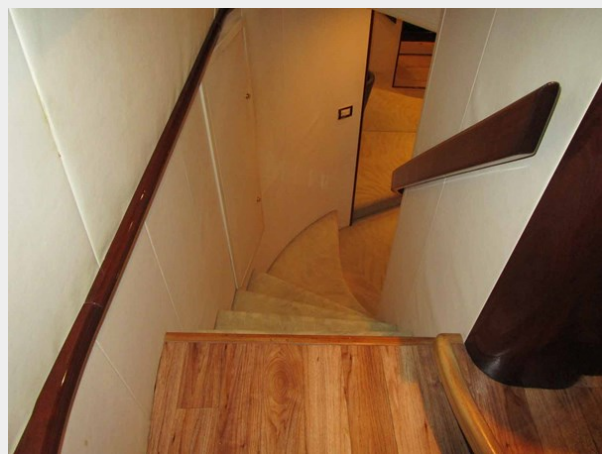
Main Deck Level Day Head



Companionway Electric Locker



Companionway Steps



Companionway Desk



Companionway Laundry



Companionway Looking Forward



Master Looking Aft



Master to Port



Master to Starboard

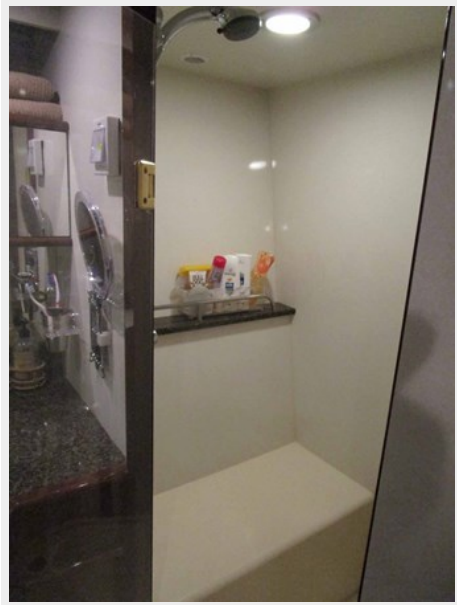


Master Head

Master Looking Forward



Master Shower



Starboard Side Guest



Guest Head



VIP



VIP



VIP Looking Aft



Bow Thruster Compartment



Bow Area



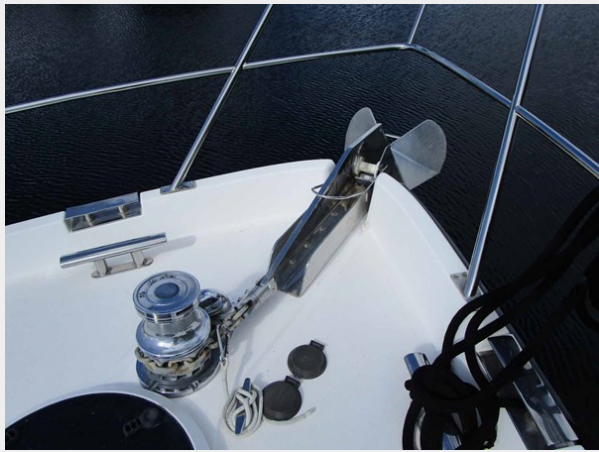
Sun Pad



Bow Area



Windlass Detail



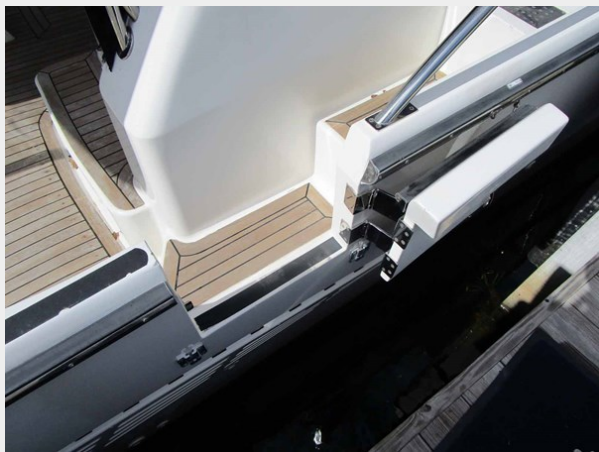
Aft Deck Tender



Side Decks



Custom Boarding Doors



Aft Deck



Aft Deck



Stairs to FB



Aft Deck Seating



Aft Deck Grill



FB Looking Aft



FB Looking Aft



FB Looking Forward



FB Steps



FB Hatch Over Steps



FB Bar



Companion Seat



FB Jacuzzi



Aft Area of FB



FB Looking Aft from Sun Pad



FB Sun Pads



Sun Pads from Above



Helm



Radar



Switch Panel



VHF



Center of Helm



Garmin Plotter



Outboard of Helm



Ladder to Coach Roof



Hardtop Equipment



Hardtop Equipment



Engine Room Entrance



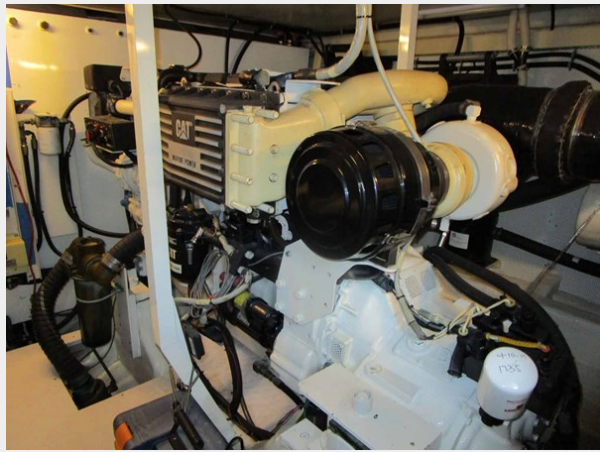
Port Engine



Center Engine Room



Starboard Engine Room



New AC Chillers



Generator



Lazarette Access



Stern Thruster Batteries



Lazarette Storage



Mounted Spare Props



Alternate Profile



Home Dock



CONTACTS

Andrey Shestakov, leading yacht broker of the sales department of Shestakov Yacht Sales Inc. Shestakov Yacht Sales Inc., the official representative of the Miami/Fort Lauderdale FL headquarters.

Contact details

Email: andrey@shestakovyachtsales.com

Web: shestakovyachtsales.com/en/

Telephones

USA: +1(954)274-4435

Office hours

Monday – Saturday: **9:00 - 21:00** EDT

Sunday: **closed**

Address



Harbour Towne Marina, 850 NE 3rd St,
STE 213, Dania, FL 33004