

331 OCEANIS — BENETEAU



Builder: BENETEAU

Year Built: 2001

Model: Sloop

Price: PRICE ON APPLICATION

Location: United States

LOA: 33' 11" (10.34mm)

Beam: 11.33

Max Draft: 5' 6" (1.68mm)

Our experienced yacht broker, Andrey Shestakov, will help you choose and buy a yacht that best suits your needs 331 Oceanis — BENETEAU from our catalogue. Presently, at Shestakov Yacht Sales Inc., we have a wide variety of yachts available on our sale's list. We also work in close contact with all the big yacht manufacturers from all over the world.

If you would like to buy a yacht 331 Oceanis — BENETEAU or would like help answering any questions concerning purchasing, selling or chartering a yacht, please call +1(954)274-4435

TABLE OF CONTENTS

TABLE OF CONTENTS	2
SPECIFICATIONS	5
Overview	5
Basic Information	5
Dimensions	5
Speed, Capacities and Weight	5
Accommodations	6
Hull and Deck Information	6
Engine Information	6
PHOTOS	7
2	7
3	7
4	7
5	7
6	7
7	7
8	8
9	8
10	8
11	8
12	8
13	8
14	9
15	9
16	9
17	9
18	9
19	9

20	10
21	10
22	10
23	10
24	10
25	10
26	11
27	11
28	11
29	11
30	11
31	11
32	12
33	12
34	12
35	12
36	12
37	12
38	13
39	13
40	13
41	13
42	13
43	13
44	14
CONTACTS	15
Contact details	15
Telephones	15
Office hours	15

Address

15

SPECIFICATIONS

Overview

Very clean and well maintained Beneteau 331 for sale. This aft cockpit sloop has two separate staterooms, a head/shower compartment, spacious saloon with convertible dining table and nav station as well as a completely equipped galley. She can accommodate two couples easily with others sleeping on a double berth in the salon. The interior is well ventilated with five cabin side ports and four deck hatches. The cabin also features dockside heat and air conditioning, teak sole, Formica countertops, and plenty of headroom. Cherry and teak woods are used ; the headliner is a low-maintenance white vinyl with teak accents. The deck arrangement is clean and uncluttered. The large aft cockpit features teak seat panels, removable mesh-covered cushions, audio speakers, an extra large canvas bimini, drink holders, two stern rail seats and a folding cockpit table.

. Call for an appointment today.

Basic Information

Category: Sloop

Model Year: 2001

Year Built: 2001

Country: United States

Dimensions

LOA: 33' 11" (10.34mm)

Beam: 11.33

Max Draft: 5' 6" (1.68mm)

Speed, Capacities and Weight

Water Capacity: 52 Gallons

Holding Tank: 28 Gal Gallons

Fuel Capacity: 18 Gal Gallons

Accommodations

Total Cabins: 2

Total Heads: 1

Hull and Deck Information

Hull Material: Fiberglass

Engine Information

Engines: 1

Manufacturer: westerbeke

Engine Type: I/O

Fuel Type: Diesel

PHOTOS

2



3



4



5



6



7



8



9



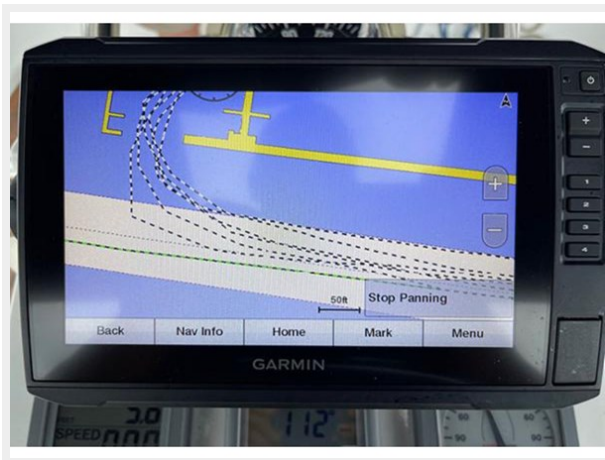
10



11



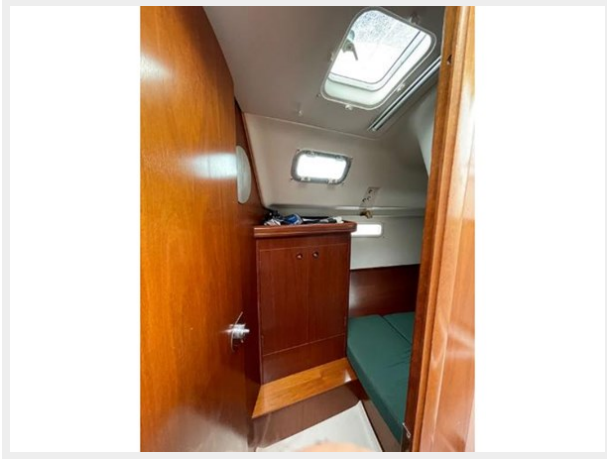
12



13



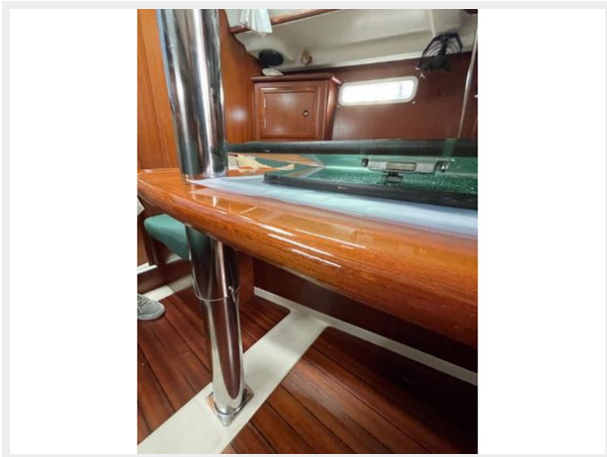
14



15



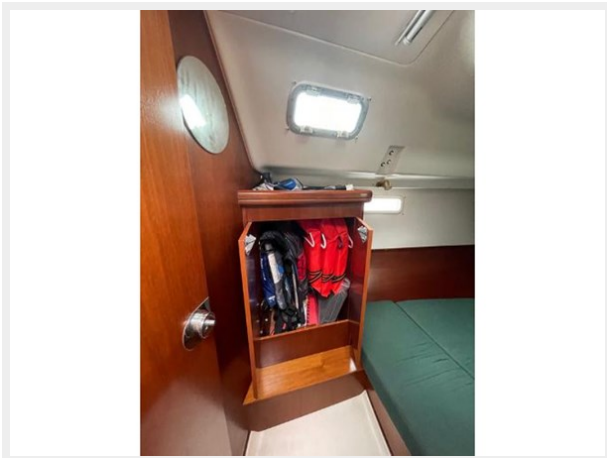
16



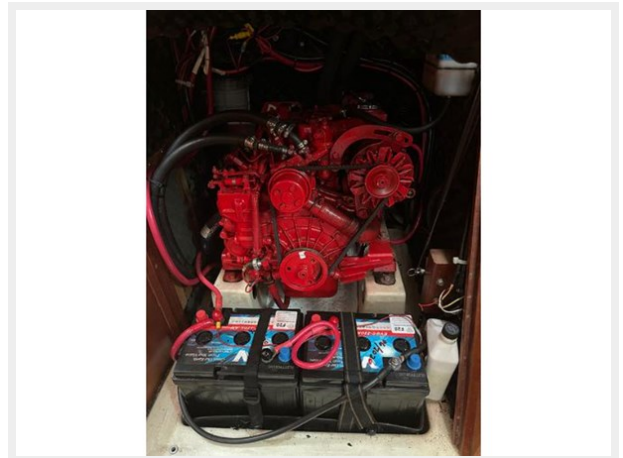
17



18



19



20



21



22



23



24



25



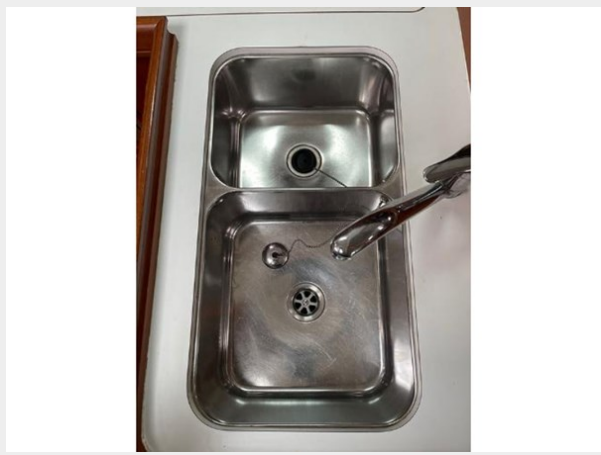
26



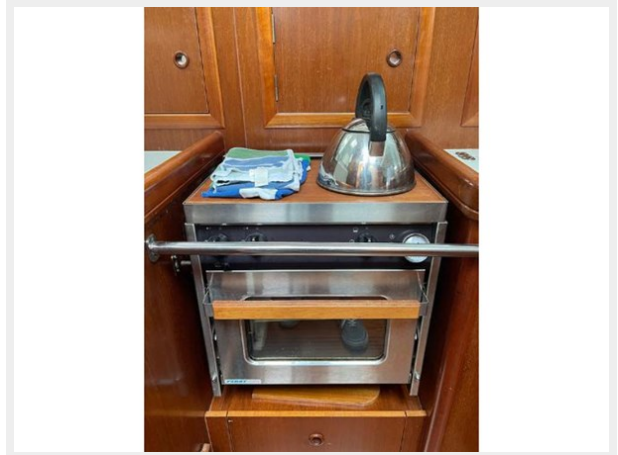
27



28



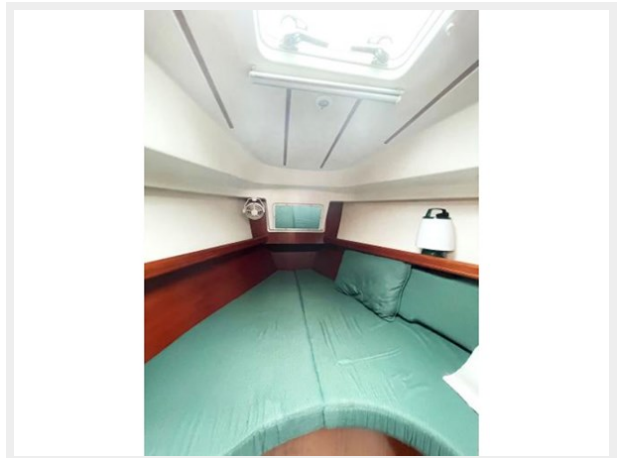
29



30



31



32



33



34



35



36



37



38



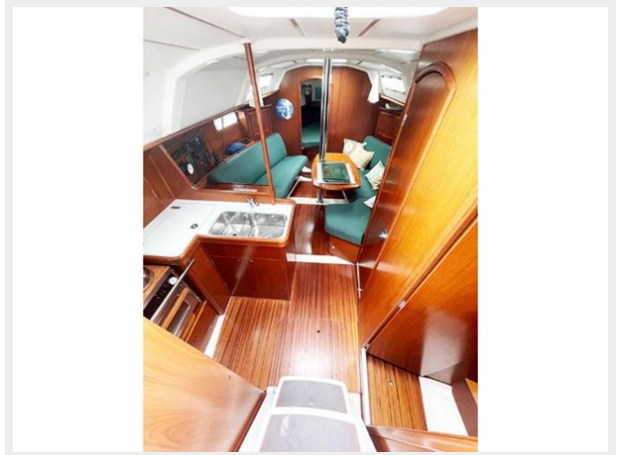
39



40



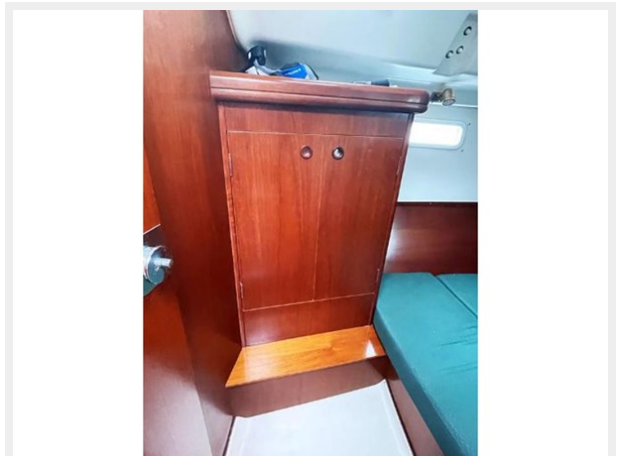
41



42



43



44



CONTACTS

Andrey Shestakov, leading yacht broker of the sales department of Shestakov Yacht Sales Inc. Shestakov Yacht Sales Inc., the official representative of the Miami/Fort Lauderdale FL headquarters.

Contact details

Email: andrey@shestakovyachtsales.com

Web: shestakovyachtsales.com/en/

Telephones

USA: +1(954)274-4435

Office hours

Monday – Saturday: **9:00 - 21:00** EDT

Sunday: **closed**

Address



Harbour Towne Marina, 850 NE 3rd St,
STE 213, Dania, FL 33004