

NAUTILUS VI — CUSTOM



Builder: CUSTOM

Year Built: 1992

Model: Boats

Price: PRICE ON APPLICATION

Location: United States Virgin Islands

LOA: 52' 9" (16.08mm)

Beam: 13.66

Max Draft: 4' 6" (1.37mm)

Our experienced yacht broker, Andrey Shestakov, will help you choose and buy a yacht that best suits your needs **Nautilus VI — CUSTOM** from **our catalogue**. Presently, at **Shestakov Yacht Sales Inc.**, we have a wide variety of yachts available on **our sale's list**. We also work in close contact with all the big **yacht manufacturers** from all over the world.

If you would like to buy a yacht **Nautilus VI — CUSTOM** or would like help answering any questions concerning purchasing, selling or chartering a yacht, please call **+1(954)274-4435**

TABLE OF CONTENTS

TABLE OF CONTENTS	2
SPECIFICATIONS	3
Overview	3
Basic Information	3
Dimensions	3
Speed, Capacities and Weight	3
Hull and Deck Information	3
Engine Information	3
PHOTOS	4
45EF29FC-9378-4EDE-9148-60DA68B8FD49	4
CCD42317-9DBE-4BE4-894A-FF4D97EB11BD	4
288C25F3-4D49-43BA-A525-9F0DC3A19F79	4
81E31C0B-5BBB-4B61-AE1B-628D6A6C62E9	4
1E37BA4A-C68B-4A25-9FFD-414171F9E909	5
50F41177-8117-480E-A57C-730232C1609A	5
DB47E9E2-CF9B-4772-9277-1743A880C336	5
Launching_Port-1-600x338-1	5
4E6D4993-9159-447E-BC71-3B4AC27C4C13	6
Haulout_Starboard-1024x576	6
CONTACTS	7
Contact details	7
Telephones	7
Office hours	7
Address	7

SPECIFICATIONS

Overview

Semi Submarine Subsee Explorer For Sale Subsee Explorer 53 ft vessel offers a large deck space. It can hold up to 25 passengers with 3 crew members both on deck and below in the underwater viewing area and already has a commercial passenger license.

Basic Information

Category: Boats

Model Year: 1992

Year Built: 1992

Country: United States Virgin Islands

Dimensions

LOA: 52' 9" (16.08mm)

Beam: 13.66

Max Draft: 4' 6" (1.37mm)

Speed, Capacities and Weight

Gross Tonnage: 17000 Pounds

Hull and Deck Information

Hull Material: Aluminum

Engine Information

Engines: 2

Manufacturer: Yamaha

Fuel Type: Gas/Petrol

PHOTOS

45EF29FC-9378-4EDE-9148-60DA68B8FD49



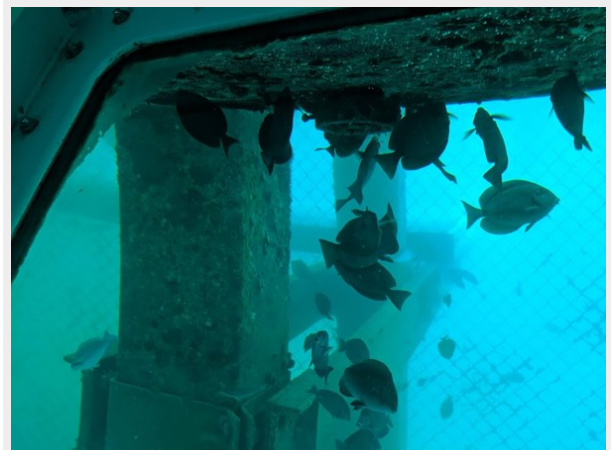
CCD42317-9DBE-4BE4-894A-FF4D97EB11BD



288C25F3-4D49-43BA-A525-9F0DC3A19F79



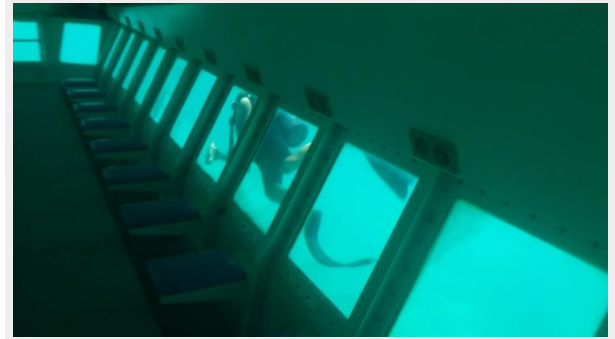
81E31C0B-5BBB-4B61-AE1B-628D6A6C62E9



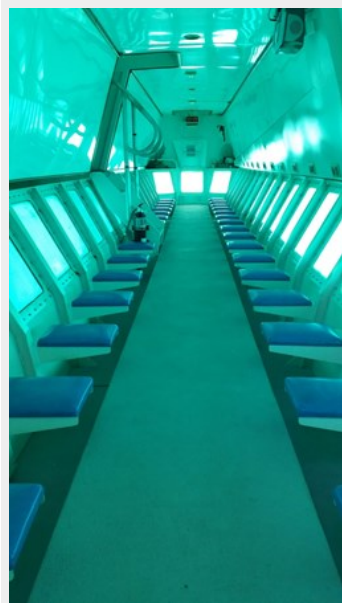
**1E37BA4A-C68B-4A25-9FFD-
414171F9E909**



**50F41177-8117-480E-A57C-
730232C1609A**



**DB47E9E2-CF9B-4772-9277-
1743A880C336**



Launching_Port-1-600x338-1



Haulout_Starboard-1024x576



4E6D4993-9159-447E-BC71-3B4AC27C4C13



CONTACTS

Andrey Shestakov, leading yacht broker of the sales department of Shestakov Yacht Sales Inc. Shestakov Yacht Sales Inc., the official representative of the Miami/Fort Lauderdale FL headquarters.

Contact details

Email: **andrey@shestakovyachtsales.com**

Web: shestakovyachtsales.com/en/

Telephones

USA: **+1(954)274-4435**

Office hours

Monday – Saturday: **9:00 - 21:00** EDT

Sunday: **closed**

Address



Harbour Towne Marina, 850 NE 3rd St, STE 213, Dania, FL 33004