

BLUE BERRY — BENETTI



Builder: BENETTI

Year Built: 2014

Model: Motor Yacht

Price: Price on Application

Location: Turkey

LOA: 105' 10" (32.26m)

Beam: 23.58

Cruise Speed: 12.7 Knots Kts. (15 MPH)

Max Speed: 13.7 Knots Kts. (16 MPH)

Our experienced yacht broker, Andrey Shestakov, will help you choose and buy a yacht that best suits your needs **BLUE BERRY — BENETTI** from our catalogue. Presently, at Shestakov Yacht Sales Inc., we have a wide variety of yachts available on our sale's list. We also work in close contact with all the big yacht manufacturers from all over the world.

If you would like to buy a yacht **BLUE BERRY — BENETTI** or would like help answering any questions concerning purchasing, selling or chartering a yacht, please call **+1(954)274-4435**

TABLE OF CONTENTS

TABLE OF CONTENTS	2
SPECIFICATIONS	4
Overview	4
Basic Information	4
Dimensions	4
Speed, Capacities and Weight	4
Accommodations	5
Hull and Deck Information	5
Engine Information	5
PHOTOS	6
BLUE BERRY (3)	6
BLUE BERRY (2)	6
BLUE BERRY (4)	6
BLUE BERRY (5)	6
BLUE BERRY (6)	6
BLUE BERRY (7)	6
BLUE BERRY (8)	7
BLUE BERRY (9)	7
BLUE BERRY (10)	7
BLUE BERRY (11)	7
BLUE BERRY (13)	7
BLUE BERRY (12)	7
BLUE BERRY (15)	8
BLUE BERRY (14)	8
BLUE BERRY (16)	8
BLUE BERRY (17)	8
BLUE BERRY (18)	8
BLUE BERRY (19)	8

CONTACTS	9
Contact details	9
Telephones	9
Office hours	9
Address	9

SPECIFICATIONS

Overview

KEEN SELLER!

MAKE AN OFFER!

KEY FEATURES• Perfect fuel efficiency and sea keeping• Low hours on engines• Built in Viareggio, Italy• Last delivery of the brand in EU

Launched in 2014, BSD 108RS (Rounded Stern) super yacht BLUE BERRY, previously known as BSD 105RS, is a magnificent 31,5-metre craft, built by the Italian yard, Benetti Sail Division.

Designed by Verme Projects, with interior design by Acube Design, luxury yacht Blue Berry represents an elegant reinterpretation of the popular 'rounded stern' motor yacht. She is an ideal vessel for exploration of the world according to a philosophy devoted to the awareness of travelling and the joy of living. Accommodation aboard the Benetti Sail Division super yacht BLUE BERRY is provided to up to 10 guests in elegant and comfortable 5 staterooms. There is also space for the vessel's highly trained crew of up to 6 professionals. Built according RINA class rules, the 32m luxury yacht BLUE BERRY (BSD 108RS) is equipped with twin MAN D 2842 LE 413 diesels. She can achieve a top speed of 13.7 knots and a cruising speed of 12.7 knots.

Basic Information

Category: Motor Yacht

Model Year: 2014

Year Built: 2014

Country: Turkey

Dimensions

LOA: 105' 10" (32.26mm)

Beam: 23.58

Speed, Capacities and Weight

Cruise Speed: 12.7 Knots Kts. (15 MPH)

Max Speed: 13.7 Knots Kts. (16 MPH)

Gross Tonnage: 210 Pounds

Fuel Capacity: 11887.74 Gal Gallons

Accommodations

Total Cabins: 5

Hull and Deck Information

Hull Material: Steel

Hull Configuration: Displacement w/
Bulbous Bow

Engine Information

Engines: 2

Manufacturer: MAN

Engine Type: Inboard

Fuel Type: Diesel

PHOTOS

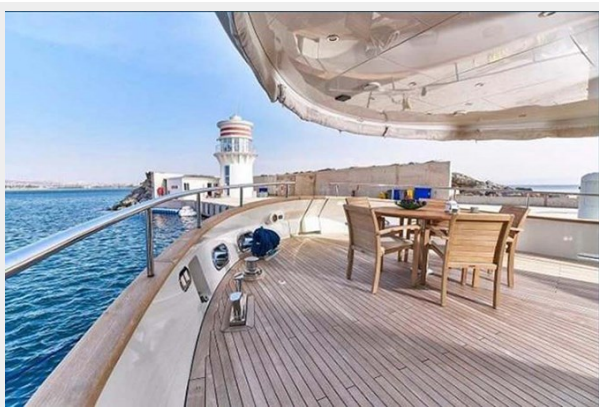
BLUE BERRY (2)



BLUE BERRY (3)



BLUE BERRY (4)



BLUE BERRY (5)



BLUE BERRY (6)



BLUE BERRY (7)



BLUE BERRY (8)



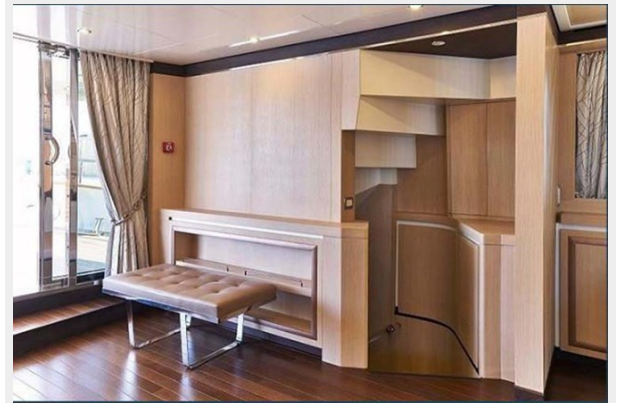
BLUE BERRY (9)



BLUE BERRY (10)



BLUE BERRY (11)



BLUE BERRY (12)



BLUE BERRY (13)



BLUE BERRY (14)



BLUE BERRY (15)



BLUE BERRY (16)



BLUE BERRY (17)



BLUE BERRY (18)



BLUE BERRY (19)



CONTACTS

Andrey Shestakov, leading yacht broker of the sales department of Shestakov Yacht Sales Inc. Shestakov Yacht Sales Inc., the official representative of the Miami/Fort Lauderdale FL headquarters.

Contact details

Email: andrey@shestakovyachtsales.com

Web: shestakovyachtsales.com/en/

Telephones

USA: +1(954)274-4435

Office hours

Monday – Saturday: **9:00 - 21:00** EDT

Sunday: **closed**

Address



Harbour Towne Marina, 850 NE 3rd St,
STE 213, Dania, FL 33004