

DUJE — PRINCESS YACHTS



Builder: PRINCESS YACHTS

Model: Motor Yacht

LOA: 58' (17.68mm)

Max Draft: 3' 10" (1.15mm)

Cruise Speed: 28 Knots Kts. (32 MPH)

Max Speed: 38 Knots Kts. (44 MPH)

Our experienced yacht broker, Andrey Shestakov, will help you choose and buy a yacht that best suits your needs **Duje — PRINCESS YACHTS** from **our catalogue**. Presently, at **Shestakov Yacht Sales Inc.**, we have a wide variety of yachts available on **our sale's list**. We also work in close contact with all the big **yacht manufacturers** from all over the world.

If you would like to buy a yacht **Duje — PRINCESS YACHTS** or would like help answering any questions concerning purchasing, selling or chartering a yacht, please call **+1(954)274-4435**

TABLE OF CONTENTS

TABLE OF CONTENTS	2
SPECIFICATIONS	4
Overview	4
Basic Information	4
Dimensions	4
Speed, Capacities and Weight	4
Accommodations	5
Hull and Deck Information	5
Engine Information	5
PHOTOS	6
051a8b00-c28c-4dc6-8d27-69a60cdf13a9	6
Screen Shot 2021-08-12 at 13.41.44	6
Screen Shot 2021-08-12 at 13.44.51	6
Screen Shot 2021-08-12 at 13.37.27	6
21dc548b-69e1-4a3d-be1f-c032d99f6e2c	7
Screen Shot 2021-08-12 at 13.43.09	7
efbfec3d-e56d-4b3b-a26c-8fb183a278c8	7
6c51d405-fbc5-4bd0-a7b2-6f18d0b0b38e	7
ff74a1fa-33f7-41b5-bae6-63f0073bded6	7
69d3d3a8-cef8-4f26-abe9-8d89c2b74dd5	7
91646459-73f1-44ad-a6fa-a589a0abc91b-1	8
f32e8a18-9f85-4b96-8ee2-263ee942fba0	8
5868ec67-7901-4f4f-983c-9d2497b08c52-1	8
62d0df33-6261-4dce-b843-69ef643fcd41	8
CONTACTS	9
Contact details	9
Telephones	9
Office hours	9

Address

9

SPECIFICATIONS

Overview

Refit 2019

VAT Paid - First Registered 2009 - Generator 13Kw

This beautiful Princess, is an excellent maintained yacht with full of extras. She got hard top with electrically operated sliding roof and AirCondition in all bedrooms even in the Cockpit are.

Key Features:

- BowThruster
- Electro-hydraulically tender garage with rolling system
- WiFi
- Service 2021

Please contact us for more information

Basic Information

Category: Motor Yacht

Sub Category: Cockpit

Model Year: 2008

Dimensions

LOA: 58' (17.68mm)

Max Draft: 3' 10" (1.15mm)

Speed, Capacities and Weight

Cruise Speed: 28 Knots Kts. (32 MPH) **Max Speed:** 38 Knots Kts. (44 MPH)

Water Capacity: 480 Gallons

Fuel Capacity: 686.85 Gal Gallons

Accommodations

Total Cabins: 3

Total Berths: 6

Sleeps: 6

Total Heads: 2

Hull and Deck Information

Hull Material: Fiberglass

Engine Information

Engines: 2

Manufacturer: MAN

Engine Type: Inboard

Fuel Type: Diesel

PHOTOS

051a8b00-c28c-4dc6-8d27-69a60cdf13a9



Screen Shot 2021-08-12 at 13.41.44



Screen Shot 2021-08-12 at 13.44.51



Screen Shot 2021-08-12 at 13.37.27



Screen Shot 2021-08-12 at 13.43.09



21dc548b-69e1-4a3d-be1f-c032d99f6e2c



efbfec3d-e56d-4b3b-a26c-8fb183a278c8



6c51d405-fbc5-4bd0-a7b2-6f18d0b0b38e



ff74a1fa-33f7-41b5-bae6-63f0073bded6



69d3d3a8-cef8-4f26-abe9-8d89c2b74dd5



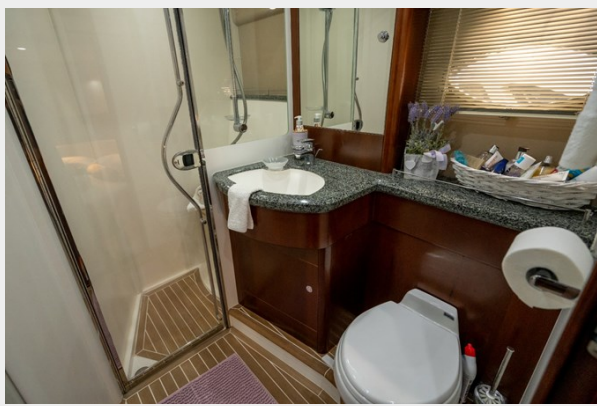
**91646459-73f1-44ad-a6fa-
a589a0abc91b-1**



**f32e8a18-9f85-4b96-8ee2-
263ee942fba0**



**5868ec67-7901-4f4f-983c-
9d2497b08c52-1**



**62d0df33-6261-4dce-b843-
69ef643fcd41**



CONTACTS

Andrey Shestakov, leading yacht broker of the sales department of Shestakov Yacht Sales Inc. Shestakov Yacht Sales Inc., the official representative of the Miami/Fort Lauderdale FL headquarters.

Contact details

Email: **andrey@shestakovyachtsales.com**

Web: shestakovyachtsales.com/en/

Telephones

USA: **+1(954)274-4435**

Office hours

Monday – Saturday: **9:00 - 21:00** EDT

Sunday: **closed**

Address



Harbour Towne Marina, 850 NE 3rd St, STE 213, Dania, FL 33004