

HELL'S BELLES — LITTLE HARBOR



Builder: LITTLE HARBOR

Year Built: 1991

Model: Cruising Sailboat

Price: PRICE ON APPLICATION

Location: United States

LOA: 54' (16.46mm)

Beam: 15.08

Min Draft: 5' 8" (1.73mm)

Max Draft: 11' 4" (3.45mm)

Cruise Speed: 7.7 Knots Kts. (9 MPH)

Max Speed: 8.5 Knots Kts. (10 MPH)

Our experienced yacht broker, Andrey Shestakov, will help you choose and buy a yacht that best suits your needs HELL'S BELLES — LITTLE HARBOR from our catalogue. Presently, at Shestakov Yacht Sales Inc., we have a wide variety of yachts available on our sale's list. We also work in close contact with all the big yacht manufacturers from all over the world.

If you would like to buy a yacht HELL'S BELLES — LITTLE HARBOR or would like help answering any questions concerning purchasing, selling or chartering a yacht, please call +1(954)274-4435

TABLE OF CONTENTS

TABLE OF CONTENTS	2
SPECIFICATIONS	4
Overview	4
Basic Information	4
Dimensions	4
Speed, Capacities and Weight	4
Accommodations	4
Hull and Deck Information	5
Engine Information	5
PHOTOS	6
Salon, Stbd.	6
Salon, Fwd.	6
Salon, Port.	6
Port Salon Aft to Nav	6
Nav	6
Nav Detail	6
Owner's Cabin, Looking Aft	7
Owners SR Fwd.	7
Head	7
Fwd. Salon to Port Guest Cabin	7
Port Guest Cabin	8
Head	8
Stbd. Guest Cabin	8
Stbd. Guest Cabin, Looking Fwd.	8
Salon Aft to Galley	9
Galley, Looking Aft	9
Electrical Panel	9
Switch Panel	9

Foredeck, Fwd.	9
Coach Roof Aft	9
Stbd. Deck Aft	10
Cockpit	10
Cockpit, Fwd	10
Aft Deck	10
Bilge under Salon	10
In Shed	10
CONTACTS	11
Contact details	11
Telephones	11
Office hours	11
Address	11

SPECIFICATIONS

Overview

Meticulously-kept, one-owner shoal-draft cruiser with exceptional stability and sea-kindliness offshore. Exquisite workmanship throughout living and storage space below. Easy to singlehand.

Basic Information

Category: Cruising Sailboat

Model Year: 1991

Year Built: 1991

Refit Type: Engine re-build (<200 hrs)

Country: United States

Dimensions

LOA: 54' (16.46mm)

LWL: 42' 2" (12.85mm)

LOD: 53' 3" (16.23mm)

Beam: 15.08

Min Draft: 5' 8" (1.73mm)

Max Draft: 11' 4" (3.45mm)

Speed, Capacities and Weight

Cruise Speed: 7.7 Knots Kts. (9 MPH)

Cruise Speed Range: 1200

Max Speed: 8.5 Knots Kts. (10 MPH)

Water Capacity: 180 Gallons

Fuel Capacity: 236 Gal Gallons

Accommodations

Total Cabins: 3

Sleeps: 8

Total Heads: 3

Hull and Deck Information

Hull Material: Fiberglass

Deck Material: Teak

Hull Configuration: Centerboard

Hull Color: FLAG BLUE

Hull Designer: Ted Hood

Engine Information

Engines: 1

Manufacturer: Westerbeke

Engine Type: Inboard

Fuel Type: Diesel

PHOTOS

Salon, Stbd.



Salon, Fwd.



Salon, Port.



Port Salon Aft to Nav



Nav



Nav Detail



Owner's Cabin, Looking Aft



Owners SR Fwd.



Head



Fwd. Salon to Port Guest Cabin



Port Guest Cabin



Head



Stbd. Guest Cabin



Stbd. Guest Cabin, Looking Fwd.



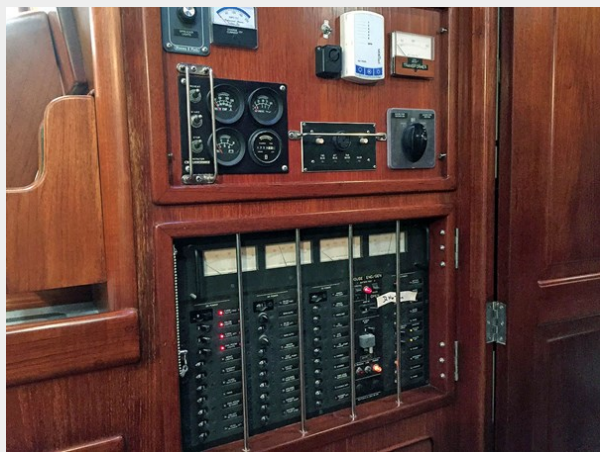
Salon Aft to Galley



Galley, Looking Aft



Electrical Panel



Switch Panel



Foredeck, Fwd.



Coach Roof Aft



Stbd. Deck Aft



Cockpit



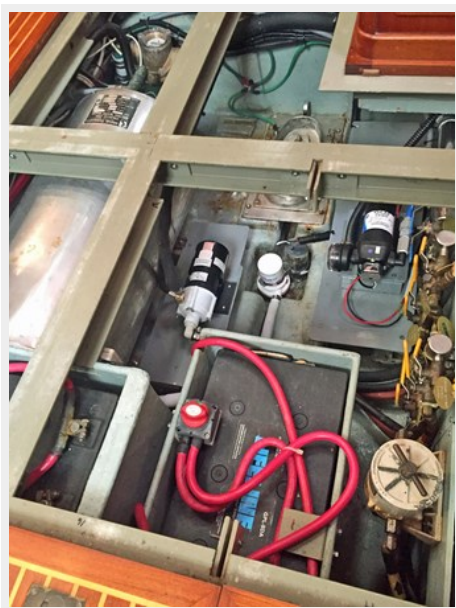
Cockpit, Fwd



Aft Deck



Bilge under Salon



In Shed



CONTACTS

Andrey Shestakov, leading yacht broker of the sales department of Shestakov Yacht Sales Inc. Shestakov Yacht Sales Inc., the official representative of the Miami/Fort Lauderdale FL headquarters.

Contact details

Email: andrey@shestakovyachtsales.com

Web: shestakovyachtsales.com/en/

Telephones

USA: +1(954)274-4435

Office hours

Monday – Saturday: **9:00 - 21:00** EDT

Sunday: **closed**

Address



Harbour Towne Marina, 850 NE 3rd St,
STE 213, Dania, FL 33004