

WINE HER UP — MAXUM



Builder: MAXUM

Year Built: 1998

Model: Motor Yacht

Price: PRICE ON APPLICATION

Location: United States

LOA: 41' (12.5mm)

Beam: 13.83

Max Draft: 3' 9" (1.14mm)

Our experienced yacht broker, Andrey Shestakov, will help you choose and buy a yacht that best suits your needs **Wine Her Up — MAXUM** from our catalogue. Presently, at Shestakov Yacht Sales Inc., we have a wide variety of yachts available on our sale's list. We also work in close contact with all the big yacht manufacturers from all over the world.

If you would like to buy a yacht **Wine Her Up — MAXUM** or would like help answering any questions concerning purchasing, selling or chartering a yacht, please call **+1(954)274-4435**

TABLE OF CONTENTS

| | |
|------------------------------|---|
| TABLE OF CONTENTS | 2 |
| SPECIFICATIONS | 5 |
| Overview | 5 |
| Basic Information | 5 |
| Dimensions | 5 |
| Speed, Capacities and Weight | 5 |
| Accommodations | 6 |
| Hull and Deck Information | 6 |
| Engine Information | 6 |
| PHOTOS | 7 |
| 2 | 7 |
| 3 | 7 |
| 4 | 7 |
| 5 | 7 |
| 6 | 7 |
| 7 | 7 |
| 8 | 8 |
| 9 | 8 |
| 10 | 8 |
| 11 | 8 |
| 12 | 8 |
| 13 | 8 |
| 14 | 9 |
| 15 | 9 |
| 16 | 9 |
| 17 | 9 |
| 18 | 9 |
| 19 | 9 |

| | |
|----|----|
| 20 | 10 |
| 21 | 10 |
| 22 | 10 |
| 23 | 10 |
| 24 | 10 |
| 25 | 10 |
| 26 | 11 |
| 27 | 11 |
| 28 | 11 |
| 29 | 11 |
| 30 | 11 |
| 31 | 11 |
| 32 | 12 |
| 33 | 12 |
| 34 | 12 |
| 35 | 12 |
| 36 | 12 |
| 37 | 12 |
| 38 | 13 |
| 39 | 13 |
| 40 | 13 |
| 41 | 13 |
| 42 | 13 |
| 43 | 13 |
| 44 | 14 |
| 45 | 14 |
| 46 | 14 |
| 47 | 14 |
| 48 | 14 |

| | |
|-----------------|----|
| 49 | 14 |
| CONTACTS | 15 |
| Contact details | 15 |
| Telephones | 15 |
| Office hours | 15 |
| Address | 15 |

SPECIFICATIONS

Overview

The Maxum 4100 SCA Motor Yacht is a classic two-stateroom two-head aft-cabin design with many features not found on smaller boats. Island berths in both staterooms, a stall shower in the VIP, separate head and shower closets in the master, and molded fiberglass steps to the aft deck and bridge to name a few.

This Maxum 4100 is features the optional Cummins 6BT Diesels rated at 330 HPO each with a very low 750 hours! Fresh bottom paint, upgraded AC units and bridge canvas, this boat has a lot to offer!

Please check the FULL SPECS and call to set up an appointment to see her for yourself!

Basic Information

Category: Motor Yacht

Sub Category: Aft Cabin

Model Year: 1998

Year Built: 1998

Country: United States

Dimensions

LOA: 41' (12.5mm)

Beam: 13.83

Max Draft: 3' 9" (1.14mm)

Speed, Capacities and Weight

Water Capacity: 90 Gallons

Holding Tank: 76 Gal Gallons

Fuel Capacity: 300 Gal Gallons

Accommodations

Total Cabins: 2

Total Heads: 2

Hull and Deck Information

Hull Material: Fiberglass

Engine Information

Engines: 2

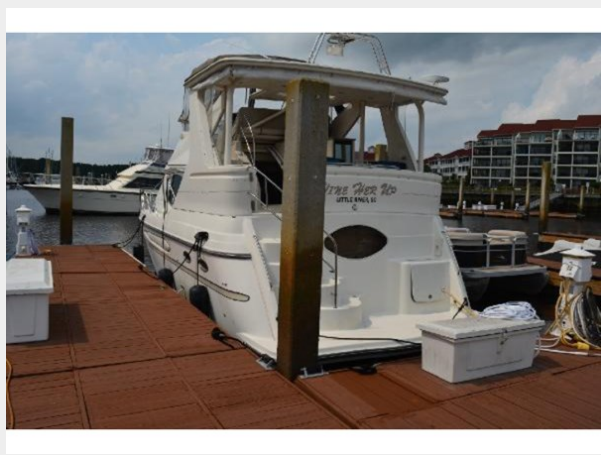
Manufacturer: Cummins

Engine Type: Inboard

Fuel Type: Diesel

PHOTOS

2



3



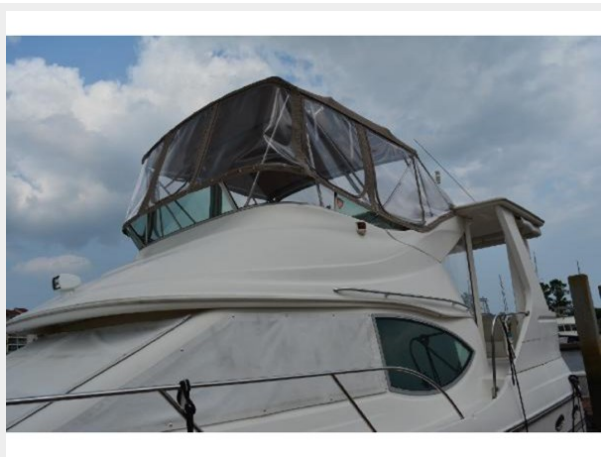
4



5



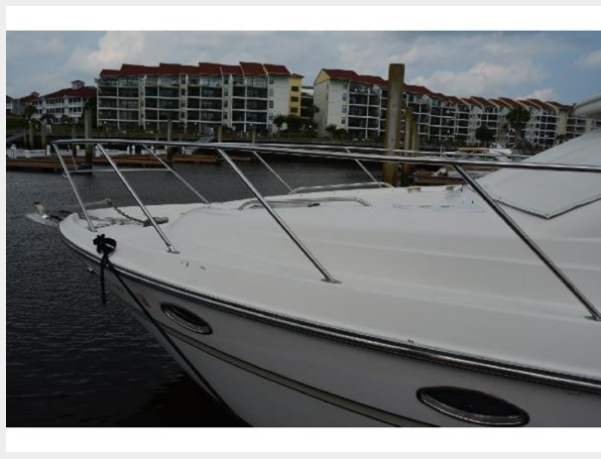
6



7



8



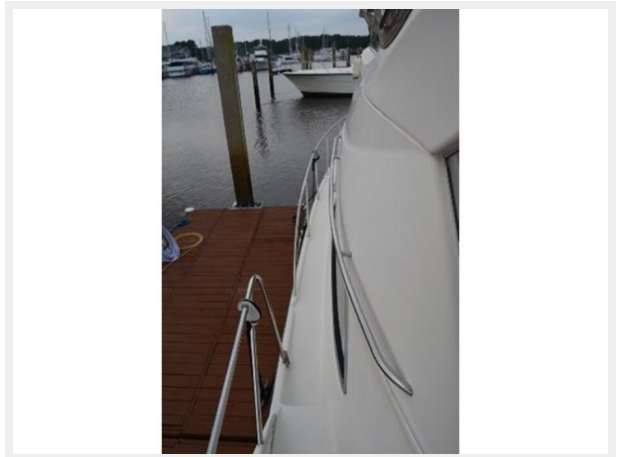
9



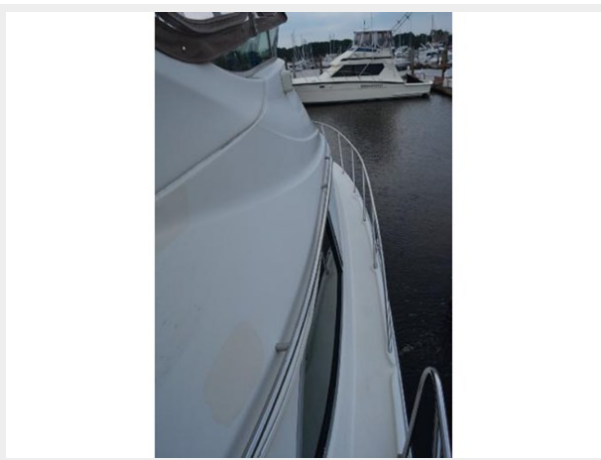
10



11



12



13



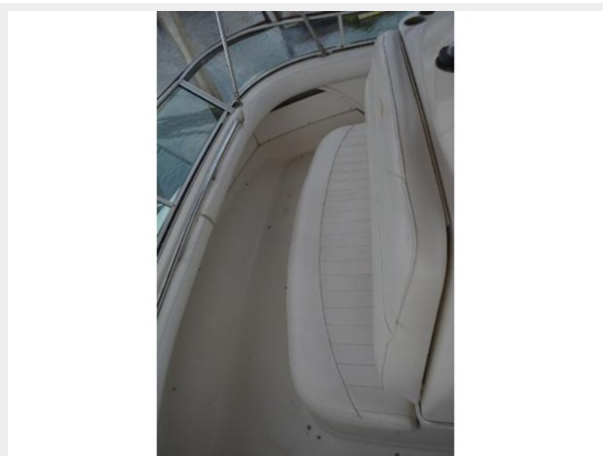
14



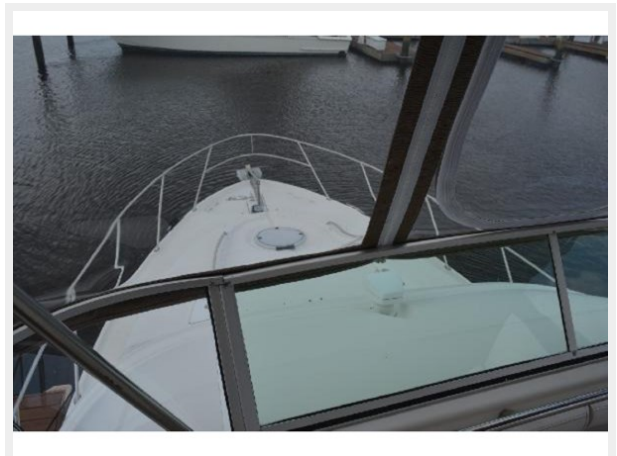
15



16



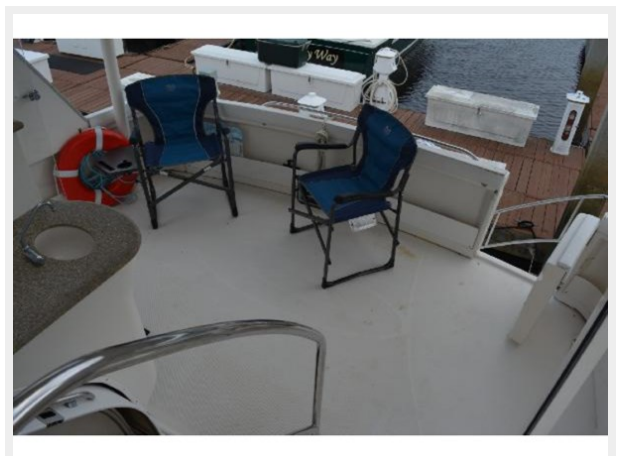
17



18



19



20



21



22



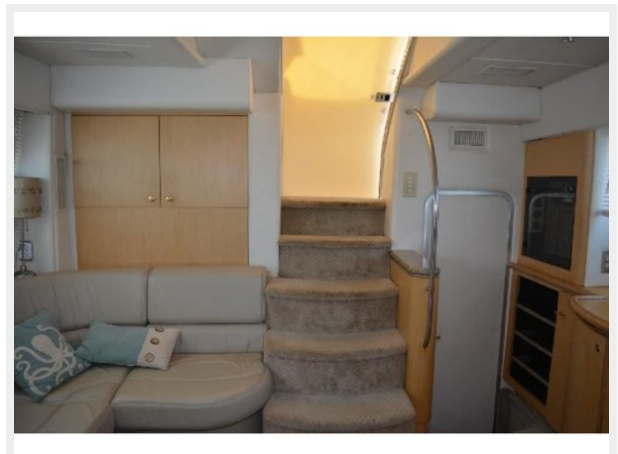
23



24



25



26



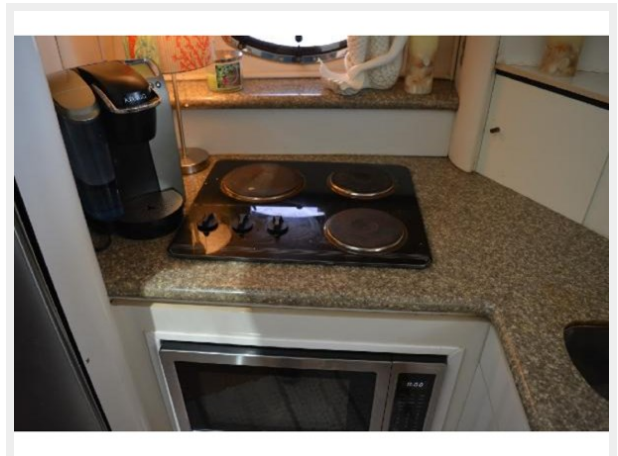
27



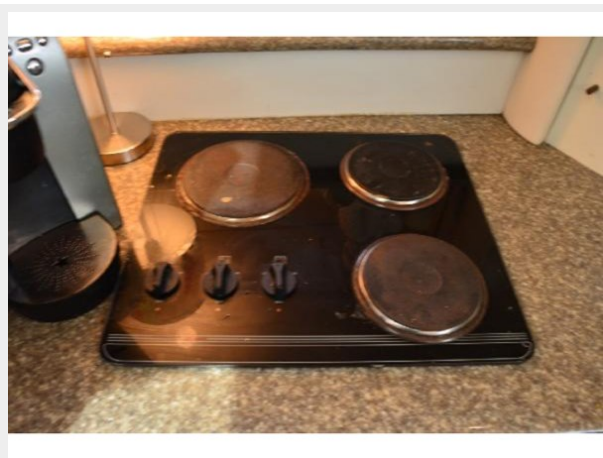
28



29



30



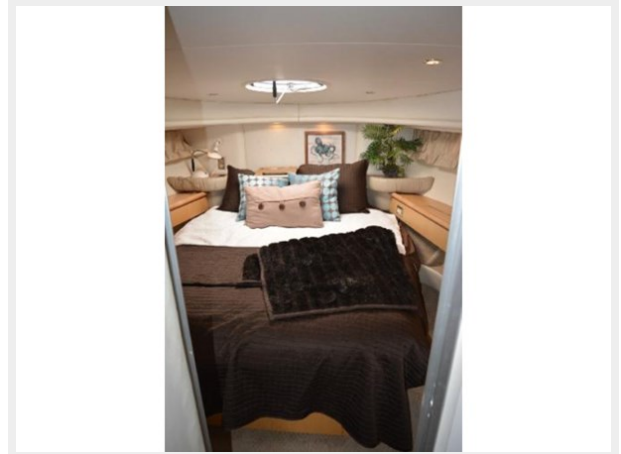
31



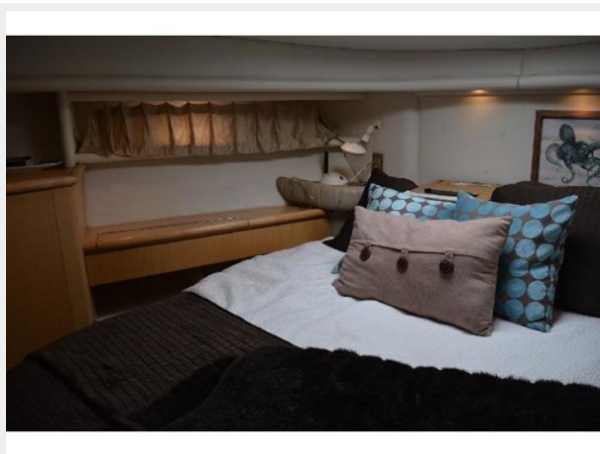
32



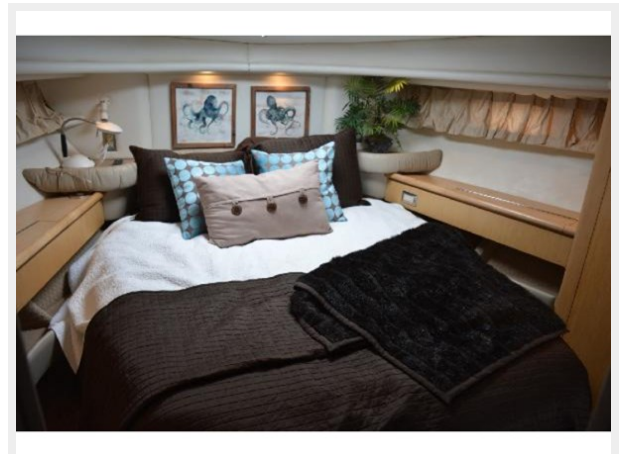
33



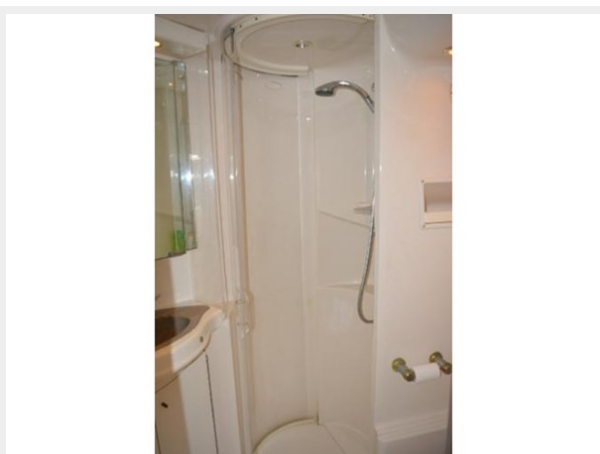
34



35



36



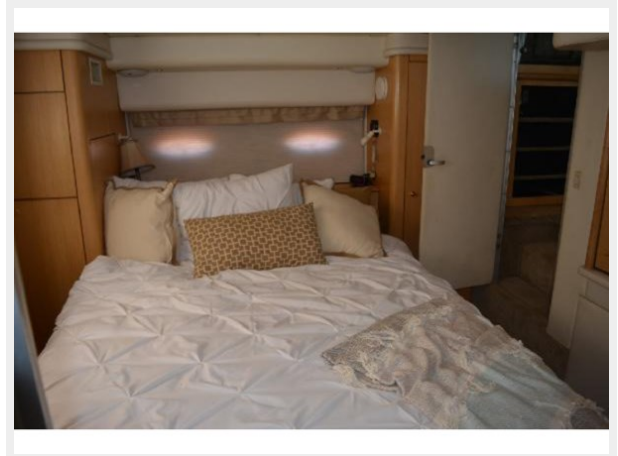
37



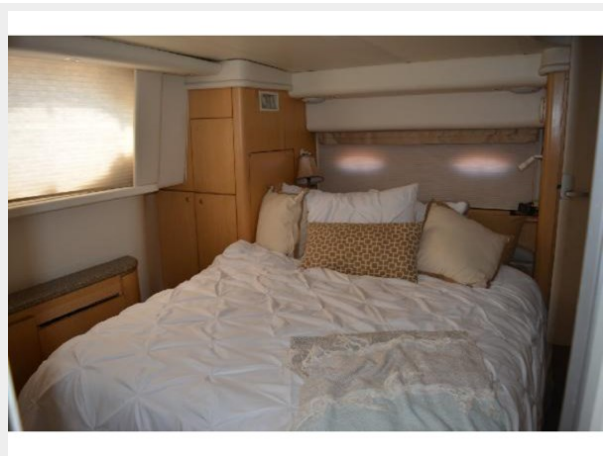
38



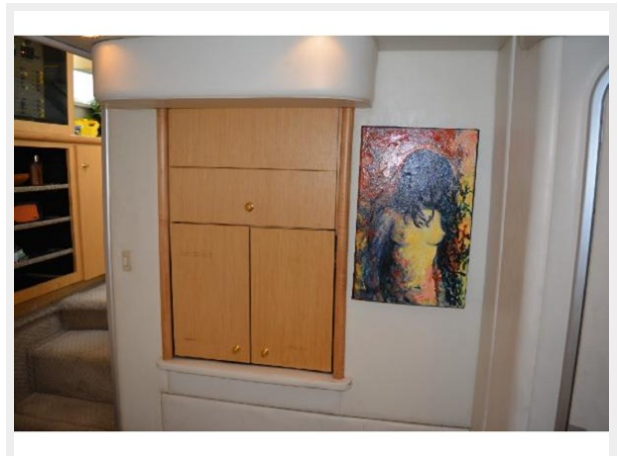
39



40



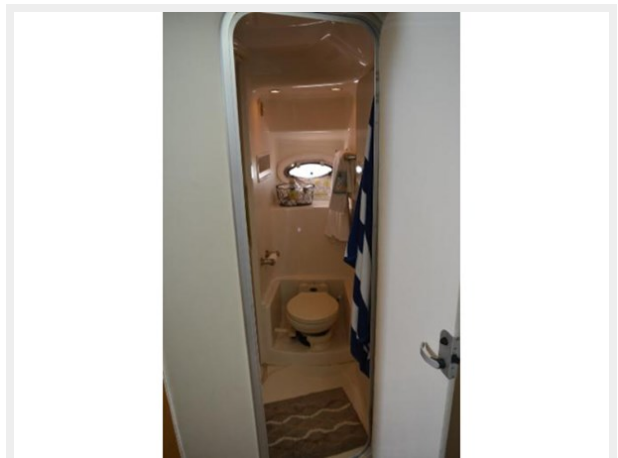
41



42



43



44



45



46



47



48



49



CONTACTS

Andrey Shestakov, leading yacht broker of the sales department of Shestakov Yacht Sales Inc. Shestakov Yacht Sales Inc., the official representative of the Miami/Fort Lauderdale FL headquarters.

Contact details

Email: andrey@shestakovyachtsales.com

Web: shestakovyachtsales.com/en/

Telephones

USA: +1(954)274-4435

Office hours

Monday – Saturday: **9:00 - 21:00** EDT

Sunday: **closed**

Address



Harbour Towne Marina, 850 NE 3rd St,
STE 213, Dania, FL 33004