

# STETSON AMERICANHORSE — SCOUT BOATS



**Builder:** SCOUT BOATS

**Year Built:** 2018

**Model:** Boats

**Price:** PRICE ON APPLICATION

**Location:** United States

**LOA:** 35' (10.67mm)

**Beam:** 10.75

**Min Draft:** 1' 11" (0.58mm)

**Max Draft:** 1' 11" (0.58mm)

**Cruise Speed:** 36.06 Knots Kts. (42 MPH)

Our experienced yacht broker, Andrey Shestakov, will help you choose and buy a yacht that best suits your needs **STETSON AMERICANHORSE — SCOUT BOATS** from our catalogue. Presently, at **Shestakov Yacht Sales Inc.**, we have a wide variety of yachts available on our sale's list. We also work in close contact with all the big yacht manufacturers from all over the world.

If you would like to buy a yacht **STETSON AMERICANHORSE — SCOUT BOATS** or would like help answering any questions concerning purchasing, selling or chartering a yacht, please call **+1(954)274-4435**

---

# TABLE OF CONTENTS

---

TABLE OF CONTENTS	2
SPECIFICATIONS	3
Overview	3
Basic Information	3
Dimensions	3
Speed, Capacities and Weight	3
Accommodations	3
Hull and Deck Information	4
Engine Information	4
PHOTOS	5
CONTACTS	13
Contact details	13
Telephones	13
Office hours	13
Address	13

---

# SPECIFICATIONS

---

## Overview

---

With our Scout Dual Stepped Hull Technology, the 350 LXF can deliver remarkable speeds up to 70 MPH. Just like the fine wine and meal you can prepare and enjoy onboard, either above deck or below, the high performance pairs nicely with the luxurious appointments all around. Bask in the sun, or relax in the shade underneath the electric retractable fiberglass SunShade awning. Available in a triple engine configuration, the 350 LXF offers both endless waypoints and amenities.

## Basic Information

---

**Category:** Boats

**Sub Category:** Center Console

**Model Year:** 2018

**Year Built:** 2018

**Country:** United States

## Dimensions

---

**LOA:** 35' (10.67mm)

**LWL:** 34' 11" (10.64mm)

**Beam:** 10.75

**Min Draft:** 1' 11" (0.58mm)

**Max Draft:** 1' 11" (0.58mm)

## Speed, Capacities and Weight

---

**Cruise Speed:** 36.06 Knots Kts. (42 MPH)

**Water Capacity:** 30 Gallons

**Holding Tank:** 10 Gal Gallons

**Fuel Capacity:** 334 Gal Gallons

## Accommodations

---

**Total Heads:** 1

---

## Hull and Deck Information

---

**Hull Material:** Fiberglass

**Hull Configuration:** Deep Vee

---

## Engine Information

---

**Engines:** 3

**Manufacturer:** Mercury

**Engine Type:** Outboard

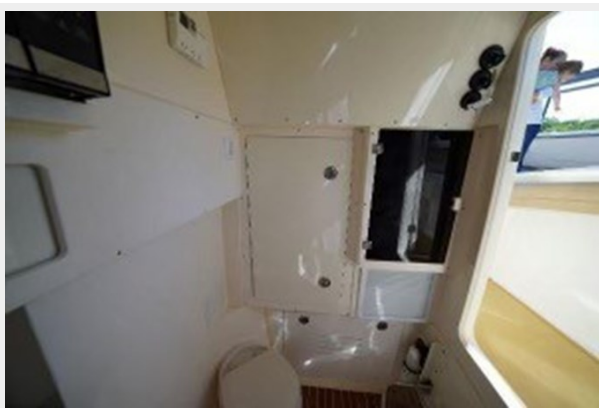
**Fuel Type:** Gas/Petrol

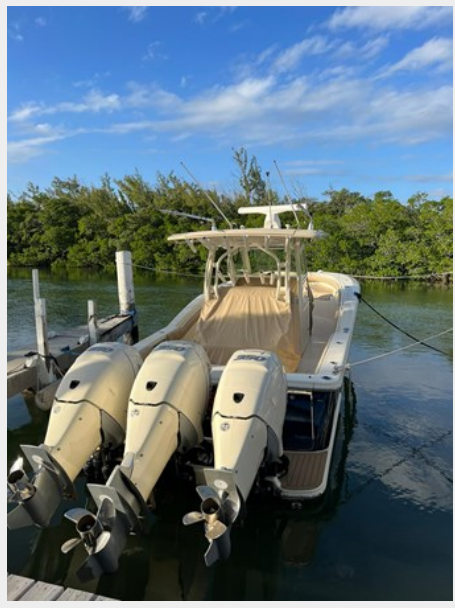
# PHOTOS



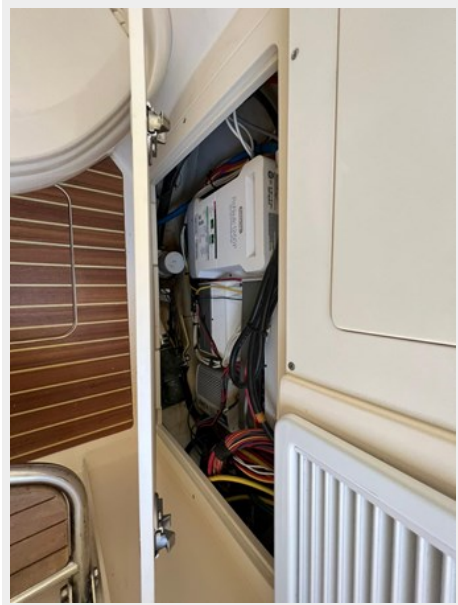






















# CONTACTS

---

Andrey Shestakov, leading yacht broker of the sales department of Shestakov Yacht Sales Inc. Shestakov Yacht Sales Inc., the official representative of the Miami/Fort Lauderdale FL headquarters.

## Contact details

---

Email: **andrey@shestakovyachtsales.com**

Web: [shestakovyachtsales.com/en/](http://shestakovyachtsales.com/en/)

## Telephones

---

USA: **+1(954)274-4435**

## Office hours

---

Monday – Saturday: **9:00 - 21:00** EDT

Sunday: **closed**

## Address

---



Harbour Towne Marina, 850 NE 3rd St, STE 213, Dania, FL 33004