

MORGAN 41 CLASSIC — MORGAN



Builder: MORGAN

Year Built: 1987

Model: Motor Yacht

Price: PRICE ON APPLICATION

Location: United States

LOA: 41' 1" (12.52mm)

Beam: 13.5

Max Draft: 4' 10" (1.47mm)

Our experienced yacht broker, Andrey Shestakov, will help you choose and buy a yacht that best suits your needs **Morgan 41 Classic — MORGAN** from our catalogue. Presently, at **Shestakov Yacht Sales Inc.**, we have a wide variety of yachts available on our sale's list. We also work in close contact with all the big **yacht manufacturers** from all over the world.

If you would like to buy a yacht **Morgan 41 Classic — MORGAN** or would like help answering any questions concerning purchasing, selling or chartering a yacht, please call **+1(954)274-4435**

TABLE OF CONTENTS

TABLE OF CONTENTS	2
SPECIFICATIONS	4
Overview	4
Basic Information	4
Dimensions	4
Speed, Capacities and Weight	4
Accommodations	5
Hull and Deck Information	5
Engine Information	5
PHOTOS	6
DJI_0232	6
731A8145	6
DJI_0235	6
DJI_0238	6
DJI_0236	6
DJI_0233	7
DJI_0234	7
DJI_0240	7
DJI_0237	7
731A8148	7
731A8149	7
731A8151	8
731A8153	8
731A8154	8
731A8156	8
731A8158-Edit	8
731A8166-Edit	8
731A8170-HDR	9

731A8174-Edit	9
731A8178-Edit	9
731A8181-Edit	9
731A8186-Edit	9
731A8189-Edit	9
731A8192-Edit	10
731A8197-Edit	10
CONTACTS	11
Contact details	11
Telephones	11
Office hours	11
Address	11

SPECIFICATIONS

Overview

Not to be confused with the Out Island, this 'Classic' version was refined by Catalina Yachts to improve sailing performance. Maintains the original profile and spacious interior layout but with a 4'11" draft, long fin keel, and skeg hung rudder for better cruising.

Well cared for 41' Morgan by current owner of nearly 30 years.

Excellent condition. Has owned/operated boat since new. Excellent long-distance cruiser and/or live-aboard. Never rented out, have taken meticulous care of all components. Dry Bilge. Major upgrades (over \$72K):- Roller furling in main mast and Genoa.- Custom 4-layer epoxy fiberglass hull bottom- non-blistering & incredibly strong/durable!- New 115VAC air-cooled refrigeration system- Freezer upgrade w/ cold plates- Upgraded port-lights- Custom dinghy davits- New Sta-lok- Bimini upgrade that encloses entire cockpit- All new sails- Garmin Chart-plotter- New main cabin air conditioner & controls

Basic Information

Category: Motor Yacht

Model Year: 1987

Year Built: 1987

Country: United States

Dimensions

LOA: 41' 1" (12.52mm)

Beam: 13.5

Max Draft: 4' 10" (1.47mm)

Speed, Capacities and Weight

Holding Tank: 47 Gal Gallons

Fuel Capacity: 80 Gal Gallons

Accommodations

Total Cabins: 2

Total Heads: 2

Hull and Deck Information

Hull Material: Fiberglass

Engine Information

Engines: 1

Manufacturer: Yanmar

Engine Type: Inboard

Fuel Type: Diesel

PHOTOS

DJI_0232



731A8145



DJI_0235



DJI_0238



DJI_0236



DJI_0233



DJI_0234



DJI_0240



DJI_0237



731A8148



731A8149



731A8151



731A8153



731A8154



731A8156



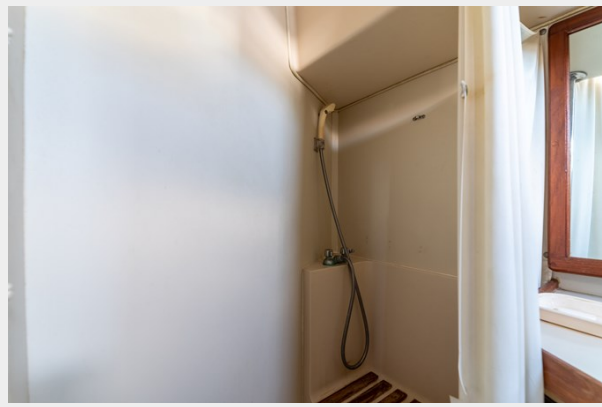
731A8158-Edit



731A8166-Edit



731A8170-HDR



731A8174-Edit



731A8178-Edit



731A8181-Edit



731A8186-Edit



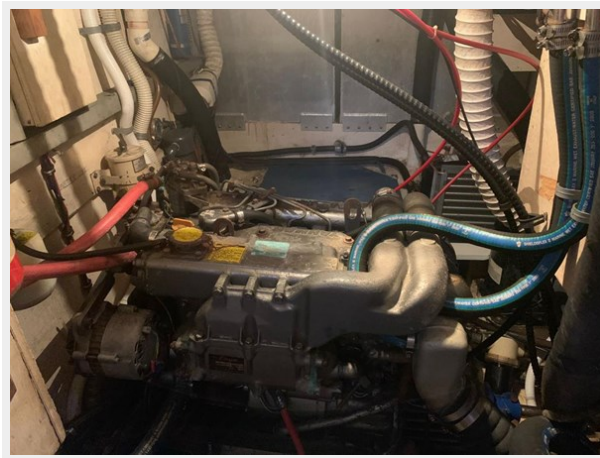
731A8189-Edit



731A8192-Edit



731A8197-Edit



CONTACTS

Andrey Shestakov, leading yacht broker of the sales department of Shestakov Yacht Sales Inc. Shestakov Yacht Sales Inc., the official representative of the Miami/Fort Lauderdale FL headquarters.

Contact details

Email: **andrey@shestakovyachtsales.com**

Web: shestakovyachtsales.com/en/

Telephones

USA: **+1(954)274-4435**

Office hours

Monday – Saturday: **9:00 - 21:00** EDT

Sunday: **closed**

Address



Harbour Towne Marina, 850 NE 3rd St, STE 213, Dania, FL 33004