

MARINE TRADER 34 SUNDECK — MARINE TRADER



Builder: MARINE TRADER

Year Built: 1984

Model: Trawler Yacht

Price: PRICE ON APPLICATION

Location: United States

LOA: 36' (10.97mm)

Beam: 12.16

Max Draft: 3' 6" (1.07mm)

Our experienced yacht broker, Andrey Shestakov, will help you choose and buy a yacht that best suits your needs **Marine Trader 34 Sundeck — MARINE TRADER** from our catalogue. Presently, at Shestakov Yacht Sales Inc., we have a wide variety of yachts available on our sale's list. We also work in close contact with all the big yacht manufacturers from all over the world.

If you would like to buy a yacht **Marine Trader 34 Sundeck — MARINE TRADER** or would like help answering any questions concerning purchasing, selling or chartering a yacht, please call **+1(954)274-4435**

TABLE OF CONTENTS

TABLE OF CONTENTS	2
SPECIFICATIONS	3
Overview	3
Basic Information	3
Dimensions	3
Speed, Capacities and Weight	3
Accommodations	3
Hull and Deck Information	4
Engine Information	4
PHOTOS	5
MT1	13
MT3	13
MT2	13
CONTACTS	14
Contact details	14
Telephones	14
Office hours	14
Address	14

SPECIFICATIONS

Overview

Classic Trawler ready for extended cruising or live aboard today!

****Captain's log & maintenance records on file dating back to '80s****

2200 hours on the Lehman Diesel and mechanically everything runs very well. In the last few months engine & generator service have been completed, teak paneling redone, and new upholstery in salon. In addition, the boat was out of the water recently and got a new shaft seal, cutlass bearing, and rudder repacked.

Contact me to setup your private showing.

Basic Information

Category: Trawler Yacht

Model Year: 1984

Year Built: 1984

Country: United States

Dimensions

LOA: 36' (10.97mm)

Beam: 12.16

Max Draft: 3' 6" (1.07mm)

Speed, Capacities and Weight

Water Capacity: 300 Gallons

Fuel Capacity: 300 Gal Gallons

Accommodations

Total Cabins: 1

Total Heads: 2

Hull and Deck Information

Hull Material: Fiberglass

Engine Information

Engines: 1

Manufacturer: Lehman

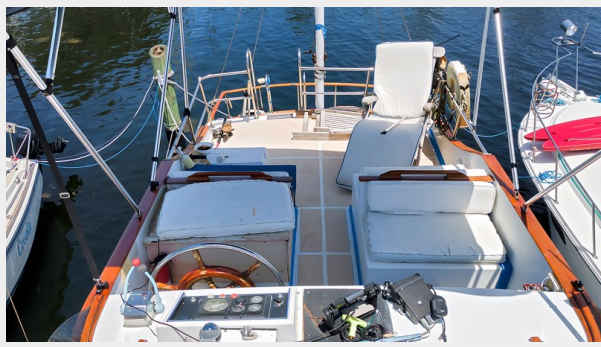
Engine Type: Inboard

Fuel Type: Diesel

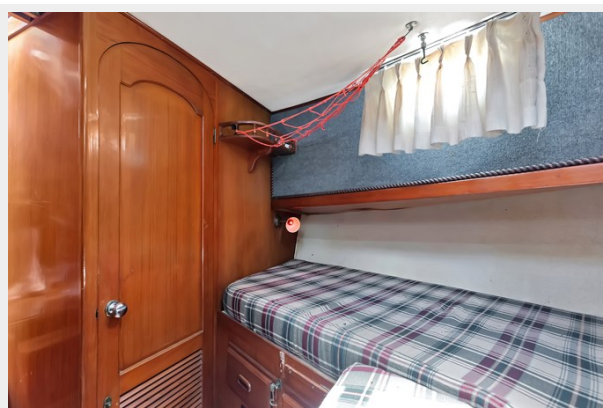
PHOTOS

















MT1



MT2



MT3



CONTACTS

Andrey Shestakov, leading yacht broker of the sales department of Shestakov Yacht Sales Inc. Shestakov Yacht Sales Inc., the official representative of the Miami/Fort Lauderdale FL headquarters.

Contact details

Email: andrey@shestakovyachtsales.com

Web: shestakovyachtsales.com/en/

Telephones

USA: +1(954)274-4435

Office hours

Monday – Saturday: **9:00 - 21:00** EDT

Sunday: **closed**

Address



Harbour Towne Marina, 850 NE 3rd St,
STE 213, Dania, FL 33004